



US010229586B2

(12) **United States Patent**
Kates

(10) **Patent No.:** **US 10,229,586 B2**
(45) **Date of Patent:** ***Mar. 12, 2019**

(54) **RELAYING COMMUNICATIONS IN A WIRELESS SENSOR SYSTEM**

(71) Applicant: **Google LLC**, Mountain View, CA (US)

(72) Inventor: **Lawrence Kates**, Corona Del Mar, CA (US)

(73) Assignee: **Google LLC**, Mountain View, CA (US)

(*) Notice: Subject to any disclaimer, the term of this patent is extended or adjusted under 35 U.S.C. 154(b) by 0 days.

This patent is subject to a terminal disclaimer.

(21) Appl. No.: **15/978,147**

(22) Filed: **May 13, 2018**

(65) **Prior Publication Data**

US 2018/0262986 A1 Sep. 13, 2018

Related U.S. Application Data

(60) Continuation of application No. 15/841,127, filed on Dec. 13, 2017, now Pat. No. 10,015,743, which is a (Continued)

(51) **Int. Cl.**
G08B 25/10 (2006.01)
G08B 1/08 (2006.01)
(Continued)

(52) **U.S. Cl.**
CPC **G08B 25/10** (2013.01); **G06F 1/3209** (2013.01); **G08B 1/08** (2013.01); **G08B 13/04** (2013.01);
(Continued)

(58) **Field of Classification Search**
CPC G08B 1/08; G08B 17/00; G08B 25/009; G08B 25/001; G08B 17/10; G08B 25/10; G06F 1/3209
(Continued)

(56) **References Cited**

U.S. PATENT DOCUMENTS

551,683 A 12/1895 Minor
2,101,637 A 12/1937 Davis
(Continued)

FOREIGN PATENT DOCUMENTS

CN 2388660 7/2000
DE 3415786 11/1984
(Continued)

OTHER PUBLICATIONS

US 9,445,367, 09/2016, Farley et al. (withdrawn)
(Continued)

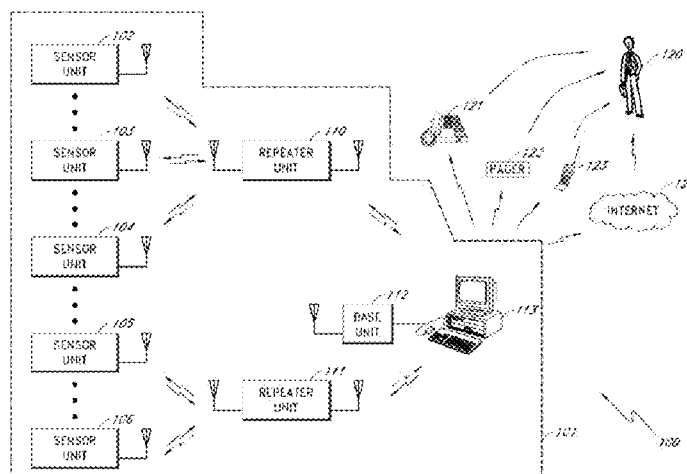
Primary Examiner — Ojiako K Nwugo

(74) *Attorney, Agent, or Firm* — Colby Nipper

(57) **ABSTRACT**

Various embodiments of wireless ambient sensor unit are presented. The sensor unit may include a wireless transceiver configured to transmit sensor data and to receive instructions. The sensor unit may include a sensor configured to measure an ambient condition. The sensor unit may include a controller in communication with the wireless transceiver and the sensor. The controller may be configured to compare data measured about the ambient condition to a stored threshold while the wireless ambient sensor unit is functioning in a low-power mode. The controller may be configured to exit the low-power mode in response to the comparison of the data with the stored threshold. The controller may be configured to cause the data measured about the ambient condition to be transmitted by the wireless transceiver as one or more messages in response to the comparison to the stored threshold.

20 Claims, 7 Drawing Sheets



Related U.S. Application Data

continuation of application No. 15/601,705, filed on May 22, 2017, now Pat. No. 9,872,249, which is a continuation of application No. 15/090,973, filed on Apr. 5, 2016, now Pat. No. 9,723,559, which is a continuation of application No. 14/548,137, filed on Nov. 19, 2014, now Pat. No. 9,318,015, which is a continuation of application No. 14/168,876, filed on Jan. 30, 2014, now Pat. No. 9,357,490, which is a continuation of application No. 12/905,248, filed on Oct. 15, 2010, now abandoned, which is a continuation of application No. 12/182,079, filed on Jul. 29, 2008, now Pat. No. 7,817,031, which is a division of application No. 11/562,313, filed on Nov. 21, 2006, now Pat. No. 7,411,494, which is a continuation of application No. 10/856,231, filed on May 27, 2004, now Pat. No. 7,142,107.

(51) Int. Cl.

G08B 25/00 (2006.01)
G08B 17/10 (2006.01)
G06F 1/3209 (2019.01)
G08B 17/00 (2006.01)
H04Q 9/02 (2006.01)
G08B 21/18 (2006.01)
H04W 52/02 (2009.01)
H04W 84/18 (2009.01)
G08B 21/14 (2006.01)
G08B 13/04 (2006.01)
H04Q 9/00 (2006.01)

(52) U.S. Cl.

CPC **G08B 17/00** (2013.01); **G08B 17/10** (2013.01); **G08B 21/14** (2013.01); **G08B 21/182** (2013.01); **G08B 25/001** (2013.01); **G08B 25/007** (2013.01); **G08B 25/009** (2013.01); **H04Q 9/00** (2013.01); **H04Q 9/02** (2013.01); **H04W 52/0225** (2013.01); **H04W 84/18** (2013.01); **Y02B 70/30** (2013.01); **Y02D 70/00** (2018.01); **Y02D 70/144** (2018.01); **Y02D 70/22** (2018.01); **Y02D 70/26** (2018.01)

(58) Field of Classification Search

USPC 340/573.1, 870.39
 See application file for complete search history.

(56) References Cited**U.S. PATENT DOCUMENTS**

2,233,297 A 2/1941 Polin et al.
 3,805,265 A 4/1974 Lester
 4,056,780 A 11/1977 Faulkner
 4,061,442 A 12/1977 Clark et al.
 4,099,168 A 7/1978 Kedjerski et al.
 4,136,823 A 1/1979 Kullberg
 4,165,024 A 8/1979 Oswalt et al.
 4,226,533 A 10/1980 Snowman
 4,266,220 A 5/1981 Malinsowski
 4,400,694 A 8/1983 Wong et al.
 4,420,746 A 12/1983 Malinowski
 4,437,336 A 3/1984 Abe
 4,455,553 A 6/1984 Johnson
 4,514,720 A 4/1985 Oberstein et al.
 4,535,450 A 8/1985 Tan
 4,543,570 A 9/1985 Bressett et al.
 4,556,873 A 12/1985 Yamada et al.
 4,613,990 A 9/1986 Halpem
 4,652,859 A 3/1987 Van Wienen
 4,661,804 A 4/1987 Abel
 4,670,739 A 6/1987 Kelly

4,675,661 A 6/1987 Ishii
 4,679,742 A 7/1987 Ellis
 4,680,583 A 7/1987 Grover
 4,688,244 A 8/1987 Hannon et al.
 4,692,742 A 9/1987 Raizen et al.
 4,692,750 A 9/1987 Murakami et al.
 4,727,359 A 2/1988 Yuchi et al.
 4,750,197 A 6/1988 Denekamp et al.
 4,772,876 A 9/1988 Laud
 4,801,856 A 1/1989 Wajima
 4,801,865 A 1/1989 Miller et al.
 4,802,240 A 1/1989 Yamaguchi et al.
 4,811,011 A 3/1989 Sollinger
 4,817,131 A 3/1989 Thornborough et al.
 4,817,537 A 4/1989 Cripe et al.
 4,827,244 A 5/1989 Bellavia et al.
 4,857,895 A 8/1989 Kaprelian
 4,862,514 A 8/1989 Kedjerski
 4,871,999 A 10/1989 Ishii et al.
 4,901,316 A 2/1990 Igarashi et al.
 4,916,432 A 4/1990 Tice et al.
 4,918,690 A 4/1990 Markkula, Jr. et al.
 4,939,504 A 7/1990 Miller
 4,951,029 A 8/1990 Severson
 4,964,121 A 10/1990 Moore
 4,977,527 A 12/1990 Shaw et al.
 4,996,518 A 2/1991 Takahashi et al.
 5,040,238 A 8/1991 Comroe et al.
 5,054,052 A 10/1991 Nonami
 5,107,446 A 4/1992 Shaw et al.
 5,117,501 A 5/1992 Childress et al.
 5,129,096 A 7/1992 Burns
 5,134,644 A 7/1992 Garton et al.
 5,138,562 A 8/1992 Shaw et al.
 5,151,683 A 9/1992 Takahashi et al.
 5,159,315 A 10/1992 Takahashi et al.
 5,168,262 A 12/1992 Okayama
 5,188,143 A 2/1993 Krebs
 5,201,061 A 4/1993 Goldberg et al.
 5,210,540 A 5/1993 Masumoto
 5,224,648 A 7/1993 Simon et al.
 5,229,750 A 7/1993 Welch et al.
 5,240,022 A 8/1993 Franklin
 5,260,687 A 11/1993 Yamauchi et al.
 5,265,025 A 11/1993 Hirata
 5,267,180 A 11/1993 Okayama
 5,281,951 A 1/1994 Okayama
 5,295,154 A 3/1994 Meier et al.
 5,315,291 A 5/1994 Furr
 5,319,698 A 6/1994 Glidewell et al.
 5,331,637 A 7/1994 Francis et al.
 5,335,186 A 8/1994 Tarrant
 5,345,224 A 9/1994 Brown
 5,355,518 A 10/1994 Kindinger et al.
 5,357,241 A 10/1994 Welch
 5,369,784 A 11/1994 Nelson
 5,400,246 A 3/1995 Wilson et al.
 5,400,254 A 3/1995 Fujita
 5,408,223 A 4/1995 Guillemot
 5,424,720 A 6/1995 Kirkpatrick
 5,425,051 A 6/1995 Mahany
 5,428,964 A 7/1995 Lobdell
 5,430,433 A 7/1995 Shima
 5,432,500 A 7/1995 Scripps
 5,442,758 A 8/1995 Slingwine et al.
 5,457,680 A 10/1995 Kamm et al.
 5,478,092 A 12/1995 Ishikawa et al.
 5,511,232 A 4/1996 O'Dea et al.
 5,530,433 A 6/1996 Morita
 5,540,092 A 7/1996 Handfield et al.
 5,564,626 A 10/1996 Kettler et al.
 5,565,852 A 10/1996 Petlier et al.
 5,565,858 A 10/1996 Guthrie
 5,568,121 A 10/1996 Lamensdorf
 5,574,435 A 11/1996 Mochizuki
 5,579,306 A 11/1996 Dent
 5,590,409 A 12/1996 Sawahashi et al.
 5,596,652 A 1/1997 Piatek et al.
 5,604,892 A 2/1997 Nuttall et al.

(56)

References Cited

U.S. PATENT DOCUMENTS

5,606,313 A	2/1997	Allen et al.	6,175,310 B1	1/2001	Gott
5,627,515 A	5/1997	Anderson	6,192,400 B1	2/2001	Hanson et al.
5,640,151 A	6/1997	Reis et al.	6,198,913 B1	3/2001	Sung et al.
5,652,751 A	7/1997	Sharony	6,201,974 B1	3/2001	Lietsalmi et al.
5,655,561 A	8/1997	Wendel et al.	6,208,247 B1	3/2001	Agre et al.
5,682,379 A	10/1997	Mahany et al.	6,215,404 B1	4/2001	Morales
5,686,902 A	11/1997	Reis et al.	6,225,894 B1	5/2001	Kyrtsos
5,719,556 A	2/1998	Albin et al.	6,239,690 B1	5/2001	Burbidge et al.
5,723,848 A	3/1998	Bilenko et al.	6,246,882 B1	6/2001	Lachance
5,732,007 A	3/1998	Grushin et al.	6,256,303 B1	7/2001	Drakoulis et al.
5,732,077 A	3/1998	Whitehead	6,281,840 B1	8/2001	Miyoshi et al.
5,736,928 A	4/1998	Tice et al.	6,313,646 B1	11/2001	Davis et al.
5,748,092 A	5/1998	Arsenault et al.	6,313,745 B1	11/2001	Suzuki
5,761,195 A	6/1998	Lu et al.	6,320,501 B1	11/2001	Tice et al.
5,790,946 A	8/1998	Rotzoll	6,354,493 B1	3/2002	Mon
5,793,882 A	8/1998	Piatek et al.	6,360,169 B1	3/2002	Dudaney
5,802,274 A	9/1998	Dorak et al.	6,366,217 B1	4/2002	Cunningham et al.
5,833,910 A	11/1998	Teixido	6,369,714 B2	4/2002	Walter
5,854,994 A	12/1998	Canada et al.	6,377,181 B1	4/2002	Kroll et al.
5,859,536 A	1/1999	Stockton	6,380,860 B1	4/2002	Goetz
5,862,803 A	1/1999	Besson	6,381,467 B1	4/2002	Hill et al.
5,881,951 A	3/1999	Carpenter	6,388,399 B1	5/2002	Eckel et al.
5,889,468 A	3/1999	Banga	6,404,082 B1	6/2002	Rasinski et al.
5,890,054 A	3/1999	Lodgson et al.	6,405,102 B1	6/2002	Swartz et al.
5,892,441 A	4/1999	Woolley et al.	6,409,082 B1	6/2002	Davis et al.
5,892,758 A	4/1999	Argyroudis	6,418,299 B1	7/2002	Ramanathan
5,898,374 A	4/1999	Schepka	6,420,973 B2	7/2002	Acevedo
5,907,491 A	5/1999	Canada et al.	6,421,539 B1	7/2002	Jeong
5,913,180 A	6/1999	Ryan	6,421,731 B1	7/2002	Ciotti et al.
5,914,656 A	6/1999	Ojala et al.	6,424,260 B2	7/2002	Maloney
5,917,423 A	6/1999	Duvall	6,424,264 B1	7/2002	Giraldin et al.
5,917,433 A	6/1999	Keillor et al.	6,427,913 B1	8/2002	Maloney
5,923,102 A	7/1999	Koenig et al.	6,437,692 B1	8/2002	Petite et al.
5,939,982 A	8/1999	Gagnon et al.	6,441,731 B1	8/2002	Hess
5,943,610 A	8/1999	Endo	6,445,292 B1	9/2002	Jen et al.
5,949,332 A	9/1999	Kim	6,452,493 B1	9/2002	Ma et al.
5,950,124 A	9/1999	Trompouwer et al.	6,453,687 B2	9/2002	Sharood et al.
5,959,529 A	9/1999	Kail, IV	6,473,607 B1	10/2002	Shohara et al.
5,959,568 A	9/1999	Woolley	6,476,708 B1	11/2002	Johnson
5,966,079 A	10/1999	Tanguay	6,480,149 B1	11/2002	Twitchell
5,973,603 A	10/1999	Judy	6,481,222 B1	11/2002	Denniston
5,974,236 A	10/1999	Sherman	6,489,895 B1	12/2002	Apelman
5,977,913 A	11/1999	Christ	6,512,478 B1	1/2003	Chien
6,005,669 A	12/1999	Pahk et al.	6,515,283 B1	2/2003	Castleman et al.
6,005,884 A	12/1999	Cook et al.	6,519,509 B1	2/2003	Nierlich et al.
6,006,100 A	12/1999	Koenck et al.	6,526,807 B1	3/2003	Doumit et al.
6,023,476 A	2/2000	Lo	6,529,142 B2	3/2003	Yeh et al.
6,025,788 A	2/2000	Diduck	6,535,110 B1	3/2003	Arora et al.
6,031,455 A	2/2000	Grube et al.	6,542,114 B1	4/2003	Eagleson et al.
6,046,675 A	4/2000	Hanna	6,547,137 B1	4/2003	Begelfer et al.
6,049,273 A	4/2000	Hess	6,552,647 B1	4/2003	Thiesen et al.
6,060,994 A	5/2000	Chen	6,553,336 B1	4/2003	Johnson et al.
6,072,784 A	6/2000	Agrawal et al.	6,559,620 B2	5/2003	Zhou et al.
6,075,451 A	6/2000	Lebowitz et al.	6,583,720 B1	6/2003	Quigley
6,078,050 A	6/2000	Castleman	6,587,755 B1	7/2003	Smith et al.
6,078,269 A	6/2000	Markwell et al.	6,600,418 B2	7/2003	Francis et al.
6,078,785 A	6/2000	Bush	6,601,016 B1	7/2003	Brown
6,078,789 A	6/2000	Bodenmann et al.	6,611,556 B1	8/2003	Koener et al.
6,084,522 A	7/2000	Addy	6,614,349 B1	9/2003	Proctor et al.
6,091,724 A	7/2000	Chandra et al.	6,615,658 B2	9/2003	Snelling
6,097,288 A	8/2000	Koeppe, Jr.	6,617,962 B1	9/2003	Horwitz et al.
6,097,707 A	8/2000	Hodzic et al.	6,619,055 B1	9/2003	Addy
6,104,512 A	8/2000	Batey et al.	6,624,750 B1	9/2003	Marman et al.
6,108,544 A	8/2000	Dorenbosch et al.	6,628,835 B1	9/2003	Brill et al.
6,108,614 A	8/2000	Lincoln et al.	6,639,517 B1	10/2003	Chapman et al.
6,111,511 A	8/2000	Sivathanu et al.	6,665,585 B2	12/2003	Kawase
6,118,988 A	9/2000	Choi	6,666,086 B2	12/2003	Colman et al.
6,124,806 A	9/2000	Cunningham et al.	6,679,400 B1	1/2004	Goodman
6,125,306 A	9/2000	Shimada et al.	6,685,104 B1	2/2004	Float et al.
6,127,928 A	10/2000	Issacman	6,690,657 B1	2/2004	Lau et al.
6,127,976 A	10/2000	Boyd et al.	6,693,907 B1	2/2004	Wesley et al.
6,134,587 A	10/2000	Okanoue	6,700,533 B1	3/2004	Werb et al.
6,134,589 A	10/2000	Hultgren	6,704,681 B1	3/2004	Nassof et al.
6,154,658 A	11/2000	Caci	6,714,977 B1	3/2004	Fowler et al.
6,157,307 A	12/2000	Hardin	6,800,533 B1	3/2004	Werb
			6,717,507 B1	4/2004	Bayley et al.
			6,720,888 B2	4/2004	Eagleson et al.
			6,731,215 B2	5/2004	Harms et al.
			6,735,630 B1	5/2004	Gelvin et al.

(56)

References Cited

U.S. PATENT DOCUMENTS

6,737,974 B2	5/2004	Dickinson	7,209,037 B2	4/2007	Webb
6,744,740 B2	6/2004	Chen	7,209,468 B2	4/2007	Twitchell et al.
6,745,027 B2	6/2004	Twitchell et al.	7,209,771 B2	4/2007	Twitchell et al.
6,747,558 B1	6/2004	Thorne et al.	7,212,122 B2	5/2007	Gloekler
6,747,562 B2	6/2004	Giraldin et al.	7,218,237 B2	5/2007	Kates
6,748,804 B1	6/2004	Lisec et al.	7,221,260 B2	5/2007	Berezowski
6,753,775 B2	6/2004	Auerbach et al.	7,221,668 B2	5/2007	Twitchell et al.
6,759,956 B2	7/2004	Menard et al.	7,228,726 B2	6/2007	Kates
6,760,578 B2	7/2004	Rotzoll	7,230,528 B2	6/2007	Kates
6,761,312 B2	7/2004	Piatek et al.	7,230,933 B2	6/2007	Bahl et al.
6,765,484 B2	7/2004	Eagleson et al.	7,233,958 B2	6/2007	Weng
6,789,220 B1	9/2004	Lovejoy	7,239,238 B2	7/2007	Tester et al.
6,789,739 B2	9/2004	Rosen	7,248,160 B2	7/2007	Mangan et al.
6,796,187 B2	9/2004	Srinivasan et al.	7,253,731 B2	8/2007	Joao
6,798,220 B1	9/2004	Flanigan et al.	7,256,505 B2	8/2007	Arms et al.
6,798,341 B1	9/2004	Eckel et al.	7,270,353 B2	9/2007	Sironi et al.
6,799,210 B1	9/2004	Gentry et al.	7,273,172 B2	9/2007	Olsen
6,803,728 B2	10/2004	Balasubramaniam et al.	7,274,295 B2	9/2007	Koch
6,816,063 B2	11/2004	Kubler et al.	7,277,009 B2	10/2007	Hall
6,825,758 B1	11/2004	Laitsaari	7,282,944 B2	10/2007	Gunn et al.
6,825,777 B2	11/2004	Vock et al.	7,283,052 B2	10/2007	Bohman
6,826,948 B1	12/2004	Bhatti et al.	7,289,761 B2	10/2007	Mazar
6,847,892 B2	1/2005	Zhou	7,299,068 B1	11/2007	Halla
6,851,621 B1	2/2005	Wacker et al.	7,313,421 B2	12/2007	Dejanovic
6,870,476 B2	3/2005	Cockburn et al.	7,315,281 B2	1/2008	Dejanovic
6,874,037 B1	3/2005	Abram et al.	7,317,382 B2	1/2008	Pratt
6,882,274 B2	4/2005	Richardson et al.	7,319,397 B2	1/2008	Chung
6,891,470 B2	5/2005	Bohinc	7,323,981 B2	1/2008	Peel
6,891,838 B1	5/2005	Petite et al.	7,333,015 B2	2/2008	Ekstrom
6,892,751 B2	5/2005	Sanders	7,336,168 B2	2/2008	Kates
6,900,731 B2	5/2005	Kriener	7,339,469 B2	3/2008	Braun
6,909,921 B1	6/2005	Bilger	7,340,260 B2	3/2008	McAlexander
6,919,803 B2	7/2005	Breed	7,342,496 B2	3/2008	Muirhead
6,927,688 B2	8/2005	Tice	7,342,497 B2	3/2008	Chung
6,930,596 B2	8/2005	Kulesz et al.	7,348,875 B2	3/2008	Hughes et al.
6,934,540 B2	8/2005	Twitchell et al.	7,349,803 B2	3/2008	Belenkii et al.
6,935,570 B2	8/2005	Acker	7,349,804 B2	3/2008	Belenkii
6,940,392 B2	9/2005	Chan et al.	7,376,507 B1	5/2008	Daily et al.
6,940,403 B2	9/2005	Kail	7,378,957 B2	5/2008	Twitchell et al.
6,965,314 B2	11/2005	Bohinc	7,378,958 B2	5/2008	Twitchell et al.
6,972,682 B2	12/2005	Lareau et al.	7,378,959 B2	5/2008	Twitchell et al.
6,975,614 B2	12/2005	Kennedy	7,378,960 B1	5/2008	Binding
6,988,079 B1	1/2006	Or-Bach et al.	7,382,251 B2	6/2008	Bohman
6,995,676 B2	2/2006	Amacher	7,391,321 B2	6/2008	Twitchell et al.
7,005,985 B1	2/2006	Steeves	7,394,358 B2	7/2008	Cherry
7,012,529 B2	3/2006	Sajkowsky	7,394,361 B1	7/2008	Twitchell et al.
7,022,773 B2	4/2006	Albano et al.	7,394,372 B2	7/2008	Gloekler
7,026,929 B1	4/2006	Wallace	7,397,363 B2	7/2008	Joao
7,027,773 B1	4/2006	McMillin	7,411,494 B2	8/2008	Kates
7,034,683 B2	4/2006	Ghazarian	7,412,876 B2	8/2008	Kates
7,038,585 B2	5/2006	Hall	7,417,543 B2	8/2008	Bergman
7,042,352 B2	5/2006	Kates	7,419,101 B2	9/2008	Kawai
7,055,759 B2	6/2006	Wacker et al.	7,423,534 B2	9/2008	Dhanjal
7,063,667 B1	6/2006	Ben-Oren et al.	7,423,535 B2	9/2008	Chung
7,072,668 B2	7/2006	Chou	7,430,437 B2	9/2008	Twitchell et al.
7,088,229 B2	8/2006	Johnson	7,434,742 B2	10/2008	Mueller et al.
7,098,784 B2	8/2006	Easley et al.	7,438,334 B2	10/2008	Terry et al.
7,102,504 B2	9/2006	Kates	7,440,781 B2	10/2008	Beach et al.
7,102,505 B2	9/2006	Kates	7,460,690 B2	12/2008	Cohen et al.
7,103,016 B1	9/2006	Duffy et al.	7,469,550 B2	12/2008	Chapman et al.
7,103,344 B2	9/2006	Menard	7,482,920 B2	1/2009	Joao
7,109,879 B2	9/2006	Stults et al.	7,489,244 B2	2/2009	August et al.
7,126,470 B2	10/2006	Clift et al.	7,515,940 B2	4/2009	Chen et al.
7,133,704 B2	11/2006	Twitchell	7,522,568 B2	4/2009	Twitchell et al.
7,135,965 B2	11/2006	Chapman et al.	7,526,381 B2	4/2009	Twitchell
7,142,107 B2	11/2006	Kates	7,528,711 B2	5/2009	Kates
7,142,121 B2	11/2006	Chan et al.	7,528,719 B2	5/2009	Hopman et al.
7,142,123 B1	11/2006	Kates	7,529,547 B2	5/2009	Twitchell
7,148,800 B2	12/2006	Cunningham	7,538,656 B2	5/2009	Twitchell et al.
7,148,803 B2	12/2006	Bandy	7,538,657 B2	5/2009	Twitchell et al.
7,155,238 B2	12/2006	Katz	7,538,658 B2	5/2009	Twitchell et al.
7,155,264 B2	12/2006	Twitchell et al.	7,538,672 B2	5/2009	Lockyer et al.
7,191,934 B2	3/2007	Miller et al.	7,539,520 B2	5/2009	Twitchell et al.
7,196,622 B2	3/2007	Lambright	7,542,849 B2	6/2009	Twitchell et al.
7,200,132 B2	4/2007	Twitchell et al.	7,561,057 B2	7/2009	Kates
			7,563,991 B2	7/2009	Clark et al.
			7,571,865 B2	8/2009	Nicodem et al.
			7,574,168 B2	8/2009	Twitchell et al.
			7,574,300 B2	8/2009	Twitchell et al.

(56)

References Cited

U.S. PATENT DOCUMENTS

7,579,945 B1	8/2009	Richter et al.	2002/0073646 A1	6/2002	Von Gutfield et al.
7,583,198 B2	9/2009	Kates	2002/0075145 A1	6/2002	Hardman et al.
7,583,769 B2	9/2009	Smith et al.	2002/0084414 A1	7/2002	Baker et al.
7,595,727 B2	9/2009	Grijalva et al.	2002/0089434 A1	7/2002	Ghazarian
7,600,137 B2	10/2009	Trappeniers et al.	2002/0098861 A1	7/2002	Doney et al.
7,623,028 B2	11/2009	Kates	2002/0099567 A1	7/2002	Joao
7,626,508 B2	12/2009	Kosuge et al.	2002/0102979 A1	8/2002	Curley et al.
7,703,694 B2	4/2010	Mueller et al.	2002/0119770 A1	8/2002	Twitchell
D614,976 S	5/2010	Skafrdrup et al.	2002/0124169 A1	9/2002	Agrawal et al.
7,735,118 B2	6/2010	Brok et al.	2002/0126005 A1	9/2002	Hardman et al.
7,782,200 B1	8/2010	Fleischmann	2002/0130771 A1	9/2002	Osborne et al.
7,817,031 B2	10/2010	Kates	2002/0130778 A1	9/2002	Nicholson
7,837,958 B2	11/2010	Crapser et al.	2002/0140963 A1	10/2002	Otsuka
7,893,827 B2	2/2011	Kates	2002/0146985 A1	10/2002	Naden
7,904,209 B2	3/2011	Podgorny et al.	2002/0158775 A1	10/2002	Wallace
7,907,941 B2	3/2011	Twitchell	2002/0186141 A1	12/2002	Jen et al.
7,924,735 B2	4/2011	Sun et al.	2003/0005144 A1	1/2003	Engel et al.
7,940,716 B2	5/2011	Twitchell	2003/0008692 A1	1/2003	Phelan
7,975,292 B2	7/2011	Corella	2003/0011428 A1	1/2003	Yamakawa et al.
7,986,238 B2	7/2011	Cho	2003/0011474 A1	1/2003	Ng
7,994,928 B2	8/2011	Richmond	2003/0011482 A1	1/2003	Harms et al.
8,000,315 B2	8/2011	Doi et al.	2003/0025612 A1	2/2003	Holmes et al.
8,016,205 B2	9/2011	Drew	2003/0037125 A1	2/2003	Luman et al.
8,037,022 B2	10/2011	Rahman et al.	2003/0043763 A1	3/2003	Grayson
8,098,166 B2	1/2012	Lang	2003/0051023 A1	3/2003	Reichel et al.
8,111,651 B2	2/2012	Twitchell	2003/0058093 A1	3/2003	Dohi et al.
8,125,978 B2	2/2012	Lim et al.	2003/0083064 A1	5/2003	Cooper
8,165,072 B2	4/2012	Mooney et al.	2003/0114898 A1	6/2003	Von Arx et al.
8,175,109 B2	5/2012	Nogueira-Nine et al.	2003/0117966 A1	6/2003	Chen
8,188,764 B2	5/2012	Weiss et al.	2003/0122677 A1	7/2003	Kail
8,228,183 B2	7/2012	Glenn et al.	2003/0140135 A1	7/2003	Okuyama et al.
8,234,694 B2	7/2012	Youn et al.	2003/0141973 A1	7/2003	Yeh et al.
8,255,090 B2	8/2012	Frader-Thompson et al.	2003/0144020 A1	7/2003	Challa et al.
8,275,404 B2	9/2012	Berger et al.	2003/0146833 A1	8/2003	Johnston et al.
8,391,435 B2	3/2013	Farley et al.	2003/0151513 A1	8/2003	Herrmann et al.
8,462,662 B2	6/2013	Robins et al.	2003/0162504 A1	8/2003	Sabongi et al.
8,514,758 B2	8/2013	De Kimpe et al.	2003/0167391 A1	9/2003	Al-Ali
8,531,268 B2	9/2013	Ghabra et al.	2003/0168443 A1	9/2003	Dozier
8,589,174 B2	11/2013	Nelson et al.	2003/0174056 A1	9/2003	Harshaw
8,605,660 B2	12/2013	Twitchell	2003/0179073 A1	9/2003	Ghazarian
8,619,652 B2	12/2013	Singh et al.	2003/0182077 A1	9/2003	Emord
8,954,082 B2	2/2015	Twitchell	2003/0185289 A1	10/2003	Colmenarez et al.
9,019,110 B2 *	4/2015	Kates G01N 33/0065	2003/0189491 A1	10/2003	Ng
		340/628	2003/0189498 A1	10/2003	Sashihara
9,072,049 B2	6/2015	Farley et al.	2003/0199247 A1	10/2003	Strierner
9,183,733 B2	11/2015	Kates	2003/0202477 A1	10/2003	Zhen et al.
9,286,787 B2	3/2016	Kates	2003/0209601 A1	11/2003	Chung
9,286,788 B2	3/2016	Kates	2003/0214400 A1	11/2003	Mizutani et al.
9,295,099 B2	3/2016	Twitchell et al.	2003/0220075 A1	11/2003	Baker et al.
9,318,015 B2	4/2016	Kates	2003/0228846 A1	12/2003	Berliner et al.
9,357,490 B2	5/2016	Kates	2003/0231001 A1	12/2003	Bruning
9,386,553 B2	7/2016	Berger et al.	2003/0235175 A1	12/2003	Naghian et al.
9,412,260 B2	8/2016	Kates	2003/0236077 A1	12/2003	Sivard
9,474,023 B1	10/2016	Kates	2004/0007264 A1	1/2004	Bootka
9,532,310 B2	12/2016	Farley et al.	2004/0017291 A1	1/2004	Hardman et al.
9,699,736 B2	7/2017	Farley et al.	2004/0019783 A1	1/2004	Hawkes
9,723,559 B2	8/2017	Kates	2004/0021572 A1	2/2004	Schoen et al.
9,860,839 B2	1/2018	Kates	2004/0023629 A1	2/2004	Klank
9,872,249 B2	1/2018	Kates	2004/0025018 A1	2/2004	Haas et al.
9,955,423 B2	4/2018	Kates	2004/0041706 A1	3/2004	Stratmoen et al.
10,015,743 B2	7/2018	Kates	2004/0041731 A1	3/2004	Hisano
2001/0000019 A1	3/2001	Bowers et al.	2004/0050429 A1	3/2004	Aylward
2001/0050550 A1	12/2001	Yoshida et al.	2004/0062224 A1	4/2004	Brownrigg et al.
2002/0005707 A1	1/2002	Kerai et al.	2004/0066271 A1	4/2004	Leck
2002/0011570 A1	1/2002	Castleman	2004/0075566 A1	4/2004	Stepanik et al.
2002/0011923 A1	1/2002	Cunningham et al.	2004/0082296 A1	4/2004	Twitchell
2002/0012323 A1	1/2002	Petite et al.	2004/0090329 A1	5/2004	Hitt
2002/0012337 A1	1/2002	Schmidl et al.	2004/0090924 A1	5/2004	Gaiimo et al.
2002/0030592 A1	3/2002	Hakanen et al.	2004/0100379 A1	5/2004	Boman et al.
2002/0030596 A1	3/2002	Finn et al.	2004/0100394 A1	5/2004	Hitt
2002/0033759 A1	3/2002	Morello	2004/0100415 A1	5/2004	Veitch et al.
2002/0039896 A1	4/2002	Brown	2004/0102864 A1	5/2004	Stack et al.
2002/0050632 A1	5/2002	Tuttle et al.	2004/0113772 A1	6/2004	Chou
2002/0050932 A1	5/2002	Rhoades et al.	2004/0119588 A1	6/2004	Marks
2002/0070846 A1	6/2002	Bastian et al.	2004/0121793 A1	6/2004	Weigele et al.
			2004/0135691 A1	7/2004	Duron et al.
			2004/0137959 A1	7/2004	Salzhauer et al.
			2004/0142716 A1	7/2004	Orlik et al.
			2004/0143750 A1	7/2004	Kulack et al.

(56)	References Cited			2005/0270160 A1	12/2005	Chan et al.	
	U.S. PATENT DOCUMENTS			2005/0275527 A1 *	12/2005	Kates	G08B 1/08 340/539.22
2004/0147267 A1	7/2004	Hill et al.	2005/0275528 A1	12/2005	Kates		
2004/0148632 A1	7/2004	Park et al.	2005/0275529 A1	12/2005	Kates		
2004/0150516 A1	8/2004	Faetanini	2005/0275530 A1	12/2005	Kates		
2004/0164238 A1	8/2004	Xu et al.	2005/0275547 A1	12/2005	Kates		
2004/0164855 A1	8/2004	Okubo	2006/0007008 A1	1/2006	Kates		
2004/0174259 A1	9/2004	Peel	2006/0007863 A1	1/2006	Naghian		
2004/0176028 A1	9/2004	Dibernardo	2006/0032379 A1	2/2006	Kates		
2004/0181496 A1	9/2004	Odinotski et al.	2006/0041680 A1	2/2006	Proctor et al.		
2004/0181693 A1	9/2004	Milliot et al.	2006/0059977 A1	3/2006	Kates		
2004/0183673 A1	9/2004	Nageli	2006/0063484 A1	3/2006	Proctor et al.		
2004/0189485 A1	9/2004	Wang	2006/0068832 A1	3/2006	Islam		
2004/0193876 A1	9/2004	Donley et al.	2006/0098592 A1	5/2006	Proctor et al.		
2004/0198467 A1	10/2004	Orlik et al.	2006/0109106 A1	5/2006	Braun		
2004/0205781 A1	10/2004	Hill et al.	2006/0114102 A1	6/2006	Chang et al.		
2004/0215532 A1	10/2004	Boman et al.	2006/0132485 A1	6/2006	Milinusic		
2004/0217858 A1	11/2004	Ingleby et al.	2006/0135145 A1	6/2006	Redi		
2004/0219930 A1	11/2004	Lin	2006/0146717 A1	7/2006	Conner et al.		
2004/0222884 A1	11/2004	Costa et al.	2006/0147003 A1	7/2006	Archacki et al.		
2004/0224631 A1	11/2004	Davis et al.	2006/0158326 A1	7/2006	Easley et al.		
2004/0232924 A1	11/2004	Hilleary et al.	2006/0163422 A1	7/2006	Krikorian et al.		
2004/0233041 A1	11/2004	Bohman et al.	2006/0164232 A1	7/2006	Waterhouse et al.		
2004/0233054 A1	11/2004	Neff et al.	2006/0164239 A1	7/2006	Loda		
2004/0233855 A1	11/2004	Gutierrez et al.	2006/0164257 A1	7/2006	Giubbini		
2004/0233874 A1	11/2004	Baker	2006/0187026 A1	8/2006	Kochis		
2004/0236645 A1	11/2004	Tien	2006/0202817 A1	9/2006	Mackenzie et al.		
2004/0239268 A1	12/2004	Grubba et al.	2006/0206273 A1	9/2006	Reichel et al.		
2004/0246463 A1	12/2004	Milinusic	2006/0208099 A1	9/2006	Chapman et al.		
2004/0246903 A1	12/2004	Huang et al.	2006/0239197 A1	10/2006	Lieuallen et al.		
2004/0263340 A1	12/2004	Pearson et al.	2006/0255934 A1	11/2006	Easley et al.		
2004/0264372 A1	12/2004	Huang	2006/0256756 A1	11/2006	Wakabayashi		
2005/0012601 A1	1/2005	Matsubara et al.	2006/0267756 A1	11/2006	Kates		
2005/0030175 A1	2/2005	Wolfe	2006/0268727 A1	11/2006	Rangarajan et al.		
2005/0035877 A1	2/2005	Kim	2006/0270382 A1	11/2006	Lappetelainen et al.		
2005/0043068 A1	2/2005	Shohara et al.	2006/0273896 A1	12/2006	Kates		
2005/0043907 A1	2/2005	Eckel et al.	2006/0276161 A1	12/2006	Twitchell et al.		
2005/0046563 A1	3/2005	Whitney	2006/0282546 A1	12/2006	Reynolds et al.		
2005/0053063 A1	3/2005	Madhavan	2006/0286988 A1	12/2006	Blume et al.		
2005/0062605 A1	3/2005	Sutphin	2006/0287008 A1	12/2006	Twitchell et al.		
2005/0071358 A1	3/2005	Hind et al.	2007/0001854 A1	1/2007	Chung et al.		
2005/0073406 A1	4/2005	Easley et al.	2007/0002792 A1	1/2007	Twitchell et al.		
2005/0078672 A1	4/2005	Caliskan et al.	2007/0002793 A1	1/2007	Twitchell et al.		
2005/0087235 A1	4/2005	Skorpik	2007/0004331 A1	1/2007	Twitchell et al.		
2005/0088299 A1	4/2005	Bandy	2007/0008408 A1	1/2007	Zehavi		
2005/0090211 A1	4/2005	Lilja et al.	2007/0032951 A1	2/2007	Tanenhaus et al.		
2005/0093702 A1	5/2005	Twitchell	2007/0038787 A1	2/2007	Harris et al.		
2005/0093703 A1	5/2005	Twitchell	2007/0040673 A1	2/2007	Bohine		
2005/0099292 A1	5/2005	Sajkowsky	2007/0041333 A1	2/2007	Twitchell et al.		
2005/0105841 A1	5/2005	Luo et al.	2007/0041345 A1	2/2007	Yarvis et al.		
2005/0111428 A1	5/2005	Orlik et al.	2007/0043478 A1	2/2007	Ehlers et al.		
2005/0116667 A1	6/2005	Mueller et al.	2007/0043807 A1	2/2007	Twitchell et al.		
2005/0125083 A1	6/2005	Kiko	2007/0044524 A1	3/2007	Coutermarsh et al.		
2005/0128067 A1	6/2005	Zakrewski	2007/0063833 A1	3/2007	Kates		
2005/0128080 A1	6/2005	Hall et al.	2007/0069885 A1	3/2007	Twitchell et al.		
2005/0129034 A1	6/2005	Takeyoshi et al.	2007/0090946 A1	4/2007	Kates		
2005/0131652 A1	6/2005	Corwin et al.	2007/0099628 A1	5/2007	Twitchell et al.		
2005/0145018 A1	7/2005	Sabata et al.	2007/0099629 A1	5/2007	Twitchell et al.		
2005/0146445 A1	7/2005	Sieboda et al.	2007/0113882 A1	5/2007	Meyers		
2005/0152318 A1	7/2005	Elbatt et al.	2007/0114295 A1	5/2007	Jenkins		
2005/0154527 A1	7/2005	Ulrich	2007/0115114 A1	5/2007	Meyers		
2005/0157659 A1	7/2005	Huitema	2007/0115115 A1	5/2007	Meyers		
2005/0164633 A1	7/2005	Linjama et al.	2007/0115827 A1	5/2007	Boehnke et al.		
2005/0174236 A1	8/2005	Brookner	2007/0115859 A1	5/2007	Meyers		
2005/0187867 A1	8/2005	Sokolic et al.	2007/0115902 A1	5/2007	Shamoon et al.		
2005/0190759 A1	9/2005	Lee et al.	2007/0118332 A1	5/2007	Meyers		
2005/0194456 A1	9/2005	Tessier et al.	2007/0121557 A1	5/2007	Sylvain		
2005/0199716 A1	9/2005	Shafer et al.	2007/0133980 A1	6/2007	Meyers		
2005/0200475 A1	9/2005	Chen	2007/0135179 A1	6/2007	Hardman et al.		
2005/0215280 A1	9/2005	Twitchell	2007/0139183 A1	6/2007	Kates		
2005/0226201 A1	10/2005	McMillin	2007/0139197 A1	6/2007	Hopman		
2005/0228991 A1	10/2005	Schmit	2007/0147255 A1	6/2007	Oyman		
2005/0246408 A1	11/2005	Chung	2007/0152815 A1	7/2007	Meyers		
2005/0258974 A1	11/2005	Mahowald	2007/0155327 A1	7/2007	Twitchell et al.		
2005/0261037 A1	11/2005	Raghunath et al.	2007/0159999 A1	7/2007	Twitchell et al.		
2005/0262923 A1	12/2005	Kates	2007/0195702 A1	8/2007	Yuen et al.		
2005/0270151 A1	12/2005	Winick	2007/0200765 A1	8/2007	Meyers		
			2007/0211076 A1	9/2007	Kates		

References Cited

2011/0025501	A1	2/2011	Kates	
2011/0078675	A1	3/2011	Van Camp et al.	
2011/0119747	A1	5/2011	Lambiase	
2011/0138044	A1	6/2011	Bailey et al.	
2011/0151837	A1	6/2011	Wlnbush	
2011/0176465	A1	7/2011	Panta et al.	
2011/0282937	A1	11/2011	Deshpande et al.	
2011/0289320	A1	11/2011	Twitcheall et al.	
2012/0077434	A1	3/2012	Royston et al.	
2012/0163422	A1	6/2012	Lee et al.	
2012/0190390	A1	7/2012	Reunamaki et al.	
2012/0250619	A1	10/2012	Twitcheall	
2013/0016636	A1	1/2013	Berger et al.	
2013/0070657	A1	3/2013	Farley et al.	
2013/0223420	A1	8/2013	Twitcheall et al.	
2014/0203943	A1	7/2014	Kates	
2014/0285336	A1	8/2014	Kates	
2014/0308963	A1	10/2014	Twitcheall et al.	
2014/0333423	A1	11/2014	Kates	
2014/0333434	A1	11/2014	Kates	
2015/0061868	A1	3/2015	Kates	
2015/0061892	A1	3/2015	Kates	
2015/0070192	A1	3/2015	Kates	
2015/0103747	A1	4/2015	Twitcheall	
2015/0172887	A1	6/2015	Petite	
2016/0029315	A1	1/2016	Kates	
2016/0044597	A1	2/2016	Farley et al.	
2016/0219523	A1	7/2016	Twitcheall et al.	
2016/0247382	A1	8/2016	Kates	
2016/0267761	A1	9/2016	Kates	
2016/0286490	A1	9/2016	Kates	
2016/0300183	A1	10/2016	Berger et al.	
2017/0041876	A1	2/2017	Farley et al.	
2017/0048798	A9	2/2017	Twitcheall et al.	
2017/0245215	A1	8/2017	Twitcheall	
2017/0257826	A1*	9/2017	Kates	G08B 1/08
2018/0098283	A1	4/2018	Kates	
2018/0110006	A1	4/2018	Kates	
2018/0115951	A1	4/2018	Kates	
2018/0262985	A1	9/2018	Kates	
2018/0262987	A1	9/2018	Kates	

EP	0070449	1/1983
EP	0093463	11/1983
EP	0346152	12/1989
EP	0346152	A3 10/1990
EP	0467036	1/1992
EP	0601820	6/1994
EP	0748083	12/1996
EP	0748085	12/1996
EP	0580298	1/1997
EP	0829995	3/1998
EP	0930492	7/1999
EP	0441999	8/1999
EP	0944014	9/1999
EP	1692668	8/2006
EP	1317733	4/2010
EP	1692599	7/2013
GB	231458	1/1926
GB	2278471	11/1994
GB	2308947	7/1997
JP	9298780	11/1997
JP	10258189	9/1998
KR	20040012311	2/2004
KR	100509070	8/2005
KR	20050102419	10/2005
KR	100587735	6/2006
KR	20070005515	1/2007
KR	20080001235	1/2008
WO	9810393	3/1998
WO	0021047	4/2000
WO	0055825	9/2000
WO	0068907	11/2000
WO	0069186	11/2000
WO	03009631	1/2003
WO	2003098175	11/2003
WO	2004010398	1/2004

(56)

References Cited

FOREIGN PATENT DOCUMENTS

WO	2004073326	8/2004
WO	2004100763	11/2004
WO	2005010837	2/2005
WO	2006056174	6/2006
WO	2008054938	5/2008
WO	2009140669	11/2009
WO	2009151877	12/2009

OTHER PUBLICATIONS

“Advisory Action”, U.S. Appl. No. 13/555,897, dated Nov. 6, 2014, 3 pages.

“Advisory Action”, U.S. Appl. No. 14/168,876, dated Jun. 10, 2015, 3 pages.

“Advisory Action”, U.S. Appl. No. 14/536,108, dated Sep. 3, 2015, 4 pages.

“Advisory Action”, U.S. Appl. No. 12/353,197, dated Jul. 16, 2012, 5 pages.

“Application Note Published by Texas Instruments for CC1100/CC2500 Products”, Accessed on Dec. 19, 2008, 17 pages.

“Best Way to Contra/Indoor Molds, Dust Mites, and other Micro-organisms: Measuring and Controlling Indoor Humidity [Brochure]”, Indoor Health Products, Inc. (2001-2002). Layton, Utah: Indoor Health Products, Inc. Retrieved from the Internet: <URL: <http://www.relativehumidity-sensor.com>> on Jun. 18, 2004, 3 pages.

“Final Office Action”, U.S. Appl. No. 10/856,395, dated Oct. 30, 2006, 10 pages.

“Final Office Action”, U.S. Appl. No. 14/168,876, dated Mar. 18, 2015, 10 pages.

“Final Office Action”, U.S. Appl. No. 14/534,848, dated Jan. 26, 2017, 10 pages.

“Final Office Action”, U.S. Appl. No. 15/590,880, dated Feb. 8, 2018, 11 pages.

“Final Office Action”, U.S. Appl. No. 14/339,234, dated Aug. 20, 2015, 12 pages.

“Final Office Action”, U.S. Appl. No. 15/161,880, dated Dec. 20, 2016, 12 pages.

“Final Office Action”, U.S. Appl. No. 14/548,137, dated Sep. 1, 2015, 13 pages.

“Final Office Action”, U.S. Appl. No. 14/534,848, dated Nov. 23, 2015, 13 pages.

“Final Office Action”, U.S. Appl. No. 15/052,172, dated Feb. 9, 2017, 13 pages.

“Final Office Action”, U.S. Appl. No. 15/161,880, dated Mar. 20, 2017, 13 pages.

“Final Office Action”, U.S. Appl. No. 11/562,352, dated Aug. 21, 2008, 14 pages.

“Final Office Action”, U.S. Appl. No. 13/555,897, dated Aug. 29, 2014, 14 pages.

“Final Office Action”, U.S. Appl. No. 15/090,973, dated Nov. 10, 2016, 14 pages.

“Final Office Action”, U.S. Appl. No. 12/353,197, dated Mar. 23, 2012, 15 pages.

“Final Office Action”, U.S. Appl. No. 14/536,108, dated Jun. 13, 2016, 16 pages.

“Final Office Action”, U.S. Appl. No. 13/367,341, dated Feb. 26, 2013, 17 pages.

“Final Office Action”, U.S. Appl. No. 14/298,371, dated Mar. 6, 2015, 17 pages.

“Final Office Action”, U.S. Appl. No. 14/536,108, dated May 26, 2015, 18 pages.

“Final Office Action”, U.S. Appl. No. 14/536,108, dated Nov. 29, 2017, 20 pages.

“Final Office Action”, U.S. Appl. No. 14/338,592, dated May 29, 2015, 22 pages.

“Final Office Action”, U.S. Appl. No. 14/573,625, dated Dec. 14, 2016, 29 pages.

“Final Office Action”, U.S. Appl. No. 11/314,807, dated Jul. 16, 2007, 5 pages.

“Final Office Action”, U.S. Appl. No. 11/314,807, dated Apr. 1, 2008, 5 pages.

“Final Office Action”, U.S. Appl. No. 12/036,915, dated Jul. 8, 2009, 5 pages.

“Final Office Action”, U.S. Appl. No. 10/856,395, dated Apr. 13, 2006, 8 pages.

“First Action Interview Office Action”, U.S. Appl. No. 14/338,592, dated Mar. 24, 2015, 4 pages.

“First Action Interview Office Action”, U.S. Appl. No. 14/339,234, dated Mar. 24, 2015, 8 pages.

“First Action Interview Pre-Interview Communication”, U.S. Appl. No. 15/194,148, dated Jul. 17, 2017, 4 pages.

“First Alert—User’s Manual Smoke and Fire Alarm: Battery Powered Photoelectric Smoke Alarm with Silence and Escape Light: Model SA720 [Brochure]”, Mexico: First Alert, Jan. 1, 2007, 6 pages.

“G-Cap 2 Relative Humidity Sensor [Brochure]”, GE General Eastern Instruments—GlobalSpec.com—Retrieved from the Internet: <URL: <http://www.globalspec.com/FeaturedProducts/Detail?ExhibitID=1454>> on Jun. 18, 2004, 2 pages.

“Impedance Moisture Sensor Technology [Brochure]”, Michell Instruments L To. Retrieved from the Internet: <URL: <http://www.sensorland.com/HowPage029.html>> on Jun. 18, 2004, 2 pages.

“International Preliminary Report on Patentability”, Application No. PCT/US2006/026158, dated Jan. 17, 2008, 9 pages.

“International Search Report and Written Opinion”, Application No. PCT/US2009/044277, dated Jan. 27, 2010, 13 pages.

“International Search Report and Written Opinion”, Application No. PCT/US2009/044276, dated Jan. 11, 2010, 7 pages.

“Mechanical Data Sheet: PT(S-PQFP-G48) Plastic Quad Flatpack, [Brochure]”, Texas Instruments, Inc. (1996). Dallas, Texas: Texas Instruments, Inc., Jan. 1, 1996, 2 pages.

“Non-Final Office Action”, U.S. Appl. No. 15/601,705, dated Jun. 16, 2017, 7 pages.

“Non-Final Office Action”, U.S. Appl. No. 12/647,672, 10 pages.

“Non-Final Office Action”, U.S. Appl. No. 11/216,225, dated Mar. 4, 2008, 10 pages.

“Non-Final Office Action”, U.S. Appl. No. 11/428,536, dated Dec. 24, 2009, 10 pages.

“Non-Final Office Action”, U.S. Appl. No. 15/090,973, dated Jun. 15, 2016, 10 pages.

“Non-Final Office Action”, U.S. Appl. No. 15/161,880, dated Jul. 12, 2016, 10 pages.

“Non-Final Office Action”, U.S. Appl. No. 12/353,197, dated Oct. 6, 2011, 11 pages.

“Non-Final Office Action”, U.S. Appl. No. 13/555,897, dated Dec. 17, 2013, 11 pages.

“Non-Final Office Action”, U.S. Appl. No. 14/534,848, dated Jun. 13, 2017, 11 pages.

“Non-Final Office Action”, U.S. Appl. No. 15/590,880, dated Aug. 11, 2017, 12 pages.

“Non-Final Office Action”, U.S. Appl. No. 14/338,592, dated Mar. 2, 2015, 12 pages.

“Non-Final Office Action”, U.S. Appl. No. 14/534,848, dated Aug. 11, 2016, 12 pages.

“Non-Final Office Action”, U.S. Appl. No. 12/271,850, dated May 11, 2011, 13 pages.

“Non-Final Office Action”, U.S. Appl. No. 15/052,172, dated Jul. 19, 2016, 13 pages.

“Non-Final Office Action”, U.S. Appl. No. 10/948,628, dated Sep. 8, 2006, 14 pages.

“Non-Final Office Action”, U.S. Appl. No. 11/761,760, dated Jan. 16, 2008, 15 pages.

“Non-Final Office Action”, U.S. Appl. No. 14/536,108, dated Dec. 3, 2015, 17 pages.

“Non-Final Office Action”, U.S. Appl. No. 14/536,108, dated May 4, 2017, 17 pages.

“Non-Final Office Action”, U.S. Appl. No. 14/536,108, dated Feb. 22, 2018, 18 pages.

“Non-Final Office Action”, U.S. Appl. No. 14/534,848, dated Jun. 1, 2015, 19 pages.

“Non-Final Office Action”, U.S. Appl. No. 13/367,341, dated Jul. 24, 2012, 20 pages.

(56)

References Cited

OTHER PUBLICATIONS

- “Non-Final Office Action”, U.S. Appl. No. 12/905,248, dated Aug. 30, 2013, 20 pages.
- “Non-Final Office Action”, U.S. Appl. No. 14/573,625, dated May 5, 2016, 38 pages.
- “Non-Final Office Action”, U.S. Appl. No. 15/194,148, dated Dec. 7, 2017, 4 pages.
- “Non-Final Office Action”, U.S. Appl. No. 10/856,231, dated Apr. 5, 2006, 4 pages.
- “Non-Final Office Action”, U.S. Appl. No. 11/145,880, dated Apr. 27, 2006, 4 pages.
- “Non-Final Office Action”, U.S. Appl. No. 11/145,880, dated Mar. 1, 2007, 4 pages.
- “Non-Final Office Action”, U.S. Appl. No. 14/573,625, dated Sep. 21, 2017, 5 pages.
- “Non-Final Office Action”, U.S. Appl. No. 11/314,807, dated Jan. 18, 2007, 5 pages.
- “Non-Final Office Action”, U.S. Appl. No. 11/562,313, dated Sep. 5, 2007, 5 pages.
- “Non-Final Office Action”, U.S. Appl. No. 11/562,352, dated Jan. 14, 2008, 5 pages.
- “Non-Final Office Action”, U.S. Appl. No. 11/748,388, dated Dec. 17, 2008, 5 pages.
- “Non-Final Office Action”, U.S. Appl. No. 10/856,395, dated Oct. 3, 2005, 6 pages.
- “Non-Final Office Action”, U.S. Appl. No. 11/216,225, dated Jul. 10, 2008, 6 pages.
- “Non-Final Office Action”, U.S. Appl. No. 12/036,915, dated Oct. 8, 2008, 6 pages.
- “Non-Final Office Action”, U.S. Appl. No. 14/875,488, dated Dec. 18, 2015, 6 pages.
- “Non-Final Office Action”, U.S. Appl. No. 10/856,717, dated Dec. 14, 2005, 7 pages.
- “Non-Final Office Action”, U.S. Appl. No. 10/856,717, dated May 31, 2006, 7 pages.
- “Non-Final Office Action”, U.S. Appl. No. 11/494,988, dated Mar. 5, 2009, 7 pages.
- “Non-Final Office Action”, U.S. Appl. No. 12/182,079, dated Feb. 26, 2010, 7 pages.
- “Non-Final Office Action”, U.S. Appl. No. 10/856,390, dated Dec. 15, 2005, 8 pages.
- “Non-Final Office Action”, U.S. Appl. No. 10/856,231, dated Dec. 21, 2005, 8 pages.
- “Non-Final Office Action”, U.S. Appl. No. 11/231,321, dated Jul. 24, 2006, 8 pages.
- “Non-Final Office Action”, U.S. Appl. No. 12/468,047, dated Dec. 13, 2011, 8 pages.
- “Non-Final Office Action”, U.S. Appl. No. 10/856,387, dated Dec. 14, 2005, 9 pages.
- “Non-Final Office Action”, U.S. Appl. No. 11/233,931, dated Jul. 10, 2006, 9 pages.
- “Non-Final Office Action”, U.S. Appl. No. 14/298,371, dated Sep. 9, 2014, 9 pages.
- “Non-Final Office Action”, U.S. Appl. No. 14/168,876, dated Sep. 15, 2014, 9 pages.
- “Notice of Allowance”, U.S. Appl. No. 14/100,357, dated Sep. 15, 2014, 10 pages.
- “Notice of Allowance”, U.S. Appl. No. 11/748,388, dated May 19, 2009, 12 pages.
- “Notice of Allowance”, U.S. Appl. No. 12/647,672, dated Nov. 1, 2012, 12 pages.
- “Notice of Allowance”, U.S. Appl. No. 14/534,848, dated Jan. 24, 2018, 16 pages.
- “Notice of Allowance”, U.S. Appl. No. 10/948,628, dated May 3, 2007, 2 pages.
- “Notice of Allowance”, U.S. Appl. No. 10/856,231, dated Jun. 28, 2006, 4 pages.
- “Notice of Allowance”, U.S. Appl. No. 11/231,321, dated Mar. 21, 2007, 4 pages.
- “Notice of Allowance”, U.S. Appl. No. 11/145,880, dated Sep. 21, 2007, 4 pages.
- “Notice of Allowance”, U.S. Appl. No. 11/314,807, dated Dec. 24, 2008, 4 pages.
- “Notice of Allowance”, U.S. Appl. No. 15/161,880, dated Sep. 8, 2017, 5 pages.
- “Notice of Allowance”, U.S. Appl. No. 15/601,705, dated Oct. 5, 2017, 5 pages.
- “Notice of Allowance”, U.S. Appl. No. 13/555,897, dated Jun. 8, 2015, 5 pages.
- “Notice of Allowance”, U.S. Appl. No. 14/298,371, dated Jul. 2, 2015, 5 pages.
- “Notice of Allowance”, U.S. Appl. No. 14/548,137, dated Dec. 10, 2015, 5 pages.
- “Notice of Allowance”, U.S. Appl. No. 13/555,897, dated Dec. 17, 2015, 5 pages.
- “Notice of Allowance”, U.S. Appl. No. 14/168,876, dated Feb. 12, 2016, 5 pages.
- “Notice of Allowance”, U.S. Appl. No. 14/875,488, dated Apr. 8, 2016, 5 pages.
- “Notice of Allowance”, U.S. Appl. No. 15/090,973, dated Mar. 16, 2017, 5 pages.
- “Notice of Allowance”, U.S. Appl. No. 10/856,387, dated Jun. 23, 2006, 6 pages.
- “Notice of Allowance”, U.S. Appl. No. 10/856,717, dated Mar. 13, 2007, 6 pages.
- “Notice of Allowance”, U.S. Appl. No. 10/948,628, dated Apr. 9, 2007, 6 pages.
- “Notice of Allowance”, U.S. Appl. No. 11/145,880, dated Jul. 5, 2008, 6 pages.
- “Notice of Allowance”, U.S. Appl. No. 11/562,313, dated May 23, 2008, 6 pages.
- “Notice of Allowance”, U.S. Appl. No. 11/761,760, dated Jul. 1, 2008, 6 pages.
- “Notice of Allowance”, U.S. Appl. No. 11/494,988, dated Jul. 17, 2009, 6 pages.
- “Notice of Allowance”, U.S. Appl. No. 12/182,079, dated Jun. 23, 2010, 6 pages.
- “Notice of Allowance”, U.S. Appl. No. 11/428,536, dated Feb. 8, 2011, 6 pages.
- “Notice of Allowance”, U.S. Appl. No. 10/856,170, dated Dec. 13, 2005, 7 pages.
- “Notice of Allowance”, U.S. Appl. No. 10/856,390, dated Jun. 27, 2006, 7 pages.
- “Notice of Allowance”, U.S. Appl. No. 13/620,171, dated Feb. 18, 2014, 7 pages.
- “Notice of Allowance”, U.S. Appl. No. 14/573,625, dated Mar. 28, 2017, 7 pages.
- “Notice of Allowance”, U.S. Appl. No. 15/841,127, dated Feb. 26, 2018, 8 pages.
- “Notice of Allowance”, U.S. Appl. No. 11/233,931, dated Aug. 10, 2006, 8 pages.
- “Notice of Allowance”, U.S. Appl. No. 11/216,225, dated Mar. 10, 2009, 8 pages.
- “Notice of Allowance”, U.S. Appl. No. 12/271,850, dated Oct. 6, 2011, 8 pages.
- “Notice of Allowance”, U.S. Appl. No. 13/619,681, dated Mar. 3, 2015, 8 pages.
- “Notice of Allowance”, U.S. Appl. No. 14/754,115, dated Dec. 24, 2015, 8 pages.
- “Notice of Allowance”, U.S. Appl. No. 14/754,115, dated May 4, 2016, 8 pages.
- “Notice of Allowance”, U.S. Appl. No. 15/179,350, dated Aug. 15, 2016, 8 pages.
- “Notice of Allowance”, U.S. Appl. No. 14/754,115, dated Sep. 20, 2016, 8 pages.
- “Notice of Allowance”, U.S. Appl. No. 15/248,576, dated Mar. 15, 2017, 8 pages.
- “Notice of Allowance”, U.S. Appl. No. 11/428,536, dated Jul. 23, 2010, 9 pages.
- “Notice of Allowance”, U.S. Appl. No. 12/468,047, dated May 31, 2012, 9 pages.

(56)

References Cited

OTHER PUBLICATIONS

- "Notice of Allowance", U.S. Appl. No. 13/367,341, dated Aug. 5, 2013, 9 pages.
- "Notice of Allowance", U.S. Appl. No. 14/339,234, dated Oct. 27, 2015, 9 pages.
- "Pre-Interview First Office Action", U.S. Appl. No. 14/338,592, dated Oct. 31, 2014, 4 pages.
- "Pre-Interview First Office Action", U.S. Appl. No. 14/339,234, dated Nov. 19, 2014, 5 pages.
- "Pre-Interview First Office Action", U.S. Appl. No. 15/841,092, dated Feb. 9, 2018, 4 pages.
- "Relative Humidity Information [Brochure]", Indoor Health Products, Inc. (2002) Layton, Utah: Indoor Health Products, Inc. Retrieved from the Internet: <URL: <http://www.relativehumidity-sensor.com/relative-humidity.html>> on Jun. 18, 2004, 6 pages.
- "Response to the Department of Homeland Security and Border Protection Conveyance Security Device Requirements, Version 1.2", TeraHop Networks, Inc, Dec. 10, 2007, 62 pages.
- "Restriction Requirement", U.S. Appl. No. 11/562,313, dated Feb. 22, 2008, 5 pages.
- "Restriction Requirement", U.S. Appl. No. 12/468,047, dated Oct. 5, 2011, 5 pages.
- "Restriction Requirement", U.S. Appl. No. 10/948,628, dated Dec. 30, 2005, 6 pages.
- "Restriction Requirement", U.S. Appl. No. 11/761,760, dated Oct. 11, 2007, 6 pages.
- "Restriction Requirement", U.S. Appl. No. 10/948,628, dated Apr. 20, 2006, 7 pages.
- "Restriction Requirement", U.S. Appl. No. 12/193,641, dated Apr. 3, 2009, 7 pages.
- "Supplemental Notice of Allowance", U.S. Appl. No. 11/145,880, dated Dec. 10, 2007, 2 pages.
- "TeraHop Networks—Tradeshaw Handouts", MERIT-2030-2040 Gateway Controllers; MERIT-300 Incident Node; MERIT-TL TeraLink System Software, Jan. 1, 2006, 6 pages.
- "TeraHop Networks Atlanta Airport Fire-Recuse Project Description of Project Components", TeraHop Networks, Feb. 7, 2008, 11 pages.
- "TeraHop Networks—Documents A Through I, Including Brief Description", 121 pages.
- "TRF6901 Single-Chip RF Transceiver Product Catalog [Brochure].", Texas Instruments, Inc. (2001-2003). Dallas, Texas: Texas Instruments, Inc., 27 pages.
- "Waterbug: Electronic water detection at its best! [Brochure].", Winland Electronics, Inc. (2011). Mankato, Minnesota: Winland Electronics Inc. Retrieved from the Internet: <URL: www.winland.com>, Jan. 1, 2011, 1 page.
- "Ways to Prevent Mold Problems [Brochure].", Toxic Black Mold Information Center. (2002). Layton, Utah: Toxic Black Mold Information Center. Retrieved from the Internet: <URL: <http://www.toxic-black-mold-info.com/prevent.html>> on Jun. 18, 2004, 12 pages.
- "Website Page Detailing Features of Texas Instruments' Chipcon Products", Accessed on Dec. 19, 2008, 1 page.
- "Written Opinion", Application No. PCT/US06/00868, dated Apr. 2, 2007, 3 pages.
- "Written Opinion", Application No. PCT/US2006/026158, dated Nov. 21, 2006, 7 pages.
- Bourke, Tony, "Server Load Balancing", Sebastopol, California: O'Reilly Associates, Jan. 1, 2001, 182 pages.
- Easley, Linda et al., "Global Container Security System", U.S. Appl. No. 60/499,338, filed Sep. 3, 2003, 27 pages.
- Garcia-Luna-Aceves, J. J., "Source-Tree Routing in Wireless Networks", Proceedings of Seventh International Conference on Network Protocols, 10 pages.
- Gira, , "Gira Dua/VdS smoke alarm: Double safety by measuring heat and scattered light. [Brochure]", Radevormwald, Germany: Gira. Retrieved from the Internet: <URL: <http://www.gira.de/gebaeudetechnikprodukte/sicherheit/rauchmelder/rauchwarnmelderdualvds.html>> on Apr. 18, 2013., 7 pages.
- Gira, , "Gira Dua/VdS smoke alarm: Double safety by measuring heat and scattered light [Brochure]", Radevormwald, Germany: Gira. Retrieved from the Internet: <URL: <http://www.gira.de/gebaeudetechnikprodukte/sicherheit/rauchmelder/rauchwarnmelderdualvds.html>> on Apr. 18, 2013., 14 pages.
- Gira, , "Installation and user manual: Smoke alarm device Dua/VdS [Brochure]", Radevormwald, Germany: Gira. Retrieved from the Internet: <URL: http://download.gira.de/data2/2330121_O.pdf> on Apr. 18, 2013., 20 pages.
- Gu, Daniel L. et al., "C-ICAMA, A Centralized Intelligent Channel Assigned Multiple Access for Multi-Layer Ad-Hoc Wireless Networks with UAVs", Conference: Wireless Communications and Networking Conference, 2000, pp. 879-884.
- Gu, Daniel L., "Hierarchical Routing for Multi-Layer Ad-Hoc Wireless Networks with UAVs", 21st Century Military Communications Conference Proceedings, 5 pages.
- Haartsen, Jaap, "Bluetooth—The Universal Radio Interface for Ad Hoc, Wireless Connectivity", Ericsson Review No. 3, 8 pages.
- Haartsen, Jaap, "Bluetooth: Vision, Goals, and Architecture", Mobile Computing & Communications Review, vol. 1, No. 2, 8 pages.
- Hubaux, Jean-Pierre et al., "Toward Self-Organized Mobile Ad Hoc Networks: The Terminodes Project", IEEE Communications Magazine (vol. 39, Issue: 1, Jan. 2001), 7 pages.
- Iwata, Atsushi et al., "Scalable Routing Strategies for Ad hoc Wireless Networks", IEEE Journal on Selected Areas in Communications, 26 pages.
- Keshavarzian, , "Energy-Efficient Link Assessment in Wireless Sensor Networks", Conference on the IEEE computer and Communications Societies, vol. 3, 14 pages.
- Kidde, , "Battery Operated Smoke Alarm with Hush: Model i9060 [Brochure].", Mebane, North Carolina: Kidde, Jan. 1, 2009 , 2 pages.
- Lee, Sung-Ju , "On-Demand Multicast Routing Protocol (ODMRP) for Ad Hoc Networks", Retrieved at: <https://tools.ietf.org/html/draft-ietf-manet-odmrp-02>, 29 pages.
- Melodia, Tommaso et al., "On the Interdependence of Distributed Topology Control and Geographical Routing in Ad Hoc and Sensor Networks", IEEE Journal on Selected Areas in Communications, vol. 23, No. 3, pp. 520-532.
- Mingliang, Jiang et al., "Cluster Based Routing Protocol (CBRP)", Internet-Draft, National University of Singapore, 27 pages.
- Morgan, Gary, "Miniature Tags Provide Visibility & Cohesion for an LIA Battalion Level 'Proof of Principle'", Pacific NW National Laboratory, 11 pages.
- Nageli, , "Portable Detachable Self-Contained Tracking Unit for Two-Way Satellite Communication with a Central Server", U.S. Appl. No. 60/444,029, filed Jan. 31, 2003, 38 pages.
- Pei, Guangyu et al., "A Wireless Hierarchical Routing Protocol with Group Mobility", Wireless Communications and Networking Conference, Jan. 21, 1999 , 18 pages.
- Pei, Guangyu et al., "Mobility Management in Hierarchical Multi-Hop Mobile Wireless Networks", Eight International Conference on Computer Communications and Networks Proceedings., 6 pages.
- Perkins, C. E. , "Mobile Ad Hoc Networking Terminology", draft-ietf-manet-term-01.txt—Internet Draft, Nov. 17, 1998 , 10 pages.
- Perkins, Charles E. , "Ad Hoc Networks", Table of Contents, Chapters 1, 4, and 11, 112 pages.
- Ramanathan, Ram et al., "Hierarchically-Organized, Multihop Mobile Wireless Networks for Quality-of-Service Support", Mobile Networks and Applications, 36 pages.
- Sharp, Kevin, "Physical Reality: A Second Look, Supply Chain Systems", http://www.idsystems.com/reader/1999_03/phys0399_pt2/index.htm, 5 pages.
- Sommer, Ben, "Group 4, Passive RF Tags", 4 pages.
- Stojmenovic, Ivan et al., "Design Guidelines for Routing Protocols in Ad Hoc and Sensor Networks with a Realistic Physical Layer", IEEE Communications Magazine (vol. 43, Issue: 3, Mar. 2005), 6 pages.
- Valdevit, Evio, "Cascading in Fibre Channel: how to build a multi-switch fabric", Brocade Communications Systems, available at http://www.brocade.com/SAN/white_papers/pdf/Cascading.pdf, Jan. 1, 1999 , 13 pages.

(56)

References Cited

OTHER PUBLICATIONS

White, et al., "A Conceptual Model for Simulation Load Balancing", , Proc. 1998 Spring Simulation Interoperability Workshop, Jan. 1, 1998, 7 pages.

Woo, Alec et al., "Taming the Underlying Challenges of Reliable Multihop Routing in Sensor Networks", Proceedings of the 1st international conference on Embedded networked sensor systems, SenSys 2003, Nov. 5, 2003, 14 pages.

Pursuant to MPEP § 2001.6(b) the applicant brings the following co-pending application to the Examiner's attention: U.S. Appl. No. 15/978,145.

Pursuant to MPEP § 2001.6(b) the applicant brings the following co-pending application to the Examiner's attention: U.S. Appl. No. 15/978,149.

"Non-Final Office Action", U.S. Appl. No. 15/821,213, dated May 18, 2018, 8 pages.

"Non-Final Office Action", U.S. Appl. No. 15/841,092, dated Jul. 23, 2018, 10 pages.

"Pre-Interview Communication", U.S. Appl. No. 15/978,149, dated Jul. 3, 2018, 4 pages.

"Pre-Interview Office Action", U.S. Appl. No. 15/978,145, dated Jul. 6, 2018, 4 pages.

"Final Office Action", U.S. Appl. No. 14/536,108, dated Aug. 29, 2018, 20 pages.

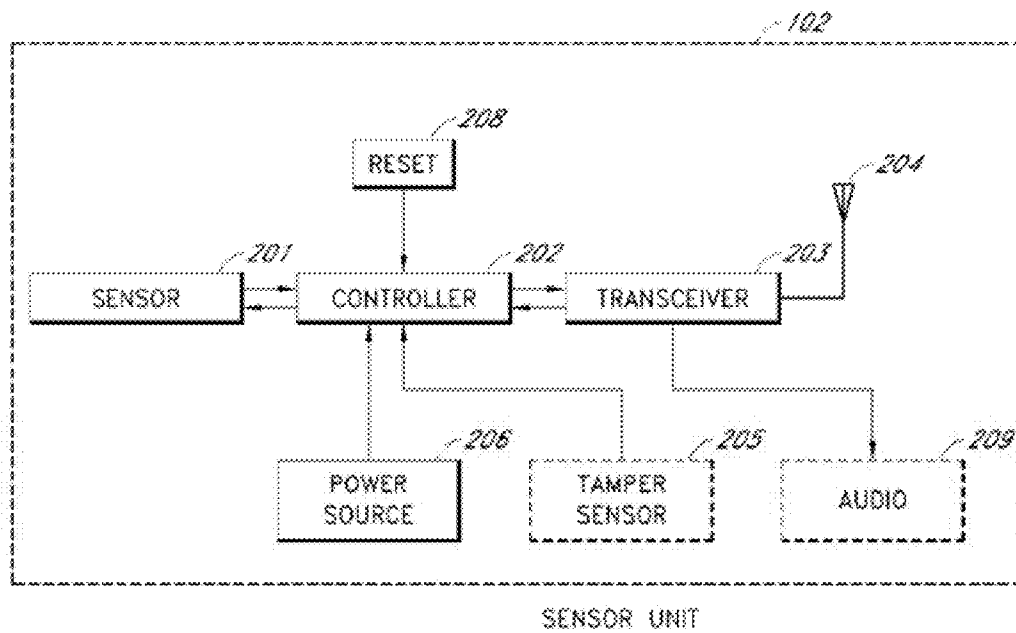
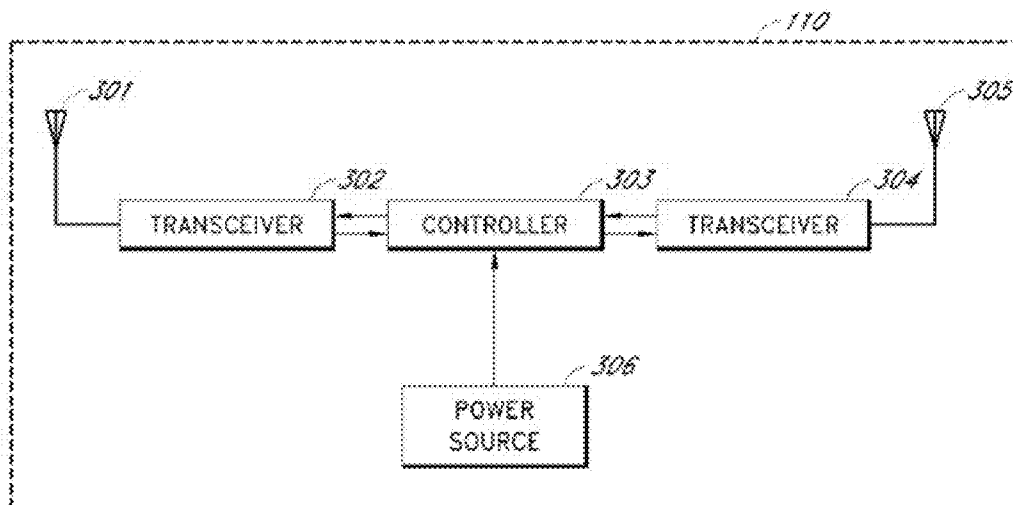
"Non-Final Office Action", U.S. Appl. No. 15/978,145, dated Oct. 24, 2018, 10 pages.

"Non-Final Office Action", U.S. Appl. No. 15/978,149, dated Oct. 30, 2018, 12 pages.

"Non-Final Office Action", U.S. Appl. No. 15/590,880, dated Aug. 28, 2018, 10 pages.

"Final Office Action", U.S. Appl. No. 15/821,213, dated Dec. 27, 2018, 9 pages.

* cited by examiner

*FIG. 2**FIG. 3*

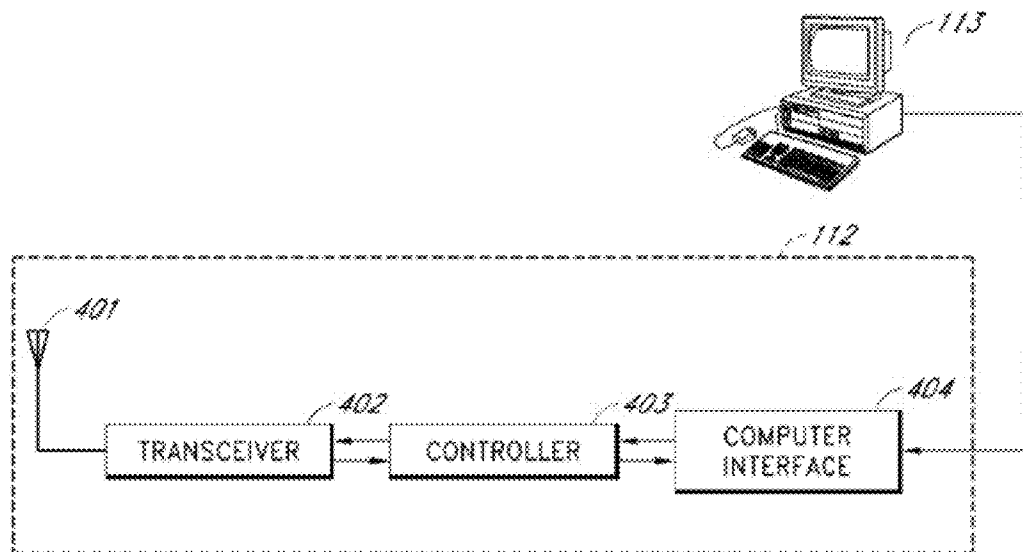


FIG. 4

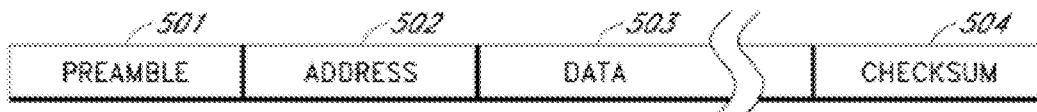


FIG. 5

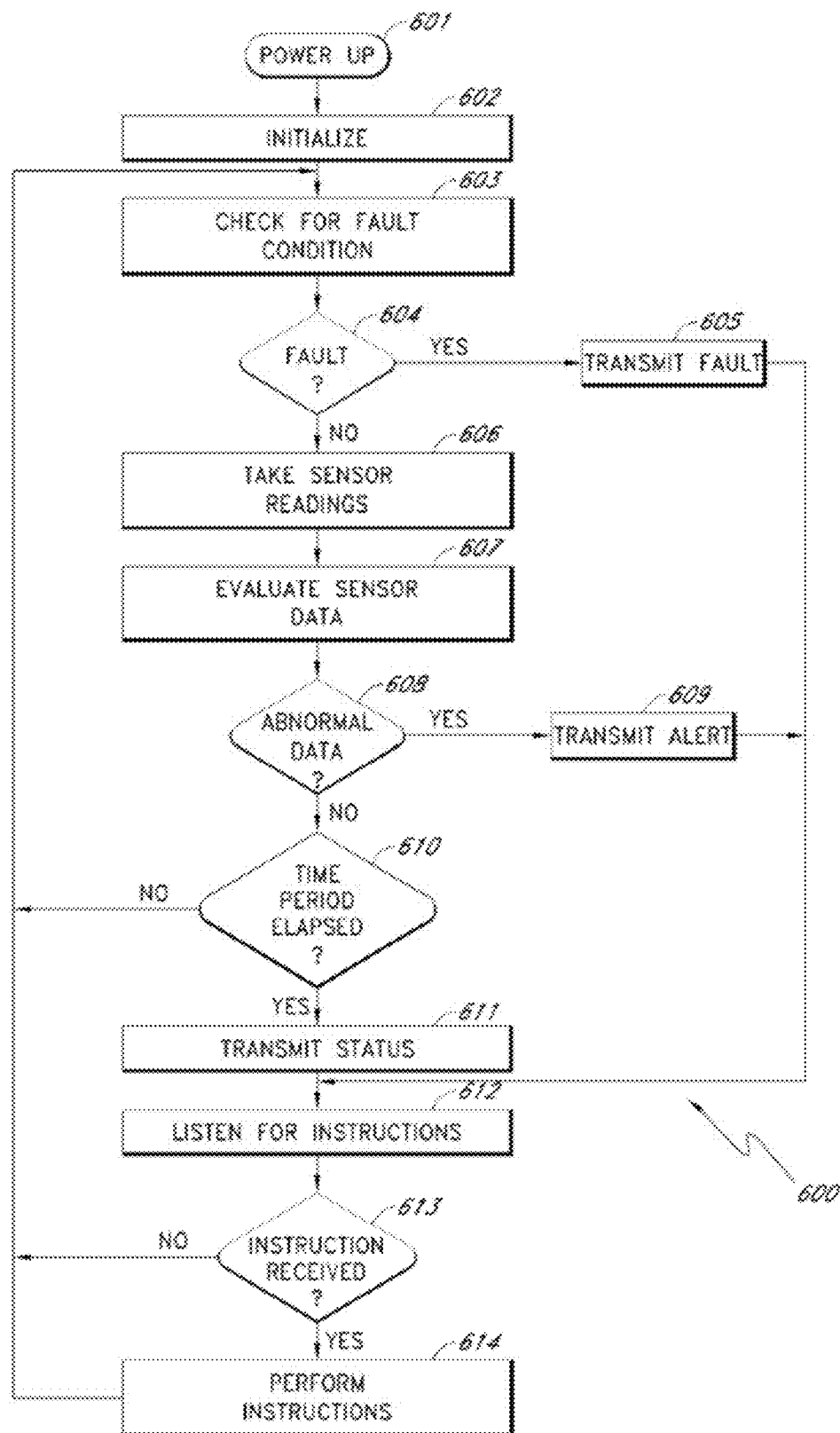


FIG. 6

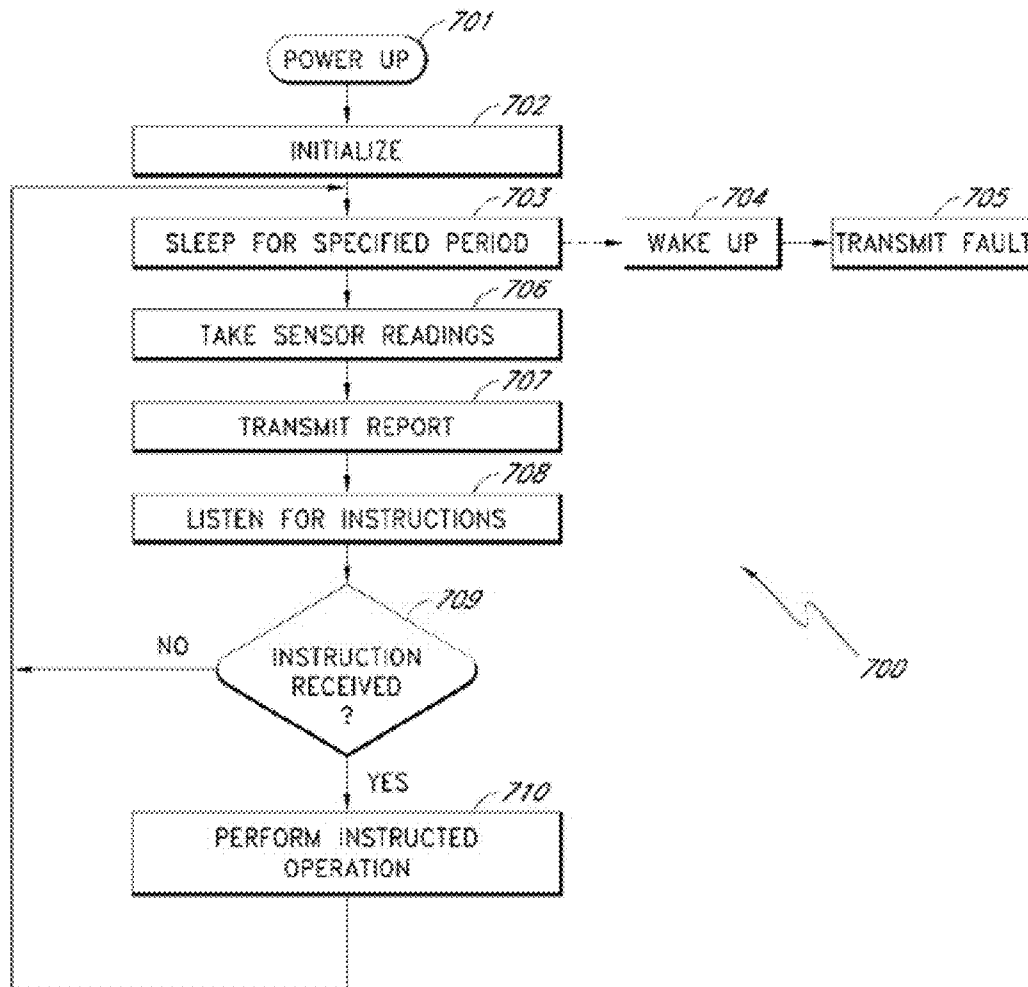


FIG. 7

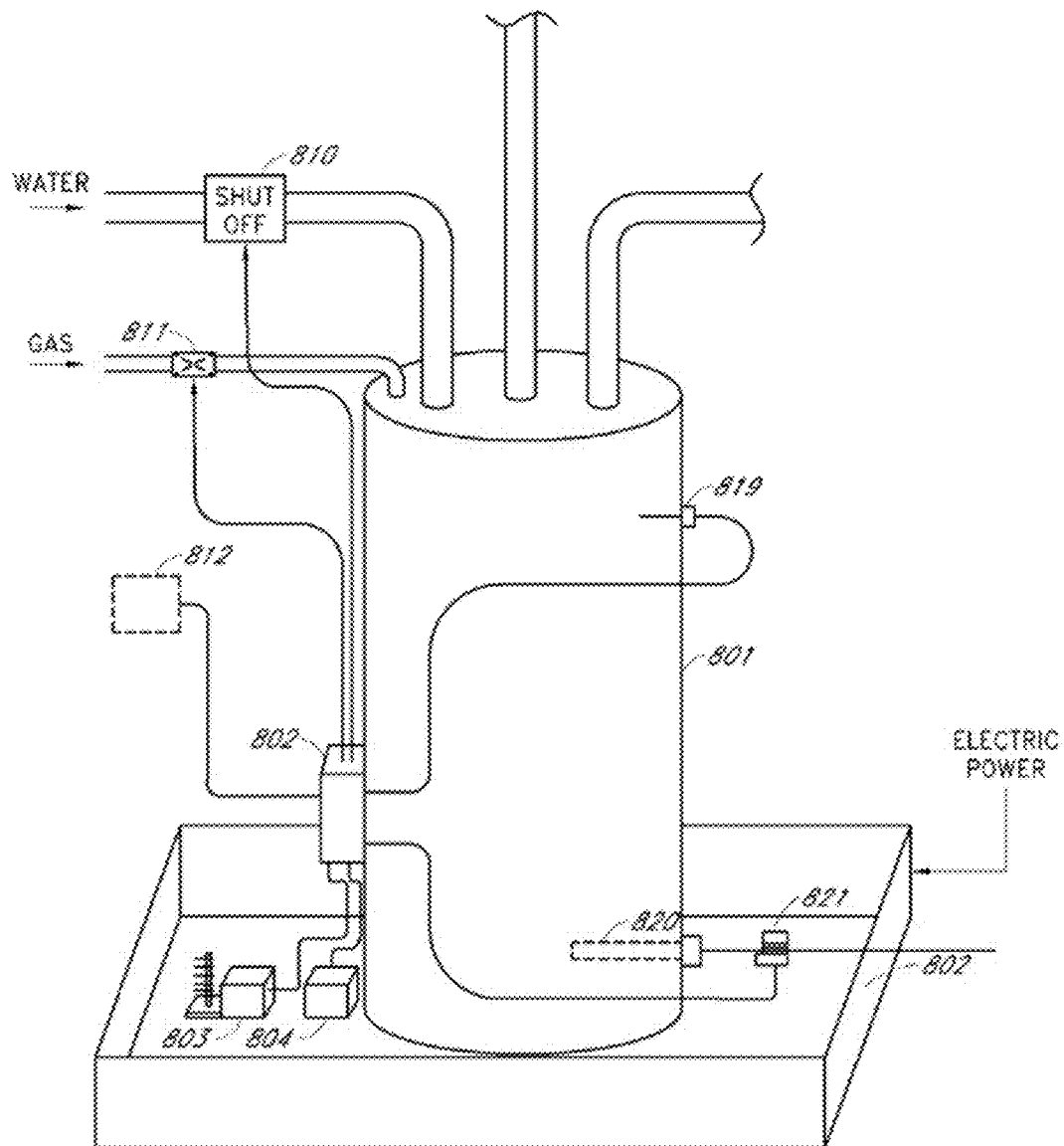
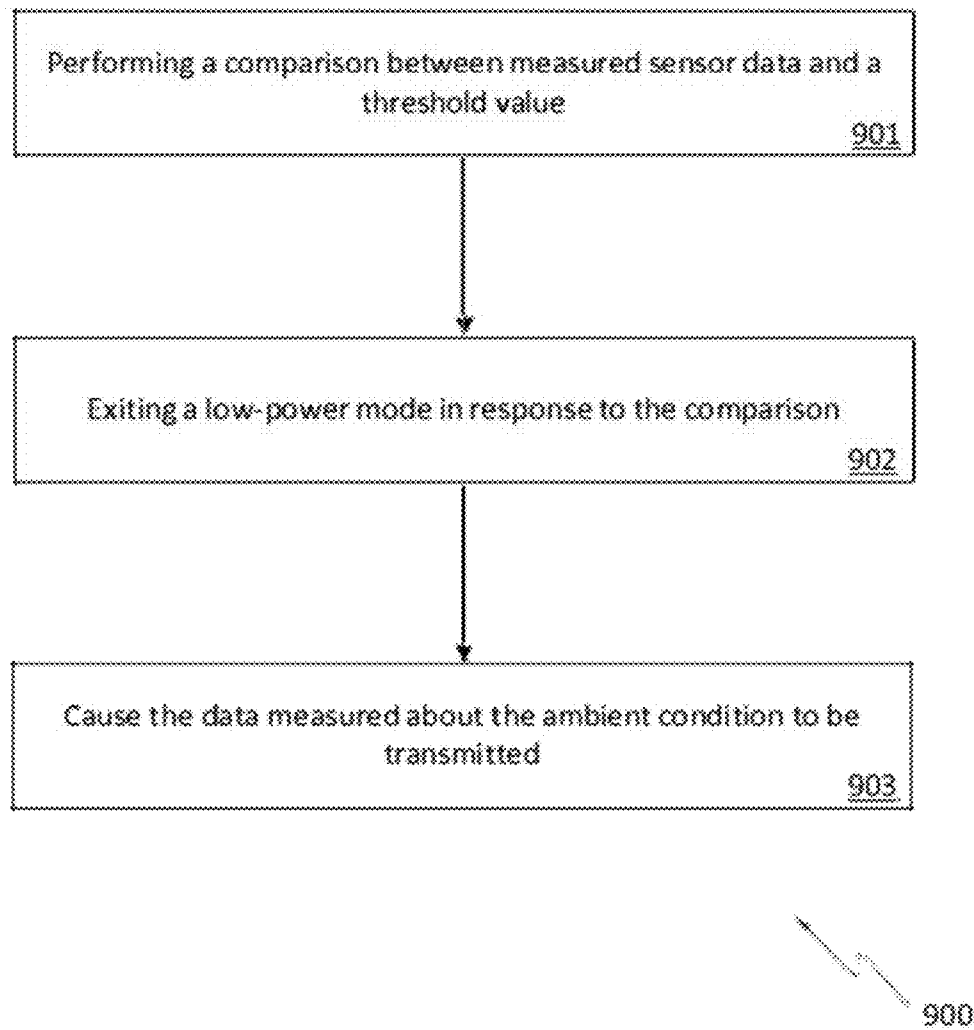


FIG. 8

*FIG. 9*

RELAYING COMMUNICATIONS IN A WIRELESS SENSOR SYSTEM

CROSS-REFERENCE TO RELATED APPLICATIONS

which is a continuation of U.S. patent application Ser. No. 15/601,705, filed May 22, 2017, and entitled, "RELAYING COMMUNICATIONS IN A WIRELESS SENSOR SYSTEM," which is a continuation of U.S. patent application Ser. No. 15/090,973, now U.S. Pat. No. 9,723,559, filed Apr. 5, 2016, and entitled, "WIRELESS SENSOR UNIT COMMUNICATION TRIGGERING AND MANAGEMENT," which is a continuation of U.S. patent application Ser. No. 14/548,137, now U.S. Pat. No. 9,318,015, filed Nov. 19, 2014, and entitled, "WIRELESS SENSOR UNIT COMMUNICATION TRIGGERING AND MANAGEMENT," which is a continuation of U.S. patent application Ser. No. 14/168,876, now U.S. Pat. No. 9,357,490, filed Jan. 30, 2014, and entitled, "WIRELESS TRANSCEIVER," which is a continuation of U.S. patent application Ser. No. 12/905,248, filed Oct. 15, 2010, and entitled, "WIRELESS TRANSCEIVER," which is a continuation of U.S. patent application Ser. No. 12/182,079, now U.S. Pat. No. 7,817,031, filed Jul. 29, 2008, and entitled "WIRELESS TRANSCEIVER," which is a divisional of U.S. patent application Ser. No. 11/562,313, now U.S. Pat. No. 7,411,494, filed Nov. 21, 2006, and entitled "WIRELESS TRANSCEIVER," which is a continuation of U.S. patent application Ser. No. 10/856,231, now U.S. Pat. No. 7,142,107, filed May 27, 2004, and entitled "WIRELESS TRANSCEIVER," the entirety of which are incorporated by reference herein for all purposes.

BACKGROUND

1. Field of the Invention

The present invention relates to a wireless sensor unit system providing bi-directional communication between a sensor (e.g., smoke sensor, fire sensor, temperature sensor, water, etc.) and a repeater or base unit in a building protection system.

2. Description of the Related Art

Maintaining and protecting a building or complex is difficult and costly. Some conditions, such as fires, gas leaks, etc. are a danger to the occupants and the structure. Other malfunctions, such as water leaks in roofs, plumbing, etc. are not necessarily dangerous for the occupants, but can nevertheless cause considerable damage. In many cases, an adverse ambient condition such as water leakage, fire, etc. is not detected in the early stages when the damage and/or danger is relatively small. Sensors can be used to detect such adverse ambient conditions, but sensors present their own set of problems. For example, adding sensors, such as, for example, smoke detectors, water sensors, and the like in an existing structure can be prohibitively expensive due to the cost of installing wiring between the remote sensors and a centralized monitoring device used to monitor the sensors. Adding wiring to provide power to the sensors further increases the cost. Moreover, with regard to fire sensors, most fire departments will not allow automatic notification of the fire department based on the data from a smoke detector alone. Most fire departments require that a specific temperature rate-of-rise be detected before an automatic fire alarm system can notify the fire department. Unfortunately,

detecting fire by temperature rate-of-rise generally means that the fire is not detected until it is too late to prevent major damage.

SUMMARY

The present invention solves these and other problems by providing a relatively low cost, robust, wireless sensor system that provides an extended period of operability without maintenance. The system includes one or more intelligent sensor units and a base unit that can communicate with the sensor units. When one or more of the sensor units detects an anomalous condition (e.g., smoke, fire, water, etc.) the sensor unit communicates with the base unit and provides data regarding the anomalous condition. The base unit can contact a supervisor or other responsible person by a plurality of techniques, such as, telephone, pager, cellular telephone, Internet (and/or local area network), etc. In one embodiment, one or more wireless repeaters are used between the sensor units and the base unit to extend the range of the system and to allow the base unit to communicate with a larger number of sensors.

In one embodiment, the sensor system includes a number of sensor units located throughout a building that sense conditions and report anomalous results back to a central reporting station. The sensor units measure conditions that might indicate a fire, water leak, etc. The sensor units report the measured data to the base unit whenever the sensor unit determines that the measured data is sufficiently anomalous to be reported. The base unit can notify a responsible person such as, for example a building manager, building owner, private security service, etc. In one embodiment, the sensor units do not send an alarm signal to the central location. Rather, the sensors send quantitative measured data (e.g., smoke density, temperature rate of rise, etc.) to the central reporting station.

In one embodiment, the sensor system includes a battery-operated sensor unit that detects a condition, such as, for example, smoke, temperature, humidity, moisture, water, water temperature, carbon monoxide, natural gas, propane gas, other flammable gases, radon, poison gasses, etc. The sensor unit is placed in a building, apartment, office, residence, etc. In order to conserve battery power, the sensor is normally placed in a low-power mode. In one embodiment, while in the low power mode, the sensor unit takes regular sensor readings and evaluates the readings to determine if an anomalous condition exists (e.g., block 901 of method 900 of FIG. 9). If an anomalous condition is detected, then the sensor unit "wakes up" (block 902) and begins communicating with the base unit or with a repeater (block 903). At programmed intervals, the sensor also "wakes up" and sends status information to the base unit (or repeater) and then listens for commands for a period of time.

In one embodiment, the sensor unit is bi-directional and configured to receive instructions from the central reporting station (or repeater). Thus, for example, the central reporting station can instruct the sensor to: perform additional measurements; go to a standby mode; wake up; report battery status; change wake-up interval; run self-diagnostics and report results; etc. In one embodiment, the sensor unit also includes a tamper switch. When tampering with the sensor is detected, the sensor reports such tampering to the base unit. In one embodiment, the sensor reports its general health and status to the central reporting station on a regular basis (e.g., results of self-diagnostics, battery health, etc.).

In one embodiment, the sensor unit provides two wake-up modes, a first wake-up mode for taking measurements (and

3

reporting such measurements if deemed necessary), and a second wake-up mode for listening for commands from the central reporting station. The two wake-up modes, or combinations thereof, can occur at different intervals.

In one embodiment, the sensor units use spread-spectrum techniques to communicate with the base unit and/or the repeater units. In one embodiment, the sensor units use frequency-hopping spread-spectrum. In one embodiment, each sensor unit has an Identification code (ID) and the sensor unit attaches its ID to outgoing communication packets. In one embodiment, when receiving wireless data, each sensor unit ignores data that is addressed to other sensor units.

The repeater unit is configured to relay communications traffic between a number of sensor units and the base unit. The repeater units typically operate in an environment with several other repeater units and thus each repeater unit contains a database (e.g., a lookup table) of sensor IDs. During normal operation, the repeater only communicates with designated wireless sensor units whose IDs appears in the repeater's database. In one embodiment, the repeater is battery-operated and conserves power by maintaining an internal schedule of when its designated sensors are expected to transmit and going to a low-power mode when none of its designated sensor units is scheduled to transmit. In one embodiment, the repeater uses spread-spectrum to communicate with the base unit and the sensor units. In one embodiment, the repeater uses frequency-hopping spread-spectrum to communicate with the base unit and the sensor units. In one embodiment, each repeater unit has an ID and the repeater unit attaches its ID to outgoing communication packets that originate in the repeater unit. In one embodiment, each repeater unit ignores data that is addressed to other repeater units or to sensor units not serviced by the repeater.

In one embodiment, the repeater is configured to provide bi-directional communication between one or more sensors and a base unit. In one embodiment, the repeater is configured to receive instructions from the central reporting station (or repeater). Thus, for example, the central reporting station can instruct the repeater to: send commands to one or more sensors; go to standby mode; "wake up"; report battery status; change wake-up interval; run self-diagnostics and report results; etc.

The base unit is configured to receive measured sensor data from a number of sensor units. In one embodiment, the sensor information is relayed through the repeater units. The base unit also sends commands to the repeater units and/or sensor units. In one embodiment, the base unit includes a diskless PC that runs off of a CD-ROM, flash memory, DVD, or other read-only device, etc. When the base unit receives data from a wireless sensor indicating that there may be an emergency condition (e.g., a fire or excess smoke, temperature, water, flammable gas, etc.) the base unit will attempt to notify a responsible party (e.g., a building manager) by several communication channels (e.g., telephone, Internet, pager, cell phone, etc.). In one embodiment, the base unit sends instructions to place the wireless sensor in an alert mode (inhibiting the wireless sensor's low-power mode). In one embodiment, the base unit sends instructions to activate one or more additional sensors near the first sensor.

In one embodiment, the base unit maintains a database of the health, battery status, signal strength, and current operating status of all of the sensor units and repeater units in the wireless sensor system. In one embodiment, the base unit automatically performs routine maintenance by sending

4

commands to each sensor to run a self-diagnostic and report the results. The bases unit collects such diagnostic results. In one embodiment, the base unit sends instructions to each sensor telling the sensor how long to wait between "wake-up" intervals. In one embodiment, the base unit schedules different wakeup intervals to different sensors based on the sensor's health, battery health, location, etc. In one embodiment, the base unit sends instructions to repeaters to route sensor information around a failed repeater.

BRIEF DESCRIPTION OF THE DRAWINGS

FIG. 1 shows a sensor system that includes a plurality of sensor units that communicate with a base unit through a number of repeater units.

FIG. 2 is a block diagram of a sensor unit.

FIG. 3 is a block diagram of a repeater unit.

FIG. 4 is a block diagram of the base unit.

FIG. 5 shows one embodiment a network communication packet used by the sensor units, repeater units, and the base unit.

FIG. 6 is a flowchart showing operation of a sensor unit that provides relatively continuous monitoring.

FIG. 7 is a flowchart showing operation of a sensor unit that provides periodic monitoring.

FIG. 8 shows how the sensor system can be used to detected water leaks.

FIG. 9 illustrates a method for using a wireless ambient sensor unit.

DETAILED DESCRIPTION

FIG. 1 shows an sensor system **100** that includes a plurality of sensor units **102-106** that communicate with a base unit **112** through a number of repeater units **110-111**. The sensor units **102-106** are located throughout a building **101**. Sensor units **102-104** communicate with the repeater **110**. Sensor units **105-106** communicate with the repeater **111**. The repeaters **110-111** communicate with the base unit **112**. The base unit **112** communicates with a monitoring computer system **113** through a computer network connection such as, for example, Ethernet, wireless Ethernet, firewire port, Universal Serial Bus (USB) port, bluetooth, etc. The computer system **113** contacts a building manager, maintenance service, alarm service, or other responsible personnel **120** using one or more of several communication systems such as, for example, telephone **121**, pager **122**, cellular telephone **123** (e.g., direct contact, voicemail, text, etc.), and/or through the Internet and/or local area network **124** (e.g., through email, instant messaging, network communications, etc.). In one embodiment, multiple base units **112** are provided to the monitoring computer **113**. In one embodiment, the monitoring computer **113** is provided to more than one compute monitor, thus allowing more data to be displayed than can conveniently be displayed on a single monitor. In one embodiment, the monitoring computer **113** is provided to multiple monitors located in different locations, thus allowing the data form the monitoring computer **113** to be displayed in multiple locations.

The sensor units **102-106** include sensors to measure conditions, such as, for example, smoke, temperature, moisture, water, water temperature, humidity, carbon monoxide, natural gas, propane gas, security alarms, intrusion alarms (e.g., open doors, broken windows, open windows, and the like), other flammable gases, radon, poison gasses, etc. Different sensor units can be configured with different sensors or with combinations of sensors. Thus, for example,

in one installation the sensor units **102** and **104** could be configured with smoke and/or temperature sensors while the sensor unit **103** could be configured with a humidity sensor.

The discussion that follows generally refers to the sensor unit **102** as an example of a sensor unit, with the understanding that the description of the sensor unit **102** can be applied to many sensor units. Similarly, the discussion generally refers to the repeater **110** by way of example, and not limitation. It will also be understood by one of ordinary skill in the art that repeaters are useful for extending the range of the sensor units **102-106** but are not required in all embodiments. Thus, for example in one embodiment, one or more of the sensor units **102-106** can communicate directly with the base unit **112** without going through a repeater. It will also be understood by one of ordinary skill in the art that FIG. **1** shows only five sensor units (**102-106**) and two repeater units (**110-111**) for purposes of illustration and not by way of limitation. An installation in a large apartment building or complex would typically involve many sensor units and repeater units. Moreover, one of ordinary skill in the art will recognize that one repeater unit can service relatively many sensor units. In one embodiment, the sensor units **102** can communicate directly with the base unit **112** without going through a repeater **111**.

When the sensor unit **102** detects an anomalous condition (e.g., smoke, fire, water, etc.) the sensor unit communicates with the appropriate repeater unit **110** and provides data regarding the anomalous condition. The repeater unit **110** forwards the data to the base unit **112**, and the base unit **112** forwards the information to the computer **113**. The computer **113** evaluates the data and takes appropriate action. If the computer **113** determines that the condition is an emergency (e.g., fire, smoke, large quantities of water), then the computer **113** contacts the appropriate personnel **120**. If the computer **113** determines that the situation warrants reporting, but is not an emergency, then the computer **113** logs the data for later reporting. In this way, the sensor system **100** can monitor the conditions in and around the building **101**.

In one embodiment, the sensor unit **102** has an internal power source (e.g., battery, solar cell, fuel cell, etc.). In order to conserve power, the sensor unit **102** is normally placed in a low-power mode. In one embodiment, using sensors that require relatively little power, while in the low power mode the sensor unit **102** takes regular sensor readings and evaluates the readings to determine if an anomalous condition exists. In one embodiment, using sensors that require relatively more power, while in the low power mode the sensor unit **102** takes and evaluates sensor readings at periodic intervals. If an anomalous condition is detected, then the sensor unit **102** “wakes up” and begins communicating with the base unit **112** through the repeater **110**. At programmed intervals, the sensor unit **102** also “wakes up” and sends status information (e.g., power levels, self-diagnostic information, etc.) to the base unit (or repeater) and then listens for commands for a period of time. In one embodiment, the sensor unit **102** also includes a tamper detector. When tampering with the sensor unit **102** is detected, the sensor unit **102** reports such tampering to the base unit **112**.

In one embodiment, the sensor unit **102** provides bi-directional communication and is configured to receive data and/or instructions from the base unit **112**. Thus, for example, the base unit **112** can instruct the sensor unit **102** to perform additional measurements, to go to a standby mode, to wake up, to report battery status, to change wake-up interval, to run self-diagnostics and report results, etc. In one embodiment, the sensor unit **102** reports its

general health and status on a regular basis (e.g., results of self-diagnostics, battery health, etc.).

In one embodiment, the sensor unit **102** provides two wake-up modes, a first wake-up mode for taking measurements (and reporting such measurements if deemed necessary), and a second wake-up mode for listening for commands from the central reporting station. The two wake-up modes, or combinations thereof, can occur at different intervals.

In one embodiment, the sensor unit **102** use spread-spectrum techniques to communicate with the repeater unit **110**. In one embodiment, the sensor unit **102** uses frequency-hopping spread-spectrum. In one embodiment, the sensor unit **102** has an address or identification (ID) code that distinguishes the sensor unit **102** from the other sensor units. The sensor unit **102** attaches its ID to outgoing communication packets so that transmissions from the sensor unit **102** can be identified by the repeater **110**. The repeater **110** attaches the ID of the sensor unit **102** to data and/or instructions that are transmitted to the sensor unit **102**. In one embodiment, the sensor unit **102** ignores data and/or instructions that are addressed to other sensor units.

In one embodiment, the sensor unit **102** includes a reset function. In one embodiment, the reset function is activated by the reset switch **208**. In one embodiment, the reset function is active for a prescribed interval of time. During the reset interval, the transceiver **203** is in a receiving mode and can receive the identification code from an external programmer. In one embodiment, the external programmer wirelessly transmits a desired identification code. In one embodiment, the identification code is programmed by an external programmer that is connected to the sensor unit **102** through an electrical connector. In one embodiment, the electrical connection to the sensor unit **102** is provided by sending modulated control signals (power line carrier signals) through a connector used to connect the power source **206**. In one embodiment, the external programmer provides power and control signals. In one embodiment, the external programmer also programs the type of sensor(s) installed in the sensor unit. In one embodiment, the identification code includes an area code (e.g., apartment number, zone number, floor number, etc.) and a unit number (e.g., unit 1, 2, 3, etc.).

In one embodiment, the sensor communicates with the repeater on the 900 MHz band. This band provides good transmission through walls and other obstacles normally found in and around a building structure. In one embodiment, the sensor communicates with the repeater on bands above and/or below the 900 MHz band. In one embodiment, the sensor, repeater, and/or base unit listen to a radio frequency channel before transmitting on that channel or before beginning transmission. If the channel is in use, (e.g., by another device such as another repeater, a cordless telephone, etc.) then the sensor, repeater, and/or base unit changes to a different channel. In one embodiment, the sensor, repeater, and/or base unit coordinate frequency hopping by listening to radio frequency channels for interference and using an algorithm to select a next channel for transmission that avoids the interference. Thus, for example, in one embodiment, if a sensor senses a dangerous condition and goes into a continuous transmission mode, the sensor will test (e.g., listen to) the channel before transmission to avoid channels that are blocked, in use, or jammed. In one embodiment, the sensor continues to transmit data until it receives an acknowledgement from the base unit that the message has been received. In one embodiment, the sensor transmits data having a normal priority (e.g., status information) and does not look for an acknowledgement, and the

sensor transmits data having elevated priority (e.g., excess smoke, temperature, etc.) until an acknowledgement is received.

The repeater unit **110** is configured to relay communications traffic between the sensor **102** (and, similarly, the sensor units **103-104**) and the base unit **112**. The repeater unit **110** typically operates in an environment with several other repeater units (such as the repeater unit **111** in FIG. 1) and thus the repeater unit **110** contains a database (e.g., a lookup table) of sensor unit IDs. In FIG. 1, the repeater **110** has database entries for the IDs of the sensors **102-104**, and thus the sensor **110** will only communicate with sensor units **102-104**. In one embodiment, the repeater **110** has an internal power source (e.g., battery, solar cell, fuel cell, etc.) and conserves power by maintaining an internal schedule of when the sensor units **102-104** are expected to transmit. In one embodiment, the repeater unit **110** goes to a low-power mode when none of its designated sensor units is scheduled to transmit. In one embodiment, the repeater **110** uses spread-spectrum techniques to communicate with the base unit **112** and with the sensor units **102-104**. In one embodiment, the repeater **110** uses frequency-hopping spread-spectrum to communicate with the base unit **112** and the sensor units **102-104**. In one embodiment, the repeater unit **110** has an address or identification (ID) code and the repeater unit **110** attaches its address to outgoing communication packets that originate in the repeater (that is, packets that are not being forwarded). In one embodiment, the repeater unit **110** ignores data and/or instructions that are addressed to other repeater units or to sensor units not serviced by the repeater **110**.

In one embodiment, the base unit **112** communicates with the sensor unit **102** by transmitting a communication packet addressed to the sensor unit **102**. The repeaters **110** and **111** both receive the communication packet addressed to the sensor unit **102**. The repeater unit **111** ignores the communication packet addressed to the sensor unit **102**. The repeater unit **110** transmits the communication packet addressed to the sensor unit **102** to the sensor unit **102**. In one embodiment, the sensor unit **102**, the repeater unit **110**, and the base unit **112** communicate using Frequency-Hopping Spread Spectrum (FHSS), also known as channel-hopping.

Frequency-hopping wireless systems offer the advantage of avoiding other interfering signals and avoiding collisions. Moreover, there are regulatory advantages given to systems that do not transmit continuously at one frequency. Channel-hopping transmitters change frequencies after a period of continuous transmission, or when interference is encountered. These systems may have higher transmit power and relaxed limitations on in-band spurs. FCC regulations limit transmission time on one channel to 400 milliseconds (averaged over 10-20 seconds depending on channel bandwidth) before the transmitter must change frequency. There is a minimum frequency step when changing channels to resume transmission. If there are 25 to 49 frequency channels, regulations allow effective radiated power of 24 dBm, spurs must be -20 dBc, and harmonics must be -41.2 dBc. With 50 or more channels, regulations allow effective radiated power to be up to 30 dBm.

In one embodiment, the sensor unit **102**, the repeater unit **110**, and the base unit **112** communicate using FHSS wherein the frequency hopping of the sensor unit **102**, the repeater unit **110**, and the base unit **112** are not synchronized such that at any given moment, the sensor unit **102** and the repeater unit **110** are on different channels. In such a system, the base unit **112** communicates with the sensor unit **102**

using the hop frequencies synchronized to the repeater unit **110** rather than the sensor unit **102**. The repeater unit **110** then forwards the data to the sensor unit using hop frequencies synchronized to the sensor unit **102**. Such a system largely avoids collisions between the transmissions by the base unit **112** and the repeater unit **110**.

In one embodiment, the sensor units **102-106** all use FHSS and the sensor units **102-106** are not synchronized. Thus, at any given moment, it is unlikely that any two or more of the sensor units **102-106** will transmit on the same frequency. In this manner, collisions are largely avoided. In one embodiment, collisions are not detected but are tolerated by the system **100**. If a collision does occur, data lost due to the collision is effectively re-transmitted the next time the sensor units transmit sensor data. When the sensor units **102-106** and repeater units **110-111** operate in asynchronous mode, then a second collision is highly unlikely because the units causing the collisions have hopped to different channels. In one embodiment, the sensor units **102-106**, repeater units **110-111**, and the base unit **112** use the same hop rate. In one embodiment, the sensor units **102-106**, repeater units **110-111**, and the base unit **112** use the same pseudo-random algorithm to control channel hopping, but with different starting seeds. In one embodiment, the starting seed for the hop algorithm is calculated from the ID of the sensor units **102-106**, repeater units **110-111**, or the base unit **112**.

In an alternative embodiment, the base unit communicates with the sensor unit **102** by sending a communication packet addressed to the repeater unit **110**, where the packet sent to the repeater unit **110** includes the address of the sensor unit **102**. The repeater unit **102** extracts the address of the sensor unit **102** from the packet and creates and transmits a packet addressed to the sensor unit **102**.

In one embodiment, the repeater unit **110** is configured to provide bi-directional communication between its sensors and the base unit **112**. In one embodiment, the repeater **110** is configured to receive instructions from the base unit **110**. Thus, for example, the base unit **112** can instruct the repeater to: send commands to one or more sensors; go to standby mode; "wake up"; report battery status; change wake-up interval; run self-diagnostics and report results; etc.

The base unit **112** is configured to receive measured sensor data from a number of sensor units either directly, or through the repeaters **110-111**. The base unit **112** also sends commands to the repeater units **110-111** and/or to the sensor units **110-111**. In one embodiment, the base unit **112** communicates with a diskless computer **113** that runs off of a CD-ROM. When the base unit **112** receives data from a sensor unit **102-111** indicating that there may be an emergency condition (e.g., a fire or excess smoke, temperature, water, etc.) the computer **113** will attempt to notify the responsible party **120**.

In one embodiment, the computer **112** maintains a database of the health, power status (e.g., battery charge), and current operating status of all of the sensor units **102-106** and the repeater units **110-111**. In one embodiment, the computer **113** automatically performs routine maintenance by sending commands to each sensor unit **102-106** to run a self-diagnostic and report the results. The computer **113** collects and logs such diagnostic results. In one embodiment, the computer **113** sends instructions to each sensor unit **102-106** telling the sensor how long to wait between "wake-up" intervals. In one embodiment, the computer **113** schedules different wakeup intervals to different sensor unit **102-106** based on the sensor unit's health, power status, location, etc. In one embodiment, the computer **113** schedules different wakeup intervals to different sensor unit **102-**

106 based on the type of data and urgency of the data collected by the sensor unit (e.g., sensor units that have smoke and/or temperature sensors produce data that should be checked relatively more often than sensor units that have humidity or moisture sensors). In one embodiment, the base unit sends instructions to repeaters to route sensor information around a failed repeater.

In one embodiment, the computer **113** produces a display that tells maintenance personnel which sensor units **102-106** need repair or maintenance. In one embodiment, the computer **113** maintains a list showing the status and/or location of each sensor according to the ID of each sensor.

In one embodiment, the sensor units **102-106** and/or the repeater units **110-111** measure the signal strength of the wireless signals received (e.g., the sensor unit **102** measures the signal strength of the signals received from the repeater unit **110**, the repeater unit **110** measures the signal strength received from the sensor unit **102** and/or the base unit **112**). The sensor units **102-106** and/or the repeater units **110-111** report such signal strength measurement back to the computer **113**. The computer **113** evaluates the signal strength measurements to ascertain the health and robustness of the sensor system **100**. In one embodiment, the computer **113** uses the signal strength information to re-route wireless communications traffic in the sensor system **100**. Thus, for example, if the repeater unit **110** goes offline or is having difficulty communicating with the sensor unit **102**, the computer **113** can send instructions to the repeater unit **111** to add the ID of the sensor unit **102** to the database of the repeater unit **111** (and similarly, send instructions to the repeater unit **110** to remove the ID of the sensor unit **102**), thereby routing the traffic for the sensor unit **102** through the router unit **111** instead of the router unit **110**.

FIG. 2 is a block diagram of the sensor unit **102**. In the sensor unit **102**, one or more sensors **201** and a transceiver **203** are provided to a controller **202**. The controller **202** typically provides power, data, and control information to the sensor(s) **201** and the transceiver **202**. A power source **206** is provided to the controller **202**. An optional tamper sensor **205** is also provided to the controller **202**. A reset device (e.g., a switch) **208** is provided to the controller **202**. In one embodiment, an optional audio output device **209** is provided. In one embodiment, the sensor **201** is configured as a plug-in module that can be replaced relatively easily.

In one embodiment, the transceiver **203** is based on a TRF **6901** transceiver chip from Texas Instruments, Inc. In one embodiment, the controller **202** is a conventional programmable microcontroller. In one embodiment, the controller **202** is based on a Field Programmable Gate Array (FPGA), such as, for example, provided by Xilinx Corp. In one embodiment, the sensor **201** includes an optoelectric smoke sensor with a smoke chamber. In one embodiment, the sensor **201** includes a thermistor. In one embodiment, the sensor **201** includes a humidity sensor. In one embodiment, the sensor **201** includes a sensor, such as, for example, a water level sensor, a water temperature sensor, a carbon monoxide sensor, a moisture sensor, a water flow sensor, natural gas sensor, propane sensor, etc.

The controller **202** receives sensor data from the sensor(s) **201**. Some sensors **201** produce digital data. However, for many types of sensors **201**, the sensor data is analog data. Analog sensor data is converted to digital format by the controller **202**. In one embodiment, the controller evaluates the data received from the sensor(s) **201** and determines whether the data is to be transmitted to the base unit **112**. The sensor unit **102** generally conserves power by not transmitting data that falls within a normal range. In one embodi-

ment, the controller **202** evaluates the sensor data by comparing the data value to a threshold value (e.g., a high threshold, a low threshold, or a high-low threshold). If the data is outside the threshold (e.g., above a high threshold, below a low threshold, outside an inner range threshold, or inside an outer range threshold), then the data is deemed to be anomalous and is transmitted to the base unit **112**. In one embodiment, the data threshold is programmed into the controller **202**. In one embodiment, the data threshold is programmed by the base unit **112** by sending instructions to the controller **202**. In one embodiment, the controller **202** obtains sensor data and transmits the data when commanded by the computer **113**.

In one embodiment, the tamper sensor **205** is configured as a switch that detects removal of or tampering with the sensor unit **102**.

FIG. 3 is a block diagram of the repeater unit **110**. In the repeater unit **110**, a first transceiver **302** and a second transceiver **305** are provided to a controller **303**. The controller **303** typically provides power, data, and control information to the transceivers **302, 304**. A power source **306** is provided to the controller **303**. An optional tamper sensor (not shown) is also provided to the controller **303**.

When relaying sensor data to the base unit **112**, the controller **303** receives data from the first transceiver **303** and provides the data to the second transceiver **304**. When relaying instructions from the base unit **112** to a sensor unit, the controller **303** receives data from the second transceiver **304** and provides the data to the first transceiver **302**. In one embodiment, the controller **303** conserves power by powering-down the transceivers **302, 304** during periods when the controller **303** is not expecting data. The controller **303** also monitors the power source **306** and provides status information, such as, for example, self-diagnostic information and/or information about the health of the power source **306**, to the base unit **112**. In one embodiment, the controller **303** sends status information to the base unit **112** at regular intervals. In one embodiment, the controller **303** sends status information to the base unit **112** when requested by the base unit **112**. In one embodiment, the controller **303** sends status information to the base unit **112** when a fault condition (e.g., battery low) is detected.

In one embodiment, the controller **303** includes a table or list of identification codes for wireless sensor units **102**. The repeater **303** forwards packets received from, or sent to, sensor units **102** in the list. In one embodiment, the repeater **110** receives entries for the list of sensor units from the computer **113**. In one embodiment, the controller **303** determines when a transmission is expected from the sensor units **102** in the table of sensor units and places the repeater **110** (e.g., the transceivers **302, 304**) in a low-power mode when no transmissions are expected from the transceivers on the list. In one embodiment, the controller **303** recalculates the times for low-power operation when a command to change reporting interval is forwarded to one of the sensor units **102** in the list (table) of sensor units or when a new sensor unit is added to the list (table) of sensor units.

FIG. 4 is a block diagram of the base unit **112**. In the base unit **112**, a transceiver **402** and a computer interface **404** are provided to a controller **403**. The controller **303** typically provides data and control information to the transceivers **402** and to the interface. The interface **402** is provided to a port on the monitoring computer **113**. The interface **402** can be a standard computer data interface, such as, for example, Ethernet, wireless Ethernet, firewire port, Universal Serial Bus (USB) port, bluetooth, etc.

11

FIG. 5 shows one embodiment a communication packet 500 used by the sensor units, repeater units, and the base unit. The packet 500 includes a preamble portion 501, an address (or ID) portion 502, a data payload portion 503, and an integrity portion 504. In one embodiment, the integrity portion 504 includes a checksum. In one embodiment, the sensor units 102-106, the repeater units 110-111, and the base unit 112 communicate using packets such as the packet 500. In one embodiment, the packets 500 are transmitted using FHSS.

In one embodiment, the data packets that travel between the sensor unit 102, the repeater unit 111, and the base unit 112 are encrypted. In one embodiment, the data packets that travel between the sensor unit 102, the repeater unit 111, and the base unit 112 are encrypted and an authentication code is provided in the data packet so that the sensor unit 102, the repeater unit, and/or the base unit 112 can verify the authenticity of the packet.

In one embodiment the address portion 502 includes a first code and a second code. In one embodiment, the repeater 111 only examines the first code to determine if the packet should be forwarded. Thus, for example, the first code can be interpreted as a building (or building complex) code and the second code interpreted as a subcode (e.g., an apartment code, area code, etc.). A repeater that uses the first code for forwarding thus forwards packets having a specified first code (e.g., corresponding to the repeater's building or building complex). Thus alleviates the need to program a list of sensor units 102 into a repeater, since a group of sensors in a building will typically all have the same first code but different second codes. A repeater so configured, only needs to know the first code to forward packets for any repeater in the building or building complex. This does, however, raise the possibility that two repeaters in the same building could try to forward packets for the same sensor unit 102. In one embodiment, each repeater waits for a programmed delay period before forwarding a packet. Thus reducing the chance of packet collisions at the base unit (in the case of sensor unit to base unit packets) and reducing the chance of packet collisions at the sensor unit (in the case of base unit to sensor unit packets). In one embodiment, a delay period is programmed into each repeater. In one embodiment, delay periods are pre-programmed onto the repeater units at the factory or during installation. In one embodiment, a delay period is programmed into each repeater by the base unit 112. In one embodiment, a repeater randomly chooses a delay period. In one embodiment, a repeater randomly chooses a delay period for each forwarded packet. In one embodiment, the first code is at least 6 digits. In one embodiment, the second code is at least 5 digits.

In one embodiment, the first code and the second code are programmed into each sensor unit at the factory. In one embodiment, the first code and the second code are programmed when the sensor unit is installed. In one embodiment, the base unit 112 can re-program the first code and/or the second code in a sensor unit.

In one embodiment, collisions are further avoided by configuring each repeater unit 111 to begin transmission on a different frequency channel. Thus, if two repeaters attempt to begin transmission at the same time, the repeaters will not interfere with each other because the transmissions will begin on different channels (frequencies).

FIG. 6 is a flowchart showing one embodiment of the operation of the sensor unit 102 wherein relatively continuous monitoring is provided. In FIG. 6, a power up block 601 is followed by an initialization block 602. After initialization, the sensor unit 102 checks for a fault condition (e.g.,

12

activation of the tamper sensor, low battery, internal fault, etc.) in a block 603. A decision block 604 checks the fault status. If a fault has occurred, then the process advances to a block 605 where the fault information is transmitted to the repeater 110 (after which, the process advances to a block 612); otherwise, the process advances to a block 606. In the block 606, the sensor unit 102 takes a sensor reading from the sensor(s) 201. The sensor data is subsequently evaluated in a block 607. If the sensor data is abnormal, then the process advances to a transmit block 609 where the sensor data is transmitted to the repeater 110 (after which, the process advances to a block 612); otherwise, the process advances to a timeout decision block 610. If the timeout period has not elapsed, then the process returns to the fault-check block 603; otherwise, the process advances to a transmit status block 611 where normal status information is transmitted to the repeater 110. In one embodiment, the normal status information transmitted is analogous to a simple "ping" which indicates that the sensor unit 102 is functioning normally. After the block 611, the process proceeds to a block 612 where the sensor unit 102 momentarily listens for instructions from the monitor computer 113. If an instruction is received, then the sensor unit 102 performs the instructions, otherwise, the process returns to the status check block 603. In one embodiment, transceiver 203 is normally powered down. The controller 202 powers up the transceiver 203 during execution of the blocks 605, 609, 611, and 612. The monitoring computer 113 can send instructions to the sensor unit 102 to change the parameters used to evaluate data used in block 607, the listen period used in block 612, etc.

Relatively continuous monitoring, such as shown in FIG. 6, is appropriate for sensor units that sense relatively high-priority data (e.g., smoke, fire, carbon monoxide, flammable gas, etc.). By contrast, periodic monitoring can be used for sensors that sense relatively lower priority data (e.g., humidity, moisture, water usage, etc.). FIG. 7 is a flowchart showing one embodiment of operation of the sensor unit 102 wherein periodic monitoring is provided. In FIG. 7, a power up block 701 is followed by an initialization block 702. After initialization, the sensor unit 102 enters a low-power sleep mode. If a fault occurs during the sleep mode (e.g., the tamper sensor is activated), then the process enters a wake-up block 704 followed by a transmit fault block 705. If no fault occurs during the sleep period, then when the specified sleep period has expired, the process enters a block 706 where the sensor unit 102 takes a sensor reading from the sensor(s) 201. The sensor data is subsequently sent to the monitoring computer 113 in a report block 707. After reporting, the sensor unit 102 enters a listen block 708 where the sensor unit 102 listens for a relatively short period of time for instructions from monitoring computer 708. If an instruction is received, then the sensor unit 102 performs the instructions, otherwise, the process returns to the sleep block 703. In one embodiment, the sensor 201 and transceiver 203 are normally powered down. The controller 202 powers up the sensor 201 during execution of the block 706. The controller 202 powers up the transceiver during execution of the blocks 705, 707, and 708. The monitoring computer 113 can send instructions to the sensor unit 102 to change the sleep period used in block 703, the listen period used in block 708, etc.

In one embodiment, the sensor unit transmits sensor data until a handshaking-type acknowledgement is received. Thus, rather than sleep of no instructions or acknowledgements are received after transmission (e.g., after the decision block 613 or 709) the sensor unit 102 retransmits its data and

waits for an acknowledgement. The sensor unit **102** continues to transmit data and wait for an acknowledgement until an acknowledgement is received. In one embodiment, the sensor unit accepts an acknowledgement from a repeater unit **111** and it then becomes the responsibility of the repeater unit **111** to make sure that the data is forwarded to the base unit **112**. In one embodiment, the repeater unit **111** does not generate the acknowledgement, but rather forwards an acknowledgement from the base unit **112** to the sensor unit **102**. The two-way communication ability of the sensor unit **102** provides the capability for the base unit **112** to control the operation of the sensor unit **102** and also provides the capability for robust handshaking-type communication between the sensor unit **102** and the base unit **112**.

Regardless of the normal operating mode of the sensor unit **102** (e.g., using the Flowcharts of FIG. 6, 7, or other modes) in one embodiment, the monitoring computer **113** can instruct the sensor unit **102** to operate in a relatively continuous mode where the sensor repeatedly takes sensor readings and transmits the readings to the monitoring computer **113**. Such a mode can be used, for example, when the sensor unit **102** (or a nearby sensor unit) has detected a potentially dangerous condition (e.g., smoke, rapid temperature rise, etc.).

FIG. 8 shows the sensor system used to detect water leaks. In one embodiment, the sensor unit **102** includes a water level sensor and **803** and/or a water temperature sensor **804**. The water level sensor **803** and/or water temperature sensor **804** are placed, for example, in a tray underneath a water heater **801** in order to detect leaks from the water heater **801** and thereby prevent water damage from a leaking water heater. In one embodiment, a temperature sensor is also provided to measure temperature near the water heater. The water level sensor can also be placed under a sink, in a floor sump, etc. In one embodiment, the severity of a leak is ascertained by the sensor unit **102** (or the monitoring computer **113**) by measuring the rate of rise in the water level. When placed near the hot water tank **801**, the severity of a leak can also be ascertained at least in part by measuring the temperature of the water. In one embodiment, a first water flow sensor is placed in an input water line for the hot water tank **801** and a second water flow sensor is placed in an output water line for the hot water tank. Leaks in the tank can be detected by observing a difference between the water flowing through the two sensors.

In one embodiment, a remote shutoff valve **810** is provided, so that the monitoring system **100** can shutoff the water supply to the water heater when a leak is detected. In one embodiment, the shutoff valve is controlled by the sensor unit **102**. In one embodiment, the sensor unit **102** receives instructions from the base unit **112** to shut off the water supply to the heater **801**. In one embodiment, the responsible party **120** sends instructions to the monitoring computer **113** instructing the monitoring computer **113** to send water shut off instructions to the sensor unit **102**. Similarly, in one embodiment, the sensor unit **102** controls a gas shutoff valve **811** to shut off the gas supply to the water heater **801** and/or to a furnace (not shown) when dangerous conditions (such as, for example, gas leaks, carbon monoxide, etc.) are detected. In one embodiment, a gas detector **812** is provided to the sensor unit **102**. In one embodiment, the gas detector **812** measures carbon monoxide. In one embodiment, the gas detector **812** measures flammable gas, such as, for example, natural gas or propane.

In one embodiment, an optional temperature sensor **818** is provided to measure stack temperature. Using data from the temperature sensor **818**, the sensor unit **102** reports condi-

tions, such as, for example, excess stack temperature. Excess stack temperature is often indicative of poor heat transfer (and thus poor efficiency) in the water heater **818**.

In one embodiment, an optional temperature sensor **819** is provided to measure temperature of water in the water heater **810**. Using data from the temperature sensor **819**, the sensor unit **102** reports conditions, such as, for example, over-temperature or under-temperature of the water in the water heater.

In one embodiment, an optional current probe **821** is provided to measure electric current provided to a heating element **820** in an electric water heater. Using data from the current probe **821**, the sensor unit **102** reports conditions, such as, for example, no current (indicating a burned-out heating element **820**). An over-current condition often indicates that the heating element **820** is encrusted with mineral deposits and needs to be replaced or cleaned. By measuring the current provided to the water heater, the monitoring system can measure the amount of energy provided to the water heater and thus the cost of hot water, and the efficiency of the water heater.

In one embodiment, the sensor **803** includes a moisture sensor. Using data from the moisture sensor, the sensor unit **102** reports moisture conditions, such as, for example, excess moisture that would indicate a water leak, excess condensation, etc.

In one embodiment, the sensor unit **102** is provided to a moisture sensor (such as the sensor **803**) located near an air conditioning unit. Using data from the moisture sensor, the sensor unit **102** reports moisture conditions, such as, for example, excess moisture that would indicate a water leak, excess condensation, etc.

In one embodiment, the sensor **201** includes a moisture sensor. The moisture sensor can be placed under a sink or a toilet (to detect plumbing leaks) or in an attic space (to detect roof leaks).

Excess humidity in a structure can cause severe problems such as rotting, growth of molds, mildew, and fungus, etc. (hereinafter referred to generically as fungus). In one embodiment, the sensor **201** includes a humidity sensor. The humidity sensor can be placed under a sink, in an attic space, etc. to detect excess humidity (due to leaks, condensation, etc.). In one embodiment, the monitoring computer **113** compares humidity measurements taken from different sensor units in order to detect areas that have excess humidity. Thus for example, the monitoring computer **113** can compare the humidity readings from a first sensor unit **102** in a first attic area, to a humidity reading from a second sensor unit **102** in a second area. For example, the monitoring computer can take humidity readings from a number of attic areas to establish a baseline humidity reading and then compare the specific humidity readings from various sensor units to determine if one or more of the units are measuring excess humidity. The monitoring computer **113** would flag areas of excess humidity for further investigation by maintenance personnel. In one embodiment, the monitoring computer **113** maintains a history of humidity readings for various sensor units and flags areas that show an unexpected increase in humidity for investigation by maintenance personnel.

In one embodiment, the monitoring system **100** detects conditions favorable for fungus (e.g., mold, mildew, fungus, etc.) growth by using a first humidity sensor located in a first building area to produce first humidity data and a second humidity sensor located in a second building area to produce second humidity data. The building areas can be, for

15

example, areas near a sink drain, plumbing fixture, plumbing, attic areas, outer walls, a bilge area in a boat, etc.

The monitoring station **113** collects humidity readings from the first humidity sensor and the second humidity sensor and indicates conditions favorable for fungus growth by comparing the first humidity data and the second humidity data. In one embodiment, the monitoring station **113** establishes a baseline humidity by comparing humidity readings from a plurality of humidity sensors and indicates possible fungus growth conditions in the first building area when at least a portion of the first humidity data exceeds the baseline humidity by a specified amount. In one embodiment, the monitoring station **113** establishes a baseline humidity by comparing humidity readings from a plurality of humidity sensors and indicates possible fungus growth conditions in the first building area when at least a portion of the first humidity data exceeds the baseline humidity by a specified percentage.

In one embodiment, the monitoring station **113** establishes a baseline humidity history by comparing humidity readings from a plurality of humidity sensors and indicates possible fungus growth conditions in the first building area when at least a portion of the first humidity data exceeds the baseline humidity history by a specified amount over a specified period of time. In one embodiment, the monitoring station **113** establishes a baseline humidity history by comparing humidity readings from a plurality of humidity sensors over a period of time and indicates possible fungus growth conditions in the first building area when at least a portion of the first humidity data exceeds the baseline humidity by a specified percentage of a specified period of time.

In one embodiment, the sensor unit **102** transmits humidity data when it determines that the humidity data fails a threshold test. In one embodiment, the humidity threshold for the threshold test is provided to the sensor unit **102** by the monitoring station **113**. In one embodiment, the humidity threshold for the threshold test is computed by the monitoring station from a baseline humidity established in the monitoring station. In one embodiment, the baseline humidity is computed at least in part as an average of humidity readings from a number of humidity sensors. In one embodiment, the baseline humidity is computed at least in part as a time average of humidity readings from a number of humidity sensors. In one embodiment, the baseline humidity is computed at least in part as a time average of humidity readings from a humidity sensor. In one embodiment, the baseline humidity is computed at least in part as the lesser of a maximum humidity reading an average of a number of humidity readings.

In one embodiment, the sensor unit **102** reports humidity readings in response to a query by the monitoring station **113**. In one embodiment, the sensor unit **102** reports humidity readings at regular intervals. In one embodiment, a humidity interval is provided to the sensor unit **102** by the monitoring station **113**.

In one embodiment, the calculation of conditions for fungus growth is comparing humidity readings from one or more humidity sensors to the baseline (or reference) humidity. In one embodiment, the comparison is based on comparing the humidity readings to a percentage (e.g., typically a percentage greater than 100%) of the baseline value. In one embodiment, the comparison is based on comparing the humidity readings to a specified delta value above the reference humidity. In one embodiment, the calculation of likelihood of conditions for fungus growth is based on a time history of humidity readings, such that the longer the favor-

16

able conditions exist, the greater the likelihood of fungus growth. In one embodiment, relatively high humidity readings over a period of time indicate a higher likelihood of fungus growth than relatively high humidity readings for short periods of time. In one embodiment, a relatively sudden increase in humidity as compared to a baseline or reference humidity is reported by the monitoring station **113** as a possibility of a water leak. If the relatively high humidity reading continues over time then the relatively high humidity is reported by the monitoring station **113** as possibly being a water leak and/or an area likely to have fungus growth or water damage.

Temperatures relatively more favorable to fungus growth increase the likelihood of fungus growth. In one embodiment, temperature measurements from the building areas are also used in the fungus grown-likelihood calculations. In one embodiment, a threshold value for likelihood of fungus growth is computed at least in part as a function of temperature, such that temperatures relatively more favorable to fungus growth result in a relatively lower threshold than temperatures relatively less favorable for fungus growth. In one embodiment, the calculation of a likelihood of fungus growth depends at least in part on temperature such that temperatures relatively more favorable to fungus growth indicate a relatively higher likelihood of fungus growth than temperatures relatively less favorable for fungus growth. Thus, in one embodiment, a maximum humidity and/or minimum threshold above a reference humidity is relatively lower for temperature more favorable to fungus growth than the maximum humidity and/or minimum threshold above a reference humidity for temperatures relatively less favorable to fungus growth.

In one embodiment, a water flow sensor is provided to the sensor unit **102**. The sensor unit **102** obtains water flow data from the water flow sensor and provides the water flow data to the monitoring computer **113**. The monitoring computer **113** can then calculate water usage. Additionally, the monitoring computer can watch for water leaks, by, for example, looking for water flow when there should be little or no flow. Thus, for example, if the monitoring computer detects water usage throughout the night, the monitoring computer can raise an alert indicating that a possible water leak has occurred.

In one embodiment, the sensor **201** includes a water flow sensor is provided to the sensor unit **102**. The sensor unit **102** obtains water flow data from the water flow sensor and provides the water flow data to the monitoring computer **113**. The monitoring computer **113** can then calculate water usage. Additionally, the monitoring computer can watch for water leaks, by, for example, looking for water flow when there should be little or no flow. Thus, for example, if the monitoring computer detects water usage throughout the night, the monitoring computer can raise an alert indicating that a possible water leak has occurred.

In one embodiment, the sensor **201** includes a fire-extinguisher tamper sensor is provided to the sensor unit **102**. The fire-extinguisher tamper sensor reports tampering with or use of a fire-extinguisher. In one embodiment the fire-extinguisher tamper sensor reports that the fire extinguisher has been removed from its mounting, that a fire extinguisher compartment has been opened, and/or that a safety lock on the fire extinguisher has been removed.

It will be evident to those skilled in the art that the invention is not limited to the details of the foregoing illustrated embodiments and that the present invention may be embodied in other specific forms without departing from the spirit or essential attributed thereof; furthermore, various

17

omissions, substitutions and changes may be made without departing from the spirit of the inventions. For example, although specific embodiments are described in terms of the 900 MHz frequency band, one of ordinary skill in the art will recognize that frequency bands above and below 900 MHz can be used as well. The wireless system can be configured to operate on one or more frequency bands, such as, for example, the HF band, the VHF band, the UHF band, the Microwave band, the Millimeter wave band, etc. One of ordinary skill in the art will further recognize that techniques other than spread spectrum can also be used and/or can be use instead spread spectrum. The modulation uses is not limited to any particular modulation method, such that modulation scheme used can be, for example, frequency modulation, phase modulation, amplitude modulation, combinations thereof, etc. The foregoing description of the embodiments is therefore to be considered in all respects as illustrative and not restrictive, with the scope of the invention being delineated by the appended claims and their equivalents.

What is claimed is:

1. An audio-enabled wireless device configured for bidirectional wireless communication in a wireless mesh network, the wireless device comprising:

a wireless transceiver;
an audio output element;
a reset element; and

a controller operatively coupled to the wireless transceiver, the audio output element, and the reset element, the controller being configured to:

receive a communication packet using the wireless transceiver, the communication packet including a preamble portion, an identification code portion, a data payload portion, and an integrity portion;

compare at least the identification code portion of the received communication packet to a table of identifiers stored in the audio-enabled wireless device;

based on the comparison of the identification code portion of the received communication packet matching an entry in the table of identifiers stored in the audio-enabled wireless device, determine to relay the communication packet to another audio-enabled wireless device; and

relay the communication packet to the other audio-enabled wireless device.

2. The audio-enabled wireless device of claim 1, the controller configured to:

prior to the relay of the communication packet, listen to a radio frequency channel to determine the radio frequency channel is not in use by another device; and transmit, via the radio frequency channel, the communication packet.

3. The audio-enabled wireless device of claim 2, the controller configured to:

prior to the transmission of the communication packet, determine a delay value; and wait the determined delay value before the transmission of the communication packet.

4. The audio-enabled wireless device of claim 3, wherein the delay value is a random delay value.

5. The audio-enabled wireless device of claim 1, wherein if the identification code portion of the received communication packet does not match an entry in the table of identifiers stored in the audio-enabled wireless device, the controller is configured to not relay the communication packet.

18

6. The audio-enabled wireless device of claim 1, wherein the wireless transceiver is configured for spread-spectrum communication, and wherein the wireless transceiver is configured to communicate in one or more frequency bands above a 900 MHz band.

7. The audio-enabled wireless device of claim 1, wherein the audio-enabled wireless device includes an Ethernet network connection, and wherein the controller is configured to communicate, using the Ethernet connection, via the Internet.

8. The wireless device of claim 1, wherein the reset element is a reset switch and wherein the reset switch is configured to activate a reset function.

9. A method of forwarding a communication packet by an audio-enabled wireless device, the method comprising:

receiving, by the audio-enabled wireless device using a wireless transceiver configured for bidirectional wireless communication, the communication packet, the communication packet including a preamble portion, an identification code portion, a data payload portion, and an integrity portion, the audio-enabled wireless device including an audio output element and a reset element;

comparing at least the identification code portion of the received communication packet to a table of identifiers stored in the audio-enabled wireless device;

based on the comparing indicating that the identification code portion of the received communication packet matches an entry in the table of identifiers stored in the audio-enabled wireless device, determining to relay the communication packet to another audio-enabled wireless device; and

relaying the communication packet to the other audio-enabled wireless device.

10. The method of claim 9, comprising:

prior to the relaying the communication packet, listening to a radio frequency channel to determine the radio frequency channel is not in use by another device; and transmitting, via the radio frequency channel, the communication packet.

11. The method of claim 10, comprising:

prior to the transmitting the communication packet, determining a delay value; and waiting the determined delay value before the transmitting the communication packet.

12. The method of claim 11, wherein the delay value is a random delay value.

13. The method of claim 9, wherein the wireless transceiver is configured for spread-spectrum communication and wherein the wireless transceiver is configured to communicate in one or more frequency bands above a 900 MHz band.

14. The method of claim 9, wherein the reset element is a reset switch, the method comprising:

activating a reset function of the audio-enabled wireless device in response to an input to the reset switch.

15. A wireless mesh network system, comprising:

multiple audio-enabled wireless devices, each of the multiple audio-enabled wireless devices comprising a wireless transceiver, a reset element, and an audio output element, each of the audio-enabled wireless devices being configured to:

receive, using the wireless transceiver a communication packet, the communication packet including a preamble portion, an identification code portion, a data payload portion, and an integrity portion;

19

compare at least the identification code portion of the received communication packet to a table of identifiers stored in the audio-enabled wireless device; based on the comparison of the identification code portion of the received communication packet matching an entry in the table of identifiers stored in the audio-enabled wireless device, determine to relay the communication packet to another of the multiple audio-enabled wireless devices; and relay the communication packet to the other of the multiple audio-enabled wireless devices.

16. The wireless mesh network system of claim 15, wherein one or more of the multiple audio-enabled wireless devices includes an Ethernet network connection, the one or more of the multiple audio-enabled wireless devices being configured to:

communicate, using the Ethernet network connection, via the Internet; and

transmit one or more commands to other of the multiple audio-enabled wireless devices.

17. The wireless mesh network system of claim 15, wherein each of the multiple audio-enabled wireless devices is configured for spread-spectrum communication and wherein each of the multiple audio-enabled wireless devices is configured to communicate in one or more frequency bands above a 900 MHz band.

20

18. The wireless mesh network system of claim 15, wherein each of the multiple audio-enabled wireless devices is configured to:

prior to a transmission of one or more communication packets, listen to a radio frequency channel to determine the radio frequency channel is not in use by another device; and

transmit, via the radio frequency channel, the one or more communication packets.

19. The wireless mesh network system of claim 15, wherein each of the multiple audio-enabled wireless devices is configured to:

listen to a radio frequency channel to determine if the radio frequency channel is in use; and

switch to a different radio frequency channel when the radio frequency channel is in use.

20. The wireless mesh network system of claim 15, wherein each of the multiple audio-enabled wireless devices is configured to:

prior to a transmission of one or more communication packets, determine a delay value; and

wait the determined delay value before the transmission of the one or more communication packets.

* * * * *