



US006597688B2

(12) **United States Patent**
Narasimhan et al.

(10) **Patent No.:** **US 6,597,688 B2**
(45) **Date of Patent:** ***Jul. 22, 2003**

(54) **SCALABLE ARCHITECTURE FOR TRANSMISSION OF MESSAGES OVER A NETWORK**

(75) Inventors: **Anand Narasimhan**, Beverly Hills, CA (US); **Yaacov Shemesh**, Los Angeles, CA (US); **Amit Kumar**, Los Angeles, CA (US)

(73) Assignee: **j2 Global Communications, Inc.**, Hollywood, CA (US)

(*) Notice: This patent issued on a continued prosecution application filed under 37 CFR 1.53(d), and is subject to the twenty year patent term provisions of 35 U.S.C. 154(a)(2).

Subject to any disclaimer, the term of this patent is extended or adjusted under 35 U.S.C. 154(b) by 0 days.

(21) Appl. No.: **09/097,307**

(22) Filed: **Jun. 12, 1998**

(65) **Prior Publication Data**

US 2002/0181496 A1 Dec. 5, 2002

(51) **Int. Cl.**⁷ **H04L 12/56**

(52) **U.S. Cl.** **370/353; 370/465; 370/355; 370/356; 379/220.01**

(58) **Field of Search** **370/237, 242, 370/252, 352, 353, 360, 389, 401, 465; 379/112, 114, 200, 220; 709/206, 228**

(56) **References Cited**

U.S. PATENT DOCUMENTS

4,941,170 A	7/1990	Herbst
5,193,110 A	3/1993	Jones et al.
5,339,156 A	8/1994	Ishii
5,406,557 A *	4/1995	Baudoin 370/61
5,487,100 A	1/1996	Kane
5,604,788 A	2/1997	Tett
5,608,786 A	3/1997	Gordon
5,675,507 A	10/1997	Bobo, II
5,712,907 A	1/1998	Wegner et al.
5,740,231 A	4/1998	Cohn et al.
5,742,668 A	4/1998	Pepe et al.
5,742,905 A	4/1998	Pepe et al.

5,758,088 A	5/1998	Bezair et al.
5,765,033 A	6/1998	Miloslavsky
5,812,786 A *	9/1998	Seazholtz et al. 395/200.63
5,870,454 A	2/1999	Dahlen
5,999,594 A	12/1999	Mizoguchi et al.
5,999,965 A *	12/1999	Kelly 709/202
6,025,931 A	2/2000	Bloomfield
6,073,165 A *	6/2000	Narasimhan et al. 709/206
6,208,638 B1 *	3/2001	Rieley et al. 370/354
6,215,858 B1	4/2001	Bartholomew et al.
6,246,983 B1	6/2001	Zou et al.
6,259,533 B1	7/2001	Toyoda et al.
6,263,064 B1	7/2001	O'Neal et al.
6,330,079 B1	12/2001	Dugan et al.
6,339,591 B1	1/2002	Migimatsu
6,341,160 B2	1/2002	Tverskoy et al.
6,356,356 B1	3/2002	Miller, Jr. et al.

OTHER PUBLICATIONS

L. Orozco-Barbosa, D. Makrakis, C.H. Yang, and N.D. Georganas, Design and performance evaluation of intelligent multimedia services, Computer Communications 20 (1997) pp. 219-232.*

* cited by examiner

Primary Examiner—Hassan Kizou

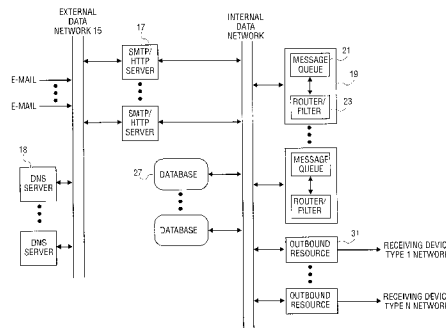
Assistant Examiner—Thai Hoang

(74) *Attorney, Agent, or Firm*—Blakely Sokoloff Taylor & Zafman

(57) **ABSTRACT**

A system for supporting a message delivery service, a method for supporting such a service and a machine accessible medium containing program data for implementing such a system. A number of processing servers are coupled to communicate with a number of outbound resources and a database server over an internal packet-switched data network. The database server contains account information on customers of the service. Request messages received from a customer over an external packet-switched data network are stored in a queue of a processing server. A router filter obtains a request message from the queue and validates a customer associated with the request message, after accessing the database server. A determination is made as to which of the multiple outbound resources to assign the request message. Each of these resources is capable of converting an input request message into a format capable of being received by a fax machine over a telephone network.

27 Claims, 8 Drawing Sheets



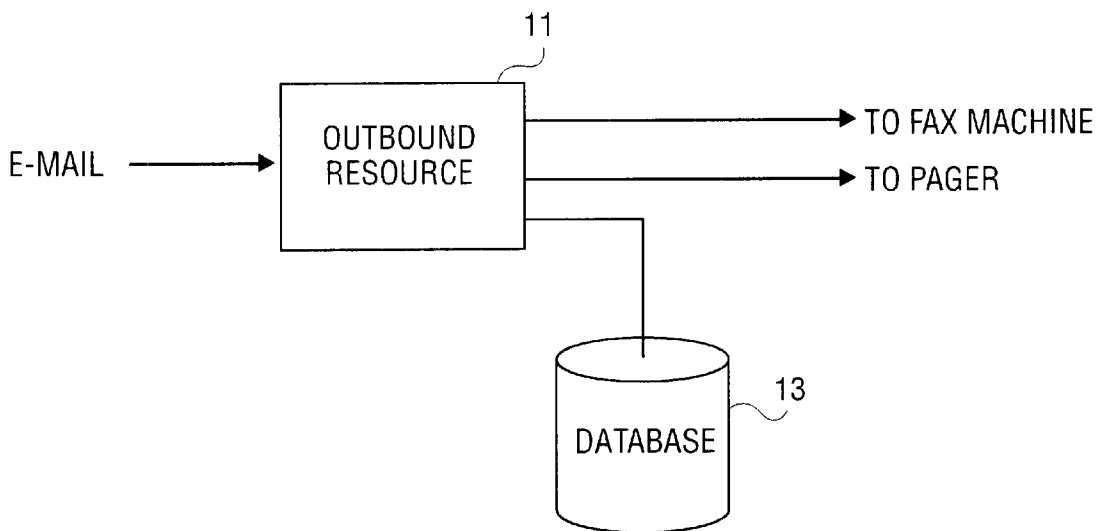


FIG. 1
(PRIOR ART)

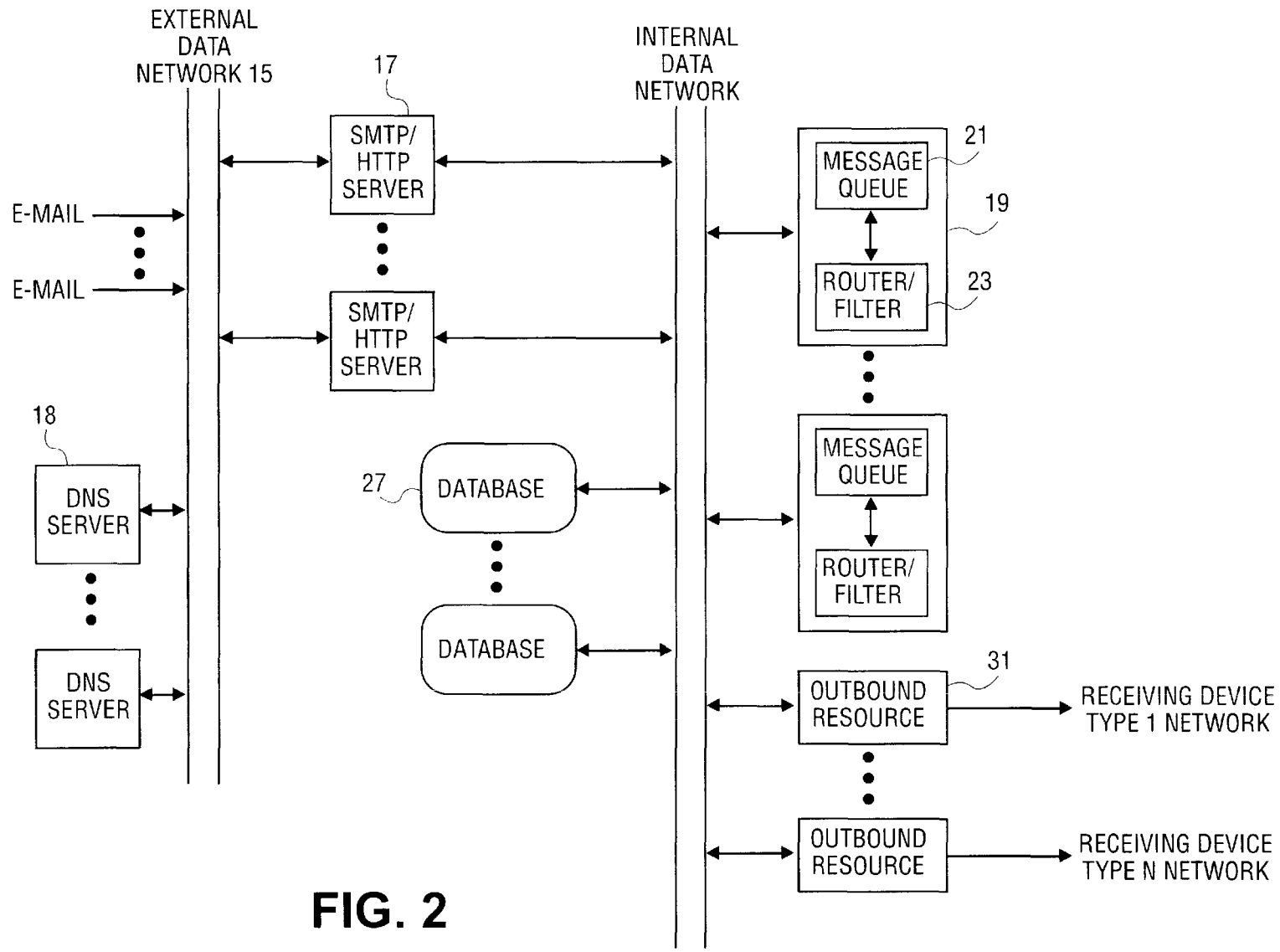


FIG. 2

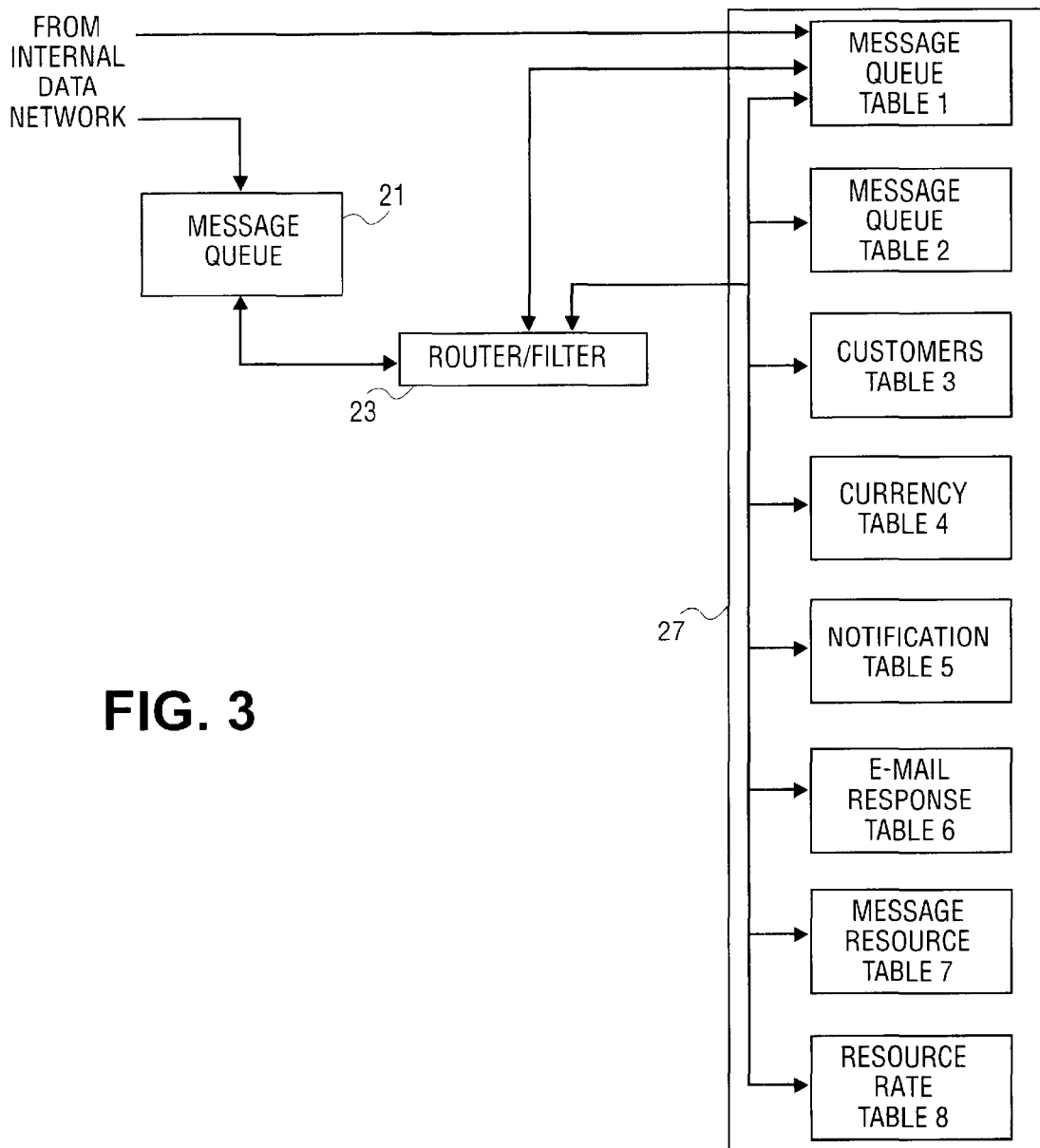


FIG. 3

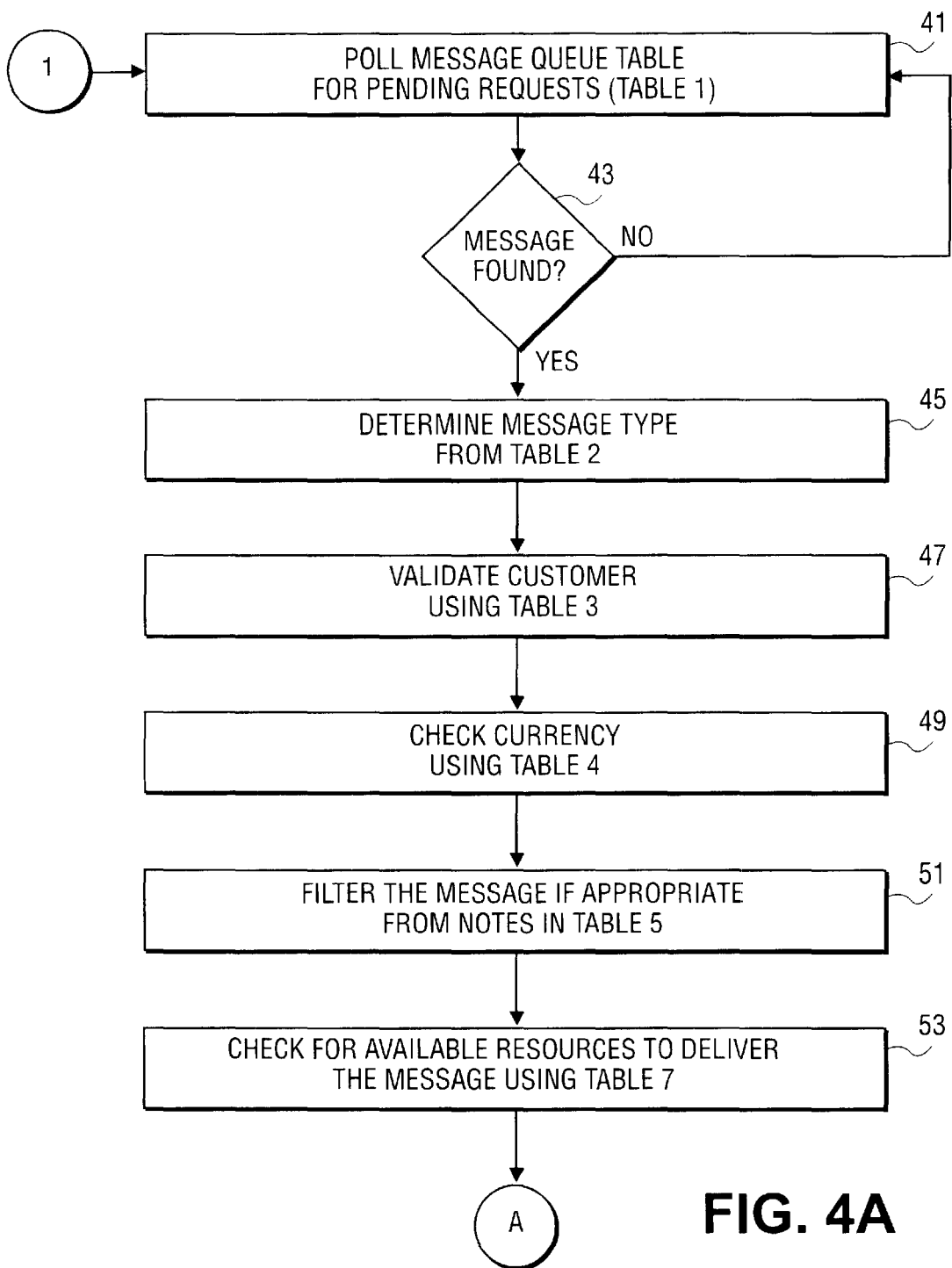


FIG. 4A

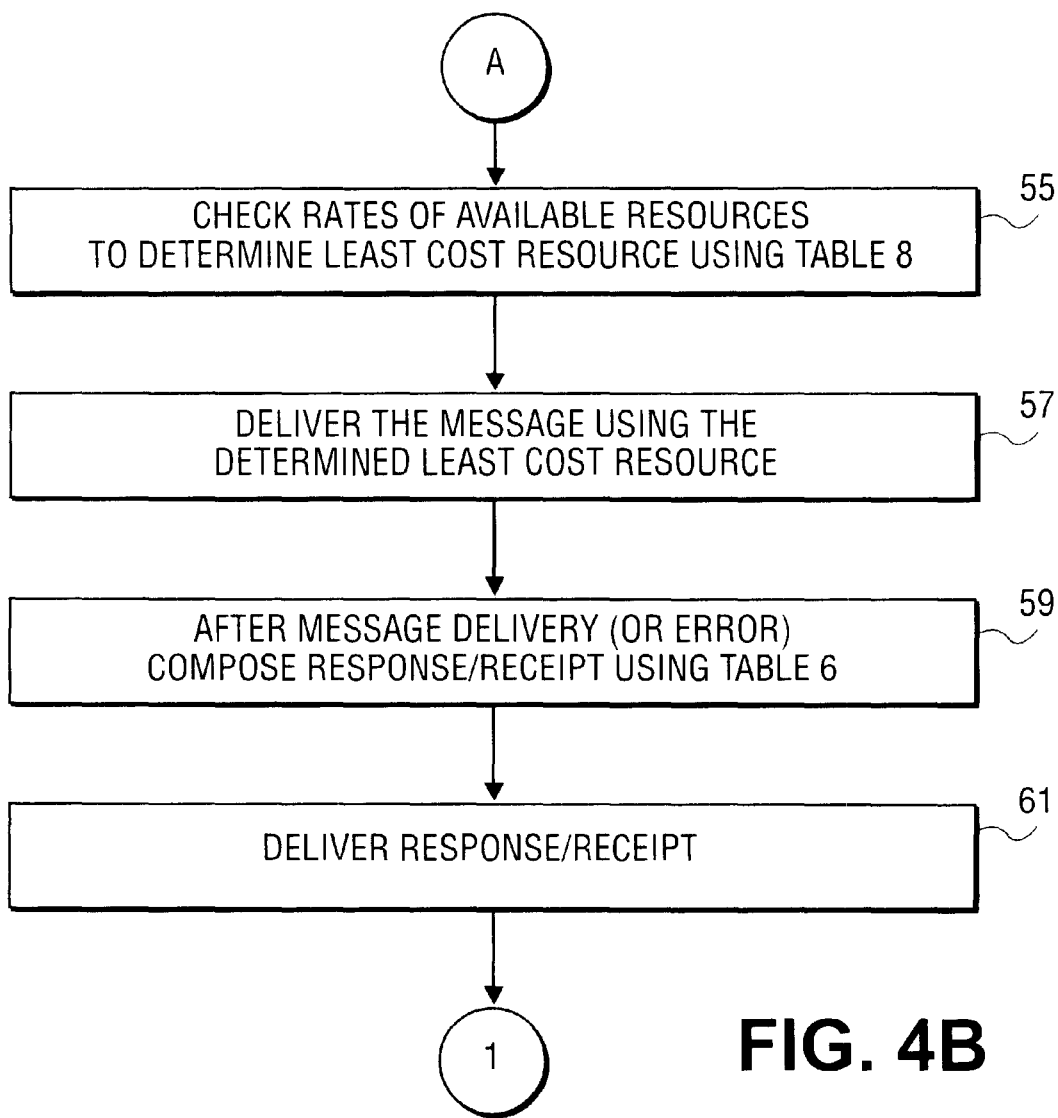


FIG. 4B

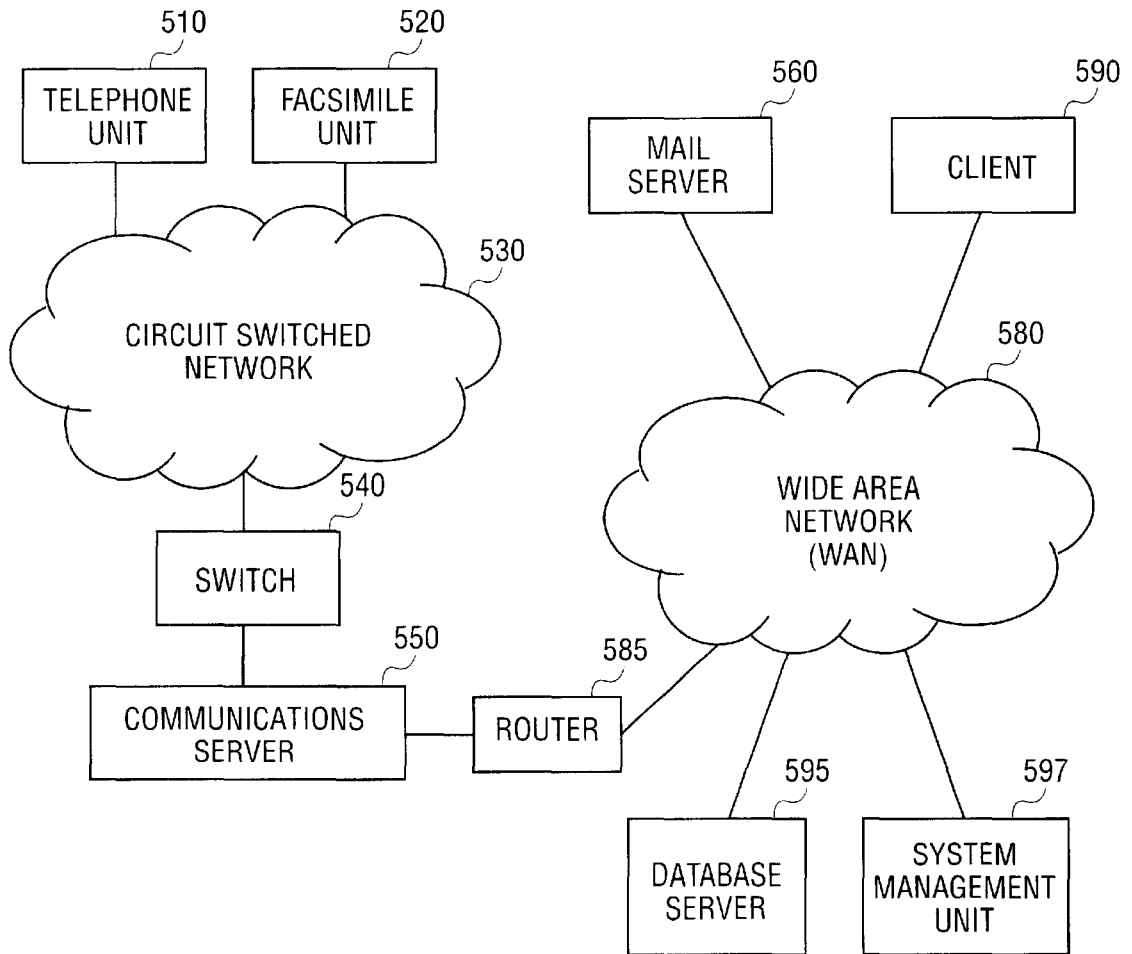


FIG. 5

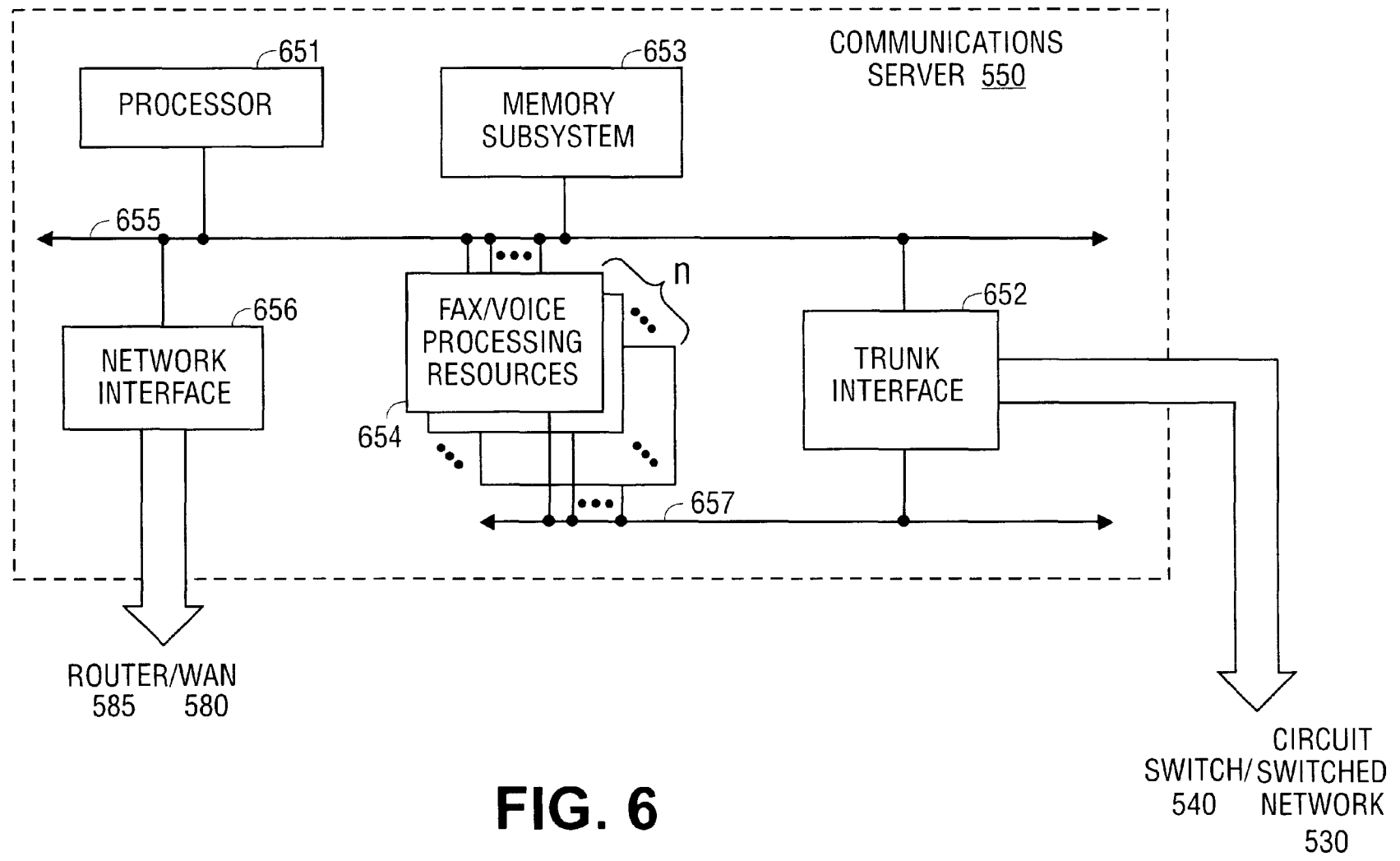


FIG. 6

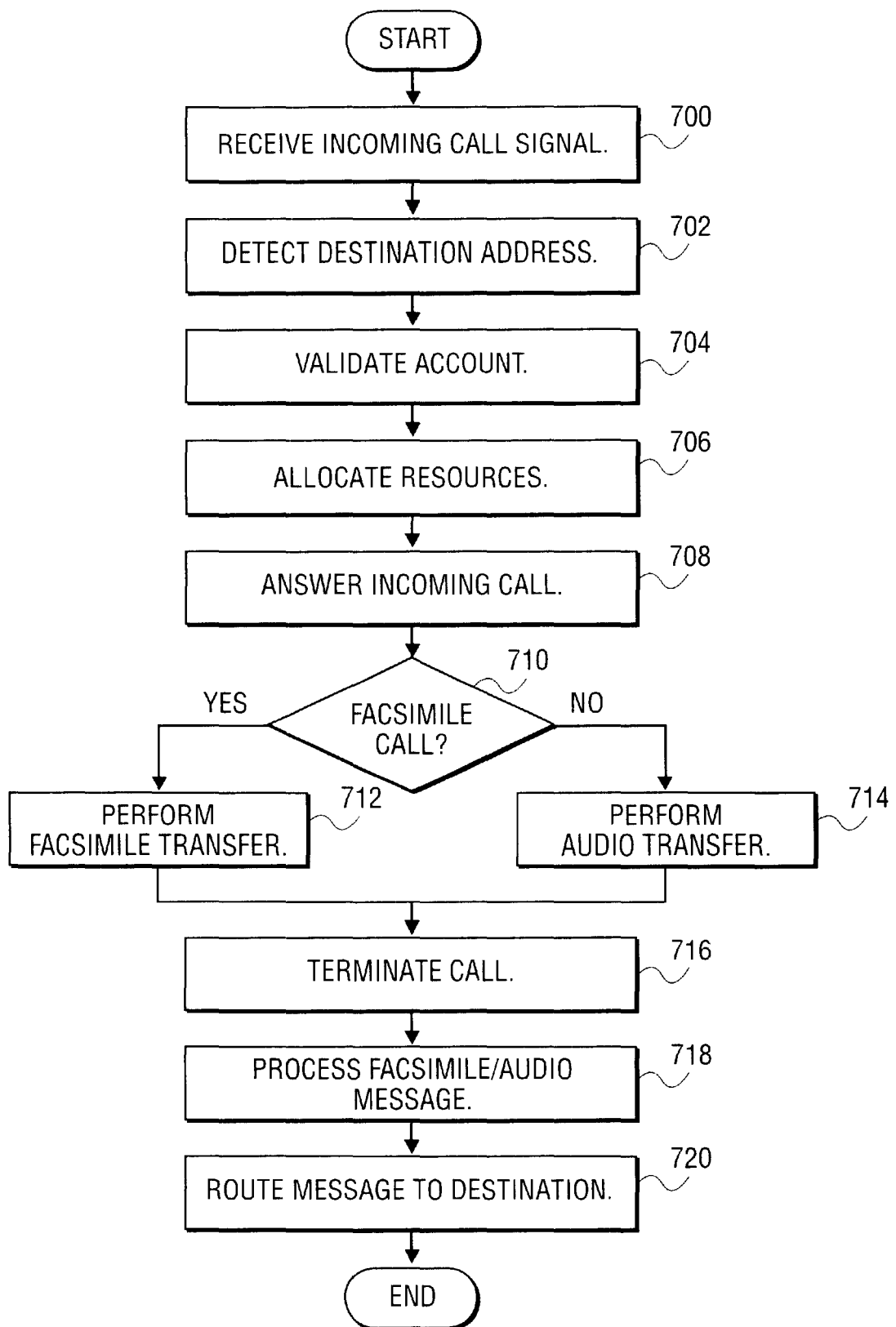


FIG. 7

SCALABLE ARCHITECTURE FOR TRANSMISSION OF MESSAGES OVER A NETWORK

BACKGROUND OF THE INVENTION

The present invention relates to the field of message receipt/transmission and delivery using computer, phone, wireless and other communications networks. Specifically, the present invention relates to the transmission of e-mail messages which may be text only, text plus an audio file, text plus a video file, text plus a fax file or any combination thereof to a phone, pager or fax machine or other receiving device suitable for the message content, over appropriate communications networks using an architecture which enables easy expansion to handle additional message traffic as well as to connect to additional communications networks, including networks which do not presently exist which may become available in the future.

DESCRIPTION OF RELATED ART

Voice and data communications systems such as the public switched telephone network (PSTN) are currently used to transfer image and text data transmitted by facsimile ("fax") machines in addition to the normally carried voice traffic. These faxed images are usually transmitted through the PSTN and received for printout or storage of the image on a destination fax machine or computer for the use by the recipient.

In U.S. Pat. No. 6,208,638 entitled Method and Apparatus for Transmission and Retrieval of Facsimile and Audio Messages Over a Circuit or Packet Switched Network, it is disclosed that to provide for the receipt and transmission of audio and fax information by a first user over a circuit switched network such as the public switched telephone network (PSTN) to a second user over a packet switched network such as the Internet, a communications server is connected both to the circuit switched network and a packet switched network.

The communications server contains resources to receive and process incoming audio and facsimile calls from the circuit switched network into a format suitable for transmission over the packet switched network to the second user's address. In addition, a link is first determined between the second user's address on the circuit switched network and the second user's address on the packet switched network, and then an appropriate route to the second user's address on the packet network is determined. With the system being maintained in a distributed and redundant fashion, reliable receipt and transfer of all messages is ensured.

However, the architecture utilized as described in U.S. Pat. No. 6,208,638 is not easily scalable to handle increasingly higher levels of message traffic or to easily connect to networks in addition to the PSTN and the Internet. FIG. 1 shows the essence of the architecture of U.S. Pat. No. 6,208,638. An e-mail message is passed to an outbound resource **11** (communications server **550** in U.S. Pat. No. 6,208,638) which converts the e-mail message to a fax format or to audio for transmission to a fax machine or telephone connected to the PSTN. A database **13** stores customer information necessary for processing of messages

(an unnumbered part of communications server **150** in U.S. Pat. No. 6,208,638 which is also contained in database server **195** in U.S. Pat. No. 6,208,638). After processing of an e-mail message by outbound resource **11**, a fax or voice mail message is sent over the PSTN or more generally, a generalized switched telephone network (GSTN) which includes cellular telephone networks as well as the PSTN. Optionally, a pager message may also be sent informing a user of the fax which has been sent or availability of a voice mail message as described in U.S. Pat. No. 6,073,165 entitled Processing and Forwarding Messages From a Computer Network to a Forwarding Service.

SUMMARY OF THE INVENTION

A system for supporting a message delivery service is described that has a highly scalable architecture. Multiple processing servers are each coupled to communicate with multiple outbound resources and with a database server over an internal packet-switched data network. The database server contains account information on customers of the service. Request messages received from a customer over an external packet-switched data network (such as the Internet) are stored in a queue. The queue is polled for pending requests and a request message is obtained therefrom. A customer associated with this obtained request message is validated after accessing the account information in the database server. An outbound resource is assigned to this request message, where each of these resources is capable of converting an input request message into a format capable of being received by a fax machine over a telephone network.

BRIEF DESCRIPTION OF THE DRAWINGS

FIG. 1 is a block diagram of a prior art architecture which performs the functions, but not the scalability of the architecture of the present invention.

FIG. 2 is a block diagram illustrating the architecture of the present invention.

FIG. 3 is a block diagram showing the data/control flow through message queue **21**, router/filter **23** and database **27**.

FIG. 4 (**4a** and **4b**) is a flow diagram of the processing performed by router/filter **23**.

FIG. 5 is a system diagram of a network containing a message server.

FIG. 6 is a block diagram illustrating the message server.

FIG. 7 is a flow diagram illustrating some operations.

DETAILED DESCRIPTION OF THE INVENTION

The present invention provides a method and apparatus for allowing the receipt and transmission of audio, video and fax information between a circuit switched network and a packet switched network. For purposes of explanation, specific embodiments are set forth to provide a thorough understanding of the present invention. However, it will be understood by one skilled in the art, that the invention may be practiced without these details. Further, although the present invention is described through the use of circuit switched and packet switched networks, most, if not all, aspects of the invention apply to all networks in general. Moreover, well-known elements, devices, process steps and

the like are not set forth in detail in order to avoid obscuring the present invention.

Referring now to FIG. 2, e-mail messages for a customer are sent to/through an external data network 15 (e.g., the Internet) and routed to an appropriate SMTP/HTTP (or SHTTP) server 17 as determined by a domain name server (DNS) 18 according to well known techniques. The e-mail message may be a text message or it may include a file, the content of which may be audio, video or bitmapped (e.g., a fax) or other data. Again, the techniques for creating and sending e-mail messages with these characteristics are well known.

A processing server 19, which includes a message queue 21 and a router/filter 23 first verifies that the message is from or is to a customer using information in database 27. After successful verification, the message is broken into fragments (in the case of files with multiple attachments) and written to message queue 21. Router/filter 23 obtains messages from the message queue and handles least call routing/billing/prioritization/filtering of messages. Filtering is primarily for notification messages for pager delivery. After billing verification and determination of a least cost route, the message is assigned to one or more outbound resources 31 for

delivery to the intended recipient by a method or methods selected by the customer as previously recorded in database 27.

In the case of faxes, the outbound resource is a server which dials the destination fax number and sends the fax.

In the case of voice messages, the outbound resource is a server which dials the destination telephone number and plays the voice message.

In the case of notification messages, the outbound resource is a server which dials out to the paging terminal or delivers the notification message through any appropriate paging gateway.

After the message (in whatever form) has been delivered, a receipt with details and an error log (if any) is sent back via a secure protocol to the message queue 21.

The receipt/error log messages are then processed by the router/filter which interfaces with a billing system (not shown) for customer account update.

FIG. 3 is a block diagram showing the data/control flow through message queue 21, router/filter 23 and database 27 using information contained in the following tables as explained with reference to FIGS. 4a and 4b.

TABLE 1

Message Queue Table	
MESSAGE_ID	This is a unique number assigned to each message that arrives in the system.
RESOURCE_ID	Unique number assigned to each Outbound Resource
RESOURCE_TYPE	Each Resource is identified by the type of messages it can deliver (e.g., FAX, VOICE, NOTIFY, etc.)
RESOURCE_ADDRESS	Location of the Resource (such as IP address)
MESSAGE_TO_EMAIL_ADDRESS	To: address of the message
MESSAGE_FROM_EMAIL_ADDRESS	From: address of the message
MESSAGE_LOCATION	Location of actual message on the Message Queue 21
MESSAGE_SIZE	Size of the message in bytes
MESSAGE_PRIORITY	Priority of the message (e.g., low, medium, high)
MESSAGE_CREATION_DATE	Timestamp identifying the date/time that the message was received by the system
MESSAGE_EXPIRY_DURATION	Amount of time after which the message becomes stale
MESSAGE_SCHEDULED_DATE	Scheduled delivery timestamp for the message
MESSAGE_STATUS	Current status of the message (Active, Pending, Sent, etc.)
MESSAGE_ESTIMATED_COST	Estimated cost for the delivery of the message
CUSTOMER_KEY	Unique number identifying the customer in the database
MESSAGE_PART_OF_BROADCAST	Flag identifying if the message is part of a larger broadcast list waiting to be delivered
BROADCAST_ID	Unique number identifying a broadcast list
COVERPAGE_ID	Unique number identifying a coverpage (if any) for a fax
MESSAGE_SUBJECT	Subject line of the message to be delivered
MESSAGE_DURATION	Duration of the message (delivery time of fax, or delivery time for a voice message, etc.)
MESSAGE_RATE	Rate for message delivery (dollars per second, etc.)
MESSAGE_SEND_DATE	Actual timestamp identifying when the message was delivered
MESSAGE_REMOTE_CSID	Identifier of the fax machine to which a FAX message was delivered
MESSAGE_TYPE	Type of message (e.g., FAX, VOICE, NOTIFICATION, etc.)
RESOURCE_COMMUNICATION_TYPE	Protocol used to communicate with the resource (HTTP, SHTTP, etc.)
MESSAGE_LANGUAGE_CODE	Language used for delivery of a receipt or response, based on settings in the customer table
MESSAGE_PAGES	Number of pages of a message (used primarily for a fax)

TABLE 2

File Type Table	
FILETYPE_MESSAGE_TYPE	Identifier of a message type (FAX, VOICE, etc.)
FILETYPE_RESOURCE_TYPE	Identifier to determine a resource that can handle a particular file type
FILETYPE_EXTENSION	The filename extension that identifies a file type (e.g., WAV, TIF, JFX, AU, GSM, etc.)

TABLE 3

Customer Table	
CUSTOMER_KEY	Unique number identifying a customer in the database
FIRSTNAME	First name of customer
LASTNAME	Last name of customer
COMPANY	Company name of customer
ADDRESSLINE1	Company address
ADDRESSLINE2	Company address
CITY	Company city
MAILREGION	Company state or equivalent
MAILCODE	Zipcode or equivalent
COUNTRY	Company country
WORKNUMBER	Customer work phone number
HOMENUMBER	Customer home phone number
EMAILADDRESS	Email address of customer
COLLECTIONMETHOD	Collection method such as Credit card, Debit, etc.
BILLTYPE	e.g., Customer, Demo, free, corporate, etc.

TABLE 5

Notification Table	
CUSTOMERKEY	Unique number identifying a customer in the database
PAGERTYPECODE	Code to determine the kind of pager service based on the pager type
BBSNUMBER	Modem number for pager notification delivery, based on the pager type
PAGERNUMBER	Identifier number of the pager unit
PIN	PIN code for the pager unit
DISPLAYTYPE	Display type of the pager (numeric, alphanumeric, etc.)

TABLE 6

Response_email Table	
RESPONSE_ID	Unique ID for a response/receipt message to be sent to a customer
RESPONSE_SUBJECT	Subject line of the response message
RESPONSE_FROM_EMAIL	From: line of the response message
RESPONSE_BODY	Actual text of the response message

TABLE 7

Resource Table	
RESOURCE_ID	Unique identifier for the resource
RESOURCE_TYPE	Type of resource (FAX, VOICE, etc.)
RESOURCE_STATUS	Status of resource (Active, Inactive, etc.)
RESOURCE_QUEUE_STATUS	Status of the Queue, number of messages in queue
RESOURCE_TIME_ZONE	Time zone for the resource
RESOURCE_QUEUE_MAX	Maximum size of the resource queue
RESOURCE_ADDRESS	Address of the resource (IP address, etc.)
RESOURCE_NAME	Name of the resource
RESOURCE_EXPIRY_DURATION	Expiry duration for any message sent to the specified resource
RESOURCE_QUEUE_IN_STATUS	Number of messages waiting to be delivered by the resource
RESOURCE_COMMUNICATION_TYPE	Method used to communicate with resource (HTTP, SHITP, etc.)

TABLE 3-continued

Customer Table	
STATUS	Status of customer, Active, Inactive, etc.
LANGUAGECODE	Language of customer, English, German, etc.
CURRENCYCODE	Currency for billing the customer, U.S. Dollars, Pound Sterling, etc.

TABLE 8

Resource Rates Table	
RESOURCE_ID	Unique identifier for the resource
RESOURCE_PREFIX	Any digits to be dialed before an actual number
RESOURCE_CITY_NAME	Name of destination city for the message to be delivered
RESOURCE_PROVIDER_RATE	Rate for a particular city (dollars per second, etc.)
RESOURCE_MAX_DIGITS	Max number of digits allowed to be dialed
RESOURCE_AREA_CODE	Area code for the particular city

TABLE 4

Currency Table	
FORMAT	Currency label
CURRENCY_SYMBOL	Symbol for currency

FIGS. 4a and 4b are a flow diagram of the processing performed by router/filter 23 using Tables 1-8. When a message is received it is placed into message queue 21 which is simply a storage area, the specifics of which,

including the mechanism for placing the message into the queue are well known. Certain details concerning the message are also stored in a message queue table (Table 1). In step 41, router/filter, which is a computer program running on processing server 19, polls the message queue table for pending requests as determined by the existence of an active message in the message status field. If no message is found, after a system defined delay, the message queue table is again polled (step 43). Once a message has been found in the table, processing continues with step 45 by determining the message type using the message_type field in Table 1 and the file type information in Table 2. The customer is then validated using information in Table 3 in step 47. In step 49, currency information for the customer is obtained from Table 4. The message is then filtered for possible pager notification using the information in Table 5 in step 51. In step 53, Table 7 is used to check for available resources to deliver the message. In step 55, the rates of available resources are checked to determine the least cost resource using Table 8. Then in step 59, the message is delivered using the determined least cost resource. After the message has been delivered, or after an error in the delivery has occurred, in step 59, a response/receipt is composed using Table 6. In step 61, the response or receipt is delivered to the sender. The system then begins the process over again at step 41.

As noted above outbound resource 31 is equivalent to communications server 150 as described in U.S. Pat. No. 6,208,638. The modifications made to outbound resource to enable it to operate in a system having an architecture as described herein are as follows.

These changes will be described with reference to the message structure of received messages.

Message Structure

Each field has a value following an '=' sign and is terminated by a newline character. The exception to this is the "Message" field where a newline immediately follows the '=' sign and the actual message follows on the next line.

The fields of a message are as follows:

Password=
 MessageID=
 MessageStatus=
 MessageSentTimeStamp=
 MessageDuration=
 MessageLength=
 MessageRemoteCSID=
 MessageSourceCSID=
 MessageAttachStatus=
 MessageDestination=
 ResourceID=
 ResourceStatus=
 ResourceLastCommTimeStamp=
 ResourceExpiryDuration=
 ResourceQueueInStatus=
 ResourceQueueOutStatus=
 ResourceChannelMax=
 ResourceChannelStatus=
 MessageBoundary=
 Message=

In the following explanation of the above fields, the text in brackets at the end indicates the entity providing the value for the field in the forward/reverse direction (i.e., from router/filter 23 (RF) to outbound resource 31 (RESOURCE), and from RESOURCE to RF, respectively). "NA" indicates that no value is applicable, and the text "NA" is used to populate the field. "Same" indicates that the same value is used in the reverse direction, i.e., the RESOURCE does not modify the value; it only echoes the value it receives in that field.

Password—There is a fixed password pair for each RESOURCE and RF combination. RESOURCE stores the RF password in a flat text password file in a directory (jfaxom), and RF stores the RESOURCE password in the database. (RF/RESOURCE).

MessageID—Unique ID, per message, generated by RESOURCE. (RESOURCE/Same).

MessageStatus—Code indicating current status of the message. See Status codes below. (RF/RESOURCE)

MessageSentTimeStamp—Time stamp indicating date/time the message was delivered to the final destination by RESOURCE. (NA/RESOURCE)

MessageDuration—Time (in seconds) to transmit message from RESOURCE. (NA/RESOURCE)

MessageLength—Number of pages transmitted by RESOURCE. (NA/RESOURCE)

MessageRemoteCSID—called subscriber identification (CSID) of fax machine to which message was transmitted. (NA/RESOURCE)

MessageSourceCSID—Source CSID. This may be customized per customer. (RF/Same)

MessageAttachStatus—Value of "A" indicates a message is attached for delivery. (RF/RESOURCE)

MessageDestination—Destination phone number. (RF/Same)

ResourceID—Unique ID, per resource, stored in the database. (RF/Same)

ResourceStatus—Code indicating the current status of the resource, i.e., whether it is active or not. RF uses this to determine whether further messages should be sent to RESOURCE for delivery. See Status codes below. (NA/RESOURCE)

ResourceLastCommTimeStamp—Date/time of last communication between RF and RESOURCE. (RF/RESOURCE)

ResourceExpiryDuration—Life of message (in minutes) on RESOURCE. If a message has not been delivered to the final destination by RESOURCE within this amount of time, the message is considered "expired" and is discarded.

ResourceQueueInStatus—Number of messages waiting to be processed in an Inbox directory on RESOURCE. (NA/RESOURCE)

ResourceQueueOutStatus—Number of messages waiting to be processed in an Outbox directory on RESOURCE. (NA/RESOURCE)

ResourceChannelMax—Number of channels available for use on RESOURCE. (NA/RESOURCE)

ResourceChannelStatus—Channel activity status, e.g., 0000000111000001, where 0's indicate an idle channel and 1's indicate a busy channel. (NA/RESOURCE)

MessageBoundary—Text for MIME boundary. (RF/NA)

Message—Actual MIME message sent by RF. If MessageAttachStatus=NA, no message follows this tag. All fields are NA if not used.

Date fields are expressed in MMDDYYhhmmss format.

Resource Status Codes are:

A—Active

I—Inactive

Message Status Codes are:

P—Pending

H—On Hold

D—Deferred

R—Ready for sending to RESOURCE

X—Exchanged, i.e., sent to RESOURCE but not acknowledged by it.

A—Sent to RESOURCE and acknowledged by it.

S—Sent (i.e., receipt for final delivery received from RESOURCE)

Normal sequence for Message delivery by RESOURCE is:

RF receives a request in its queue (message queue 21).

RF sends the message to RESOURCE.

RESOURCE gets message, authenticates password, and creates a new message in the Inbox directory.

RESOURCE acknowledges receipt of message.

RESOURCE processes the message in Inbox (MessageStatus=A, MessageAttachStatus=A).

RESOURCE moves message to a Process directory for further processing.

RESOURCE finishes processing message and delivers it to final destination.

RESOURCE removes the message from the Process directory.

RESOURCE creates a message in Outbox directory. (MessageStatus=S). If a “reply message” is to be delivered to the original sender, MessageAttachStatus=A, else MessageAttachStatus=NA. MessageID remains the same in either case.

RESOURCE delivers receipt (with “reply message,” if applicable) to RF.

RF receives the message and puts it in the Queue for database processing.

Processing server 19 with the above described functionality may be implemented using readily available systems such as a Windows NT server or a UNIX server. Database 27 may be implemented as a database server using readily available systems such as a Windows NT server or a UNIX server running, for example a SQL database.

What follows is a detailed description of FIGS. 5–7 which set forth a method and apparatus for allowing the receipt and transmission of audio and fax information between a circuit switched network and a packet switched network, as described in U.S. Pat. No. 6,208,638. For purposes of explanation, specific embodiments are set forth to provide a thorough understanding of the present invention. However, it will be understood by one skilled in the art, from reading this disclosure, that the invention may be practiced without these details. Further, although the system is described through the use of circuit switched and packet switched networks, most, if not all, aspects apply to all networks in general.

FIG. 5 contains a block diagram illustrating an embodiment of a system containing a communications server 550 connected to a circuit switched network 530 and a wide area network (WAN) 580. In an embodiment, the circuit switched network 530 is a circuit switched network such as the PSTN

while WAN 580 is a packet switched network such as the Internet. It is to be noted that circuit switched network 530 can also be a network such as the generalized switched telephone network (GSTN), which encompasses PSTN networks, cellular telephone networks, and the other networks with which they are in communication.

Communications server 550 is connected to circuit switched network 530 via a switch 540 and to WAN 580 through the use of a router 585. As described in further detail below, in an embodiment, switch 540 and router 585 are interfaced to communications server 550 using two separate hardware interfaces. In an alternate embodiment, switch 540 and router 585 can be interfaced to communications server 550 through the use of one hardware unit.

Connected to circuit switched network 530 is both a telephone unit 510 and a facsimile unit 520. Telephone unit 510 is a standard telephone capable of converting audio signals into electrical signals suitable for transmission over circuit switched network 530. Similarly, facsimile unit 520 is a standard facsimile machine capable of transmitting and receiving facsimile messages over circuit switched network 530. Each of these devices can be connected to circuit switched network 530 using either wired or wireless technology.

Connected to WAN 580 is a database server 595, a system management unit 597, a mail server 560, and a client 590. Each of these systems communicate with each other and with communications server 550 via WAN 580 using such protocols such as simple network management protocol (SNMP) and hyper-text transport protocol (HTTP)—packetized using a protocol such as the transmission control protocol/internet protocol (TCP/IP).

In an embodiment, each one of database server 595, system management unit 597, mail server 560, and client 590, are stand-alone computers or workstations containing the hardware and software resources to enable operation. In alternate embodiments, the functions provided by each one of database server 595, system management unit 597, mail server 560, and client 590, are provided by any number of computer systems.

In an embodiment, mail server 560 is a server providing e-mail receipt and transmission using a protocol such as the simple mail transfer protocol (SMTP) and post office protocol (POP). Moreover, client 590 is configured to be able to communicate over WAN 580 using SMTP or POP in order to retrieve e-mail from mail server 560 or another suitably configured server.

System management unit 597 communicates with communications server 550 to monitor: (1) the processes on communications server 550; (2) the status of the trunk line connected to communications server 550; and (3) the connection between the various servers connected to WAN 580. As described below, if any processes on communications server 550 or connection to the circuit switched network 530 is interrupted, system management unit 597 can allocate resources, or cause the re-routing of a call or message via one or more redundant resources or connections, ensuring that the call or message is routed to the final destination.

Communications server 550 contains user data needed to receive and route incoming messages received from circuit switched network 530. The same information is also stored

on database server **595**. In an embodiment, communications server **550** stores an inbound address, a set of final destination addresses; and an account status for each user. The inbound address corresponds to the telephone number assigned to the user. As further discussed below, the inbound address is the number that a message sender dials on telephone unit **510** or facsimile unit **520** to leave a message for the user. The set of final destination address contain one or more e-mail addresses where the user account status information indicates whether the inbound address is either active and or inactive—i.e., whether the user is able to receive messages using the system.

Database server **595** stores a duplicate copy of the inbound address, the set of final destination addresses; and the account status for each user. Database server **595** also stores additional information for each user such as mailing address and billing information which are not used in the operation of the present invention but are note herein for completeness only. Thus, the information that is stored on communications server **550** is a subset of the information that is stored on database server **595**, and if communications server **550** were to become inoperable or otherwise unable to handle incoming messages, database server **595** can configure another communications server to accept those calls.

In an embodiment, system management unit **597** is responsible for monitoring the status of communications server **550** and re-assigning the users being handled by communications server **550** if communications server malfunctions or becomes overloaded with incoming calls. In the former case, system management unit **597** would re-assign all users being handled by communications server **550** to another communications server. In the latter case, system management unit **597** would only off-load the only those incoming calls for which communications server **550** does not have the available resources to process.

FIG. **6** is a block diagram of communications server **550** configured in accordance with an embodiment containing a processor **651** coupled to a memory subsystem **653** through the use of a system bus **655**. Also coupled to system bus **655** is a network interface **656**; a trunk interface **652**; and a set of fax/voice processing resources **654**. Set of fax/voice processing resources **654** and trunk interface **652** are also coupled to a bus **657**.

Bus **657** is a bus that supports time division multiplex access (TDMA) protocols to optimize the flow of real time traffic between set of fax/voice processing resources **654** and trunk interface **652**.

Memory subsystem **653** is used to store information and programs needed by communications server **550**. The functioning of memory subsystems in computer design are well known to those of ordinary skill in the art and thus will not be further discussed herein.

In an embodiment, trunk interface **652** is a trunk line interface, such as a T-1 or E-1 line, to switch **540** and can handle up to **24** channels of communications. Trunk line signaling is well known to those of ordinary skill in the art of telecommunication and thus will not be further discussed herein except as necessary for describing the invention.

Set of fax/voice processing resources **654** are made up of multiple fax/voice processing cards. Each of these process-

ing cards contain processing units which are capable of receiving and transmitting facsimiles according to established protocols, and which are capable of digitizing voice or other audio data, also according to established protocols. In an embodiment, there are three fax/voice processing cards in set of fax/voice processing resources **654**, each fax/voice processing card containing eight processing units capable of handling a channel from trunk interface **652**. Thus, communications server **550** can communicate on twenty-four channels concurrently.

The storage of destination addresses on both circuit switched network **530** and WAN **580** is controlled by a database located either on communications server **550** or on database server **595**. Keeping this information separate from communications server **550** allows communications server **550** to be a resource that can be allocated on demand. Hence, a number of communications servers could be used, along with one or more database servers, to allow a fully redundant and scalable system. In addition, system management unit **597** monitors the status and connection of all the communication and database servers.

FIG. **7** is a flow diagram illustrating the operations of an embodiment of the present invention when a call originating from a source on the circuit switched network **530**. For example, either telephone unit **510** or facsimile unit **520** can initiate the call.

In block **700**, an incoming call signal is received by communications server **550** from switch **540**. The incoming call signal is initiated by telephone unit **510** or facsimile unit **520** over circuit switched network **530** and is routed to communications server **550** via switch **540**. Communications server **550** detects the incoming call signal using trunk interface **652**. Operation would continue with block **702**.

Continuing with block **702**, trunk line interface unit **652**, in addition to receiving signals to indicate that there is an incoming call from switch **540**, also receives signals indicating the circuit destination address of the incoming call. The destination address is captured by trunk interface **652** and is determined by trunk line signaling using mechanisms such as direct-inward-dial, or dual tone multifrequency (DTMF) tones.

Continuing with block **704**, to determine whether or not to process the incoming call, processor **651** searches the list of inbound addresses contained in memory subsystem **653** for the destination address. If processor **651** finds the destination address in the inbound address list, processor **651** will then look up the account status for the user who owns the inbound address to determine if the account of that user is a valid user account. In an alternate embodiment, the validation is performed through the use of a database maintained by a separate entity such as database server **595**. If the account is found to be inactive, communications server **651** will play a prepared message indicating that the number to which the incoming message was sent is an invalid account.

In block **706**, once the validity of the user account has been established, processor **651** will attempt to allocate one fax/voice processing resource from set of fax/voice processing resources **654** and also determine the availability of other resources required for the receipt and processing of the incoming call. These other resources include the processing

capacity of processor **651**, the storage capacity of memory subsystem **653**.

If it is determined that the appropriate resources are not available, then the call will be routed to a different communications server that is capable of allocating the necessary resources. The routing of calls is accomplished by trunk line signaling via switch **540** and is managed by system management unit **597**.

Also, it should be noted that the call will only come from switch **540** to communications server **550** if there are no problems with the line. Otherwise the call will get routed to a different communications server. In an embodiment, fault detection and correction happens in one of two ways. First, on the telephone network side, switch **540** can be set up to independently route a call to another line if it is determined that one of the lines is bad. Second, if communications server **550** detects that the trunk line coming into trunk interface **652** is down, communications server **550** will notify system management unit **597** to reallocate the users for whom communications server **550** is responsible onto another communications server. Thus, system management unit **597** will transfer the duplicate user information contained in database server **595** into a different communications server.

In block **708**, communications server **550** "answers" the incoming call by having trunk interface **652** go "off-hook" on the trunk line.

In block **710**, if the fax/voice processing resource of set of fax/voice processing resources **654** which is processing the call determines that the incoming call is a fax transmission, then operation will continue with block **712**. Otherwise, operation will continue with block **714**. For example, if the call is a fax, a fax protocol is initiated, and the fax is received by one of the fax/voice processing resources of set of fax/voice processing resources **654**. If the call is a voice call, the voice is recorded by one of the fax/voice processing resources of set of fax/voice processing resources **654**.

In block **712**, the fax/voice processing resource of set of fax/voice processing resources **654** responsible for processing the incoming call will perform the fax transfer and store the incoming message as a temporary file in memory subsystem **653**. In an embodiment, the incoming fax is saved into a file which follows the group **3** facsimile file format. Operation will then continue with block **716**.

In block **714**, where it is determined that the incoming message is an audio message, the fax/voice processing resource of set of fax/voice processing resources **654** allocated to process the call will initiate an audio recording of the incoming voice message. In an embodiment, the audio message is digitized and stored in memory subsystem **653** as a temporary file in a pulse code modulated format. After the incoming call has been digitized and stored, operation will then continue with block **716**.

In block **716**, trunk interface **652** will terminate the call. Operation will then continue with block **718**.

In block **718**, the incoming message, which has been stored as a temporary file in memory subsystem **653**, is processed by processor **651**. In an embodiment, the temporary file is processed according to the type of the incoming call. If the incoming call was a fax transmission, then the temporary file, which has been stored as a group **3** facsimile

file, will be converted into a file which follows the tagged image file format (TIFF), or a format that is suitable for transmission over WAN **580**. Optionally, the temporary fax file can also be compressed at this stage. If the incoming call was an audio message, then the temporary file would be compressed using a compression scheme such as the scheme defined in the global system for mobile-communications (GSM) standard. In alternate operations, compressing and other processing of the incoming message is performed as the same time the incoming message is being received and being placed in memory subsystem **653**.

In block **720**, communications server **550** uses the inbound address to determine the set of final destination addresses, which are destinations on WAN **580** (i.e., the packet switched network), to send the processed incoming message. Communications server **550** then sends an electronic mail (e-mail) with the processed incoming message as an attachment to all the destinations in the set of final destination addresses.

For example, the e-mail containing the attachment is transferred to, and stored in, a server such as mail server **560**. The e-mail is then retrieved by client **590** whenever the user wishes. In an alternate embodiment, client **590** can retrieve the e-mail directly from communications server **550**, without the storing operation of mail server **560**.

While the present invention has been particularly described with reference to the various figures, it should be understood that the figures are for illustration only and should not be taken as limiting the scope of the invention. Many changes and modifications may be made to the invention, by one having ordinary skill in the art, without departing from the spirit and scope of the invention.

What is claimed is:

1. A system for supporting a message delivery service, comprising:

a plurality of processing servers each being coupled to communicate with a plurality of first outbound resources and a database server, over an internal packet-switched data network, the database server containing account information on customers of the message delivery service, each processing server implements a router-filter and a message queue,

the message queue to store request messages that are received from a customer of the message delivery service over an external packet-switched data network, the router-filter to obtain a request message from the queue while polling the queue for pending requests, validate a customer associated with said request message after accessing the account information in the database server, and determine to which of the plurality of first outbound resources to assign said request message,

each of the first resources being capable of converting an input request message into a format capable of being received by a fax machine over a telephone network.

2. The system of claim **1** wherein the internal data network is a private data network.

3. The system of claim **2** wherein the external data network is the Internet.

4. The system of claim **3** wherein the request messages are received from the customers via one of a mail transport protocol server and a hypertext transport protocol server on the Internet.

5. The system of claim 1 wherein the router-filter is to prioritize a plurality of request messages that have been obtained from the queue and that are assigned to an outbound resource.

6. The system of claim 1 wherein the router-filter is to determine which of the plurality of first outbound resources to assign said request message to, based on which resource offers the least cost of delivering said request message.

7. The system of claim 1 wherein the router-filter is to generate an error message that indicates an error in delivering said request message as reported by the outbound resource to which said request message was assigned.

8. The system of claim 1 further comprising:

a plurality of second outbound resources each being capable of converting an input request message into a format capable of being played back to a telephone over a telephone network, wherein the router-filter is to determine to which of the first and second resources said request message is to be assigned, based on a message type of said request matching a capability of one of a first resource and a second resource.

9. The system of claim 1 further comprising:

a plurality of second outbound resources each being capable of converting an input request message into a format capable of being transmitted to a paging terminal over one of (1) a telephone network and (2) a paging gateway over an external packet-switched network, wherein the router-filter is to determine to which of the first and second resources said request message is to be assigned, based on a message type of said request matching a capability of one of a first resource and second resource.

10. An article of manufacture for supporting a message delivery system, comprising:

a machine accessible medium containing data that, when accessed by a machine, cause a plurality of processing servers to communicate with a plurality of first outbound resources and a database server all as part of an internal packet-switched data network, each processing server implements a router-filter and a message queue, the message queue to store request messages that are received from a customer of the message delivery service over an external packet switched data network, the router-filter to obtain a request message from the queue, validate a customer associated with said request message after accessing account information in the database server, and determine which of the plurality of first outbound resources to assign said request message, each of the first resources being capable of converting an input request message into a format capable of being received by a fax machine over a telephone network.

11. The article of manufacture of claim 10 wherein the medium includes further data which, when executed by the machine, cause the internal network to perform as a private data network.

12. The article of manufacture of claim 10 wherein the medium includes further data which allow the request messages to be received from a customer over the Internet.

13. The article of manufacture of claim 12 wherein the medium includes further data which allow the request messages to be received from the customer via one of a mail transport protocol server and a hypertext transport protocol server on the Internet.

14. The article of manufacture of claim 10 wherein the medium includes further data which, when executed by the

machine, cause the router-filter to prioritize a plurality of request messages that have been obtained from the queue and that are assigned to an outbound resource.

15. The article of manufacture of claim 10 wherein the medium includes further data which, when executed by the machine, cause the router-filter to determine which of the plurality of first outbound resources to assign said request message to, based on which resource offers the least cost of delivering said request message.

16. The article of manufacture of claim 10 wherein the medium includes further data which, when executed by the machine, cause the router-filter to generate an error message that indicates an error in delivering said request message as reported by the outbound resource to which said request message was assigned.

17. The article of manufacture of claim 10 wherein the medium includes further data which, when executed by the machine, cause one of the plurality of processing servers to be capable of (1) communicating with a plurality of second outbound resources each being capable of converting an input request message into a format capable of being played back to a telephone over the telephone network and (2) determining which of the first and second outbound resources to assign said request message based on a message type of said request message matching the capability of an outbound resource.

18. The article of manufacture of claim 10, wherein the medium includes further data which, when executed by the machine, cause one of the plurality of processing servers to be capable of (1) communicating with a plurality of second outbound resources each being capable of converting an input request message into a format capable of being transmitted to one of (1) a paging terminal over a telephone network and (2) a paging gateway over an external packet-switched network, and (2) determining which of the first and second outbound resources to assign said request message based on a message type of said request message matching the capability of an outbound resource.

19. A method for supporting a message delivery service, comprising:

communicating with a plurality of first outbound resources and a data base server over an internal packet-switched data network, each of the plurality of first outbound resources being capable of converting a request message into a format capable of being received by a fax machine over a telephone network, the database server containing account information on customers of the message delivery service;

obtaining a request message from a message queue, the queue storing a plurality of request messages that are received from customers of the message delivery service and that were sent from an external packet-switched data network;

validating a customer associated with said obtained request message after accessing the account information in the database server; and

determining to which of the plurality of first outbound resources said obtained request message should be assigned.

20. The method of claim 19 wherein the internal data network is a private data network.

21. The method of claim 19 wherein the external data network is the Internet.

22. The method of claim 21 wherein the request messages are received from the customers via one of a mail transport protocol server and a hypertext transport protocol server on the Internet.

23. The method of claim 19 further comprising:
5 prioritizing the delivery of a plurality of request messages that have been obtained from the queue and that are assigned to an outbound resource.

24. The method of claim 19 further comprising:
10 determining which of the plurality of first outbound resources to assign said obtained request message to, based on which resource offers the least cost of delivering said obtained request message.

25. The method of claim 19 further comprising:
15 generating an error message that indicates an error in delivering said obtained request message as reported by the outbound resource to which said obtained request message was assigned.

26. The method of claim 19 further comprising commu-
20 nicating with a plurality of second outbound resources each being capable of converting a request message into a format

being capable of being played back to a telephone over a telephone network; and

determining to which of the plurality of first and second
outbound resources said obtained message should be
5 assigned, based on a message type of said request
message matching a capability of an outbound
resource.

27. The method of claim 19, further comprising:
10 communicating with a plurality of second outbound
resources each being capable of converting an input
request message into a format capable of being trans-
mitted to one of (1) a paging terminal over a telephone
network and (2) a paging gateway over an external
15 packet-switched network; and

determining to which of the plurality of first and second
outbound resources said obtained message should be
assigned, based on a message type of said request
message matching a capability of an outbound
20 resource.

* * * * *