



US006785021B1

(12) **United States Patent**
Gordon et al.

(10) **Patent No.: US 6,785,021 B1**
(45) **Date of Patent: Aug. 31, 2004**

(54) **FACSIMILE TELECOMMUNICATIONS
SYSTEM AND METHOD**

EP 3230609 2/1984

(List continued on next page.)

(75) Inventors: **Richard J. Gordon**, Los Angeles, CA
(US); **James R. Kennedy**, Tucson, AZ
(US)

OTHER PUBLICATIONS

(73) Assignee: **Audiofax, IP, LLC**, Marietta, GA (US)

Audiofax, Inc.—Audiofax, Inc. Proposal for BellSouth
Advanced Networks—Fax Automated & On-Demand Dis-
tribution Methods—Oct. 6, 1988.

(*) Notice: Subject to any disclaimer, the term of this
patent is extended or adjusted under 35
U.S.C. 154(b) by 0 days.

Audiofax, Inc.—System Specifications for BellSouth
Advanced Networks—Fax Automated & On-Demand Dis-
tribution Methods—Nov. 28, 1988.

(21) Appl. No.: **09/717,996**

(List continued on next page.)

(22) Filed: **Nov. 21, 2000**

Related U.S. Application Data

Primary Examiner—Jerome Grant, II

(74) *Attorney, Agent, or Firm*—Womble, Carlyle,
Sandridge & Rice, PLLC

(63) Continuation of application No. 09/686,306, filed on Oct.
11, 2000, which is a continuation of application No. 08/780,
690, filed on Jan. 8, 1997, now abandoned, which is a
continuation of application No. 08/395,062, filed on Feb. 27,
1995, now abandoned, which is a continuation of application
No. 08/371,842, filed on Jan. 12, 1995, now abandoned,
which is a continuation of application No. 07/955,833, filed
on Oct. 2, 1992, now Pat. No. 5,291,302, which is a
continuation of application No. 07/654,181, filed on Feb. 12,
1991, now abandoned, which is a continuation-in-part of
application No. 07/248,798, filed on Sep. 22, 1988, now Pat.
No. 4,994,926.

(57) ABSTRACT

(51) **Int. Cl.**⁷ **H04N 1/00**
(52) **U.S. Cl.** **358/434; 358/405; 358/407**
(58) **Field of Search** 358/400, 402,
358/401, 407, 404, 403, 434, 435, 436,
442, 440, 438, 439, 405; 379/100.08, 100.09,
100.12, 100.15, 100.16

A system and method for facilitating facsimile transmissions
has one or more store and forward facilities, each associated
with a plurality of subscriber facsimile machines, typically
coupled over the switched telephone network. The store and
forward facilities include a computer for controlling opera-
tions and mass data storage equipment. A subscriber to the
system delivers an outgoing facsimile message to the store
and forward facility with which it is associated, which
records the fax message together with data as to originating
facsimile machine and destination facsimile machine. The
store and forward facility then delivers the facsimile mes-
sage to the intended receiver facsimile machine, either
directly or through another store and forward facility. If
unsuccessful on an initial attempt, the store and forward
facility periodically retries to send the facsimile message.
The system also provides spooling of all facsimile messages
for an intended receiver machine, which are all transmitted
upon making connection with the receiver machine. Sub-
scriber mailboxes are provided as part of the mass storage,
which can be accessed by a subscriber to have his messages
delivered to any facsimile machine he designates. Secure
facsimile transmission is achieved through use of subscriber
PIN numbers. Broadcasting, redirecting messages and cost
accounting can also be achieved by the system and method.

(56) References Cited

U.S. PATENT DOCUMENTS

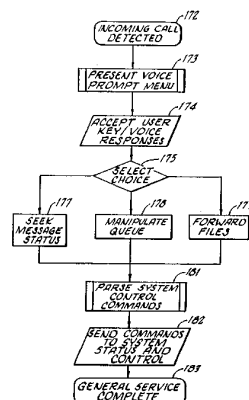
3,594,495 A 7/1971 Bond 178/5
3,641,432 A 2/1972 Bond 325/4

(List continued on next page.)

FOREIGN PATENT DOCUMENTS

CA 1329852 5/1994

119 Claims, 10 Drawing Sheets



US 6,785,021 B1

Page 2

U.S. PATENT DOCUMENTS

3,728,486 A 4/1973 Kramer 179/7.1
3,920,896 A 11/1975 Bishop et al. 178/26
3,993,862 A 11/1976 Karr 178/6
3,995,106 A 11/1976 Wern et al. 178/6.8
4,058,672 A 11/1977 Crager et al. 178/3
4,058,838 A 11/1977 Crager et al. 358/257
4,091,424 A 5/1978 Widergren 358/260
4,106,060 A 8/1978 Chapman, Jr. 358/356
4,115,765 A 9/1978 Hartke 340/324
4,207,598 A 6/1980 Reich et al. 358/257
4,245,257 A 1/1981 Yamazaki et al. 358/260
4,249,216 A 2/1981 Kanda 358/257
4,255,619 A 3/1981 Saito 179/2
4,326,098 A 4/1982 Bouricius et al. 178/22.08
4,327,251 A 4/1982 Fomenko et al. 179/1
4,340,783 A 7/1982 Sugiyama et al. 179/2
4,371,752 A 2/1983 Matthews et al. 179/7.1
4,432,020 A 2/1984 Onose et al. 358/257
4,491,873 A 1/1985 Takayama 358/256
4,500,751 A 2/1985 Darland et al. 179/2
4,504,868 A 3/1985 Hasuike et al. 358/280
4,513,390 A 4/1985 Walter et al. 364/900
4,518,989 A 5/1985 Yahiki et al. 358/86
4,523,055 A 6/1985 Hohl et al. 179/2
4,549,047 A 10/1985 Brian et al. 179/18
4,571,699 A 2/1986 Herzog et al. 364/900
4,573,083 A 2/1986 Shimizu 358/257
4,581,656 A 4/1986 Wada 358/257
4,584,434 A 4/1986 Hashimoto 179/2
4,585,906 A 4/1986 Matthews et al. 179/18
4,587,633 A 5/1986 Wang et al. 364/900
4,602,129 A 7/1986 Matthews et al. 179/18
4,613,907 A 9/1986 Yoshimoto et al. 358/257
4,614,978 A 9/1986 Doster et al. 358/263
4,635,253 A 1/1987 Urui et al. 370/67
4,635,255 A 1/1987 Clark et al. 370/110.1
4,642,697 A 2/1987 Wada 358/257
4,646,160 A 2/1987 Iizuka et al. 358/257
4,652,700 A 3/1987 Matthews et al. 379/89
4,652,933 A 3/1987 Koshiishi 358/256
4,654,718 A 3/1987 Sueyoshi 358/257
4,660,218 A 4/1987 Hashimoto 379/93
4,667,248 A 5/1987 Kanno 358/257
4,706,126 A 11/1987 Kondo 358/257
4,713,837 A 12/1987 Gordon 379/93
4,748,656 A 5/1988 Gibbs et al. 379/93
4,763,317 A 8/1988 Lehman et al. 370/58
4,769,719 A 9/1988 Endo 358/296
4,837,798 A 6/1989 Cohen et al. 379/88
4,847,891 A 7/1989 Kotani 379/88
4,866,758 A 9/1989 Heinzelmann 379/94
4,870,678 A 9/1989 Adachi 379/100
4,893,333 A 1/1990 Baran et al. 379/100
4,905,273 A 2/1990 Gordon et al. 379/93
4,914,586 A 4/1990 Swinehart et al. 364/200
4,918,722 A 4/1990 Duehren et al. 379/100
4,922,518 A 5/1990 Gordon et al. 379/57
4,935,955 A 6/1990 Neudorfer 379/100
4,941,170 A 7/1990 Herbst 379/100
4,942,599 A 7/1990 Gordon et al. 379/93
4,964,154 A 10/1990 Shimotono 379/100
4,967,288 A 10/1990 Mizutori et al. 358/425
4,969,184 A 11/1990 Gordon et al. 379/100
4,974,254 A 11/1990 Perine et al. 379/100
4,994,926 A 2/1991 Gordon et al. 358/400
5,003,575 A 3/1991 Chamberlin et al. 379/89
5,008,926 A 4/1991 Misholi 379/89
5,014,300 A 5/1991 Harvath et al. 379/100
5,065,254 A 11/1991 Hishida 358/400
5,095,445 A 3/1992 Sekiguchi 364/514

5,127,047 A 6/1992 Bell et al. 379/100
5,136,634 A 8/1992 Rae et al. 379/100
5,193,110 A 3/1993 Jones et al. 379/94
5,224,156 A 6/1993 Fuller et al. 379/100
5,291,302 A 3/1994 Gordon et al. 358/400
5,459,584 A 10/1995 Gordon et al. 358/434
6,643,034 B1 11/2003 Gordon et al. 358/434

FOREIGN PATENT DOCUMENTS

EP	0236803	2/1987	
GB	2211698	7/1989	
JP	56-89167	7/1981	
JP	574653	1/1982	
JP	58-133073	2/1982	
JP	5738055	3/1982	
JP	57-119537	7/1982	
JP	57-119541	7/1982	
JP	57-184362	11/1982	
JP	57-192167	11/1982	
JP	58-138148	8/1983	
JP	58-138162	8/1983	
JP	58-175342	10/1983	
JP	58-186253	10/1983	
JP	58-187055	11/1983	
JP	59-015387	1/1984	
JP	5927664	2/1984	
JP	5930352	2/1984	
JP	5999846	6/1984	
JP	59-117845	7/1984	
JP	59-196647	11/1984	
JP	59-196648	11/1984	
JP	59-214365	12/1984	
JP	59-214366	12/1984	
JP	59-231964	12/1984	
JP	6046647	3/1985	
JP	6081963	5/1985	
JP	60-93875	5/1985	
JP	6096945	5/1985	
JP	58-165152	5/1985	
JP	60-119161	6/1985	
JP	60-119164	6/1985	
JP	60-134554	7/1985	
JP	60-178765	9/1985	
JP	60-197059	10/1985	
JP	62-128651	11/1985	
JP	60-248057	12/1985	
JP	6113727	1/1986	
JP	59-133711	1/1986	
JP	6160060	3/1986	
JP	61-128651	6/1986	
JP	63-133753	6/1986	
JP	61-154258	7/1986	
JP	6253545	3/1987	
JP	62-132464	6/1987	
JP	62-135061	6/1987	
JP	62-141847	6/1987	
JP	62-199162	9/1987	
JP	62-204654	9/1987	
JP	6364464	3/1988	
JP	63-052539	* 3/1988 H04L/11/20
JP	63-105544	5/1988	
JP	63-187941	8/1988	
JP	63-221736	9/1988	
JP	63-290041	11/1988	
JP	641364	1/1989	
JP	6412657	1/1989	
JP	1258526	10/1989	
JP	25658	1/1990	
JP	2268535	11/1990	

OTHER PUBLICATIONS

- Comverse Technology, Inc.—Trilogue Message Management System 12/87—pp. 1–5.
- Comverse Technology, Inc.—Trilogue Hardware Architecture—Jan., 1987.
- Comverse Technology, Inc.—Trilogue Message Management Systems—No Date.
- International 100—North American International Business—Jan., 1991.
- Comverse & Ascom Create a Voice & Fax Messaging Strategic Alliance—Brian Willshire, no date.
- ComverseActions—Fourth Quarter 1990—Comverse Technology, Inc.
- Voice Messaging Comes of Age in Today's Mobile Communications Market—Feb. 1988.
- Trilogue Voicelogue User Guide—Comverse Technologies, Inc.—Dec., 1988.
- Interfax's Unique Fax Service—pp. 58–59—May, 1990.
- Information Disclosure Statement Ser. No. 192,839—Oct., 1988.
- We're Making Headlines With the Marriage of The Century—SpectraFax Corp.—No Date.
- The 3M FaxXchange Networks Switch Turns your Fax Network into A Highly Efficient High Volume Communicator—No Date.
- 3M FaxXchange Market & Product Summary Version 1.0—Oct. 12, 1990.
- US Fax—US Faxsys—Your Business—No Date.
- Fax Fever Slams Business Hard—Insight Magazine—Aug. 22, 1988—pp. 8–12.
- The Fax Network (ICM) Product Specification—May 11, 1992.
- AT&T Fax Products & Services Speed The Written Message—04/89—No. 2—pp. 12–17.
- Mitel Enterprises—Providing Business Solutions!—Smart-1 SPC Fax Dialer—11/91.
- SmarterFax Mailbox Manager Brochure—No Date.
- ATR 300 Telephone Line Powered Call Controller—Hy-Tek Controllers, Inc.—1993.
- CCITT Red Book vol. VIII—Fascicle VIII.7—Data Communication Networks Message Handling Systems—Oct., 1984.
- CCITT Red Book vol. II—Fascicle 11.5 Telematic Services: Operations & Quality of Service Oct., 1984.
- Electronic Mail Standards to Get Rubber-Stamped & Go Worldwide—Data Communications May 1984—pp. 159–168.
- Development of a Public Facsimile Communication System Using Storage & Conversion Techniques—Kamae—1990 IEEE—pp. 19.4.1–19.4.5.
- Public Facsimile Communication Network—Takahiko Kamae—1982 IEEE—pp. 47–51.
- Advanced Facsimile Communication Network—Masayoshi Ejiri—pp. 176–183—07/83.
- A Message Handling System For Public Networks—Nakayama et al.—1983—pp. 103–111.
- Facsimile Communication in Digital Network—Ejiri et al.—Jan. 1984—pp. 19–27.
- Enhanced Message Handling System for In-House Use—Haruta et al.—Dec., 1985 pp. 42.4.1–42.4.6.
- Present Situation & Future Trends of Communication Processing Technologies—Hideton Hata—pp. 228–237—Oct., 1986.
- Enhanced Facsimile Communication Network—Hiroshi Katsuki—pp. 30–36—01/86.
- IEEE/IEICE Global Telecommunications Conference 1987—Conference Record Vol. 3 of 3 Nov. 15–18, 1987—Japan.
- International Conference of Communication—Jun. 14–18, 1981—Conference Record vol. 2 of 4—Development of Fax Communication System For Pocket Switched Data Network.
- Experimental Facsimile Communication System on Packet Switched Data Network—IEEE Transactions on Communication—Vol. Com—29 No. 12—Dec. 1981.
- 3.3 International Facsimile Communications Over Packet Switched Network—1983—Hiroichi Teramura—pp. 239–247.
- Recent Advances in Facsimile Communications—Yasuhiro Yamazaki—pp. 118–124 1985.
- Development of A Multi-Media MHS Based on CCITT X.400 Recommendations—pp. 305–319—1986.
- 3.6 Electronic Mail Systems—Ketsuke Tomaru—pp. 283–290—1983.
- A Facsimile Mail System As Basis For Integrated Mail System—Ozawa et al.—May, 1984.
- Planning A Nation-Wide Facsimile Store-And-Forward Network—1981 IEEE—pp. F5.1.1–F5.1.5.
- AutoFax: A Store-And-Forward Facsimile System—vol. 71—Jan. 1979.
- FaxPak Store-And-Forward Facsimile Transmission Service Electrical Communication—vol. 54 No. 3, 1979.
- MCI Safe Store-And-Forward Message-Switching System User's Guide—MCI Communication Corp. 05/87.
- RCA Fax Forward International Facsimile Service Overview—RCA Global Communications, Inc.—Sep., 1987.
- RCA Tries Again With FaxForward—Information Week—Sep. 21, 1987—p. 48.
- Design For Facsimile Storage & Conversion Processing in STOC—201—Electrical Communication Laboratories—vol. 33, No. 1, 1985.
- PBX/LAN The Architecture of Meridian SL Integrated Services Networks—1985 pp. 27–33.
- PBX-Based Lans: Lower Cost Per Terminal Connection Computer Design—02/84 pp. 191–199.
- LAN's—Partners With Voice/Data Systems—Technical Note 09/84—pp. 64g–64p.
- While-You-Wait Fax—Newsweek—John Wojno with Robina Gibb—No Date.
- An Answering Maching That Really Gives Answers—Business Week—Oct. 9, 1989.
- InBound/OutBound—Special Request By SpectraFax—Sep., 1989.
- IDP Report—vol. 10, No. 15—Sep. 15, 1989—Knowledge Industry Publications, Inc.
- Local Entrepreneur's Invention Weds 3 Modern Conveniences—Lorna Collier—No Date.
- Making Databases Available to Computer Illiterates by Jack Lesar—Dec. 13, 1989.
- Just the Fax, Ma'am—Belvidere Native Pioneers Information Service—Belvidere Daily Republican—Dec. 5, 1989.
- For Columnist, Getting Fax Has a New Meaning—Southtown Economist—Dec. 8, 1989.
- Transcript by Paul Ehrlich—Oct. 3, 1989—Video Monitoring Services of America, Inc.
- Facsimile Data Converter Applied to Various Data Communications Services by Masao Setoguchi—Jan. 1987.
- Japan is Making INS A Reality—pp. 64–81—Telephony—Oct. 24, 1983.

- Integrated Digital Switching System with Queuing Storage Facility—1980—IEEE.
- Meridian SL Information Services—Telesis 1985—pp. 13–19.
- Evolution of Integrated Digital Network and Service Integration—09/79 pp. 1.1.4/1–6.
- Electronic Switching Systems—Fujitsu Sci Tech J. 21.3—pp. 225–258—Jul. 1985.
- NETMASTER Functional Specification No.: Fax 002 Version: 2.00—Oct. 16, 1984 pp. 1–123.
- 26 FaxMaster 21 Remote Operation—FaxMaster 21 User Handbook—Sep. 17, 1986.
- NEAX 2400 IMS NEC Facsimile Mail Module General Description—1986.
- NEAX 2400 IMS FMM (Facsimile Mail Module) System Description—01/86—NEC Corp.
- NEAX 2400 IMS FMM (Facsimile Mail Module) Station User's Guide—07/85 NEC Corp.
- ITT Inaugurates FAXPAK—Business Communication Review—Nov./Dec. 1979 pp. 29–31.
- Flexible Facsimile Transmission—ITT Domestic Transmission Systems, Inc. 03/90 pp. 39–42.
- 3 Jeudi 24—09/81—Interconnection of the Teletex & Other Services.
- Internal Memo From Mike Donnenfield—Jun. 9, 1985.
- Fax Management System Description—Jul. 1991—Release 1.5.
- Network Architecture of Advanced Facsimile Intelligent Communication System—pp. 37–51 Watanabe et al.—1981.
- Electrical Communications Laboratories Technical Journal, vol. 34, No. 10, Published Oct. 22, 1985—Enhanced Facsimile Intelligent Communication System (FICS–21) w/translation.
- Electrical Communications Laboratories Technical Journal vol. 33, No. 7, Published Jul. 22, 1984 pp. 3 to 5, and 9 to 11—w/ translation.
- Kobayashi and Kamae, “A new Nation–Wide Network for Public Facsimile Communication” JTR, vol. 20, No. 4, pp. 276–281, 1978.
- Kamae, Endo and Nakabayashi, “Facsimile Intelligent Communication System FICS–1” Review of the Electrical Communication Laboratories—vol. 29, No. 7–8, p. 649–662, 1981.
- Ejiri, “Advanced Facsimile Communication Network”, JTR, vol. 25, No. 3, 1983.
- Allegation of Inequitable Conduct—Sprint Corporation & Sprint Communications Company L.P., Answer, pp. 1–3, Dec. 13, 1999.
- Request for Re–Examination—Arguments of Requestor W.T. Babbitt, dated, Oct. 19, 1999 pp. 1–10.
- Complaint and Demand for Jury Trial and First Amended Complaint & Demand for Jury Trial Audiofax IP, LLC vs. Sprint Corp. et al.
- Sprint Corporation and Sprint Communications Company L.P.'s Answer to First Amended Complaint Counterclaim and Demand for Jury Trial (including allegation of inequitable Conduct).
- Complaint and Demand for Jury Trial—Audiofax IP, LLC vs. *Concord Technologies, Inc.*.
- Concord Technologies, Inc.'s Answer to Complaint, Affirmative Defenses and Counterclaim (including allegation of inequitable conduct).
- Complaint and Demand for Jury Trial—Audiofax IP, LLC vs. *Jfax.Com, Inc.*
- Answer and Counterclaim—Audiofax IP, LLC vs. *Jfax.Com, Inc.*
- CCITT—Red Book—Data Communication Networks Message Handling Systems—Recommendations X.400–X.430—vol. VIII—Fascicle VIII.7—1984–1985.
- Litigation –Supplemental Listing of Pending and Prior Litigation Involving Parent or Related Patents.
- “Audiofax IP LLC v. Delrina Corporation, et al.” Civ. Act. No. 1:95–CV–1052–JTC (N.D. Ga.) Answer of Defendant Delrina to Counts IV (Paragraphs 29–35) and IV (Paragraphs 36–38) of Plaintiff Audiofax, LLC's Complaint.
- “Audiofax IP LLC v. Delrina Corporation, et al.” Civ. Act. No. 1:95–CV–1052–WBH (N.D. Ga.) Judgment and Order (dated Dec. 12, 1995).
- “Audiofax IP LLC v. Boston Technologies, et al.” Civ. Act. No. 1:95–CV–3388–MHS (N.D. Ga.) Complaint and Demand for Jury Trial (dated Dec. 29, 1996).
- “Audiofax IP LLC v. Boston Technologies, et al.” Civ. Act. No. 1:95–CV–3388–MHS (N.D. Ga.) Judgment and Order (dated May 22, 1996).
- “Audiofax IP LLC v. Premiere Technologies, et al.” Civ. Act. No. 1:96–CV–1659–ODE (N.D. Ga.) Answer and Counterclaims (dated Jul. 19, 1996).
- “Audiofax IP LLC v. Premiere Technologies, et al.” Civ. Act. No. 1:96–CV–1659–ODE (N.D. Ga.) Judgment and Order (dated Feb. 11, 1997).
- “Faxsav, Inc. v. Audiofax IP LLC” Civ. Act. No. 97–4393 RWS (D.N.J.) Complaint and Jury Demand (dated Sep. 5, 1997).
- “Faxsav, Inc. v. Audiofax IP LLC” Civ. Act. No. 97–4393 RWS (D.N.J.) FaxSav's Answer and Counterclaims (dated Jun. 1, 1998).
- “Faxsav, Inc. v. Audiofax IP LLC” Civ. Act. No. 97–4393 RWS (D.N.J.) FaxSav's Answer to Counterclaims with Affirmative Defenses (dated Jun. 17, 1998).
- “Audiofax IP LLC v. Faxsav, Inc.” Civ. Act. No. 1:97–CV–2614–RWS (N.D. Ga.) Complaint and Demand for Jury Trial (dated Sep. 8, 1997).
- “Audiofax IP LLC v. Faxsav, Inc.” Civ. Act. No. 1:97–CV–2614–RWS (N.D. Ga.) Answer to Complaint (dated Feb. 17, 1998).
- “Audiofax IP LLC v. Faxsav, Inc.” Civ. Act. No. 1:97–CV–2614–RWS (N.D. Ga.) Judgment and Order (dated Oct. 2, 1998).
- “Audiofax IP LLC v. Cable and Wireless, Inc.” Civ. Act. Nos. 1:98–CV–2712–RWS (N.D. Ga.) Summons and Complaint (dated Sep. 18, 1998).
- “Audiofax IP LLC v. Cable and Wireless, Inc.” Civ. Act. Nos. 1:98–CV–206–RWS (N.D. Ga.) Answer and Counterclaim of Defendants (dated Apr. 5, 1999).
- “Audiofax IP LLC v. Cable and Wireless, Inc.” Civ. Act. Nos. 1:98–CV–2712–RWS and 1:99–CV–206–RWS (N.D. Ga.) Consent Order (dated Jun. 17, 1999).
- “Audiofax IP LLC v. Cable and Wireless, Inc.” Civ. Act. No. 1:99–CV–206–RWS (N.D. Ga.), Judgment and Order (dated Jul. 12, 1999).
- “Audiofax IP LLC v. Sprint” Civ. Act. No. 1:99–CV–2135–RWS (N.D. Ga.), Complaint and Demand for Jury Trial (dated Aug. 20, 1999).
- “Audiofax IP LLC v. Sprint” Civ. Act. No. 1:99–CV–2135–RWS (N.D. Ga.), Judgment and Order (dated Aug. 24, 2001).

“Audiofax IP LLC v. Concord Technologies, Inc.” Civ. Act. No. 1:99-CV-208-RWS (N.D. Ga.), Judgment and Order (dated Apr. 17, 2000).

“Cisco Systems, Inc. v. Audiofax IP LLC” Civ. Act. No. 1:01-CV-4350-JL (N.D. Cal.) Summons and Complaint for Declaratory Judgment of Patent Invalidity and Noninfringement; Unfair Competition Under California Business & Professions Code § 17200 et seq. and Demand for Jury Trial (dated Nov. 20, 2001).

“Audiofax IP LLC v. JFAX.com.”, Civ. Act. No. 1:99-CV-2816-BBM (N.D. Ga.) Judgment and Order (dated Nov. 21, 2001).

“Audiofax IP LLC v. Captaris Inc.”, Civ. Act. No. 1:01-CV-3285-CC (N.D. Ga.) Answer, Affirmative Defenses, and Counterclaim Answers (dated Jan. 17, 2002).

“Audiofax IP LLC v. Captaris Inc.”, Civ. Act. No. 1:01-CV-3285-CC (N.D. Ga.) Judgment and Order (dated Apr. 24, 2002).

“Audiofax IP LLC v. Cisco Systems, Inc.”, Civ. Act. No. 1:01-CV-3369-CC (N.D. Ga.) Complaint and Demand for Jury Trial (dated Dec. 10, 2001).

“Audiofax IP LLC v. Cisco Systems, Inc.”, Civ. Act. No. 1:01-CV-3369-CC (N.D. Ga.) Judgment and Order (dated Jun. 29, 2002).

“Audiofax IP LLC v. Wildfire Communications, Inc., et al.” Civ. Act. No. 1:02-CV-1631-CC (N.D. Ga.) Complaint and Demand for Jury Trial (dated Jun. 19, 2002).

“Audiofax IP LLC v. Wildfire Communications, Inc., et al.” Civ. Act. No. 1:02-CV-1631-CC (N.D. Ga.) Answer and Counterclaim (dated Aug. 12, 2002).

“Audiofax IP LLC v. Wildfire Communications, Inc., et al.” Civ. Act. No. 1:02-CV-1631-CC (N.D. Ga.) Stipulation of Mutual Dismissal Without Prejudice (dated Oct. 21, 2003).

“Audiofax IP LLC v. Avaya” Civ. Act. No. 1:03-CV-3066-CC (N.D. Ga.), First Amended Complaint and Demand for Jury Trial (dated Dec. 23, 2003).

“Audiofax IP LLC v. Avaya” Civ. Act. No. 1:03-CV-3066-CC (N.D. Ga.), Avaya’s Motion to Dismiss Count II of the Complaint.

* cited by examiner-

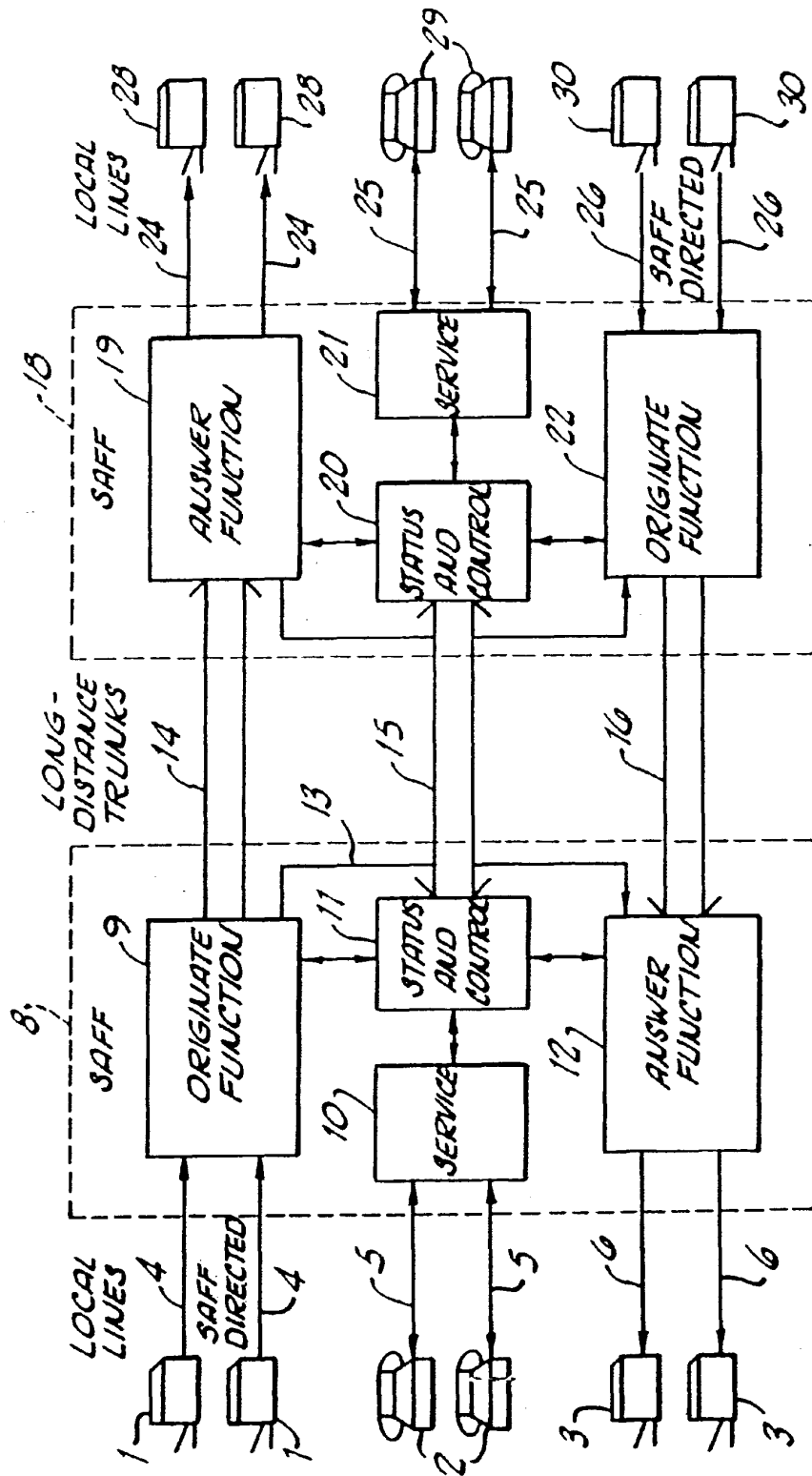
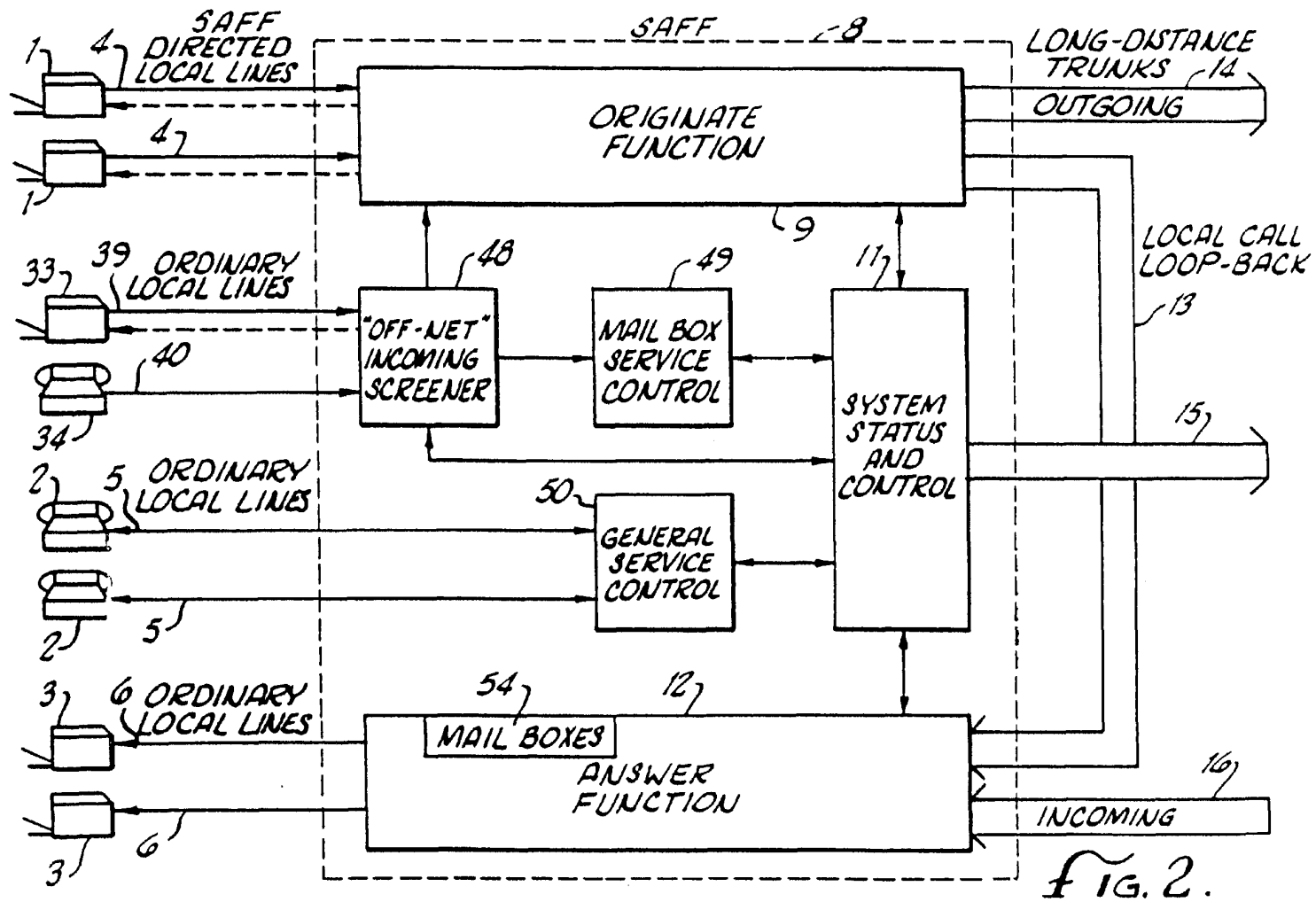


FIG. 1.



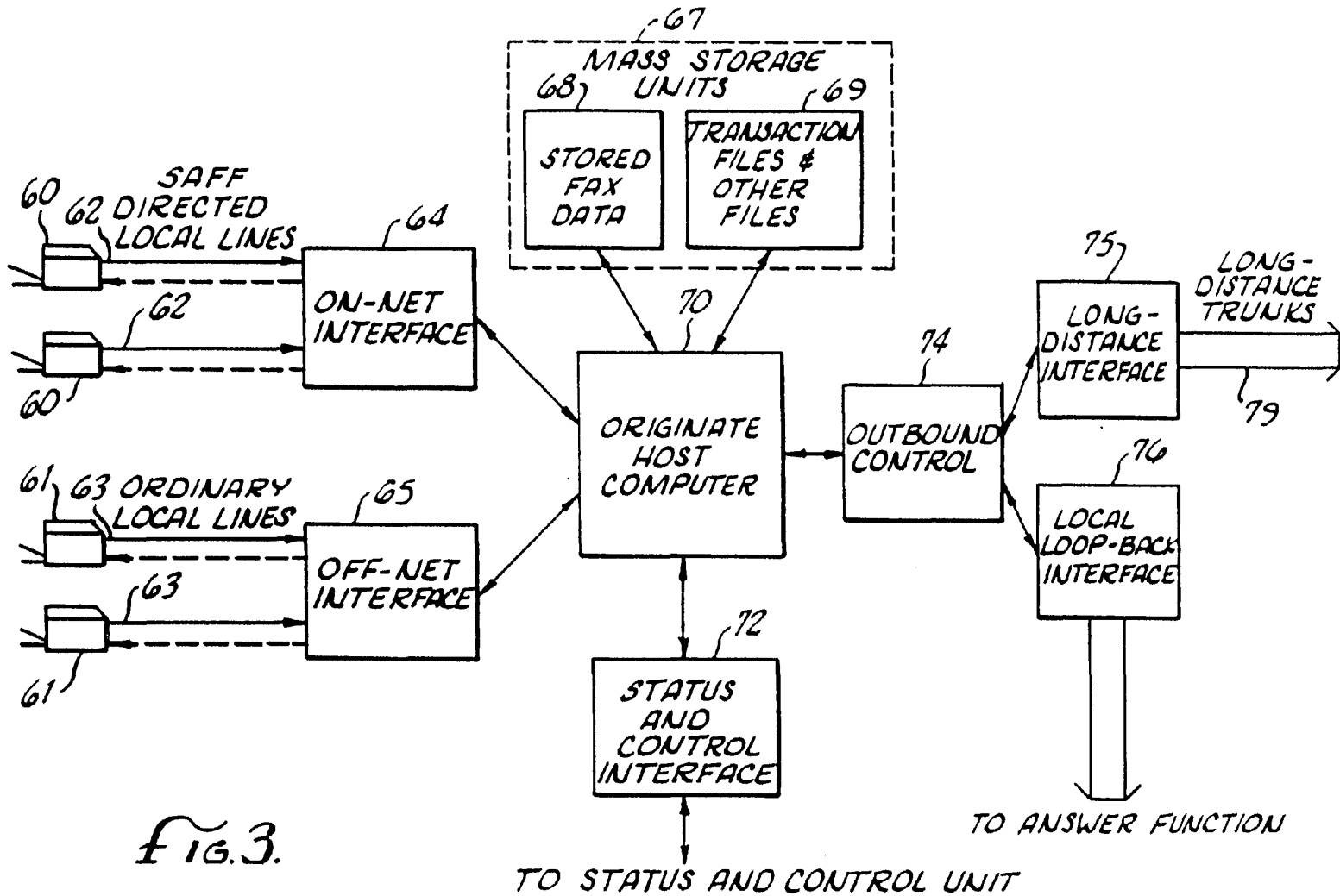


FIG. 3.

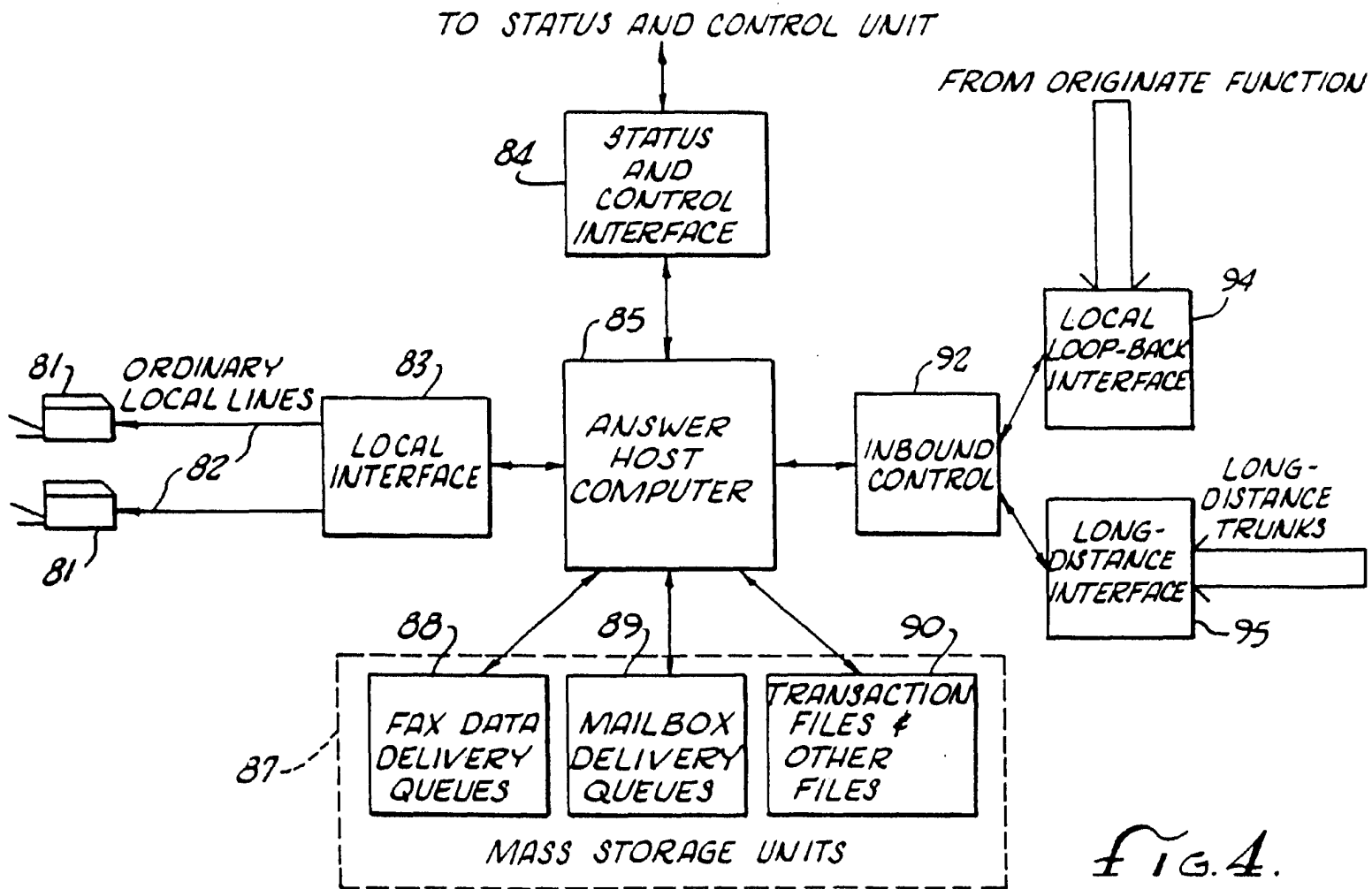


FIG. 4.

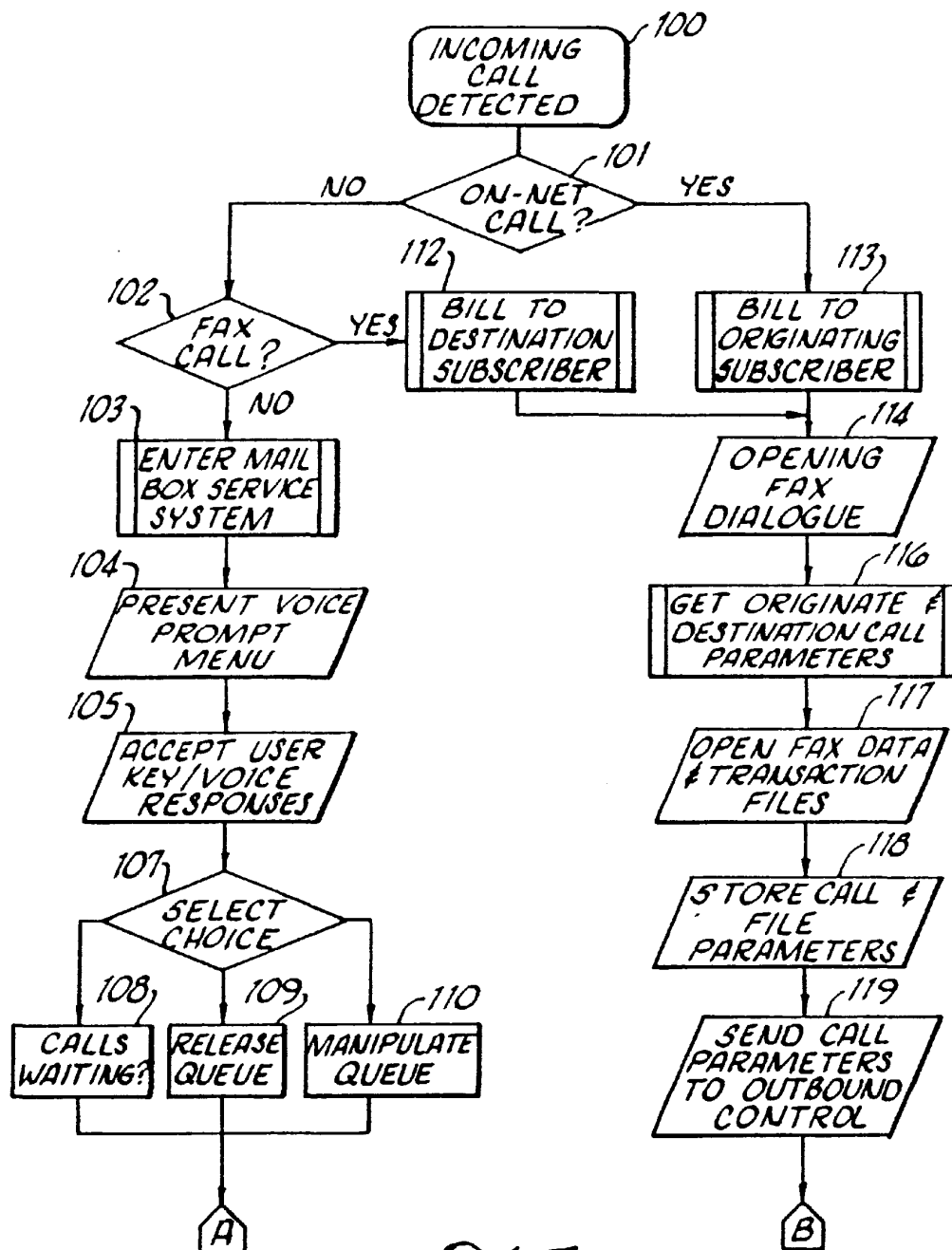


FIG. 5a.

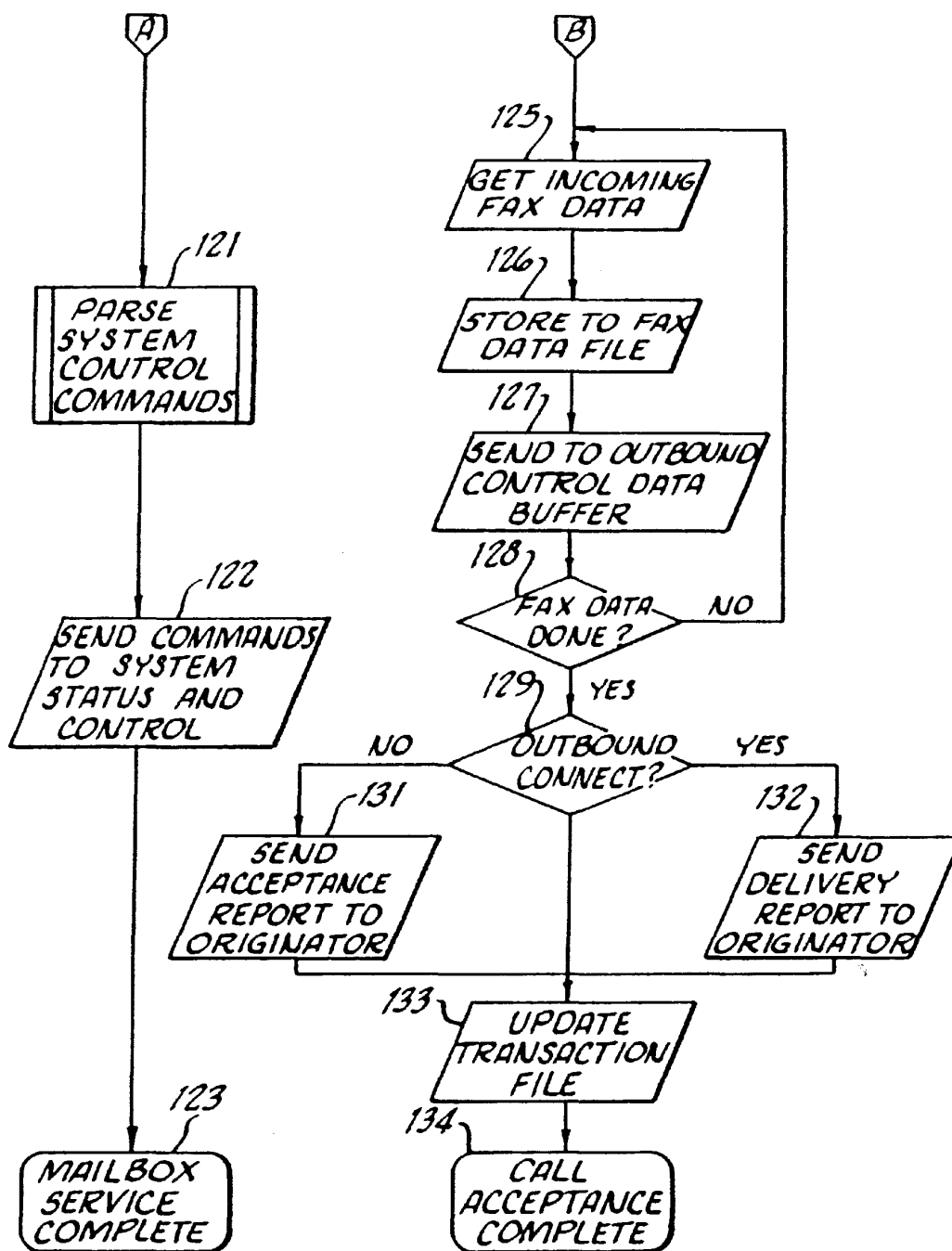


FIG. 5b.

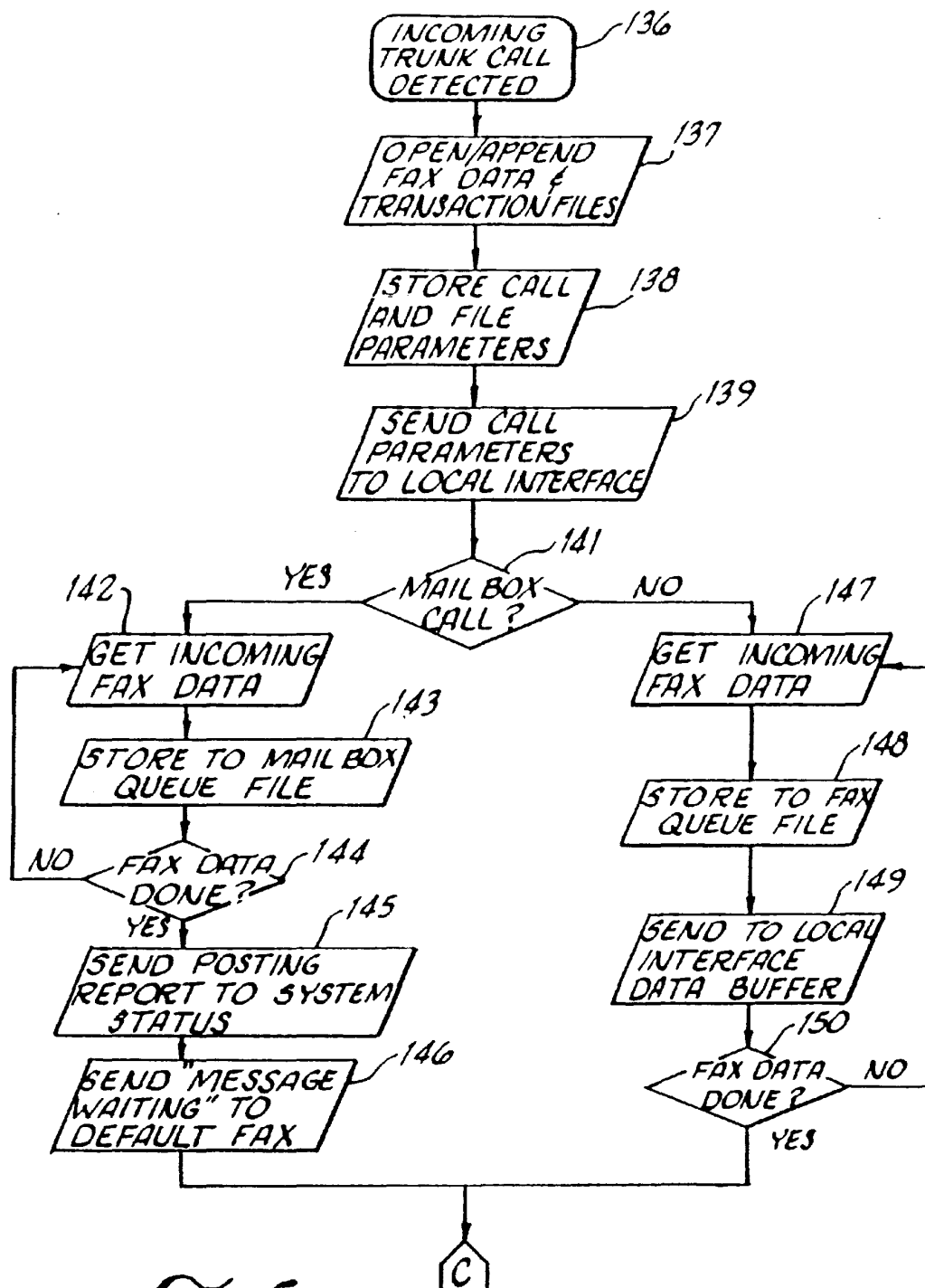


FIG. 6a.

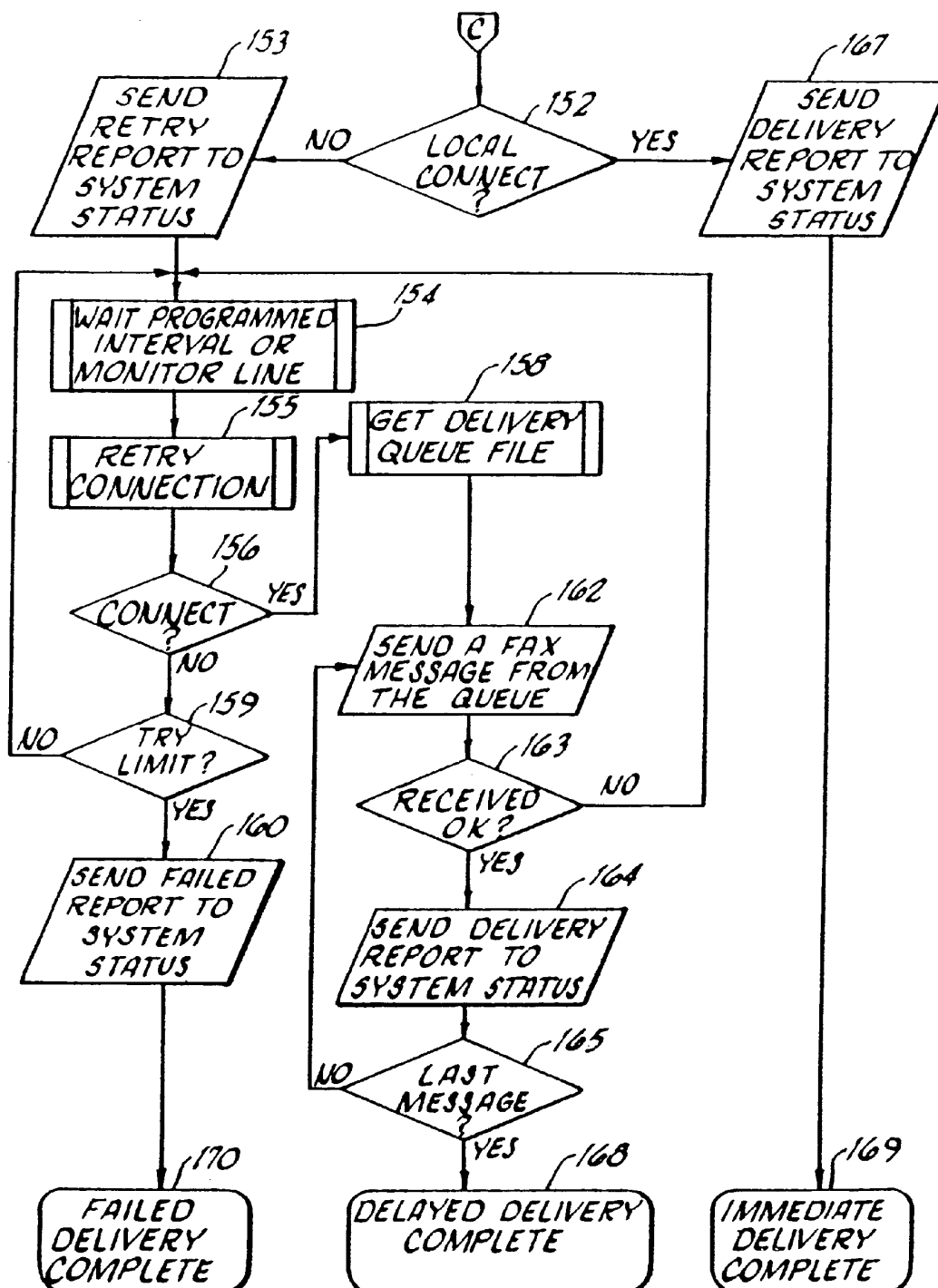


Fig. 6b.

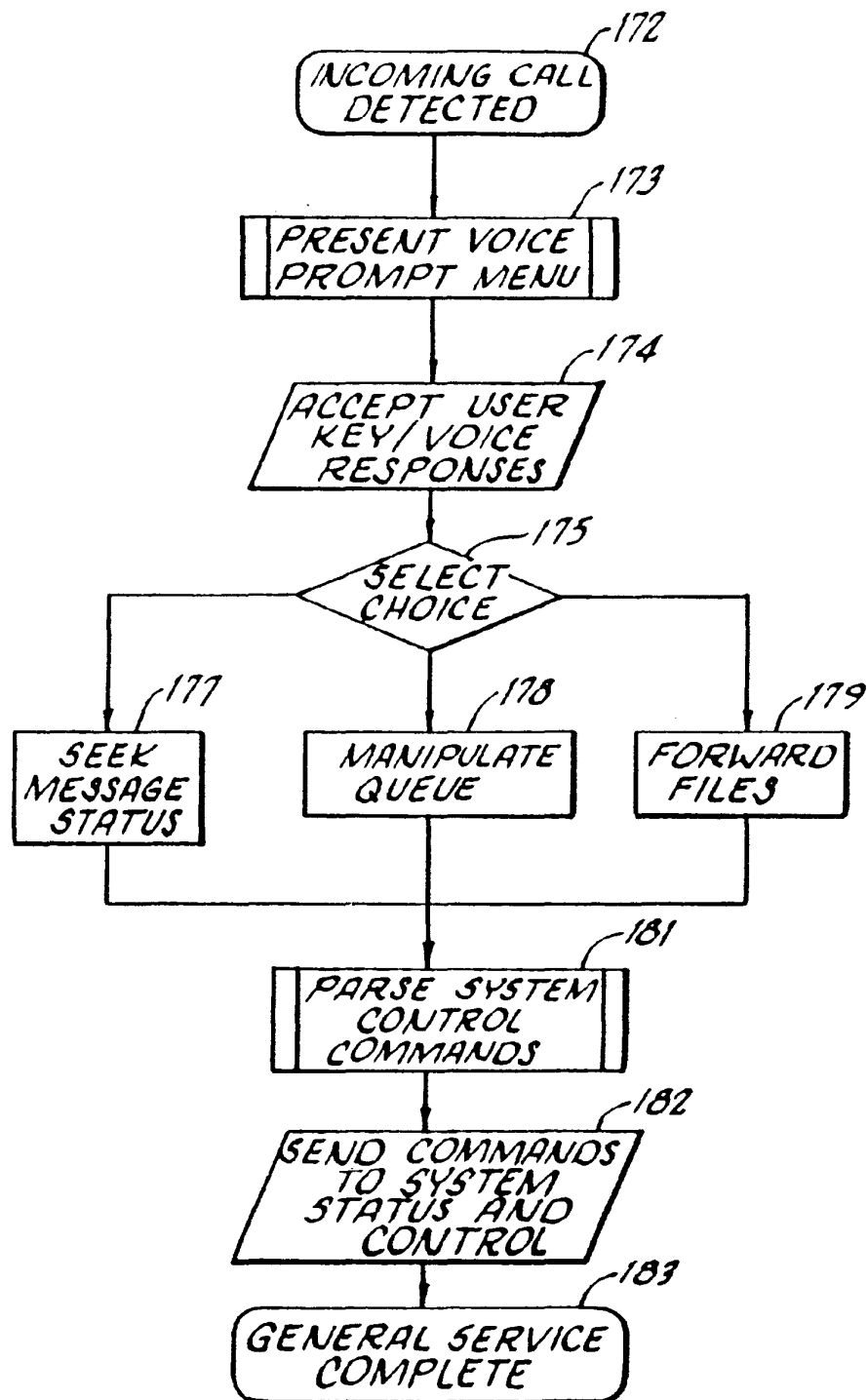
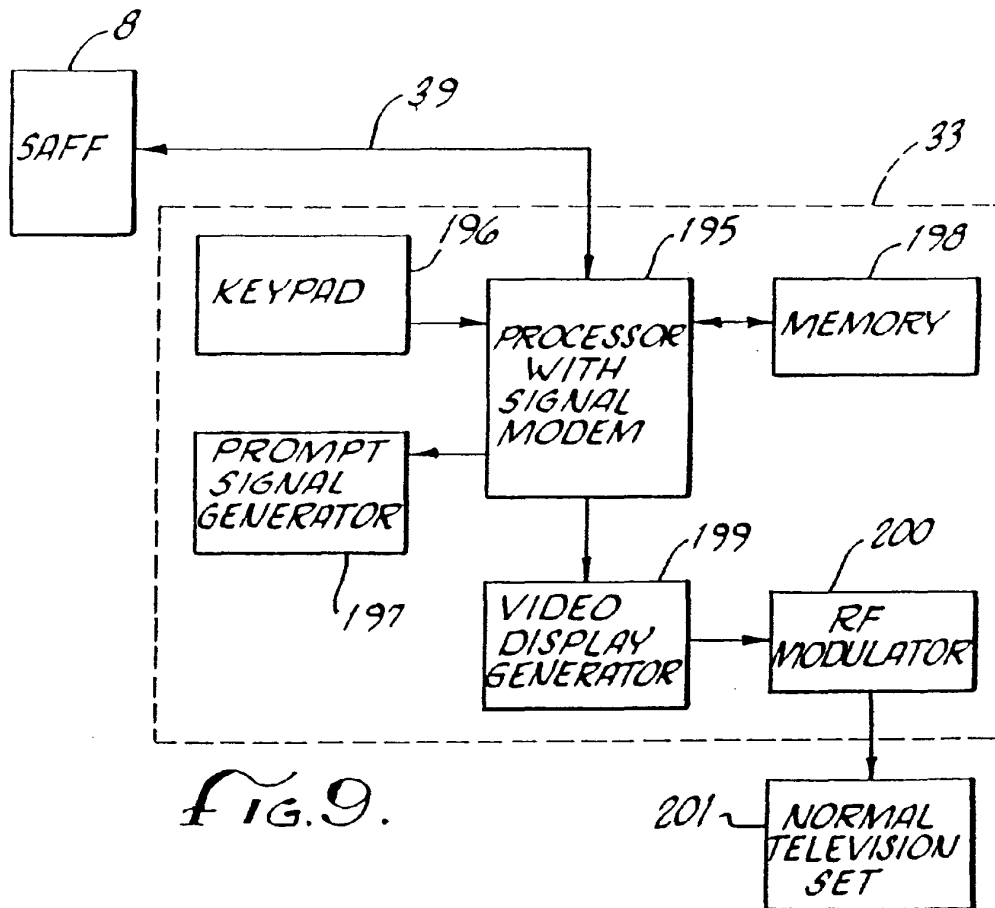
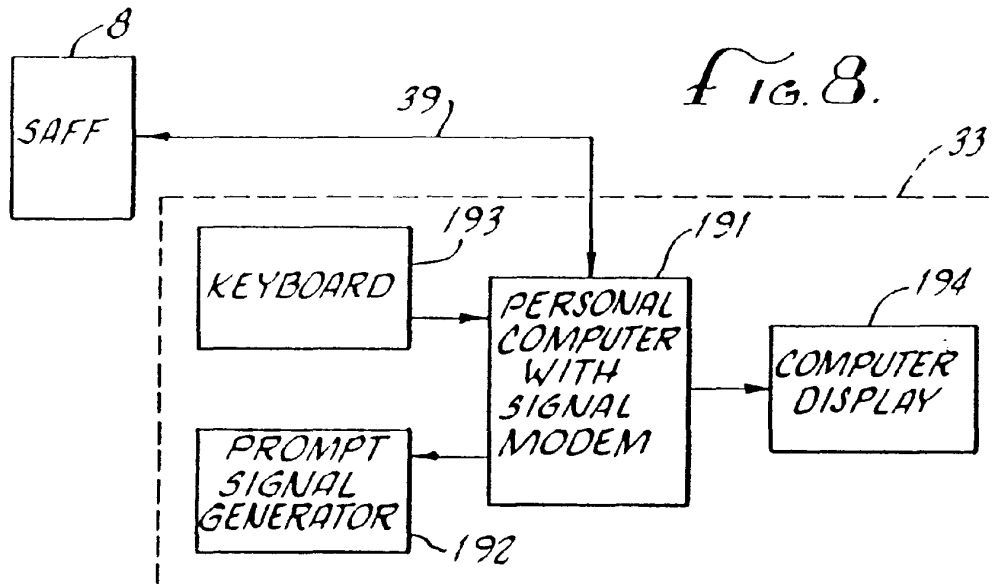


FIG. 7.



1

FACSIMILE TELECOMMUNICATIONS SYSTEM AND METHOD

CROSS REFERENCE TO RELATED APPLICATION

This application is a continuation of Ser. No. 09/686,306, filed Oct. 11, 2000 which is a continuation of application Ser. No. 08/780,690, filed on Jan. 8, 1997, now abandoned which is a continuation of application Ser. No. 08/395,062, filed on Feb. 27, 1995, now abandoned which is a continuation of application Ser. No. 08/371,842, filed on Jan. 12, 1995, now abandoned, which is a continuation of application Ser. No. 07/955,833, filed on Oct. 2, 1992, now U.S. Pat. No. 5,291,302, which is a continuation of application Ser. No. 07/654,181, filed on Feb. 12, 1991, now abandoned, which is a continuation-in-part of application Ser. No. 07/248,798, filed on Sep. 22, 1988, now U.S. Pat. No. 4,994,926.

FIELD OF THE INVENTION

The field of this invention is telecommunications systems used in connection with facsimile transmissions. More specifically, this invention relates to a system and method for enhancing ease of facsimile transmissions and providing features relative to facsimile transmissions not heretofore available.

BACKGROUND OF THE INVENTION

The electronic transmission of documents by way of facsimile (fax) systems employing public and private switched telephone networks has become both commonplace and, often, an essential component in many business activities. In such a setting, it is very common for the fax terminals (fax machines) to be kept quite busy during a major fraction of the business day. Moreover, where sender and recipient are in different time zones, the "business day" can approach 24 hours, particularly in international activities. It is common for fax users to "broadcast" documents to a number of different recipients, that is, send the same message to several different fax machines. It is also true that the contents of some faxed documents are of such a sensitive nature that the originator or addressee would like to have a measure of control over who might see those documents as they move from the receiving machine to the hands of the actual addressee.

These circumstances present a number of practical problems for a fax user. In order to make a successful fax transmission it is necessary that the receiving machine be available at the time that the transmitting machine attempts to contact it. If the receiving machine is already in use handling another message, the transmitter will receive a "busy" signal. The originator's only recourse is to continue initiating telephone calls until contact can be established. This is a "hit or miss" process at best and can be very wasteful of the originating operator's time.

Some, rather expensive, fax machines have digital memories which will allow them to memorize the document to be transmitted and to be programmed to make multiple redials in an effort to establish contact in an automatic way. However, this is limited to only one or two documents and, more importantly, it ties up the transmitting machine until the effort is successful or abandoned. This is hardly an acceptable solution if that machine has other documents to send or receive.

There are other conditions which can result in a failure to transmit even though a telephone connection has been

2

established. Perhaps the most common of these is the absence of paper in the receiving machine. In such situations, repeated attempts to "redial" will lead to repeated toll charges with each attempt, with no actual success until the receiving machine is serviced (which may be some time if the machine is operating unattended because it is night-time half-way around the world).

Busy machines which are destined to receive messages are affected by the converse problem. Since they and the prospective transmitting machines must engage in (perhaps, automated) "telephone tag", they are used very inefficiently. When a transmitting machine gets a busy signal, even if it automatically redials, it can only guess at when the receiving machine will be available. Thus, the receiving machine will likely remain idle for some fraction of the time until such an attempt is made.

The practice of broadcasting documents to a number of addressees obviously compounds these problems and adds still others of its own. Even if one does not encounter busy signals or impaired machines, convenient broadcasting demands an expensive memory-type fax machine on the transmitting end. Such machines read in the document once and then proceed to automatically dial the various recipient machines. This process ties up the sending machine and its telephone line and makes them unavailable for incoming calls. This, of course, exacerbates the busy signal problem for those units trying to contact the sending machine.

The security of sensitive documents is still another problem. Once contact is established between two fax machines, the transmission of the document proceeds automatically, irrespective of who may be standing by the receiving machine at the time. In a busy office, the contents of these documents are accessible to the fax operator and anyone else who happens to be in the vicinity.

It is also common for individuals to wish to deliver fax documents to a recipient who is not currently available through a known machine (e.g. a person on a business trip). This is a very inconvenient situation in that it requires that the paper documents be held until the traveler phones in from a remote machine. It further requires that there be someone available at that time who has knowledge of and access to the documents intended for the recipient.

Another concern is related to so-called paperless fax terminals. In recent years, paperless fax techniques allow a computer or a micro-processor equipped with specific software and modem to directly transmit and receive facsimile messages. However, it is also very common that the recipient is not in his or her office (the paperless fax terminal may also be located at home) at the time when fax message is coming. For example, the recipient is out to lunch or otherwise absent from his or her office or home. This requires the sender to retry the communication message delivery again and again if there is no other fax machine available in the office.

Still another concern is adequate accounting control over the billing of calls. Typically, many businesses wish to be able to track the costs of both fax machine use and the associated telephone charges. While telephone charges can be ascertained from telephone company records, in the present environment these must be related to records of the number of pages transmitted per call and so forth, separately maintained by the fax machine or its attendants.

SUMMARY OF THE INVENTION

The objects of this invention are to address these many shortcomings of present fax systems and to provide an

integrated system for their solution. Furthermore, the intention is to achieve this in a way which is fundamentally compatible with existing fax terminal machines. The basic approach is to provide special computer-based fax Store And Forward Facilities (SAFF's) as an integral part of a switched telephone network system. All fax transmissions entered into the network are routed to such a facility, typically geographically near the originating machine, where they are temporarily stored or "spooled" by the computer in a mass storage buffer, such as a magnetic disk.

The fax message from the originating machine is intended for a destination machine, which may or may not be in a position to immediately answer the call. If the destination machine is within the service region of that SAFF, the system then proceeds to attempt to call the destination fax machine. If the destination machine is within the service area of a different SAFF, the system forwards the fax document data to that facility by long-distance lines, in which case this second facility attempts to call the destination machine. In either case, if contact is established and the message is delivered immediately, the system directs a printed report back to the originating fax machine confirming delivery to the destination machine, and other pertinent data.

If, on the other hand, the delivery cannot be completed immediately due to a busy signal, a machine fault (eg, receiving machine out of paper) or any other reason, the spooled document is saved and the system makes periodic attempts to contact the destination machine and complete the transmission.

In the meantime, the system sends a printed report back to the originating machine acknowledging that the message has been entered into the system, indicating the reason the delivery is being delayed, stating the protocol the system will take to deliver the message, and providing a reference number or "Message Code" which identifies the message and may be used at a later time to trace the status of the document.

Placing the delivering spooling system geographically near the destination machine has the advantage of more economical use of any long-distance lines that may be involved. These lines are used only to move the message from the originator to the spooling system in the vicinity of the destination, which is virtually certain to be successful on the first try. Subsequent attempts to contact the destination machine can be handled more or less locally and need not tie up the bulk of the long-distance facilities.

If the delayed delivery is ultimately successful, the system will send a printed delivery report to the originating machine. On the other hand, if the delivery attempt protocol has gone through its whole cycle without success, a report will be sent to the originator indicating that the delivery procedure has failed and requesting instructions as to how to proceed (eg. try again, redirect the message to an alternate number, or delete the message).

An important feature of the system is that it recognizes all of the documents that are spooled in the system at a given time for a given destination machine. These are identified and linked together to form a message queue for that machine. In this way, once contact is established, all of the waiting messages can be "dumped" to that machine in a continuous batch. Furthermore, if new messages arrive while that dump is occurring, they are simply appended to the end of the active queue and are transmitted when their turn comes. This has the advantage of greatly enhancing the utilization efficiency of a busy destination machine.

Since all outgoing fax documents are temporarily stored at the facility near the originating machine, it is also practical to provide for automatic broadcasting of documents to multiple destinations. Lists of "broadcast groups" of phone numbers can be programmed into the facility by users, or a list of destination phone numbers entered "by hand" at the time of a call. The SAFF can then broadcast the message to every machine of the selected list. This is a great advantage to broadcast users in that they need only tie up their machines for one outgoing transmission, the one to the SAFF. The SAFF copies the message to all of the destination machines as outlined above. In the meantime, the originating machine is available for receiving or transmitting other documents.

Similarly, since the documents are stored near the originator, the system can permit messages which have already been sent to be copied to other destinations after fact, without the necessity of resending the message to the SAFF. Likewise, since the messages are also spooled in a facility near the destination, the system also provides the recipient with the option of forwarding or redirecting documents to still other destinations, as if the recipient were the originator. The system can also accept and store messages destined for a fictitious destination or "Mail Box". Thus, individuals who are traveling can, at their convenience, dial into the system and pick up any waiting documents.

Other services are provided that are particularly useful to individuals who are not at the "home" machines. For example, so-called "paperless" fax terminals, small portable computers equipped with modems and software programs which enable them to emulate fax terminals, are being employed at an increasing rate. The Mail Box system recognizes a variety of these devices and provides interactive features to facilitate their use. In this case, the SAFF can either periodically retry to communicate with the intended paperless fax terminal or transmit the fax message to another paperless fax terminal or fax machine as instructed by the recipient or sender. In addition, the system recognizes a small, highly portable Mail Box Reader that consists of an adapter that can be connected between the user's telephone and a normal television set (for example, in a hotel room), allowing the user to display fax messages received from the Mail Box on the TV screen.

The system is also programmed to provide a fax-to-voice message conversion service which can convert an inbound fax message into a voice mail message and send the message to the intended recipient's voice mail box, such as an answer machine.

Another useful feature is the ability of a fax recipient to send automated-voice replies to fax messages back to the originators (typically directed to a voice mail box). This permits the recipient to select a, generally terse, response from a menu of possible replies. These replies may be selected from a menu of standardized responses provided by the system or from a menu of customized responses, in the user's own voice, that is maintained by the system.

Closely akin to these features is the ability to have the originator of a transmission include the requirement that the recipient provide a security code, such as a PIN number, in order to release the document from the spool to the destination machine. In this case, the SAFF sends a written report to the destination machine advising that a secure message is waiting for a particular recipient and the fax identification of the originating machine. The recipient must then call in to the SAFF and key in the security code to initiate the delivery of the document. Since the document is spooled, the delivery

easily may be delayed until the recipient is available to supply the code.

Finally, since the documents and their delivery are both under the control of the telephone system, as a special service the telephone call accounting system can provide both time and charges for the telephone services rendered and fax information, such as pages transmitted, sorted according to the originator's clients. This can greatly facilitate the fax user who wishes to do cost accounting or to bill clients for costs incurred.

BRIEF DESCRIPTION OF THE DRAWINGS

Other objects and advantages of the present invention will be apparent from the following Detailed Description of the preferred embodiments thereof and from the attached Drawings of which:

FIG. 1 illustrates the inter-relationships of the principal elements of a connection between two SAFFs.

FIG. 2 shows a more detailed view of the various systems within a single SAFF, such as those shown in FIG. 1.

FIG. 3 illustrates the major components of the Originate Function in the SAFFs shown in FIGS. 1 and 2.

FIG. 4 illustrates the major components of the Answer Function in the SAFFs shown in FIGS. 1 and 2.

FIGS. 5a and b show a flow chart describing the general processing steps required to handle a fax or voice message incoming to the Originate Function of a SAFF, as described particularly in FIGS. 2 and 3.

FIGS. 6a and b show a flow chart describing the general processing steps required to handle the delivery of a fax message incoming to the Answer Function of a SAFF, as described particularly in FIGS. 2 and 4.

FIG. 7 shows a flow chart of the general processing steps required to handle a service request in the General Service unit of a SAFF, as described particularly in FIG. 2.

FIG. 8 shows a block diagram of an embodiment of the paperless facsimile terminal.

FIG. 9 shows a block diagram of another embodiment of the paperless facsimile terminal which can utilize an ordinary television set for display of facsimile messages.

DETAILED DESCRIPTION

Introduction

The preferred embodiment of this invention is a multi-function, interactive facsimile transmission system which is integrated into a switched telephone distribution network, where "network" is taken broadly to mean the entire system required to complete a communication from an originator to an answerer. This embodiment provides a comprehensive computerized fax message management system based on automated fax Store And Forward Facilities (SAFF) embedded in the network. This system requires no modifications to existing facsimile machines, but rather, relies on the network to provide the enhanced services.

The system contains several components which actually transmit the fax messages and related information, provide written fax reports to users about the status of messages within the system, allow user intervention in the sequence of automatic actions of the system, provide an accounting of services rendered for both the customer and the telephone company, and control and supervise all of these activities.

In the preferred embodiment, it is presumed that the SAFF's are placed at the interface between the local tele-

phone delivery system and the long-distance delivery system, as indicated in FIGS. 1 and 2. In this setting, the SAFF system can be controlled and its services offered by either one. However, it is obvious that useful systems can be constructed where the SAFF exists as close to the user as a component of his or her own in-house telephone system (such as a PBX or Centrex) or as remotely as a single, independent, stand-alone SAFF serving a wide geographical area. It is also obvious that commercially viable systems can be constructed which provide subsets of the features of the preferred embodiment. The choice of site/control setting and service features might be driven by any number of economic, market, or legal considerations, which would militate toward offering the system at an alternate location in the network, or in a "stripped down" form.

To more clearly understand the present invention, it is useful to consider the manner in which a fax transmission occurs in the traditional setting. Here the communication between two machines is initiated when the destination machine answers a telephone-call directly from the originating machine. Typically, there is an exchange of digital data identifying the sending and receiving machines to each other and establishing the fax mode or format to be used. If this exchange is satisfactory, then the actual image transmission takes place. Otherwise, the call is terminated, usually with some form of written diagnostic to the respective users.

Message Interception

In the present invention, all fax transmissions initiated by a subscriber to the fax management system are first intercepted by an "originator" SAFF; that is, the SAFF which directly services the originating fax machine. FIG. 1 shows two exemplary SAFFs 8 and 18, with interconnections between the SAFFs and with subscriber fax machines being diagrammatically indicated. Thus in FIG. 1, the SAFF 8 includes an originate function 9 coupled over telephone lines 4 to originating fax machines 1. Likewise, the SAFF 18 includes an originate function 22 coupled over telephone lines 26 to originating fax machines 30. Each of the SAFFs 8 and 18 also includes respective answer function blocks 12 and 19 respectively connected over telephone lines 6, 24 to fax machines 3, 28. Each of the SAFFs 8, 18 also includes service interfaces 10, 21 coupled via telephone lines 5, 25 to telephones 2, 29. The function and purpose of the service interfaces is more fully explained hereafter, and they are under control of status and control blocks 11 and 21.

Access to the system of FIG. 1 can be obtained much the same as access to a specific long-distance company's network. That is, subscribers such as 1 in FIG. 1 can dial a unique access code at the time a call is initiated, or a telephone line dedicated to a fax terminal may be permanently routed to the SAFF system, in this case the SAFF 8 of FIG. 1. Either way, one accesses SAFF Directed Lines 4 and the SAFF 8 itself in the process of dialing the destination fax machine.

The SAFF 8 then answers the phone in place of the destination machine, such as one of 28 shown in FIG. 1 as serviced by SAFF 18. For the moment, this SAFF 8 near the originator becomes the proxy for the destination machine 28. While noting the actual destination telephone number, the SAFF 8 engages the originating machine in the same digital dialogue that would have occurred if a direct connection to the destination machine had actually been made. Thus, it echoes back the destination telephone number, to identify the intended destination machine, and agrees to accept the fax format requested by the originating machine.

This causes the originating machine **1** to respond by transmitting the fax document image data. The originating machine's identification, the destination machine's telephone number, the fax format, and the document image data are all stored on a mass storage device **67** (in FIG. 3), such as a computer magnetic disk unit. Furthermore, a unique alphanumeric Message Code is assigned to the block of data to identify it while it is resident in the SAFF system. This Message Code is related to the file name for the stored data.

Delivery

At this point, the SAFF **8** initiates two actions. The first is to generate an "Acceptance Record" of the transaction to this point. This record, in one form or another, will be returned to the originator as will be described below. The second step is to begin to deliver the fax message to the destination machine **28**.

The details of the delivery process depend to some degree on the geographic location of the destination within the network. A single SAFF can, in principle, service a broad geographical area. However, in the preferred embodiment, communications beyond a certain limiting distance involve at least two SAFFs, one **8** near the originator **1** and the other, a "destination SAFF", **18** near the recipient **28** of the document. The choice of one, two, or more SAFFs is determined by network economics, or other considerations, and is not essential to the invention.

For the sake of this discussion, we will define a "local" message to imply that the originating and the destination machines are serviced by the same SAFF. (Although, this does not preclude the possibility that the two machines are some considerable distance apart and connected by a toll call.) On the other hand, we will define a "long-distance" message to mean that the originating and destination fax machines are serviced by different SAFFs and, thus, one SAFF must exchange data with the other, perhaps through intermediaries. Similarly, the term "near" used in connection with a SAFF refers to being within the service area of that SAFF.

Each SAFF **8**, **18** has two clearly defined roles: the "Originate Function" **9**, **22** for handling data with an originating machine, and the "Answer Function" **19**, **12** for handling data with a destination machine. The details of these two subsystems are illustrated in FIGS. 3 and 4 respectively. In the local message mode, the connection between the Originate Function, such as **9**, and the Answer Function, such as **12**, is linked within the single SAFF **8** by way of a Local Call Loop-back connection **13**, between the two Functions. In the long-distance mode, the Originate Function **9** of SAFF **8**, near the originator, is linked to the Answer Function **19** of another SAFF **18**, near the destination, by long-distance lines, such as **14**, or **16** for SAFF **18**. Thus, processing a long-distance message involves the same basic steps as a local message, except that the activity is shared interactively between at least two different SAFFs.

Originate Function

With this understanding of SAFF functions, the following detailed discussion will illustrate the operation of the system in the long-distance case, since it is the more complex, and therefore provides a more comprehensive example. FIGS. 1, 2, 3, and 4 all show elements of the SAFF system in varying degrees of detail and all will be referred to in the following. It will be noted that some critical elements are shown in more than one of the Figures.

As an example, it is assumed that one of the subscribers **1** attached to SAFF **8** wishes to send a fax message to one of the subscribers **28** attached to SAFF **18**. The subscriber **1** places the call to the destination machine **28** which is routed over SAFF Directed Lines **4** to the Originate Function **9** of SAFF **8**. These signals originate within the SAFF system and they are picked up by the On-net Interface **64** which is part of the Originate Function, as shown in FIG. 3. This Interface signals the Originate Host Computer **70** of the incoming call and the Host responds by directing the incoming data to a Mass Storage Unit **67** where it is stored in a file **68**.

During this storage process, the Host directs two other activities. It creates a call status record file **69** (FIG. 3) in mass storage, recording the time and date of the origination, the telephone number of the calling machine, the telephone number of the destination machine, any security or other special services requested, various housekeeping information, and it assigns the Message Code number which locates not only the status file but also the fax data file associated with it. The Host also passes the destination machine's telephone number to the Outbound Control unit **74** which proceeds to connect the originating SAFF **8** with the nearest available SAFF **18** to the destination through a long-distance interface **75** over long-distance circuits **79** (FIG. 1). In the process of establishing this connection, the Outbound Control unit employs an algorithm which examines the number and kind of available trunk resources and chooses the most efficient combination of these lines for the task required.

Answer Function

The originating SAFF **8** then proceeds to transmit the originator and destination telephone numbers, the stored fax image, the Message Code, and other housekeeping data to the destination SAFF **18**. These data are sent by the most expedient mechanism offered by the long-distance service. For example, if this service employs digital communications, the fax data may well be transmitted at a significantly higher rate than it was originally received into the system.

The fax data is received by the Long-distance Interface **95** (FIG. 4) in the Answer Function **19** of the destination SAFF. This unit signals the Answer Host Computer **85** of the incoming data. The Host then routes these data to its Mass Storage facility **87**. (It should be noted for later reference that the originator SAFF and the destination SAFF now both have a copy of these data.) The Host notes whether other messages are pending for the destination machine and either opens a Delivery Queue file **88**, or appends the new message to the existing Queue File.

The Host also records the arrival time and other pertinent information about the fax message in a Call Status file **90** in Mass Storage unit **87**, and sends a status update back to the originating SAFF **8** by way of the Status and Control Interface **84**, and the System Status and Control Unit **11** via Long-distance Trunks **15**.

It then signals the Local Interface **83** to dial the destination machine's (**81** in FIG. 4) telephone number on ordinary outgoing local lines **24**, **82**. If the destination fax's line is available, the destination SAFF now becomes the proxy for the originating fax machine and engages the destination machine in the necessary preliminary digital dialogue.

If this is successful, the document image, including the source and destination identification information, the Message Code, and the entry and delivery times, is played back

from storage and delivered to the destination. A "Delivery Record" is then created by the Answer Host **85** which indicates the date and time of delivery, and any other pertinent data. The Delivery Record is sent back to the originating SAFF **8**, again by way of the Status and Control Interface **84**, and the System Status and Control Unit **11**, via Long-distance Trunks **15**. The originator SAFF **8** then appends this information to the Acceptance Record to form a complete "Transaction File". The originating SAFF **8** then sends this file, as a delivery receipt or report, back to the originating machine **1**, **60**, as a fax document.

If the destination machine's line is busy, or the contact fails for some other reason, the destination SAFF's Host Computer **85** will enter a sequence whereby it will attempt to contact the destination machine and transmit the document on a predetermined schedule for a specific period of time or number of tries. As this sequence is entered, a "Retry Record" is generated documenting the situation and the system's response to it. This record contains the reason that the delivery was delayed and it indicates which protocol the system will use to attempt to deliver the message. This is transmitted back to the originating SAFF **8**, as described above, and appended to the previously described Acceptance Record to form a Transaction File which is then sent as a fax message back to the originator. The assigned Message Code is a part of every transaction report and may be used at any time to trace the status of undelivered documents, as will be described shortly.

If the retry effort is ultimately successful, a Delivery Record is appended to the Transaction File which is sent back to the originating machine. If the effort fails after reaching the predetermined limit, this is also recorded, appended, and sent back to the originator. In this case, the originator is given the option of dialing back into the system within a certain length of time (typically several hours) and instructing the destination SAFF as to how to dispose of the document (eg. repeat retry sequence, forward to a different telephone number, or delete the message).

This process is handled by using an ordinary touchtone phone to dial a multipurpose (perhaps, toll free) fax system "Service Number"; which will be referred to here and in later sections. This might be a unique number for every SAFF, or it might be a standardized number common to many localities, except perhaps for area code, such as is 555-1212 for calling "Information". This Service Number is answered by the General Service Control units (**10** in FIG. **1**, **50** in FIG. **2**) of the SAFF to which the call is directed. This unit contains an automated voice response system that presents a menu of the available services and prompts the user to select the desired choices by pressing particular numbers on the touchtone keypad. In an advanced embodiment, a computer-based voice recognition system replaces the keypad and accepts verbal commands in a conversational way.

The General Service Control unit **50** can communicate with its own System Status and Control unit **11**, and through that unit, any other such unit **11**, **20** via Long-distance Trunks **15**. Through these connections, both inquiries relating to messages in the system and instructions as to their disposition may be addressed to the entire SAFF system.

Having selected the "failed-connection message disposition" choice, the user is prompted to key in the Message Code. The system verbally repeats the code and the delivery discrepancy for verification, and then presents a menu of disposition options for the user to select with the keypad.

If the user does not take advantage of this "what to do now" opportunity within the time limit, the message is

retransmitted back to the originator with a report. It is then erased from both the originator and destination SAFF files after a suitable delay (typically six hours). If the originator wishes to resend the message during this "grace" period, it may be recovered and resent to the original destination or forwarded to another destination(s), as will be described later.

In each of the various cases where the SAFFs automatically direct fax message status reports (such as, the Acceptance, Delivery, or Retry records above), the system can be programmed to accumulate records from all calls over a period of time (eg. an hour) at the originator SAFF and deliver them as a single fax document at the end of the period or upon request by the originator. This has the advantage of reducing the number of report calls and the subsequent burden on the originating fax machine. The originator SAFF will enter a retry sequence if it finds the originator's line busy or the machine unavailable when it attempts to deliver reports. This is a persistent sequence which it will continue trying for direct contact at intervals of an hour or so for a considerable length of time (eg. 72 hours). It also places a copy of the report in the originator's Mail Box (described below) so that the originator may recover it in between SAFF delivery attempts.

It should also be noted that the originator has the option of dialing the Service Number at any time and inquiring about the status of a given message. Here again, the voice response system prompts, presents menus, and uses the Message Code to locate and report on the current location and condition of the message. A written record can be directed to the originating or destination fax machine, if desired.

Another feature of the General Service function (and the Mail Box function described later) is the ability to send an immediate reply to a received fax message. There are many instances where one might wish to provide a personal acknowledgement of receipt and some indication of the future course of action. A collection of such responses is available and may be selected from a menu using the General Service or Mail Box systems. Examples might be: "I received your fax number (Message Code) at (date, time)"; "I am unable to respond at this time"; "I will respond in the next 24 (48, 72) hours"; "I completely agree, proceed as described"; "Take no action until you hear from me", and so forth.

In a typical transaction, the system asks the user for the SAFF-assigned Message Code and then presents a menu of these "canned" responses. It will also permit the concatenation of several such responses to form a more complex message. Once the user has made the appropriate selections, the system will replay an automated voice version of the message and permit editing as required. When the user is satisfied, the reply is then transmitted either as a fax message or as an automated voice message to a designated telephone number. That number may represent an active fax or voice number, or it might represent a fax or voice mail box.

When a voice reply is selected, the user can select the sex of the automated voice, or the user can actually employ a personalized menu of custom responses tailored by the user to his or her own requirements and prepared in the user's own voice.

Still another feature of the General Service function is the ability to provide a fax-to-voice message conversion service. This service allows the SAFF system to receive an inbound fax message and then electronically create a voice mail message directed to the intended recipient voice mail box as

11

instructed by the message sender or the intended recipient. The fax message may be stored in a subscriber's mail box in the system which will be fully discussed later. In order to provide this service, the SAFF is equipped with suitable software and voice print database that will permit the system to electronically interpret the facsimile message from printed documents to verbal text. The voice mail message transferred to the instructed voice mailbox may be the whole text of the facsimile message or only a voice message which will verbally identify the originator of the facsimile message, the reading time and the number of papers. The intended recipient can then commence the electronic translation by touch-tone signal and can control the operation in fast forward or reverse through the document by touch-tone command.

Another feature of the system is that the act of accepting and storing an incoming message at the originator SAFF, and the act of dialing and forwarding that message to the destination by the destination SAFF, can overlap in time. That is, if the originator SAFF has lines available, once the initial connection dialogue between the originator and the SAFF is complete, the SAFF may immediately make its first attempt to contact the destination SAFF and, thus, the destination machine, while it is beginning to spool the document.

If this immediate contact is successful, then the message is passed from the originator SAFF 8 to the destination SAFF 18 to the destination machine 28 directly from the Originate Host Computer's memory 70 while the two SAFFs are still in the process of spooling the document to disk. This is facilitated by a "write-through pipeline" whereby the Originate Host 70 passes the incoming fax data through directly to the Outbound Control unit 74 at the same time it is being written to mass storage. It is held in a temporary memory buffer in the Outbound unit until it is clear whether or not an immediate connection to the destination machine is possible. At that point the temporary buffer fax data is either sent and then deleted, or merely deleted. The net effect is that the spooling process only adds a few seconds delay in the message delivery over the traditional direct machine-to-machine contact when the destination machine is readily available.

On the other hand, if lines are limited, the originating SAFF can choose to delay until suitable lines are available. This has the advantage of improving communications resource management and enhancing the efficiency of the telephone system's line usage over the direct contact scheme.

The foregoing describes the basic fax SAFF message handling system and from this discussion several advantages should be apparent. The originating machine always functions as if it makes contact and delivers documents on the first try, thus immediately freeing the machine and the attendant personnel for sending or receiving other transmissions. Likewise, the telephone system only handles one call across its local and long-distance lines from the originating machine to the destination SAFF, since the state of the destination machine has no impact on the call. This significantly improves the efficiency of line usage when messages are addressed to busy fax terminals.

Although some additional calls are needed to deliver the various reports, these require very little long-distance time, as they are transmitted over the circuits as highly compressed coded messages. It is the nearby originating SAFF that translates them into "plain language" for fax delivery as a local message. As pointed out, additional savings in these

12

local messages can be gained by compiling multiple reports and delivering them in bulk as a single call. It should be noted that the delivery of reports to an originator is a cooperative process between the Originate Function and the Answer Function of the originate SAFF. The Originate Function 9 actually generates these reports and passes them through the Local Call Loop-back 13 (76 in FIG. 3) to the Answer Function 12 for delivery as an ordinary fax message.

In addition to these basic features, the design of the system also provides for a number of additional services and advantages which are described below.

Message Queuing

As pointed out, all fax messages directed to a particular telephone number are spooled by the Answer Function of the destination SAFF, as detailed in FIG. 4. The Host Computer 85 controlling this function monitors the incoming messages and links all undelivered messages for a given telephone number into a message Delivery Queue file 88. The computer also compiles a constantly updated, ordered catalog of the file names of the messages waiting for each fax machine.

Consequently, when messages arrive at a rate faster than they can be delivered, for whatever reason, they are held in this queue for delivery. As soon as the destination SAFF establishes contact with the destination machine, it begins sending the entire queue of messages in a single, essentially uninterrupted transmission. Messages that arrive while the transmission is in progress are appended to the end of the queue.

This scheme eliminates the "trial and error" dial and redial attempts that result from a number of independent incoming calls competing in an uncoordinated way for the single destination line. It can significantly enhance the efficiency of the destination fax machine and the long-distance and local telephone circuits connected to a busy machine.

When the queue exceeds a certain limiting size, the destination SAFF will periodically insert and send a "Queue Report" (as a fax document) to the destination machine showing a list of the waiting messages. This list shows the originating machine identification, the time entered into the originator SAFF, the number of pages in the document, and the approximate time that the message will be delivered based on its position in the queue.

The user can advance a particular message to the head of the queue by calling the fax Service Number and supplying the desired message number, by using the voice response menus. The General Service unit 50 directs these instruction to the System Status and Control Unit 11, which in turn directs them to the Answer Function Host 85 through its Status and Control Interface 84.

Alternately, the originator can designate a priority level to a given fax message at the time it is dialed in (eg. by using a different access code). In this case, the destination SAFF will insert higher priority messages ahead of lower priority messages in the queue as they are received. The originator would normally pay a premium price for this service.

Another originator option is the time of delivery. If desired, the originator can specify the time of day which the message should be delivered. In this case the message is forwarded to the destination SAFF directly, but is not entered into the queue until the specified time. This can be used in combination with an assigned high priority to insert the message at the head of the queue at the appointed time.

When messages are finally delivered to the destination machine they are not immediately erased from the spool file

13

88 at the destination SAFF. Rather, they are maintained in a "Delivered Message" directory **90** for a period of time (typically six hours). A feature offered by this action is the opportunity for the subscribing recipient of a message to make additional copies, redirect, or forward copies of selected messages to other destinations. This is accomplished by calling the Service Number and selecting the appropriate choices from the voice response menus.

Security and Mail Boxes

It is not uncommon for documents of a sensitive nature to be sent by facsimile from place to place. This is often a problem, especially in a busy office or where a machine is nominally unattended during the transmission, in that the originator has no control over who may be standing by the machine when the document prints out, or who may leaf through a stack of faxes piled up in a hopper right after lunch.

This is a problem which others have attempted to deal with in a variety of ways. For example, Bond, U.S. Pat. Nos. 3,594,495 and 3,641,432, discloses a "radio facsimile postal system" which features the direct delivery of documents to specific addressees by facsimile via communications satellites. In this system, intended as a replacement for or supplement to the ordinary "paper" postal system, fax messages were directed from special public fax terminals operated by the post office to a central satellite earth-station. Here the messages were sorted according to their geographical destination for concentration and uplinking to a satellite servicing that area. The satellite then broadcasts all of the uplinked messages back to Earth.

In principle, anyone with a radio receiver in the satellite's service area could access any of the messages, so Bond built in a "privacy code" which operated with the receiver to allow the message to print out only on the desired machine. In reality, this privacy code was nothing more than an addressing signal which enables the selected fax receiving system. Thus, Bond's system is merely a restricted version of the services presently provided to fax users by the telephone networks. His privacy code function is the same as a telephone number: it selects which of a plurality of fax machines will actually receive the message. Unfortunately, his approach leads to exactly the security dilemma facing telephone fax users.

Chapman, U.S. Pat. No. 4,106,060, has approached the problem in a somewhat different way. He too discloses a facsimile-based mail system. However, in his system, the messages are directed by whatever means to a "paper" post office near the addressee, rather than the addressee's home or place of business. This post office then makes a paper copy of the fax message, places it in an envelope, and delivers it to the addressee as ordinary mail. This is a reasonably effective solution to the security problem, but it can only be relied upon to provide "next day" delivery, and there are a number of other, competing alternatives for document delivery service on that time scale.

In the present invention, the security problem is addressed by a control variation of the destination SAFF queuing system. Messages which the originator wishes to designate as secure are temporarily directed to a auxiliary storage file **54**, **89** in the Answer Function of the destination SAFF called a "Mail Box". Instead of being delivered to the destination machine, a report is sent to that machine indicating that a secure message is waiting for a particular addressee. Optionally, a voice message may be directed to a designated telephone number, such as a voice mail box, by the General Service Control **50**.

14

This feature works in the following way. Each individual SAFF is assigned its own unique telephone exchange code or codes (typically indicated by the first three digits of a seven digit local number). Thus, the SAFF appears to the world as if it were a distinct telephone exchange(s), separate from all other exchanges in that area code region. All subscriber's to a given SAFF are assigned their fax telephone numbers with that exchange prefix. Subscribing individuals wishing Mail Boxes (typically associated with a "default" fax machine) are issued "fictitious" telephone numbers which actually terminate in fax Mail Boxes, rather than in an actual telephone line.

Mail Box numbers are published so that correspondents may use them. In addition, each individual is also given a secret security code or PIN number which will access his or her box. The host computer managing the SAFF maintains a list that relates each fictitious number with the individual's name, the security code, and the real telephone number of the default destination machine. This default machine is the one to which messages and reports will normally be sent, when appropriate. In addition to a default fax machine, the user may also define a default voice telephone number which may be either a telephone answered by a human or a computer-managed voice mail box, as is known in the art. When such a voice telephone is also defined, a voice version of the various system messages and reports will also be sent to this number.

An originator wishing to send a secure message merely dials the (fictitious) Mail Box telephone number at the time the document is sent. The system directs the message to the Mail Box file **89** in the destination SAFF associated with that number, and the Answer Host **85** sends a "Message Waiting" report to the default destination fax machine through the Local Interface **83**. If a default voice telephone number has also been defined in this report, this report is also sent to that number. The user has the option of programming or instructing the system, through the General Service Control **50**, to have either or both the default fax and the default voice reports forwarded to another number. For example, the person who is traveling could program or require fax or voice Message Waiting announcements to be directed to a hotel fax or telephone number. When voice announcements are made, the system will give the (human) recipient of the call the option of pressing a touchtone key to repeat the announcement as often as necessary to transcribe the message. If more than one message is in the Mail Box queue, then this report lists them all.

In order to get the fax document actually sent to the destination, the security code must be sent back to the destination SAFF. Typically, this would be done by the addressee dialing his or her own Mail Box number. Since this call originates from a "normal" telephone **34** over Ordinary Local Lines **40**, rather than the fax's SAFF Directed Lines **38**, the call is directed to the Off-net Incoming Screener **48** in the (destination) SAFF which functions in conjunction with a mailbox service control **49**. This unit recognizes that the call is not a fax transmission and thus treats it as a voice service request. A voice response system then prompts the caller to key in the security code. When the correct code is supplied, the SAFF system announces the number of messages waiting and, if desired, the message codes of each. Mail Box contents are maintained in a queue **89** just as are "regular" spool files. Thus, the user is also given the opportunity to reorder the messages within a Mail Box Delivery queue, through the System Status and Control units **11**, **20** in the same way as other messages.

The system finally permits the addressee to make a selection of messages for immediate release, and provides an

15

opportunity to "redirect" them to a fax machine **3** other than the default machine over ordinary local lines **39**. The SAFF then releases the selected documents and moves them to the head of the appropriate destination Delivery Queue **88** for immediate delivery. As described earlier, the recipient of the various messages may then choose to provide automated fax or voice replies to selected messages.

When messages are accepted into the SAFF system and arrive at a mail box, The Answer Function of the destination SAFF issues a "Posting Report" which is directed back to the Originator in the manner described for other reports. The report is similar to a Delivery Report, except that it indicates that the message has been received by the mail box. When the Mail Box Queue is actually read by the addressee the Destination SAFF sends an actual Delivery Report to the originator indicating the date and time of delivery and so forth.

Another advantage of the Mail Box system is that it can provide a convenient way for individuals who are away from their "home" machine to still have access to their documents. Such individuals may call in to their Mail Box number to hear from the voice response unit whether they have any messages waiting. By use of the redirection feature, messages sent to a fax Mail Box can be accessed by an individual with the security code from any telephone with a fax machine.

For example, a person on a business trip can have all his or her fax documents directed to their Mail Box. Upon arriving at a hotel that has a fax machine, the traveler places a call to the Mail Box number and supplies the information outlined above, including the telephone number of the hotel fax machine. The SAFF then calls the hotel machine and dumps the queue of waiting documents.

Another aspect of the Mail Box function is support for paperless fax terminals **33**, such as those which provide a volatile display of the fax image on a computer display. Typically, this terminal is shown in FIG. **8** which includes a small, modem-equipped personal computer **191** and a computer display **194**. The terminal can also include a keyboard **193** for entering necessary access code or other information.

In this circumstance, the paperless terminal initiates the Mail Box transaction operating as a computer terminal (rather than a fax terminal), using a computer terminal emulator program such as those well known in the art. The incoming call from an ordinary line **40** is recognized by the Off-net Incoming Screener **48** as not being a fax transmission and is passed to the Mail Box Service Control **49**. This unit recognizes the call as a computer, rather than voice call and enables a computer, rather than voice, response system. The user and the Mail Box Service Control **49** then communicate by way of some computer communications code such as ASCII.

The system presents the same security code requests as the voice system and provides the same basic user options including message queue listings, queue reordering and so forth. Unlike the voice system, however, it is not necessary to redirect the fax messages to another telephone. The paperless terminal software recognizes simple code sequences sent by the Mail Box Service Control **49** and can be switched under Mail Box Service control from the ASCII computer terminal mode to the fax terminal mode. Thus, the user may select messages from the queue in the computer mode and then the Mail Box Service system will automatically switch the terminal to fax mode, send the fax messages, and then return the terminal to computer mode.

In this way, the paperless terminal user can engage in an ongoing dialogue with the Mail Box Service Control, doing

16

queue manipulations, reading faxes, sending automated fax or voice responses and so forth. When a fax message is read by a paperless terminal on a screen, the user may elect to have the message left in the queue for later disposal and to have a cover page added to indicate the date, time and terminal telephone number from which the fax was originally read. The user may also redirect the message to be printed on an ordinary "hardcopy" device, such as a fax device or a printer. In addition, this mode will also permit the transmission of outgoing fax messages from the paperless terminal and access to the functions of the General Service Control **50**, all without the need to exit the system and dial in again. This permits a single incoming call over a line **40** to permit the user to access essentially all of the services available from the SAFF.

In another approach, the paperless fax terminal can act as an originating machine and a designation machine, in place of ordinary facsimile machine. In this case, the paperless fax terminal may be used in cooperation with a telephone or provided with a sound or flash light generator **192** or **197** as shown in FIGS. **8** and **9** for prompting the addressee to communicate with the SAFF system for receiving a facsimile message while the SAFF attempts to transmit a facsimile message. The SAFF also provides the other services to the paperless fax terminal as provided to the ordinary facsimile machine. For example, the SAFF will temporarily store the fax message and periodically retry to communicate with the destination paperless fax terminal if the terminal is busy or otherwise unavailable to receive at this time.

A companion aspect of this system is a Mail Box Reader device **33** as shown in FIG. **9** which is an alternative of the paperless fax terminal described above. This device is a relatively low-cost adapter which connects the user's telephone to an available ordinary television set to form a simple paperless fax terminal. The Reader device **33** contains a modem capable of both computer and fax operations, programs for these operations, memory **198** to store an incoming document or documents, a processor **195** for controlling the device, a keypad **196** for the input of user commands, a video display generator **199** and a RF modulator **200** suitable for supplying a display signal to the ordinary television set **201**.

The Mail Box Service Control **49** recognizes the Mail Box Reader as a distinct terminal type and supports abbreviated command sequences from its more limited keypad. In addition, it supports paging through sections of a document so that a user can view documents which may be too large to fit into the Reader's memory in one place.

The Mail Box Reader itself has a "zoom" mode that magnifies the image on the screen by mapping a smaller segment of the Reader's memory to the screen. This permits one to overcome the fact that the resolution of the television set may be too limited for a readable display of some of the finer-detailed features of some fax images. The Reader's keypad **196** permits scrolling through messages, both vertically and horizontally in both the normal and zoom mode. Vertical scrolling is transparently coordinated with the Mail Box Service Control's paging functions so that if one scrolls off the end of the segment of a long document stored in memory, the Mail Box Service Control will automatically supply the next segment.

Broadcasting

The queuing, Mail Boxes, and security codes are all derivative benefits of the spooling of messages at the des-

mination SAFF. There is a counterpart advantage to the originator SAFF's spooling as well. Since the originator SAFF maintains a copy of each message, that copy can be used to broadcast messages to multiple destinations.

This can be initiated in a number of ways. For example, the user can dial in a code prefix indicating that a list of destination numbers is to follow. The numbers are then entered and finally another code is entered to signal "end of list". The Originate Host 70 recognizes these inputs and attaches them to the message which follows. As an alternative, the user can store different numbered broadcast telephone lists in the Originate SAFF mass storage files 69 (entered much as described above) and invoke them simply by dialing a two or three digit "short-cut" code. In either case, from there the fax transmission to the originator SAFF proceeds normally.

Upon reception of the list and the document, the originator SAFF proceeds to open as many local loop-back or long-distance lines as it can to deliver the broadcast message to the various destinations, essentially simultaneously. Although the originator is billed for making a number of different calls, in fact the originating machine is only tied up for the time required to make one call. Furthermore, the full power of the delivery system is asserted for each destination machine, including reporting, redials, queuing, and so forth.

A feature related to broadcasting is the redirection of messages by the originator. Since fax messages are spooled at the originator SAFF and held for a period of time even after delivery (typically six hours), the originator can dial the Service Number any time during this period and direct a copy of the spooled message to be sent to other destination machines.

Communications With Non-subscribers

Thus far, the discussion has presumed that both the originator and answerer were subscribers to the SAFF system. It is quite reasonable to assume that subscribers will wish to send or receive fax messages with non-subscribers, as well. While the services provided by the SAFF are more limited in such cases, nevertheless, the system both anticipates and enhances communications with non-subscribers for the benefit of the subscribers.

When a subscriber originates a call to a non-subscriber the delivery process is almost identical to subscriber-to-subscriber calls. The fax data is forwarded to the Answer Function of the appropriate destination SAFF and delivery is pursued, all in the usual way. For the benefit of the subscribing originator, the message is stored in the usual way at the destination SAFF until delivery is completed. If multiple SAFF-processed messages arrive before the delivery is complete, a temporary Delivery Queue will be created and used as required. However, since the non-subscriber will have no account in the system, attempts to use the Service Number to manipulate the queue, forward messages, make multiple copies, and use the other special services available to a subscribing answerer, will be unsuccessful.

Calls originated by a non-subscriber directed to a subscribing answerer move by a somewhat different mechanism. As noted, each SAFF appears to the world as a distinct telephone exchange and all subscriber's to a given SAFF are assigned their fax telephone numbers with that exchange prefix. Consequently, all calls directed to a SAFF subscriber eventually end up at the subscriber's SAFF, whether they originated from within the SAFF system network or not. Messages originating "off-network" can arrive by any route. For example, they may be truly local calls, or they may be

long-distance calls which arrive over any available long-distance network.

In any case, messages originating from a nonsubscriber 33 are delivered to the answering fax machine's SAFF by the local lines 39 provided by the local telephone company. They are answered by the SAFF's Off-net Incoming Screener 48, which, upon noting that they are fax transmissions, directs the calls to the Originate Function 9 of that SAFF. From that point, the call is treated as if it were a local fax call and it is passed over to the Answer Function 12 via the Local Call Loop-back 13 for delivery to the subscriber.

In this situation, an Acceptance Record will be returned to the originating machine, but no further originator services are provided. On the other hand, the answering subscriber has the full range of Answer Function available.

Charges and Detailed Billing

Normally, the Originate Function of the originator SAFF has ultimate responsibility for the management of outgoing messages. It initiates all connections to the Answer Functions of the various SAFFs with which it must communicate. It is the node to which all reports concerning message status and disposition must flow. It interrogates Answer SAFFs when extraordinary updates are required. Consequently, the Originate Function is also the focus of charging data.

The telephone company presumably charges for all of the various services provided by this system. The method, algorithm, and rates are determined by actual costs and applicable regulations. Typically, the user would be billed for telephone connect time, toll charges, extraordinary services, such as those provided by calling the Service Number, the amount of mass storage space consumed as a function of time, and so forth.

One of the user services for which a special charge might be made is a subscriber's customer specific billing system. In this option the user can "flag" each fax transmission with a keyed-in prefix which contains a user customer, client, or project number. This number is stored as a key field in the Transaction File for that call. Thus, when the telephone bill is prepared, the billing computer can sort the subscriber's bill on this field and present the user with a list of all fax messages, total usage time, number of pages, and related charges, all grouped by the subscriber's own customers, clients, or projects. Furthermore, it can accept the subscriber's particular algorithm for billing calls to customers or clients and generate a column showing what the subscriber will bill for the service (as a separate matter from what the SAFF system and the telephone company have billed the subscriber). This can be of great assistance in attributing costs and billing customers for services rendered.

Software Control

In the preferred embodiment, each of the principal units of the SAFF such as described in FIGS. 2, 3, and 4 is controlled by its own computer processing unit or units. These units are interrupt-driven computers which are connected together by the System Status and Control unit 11. This unit is an electronic switch yard for control communications between the Originate, Answer, and other units within a given SAFF, as well as the other SAFFs in the system through the control long-distance trunks 15. While there are many tasks which the various control processors must perform to handle fax operations, the primary ones are intercepting incoming calls, either for fax forwarding or service requests, and delivering the fax messages to their

destinations. The general software organization of these principal activities is shown in FIGS. 5, 6, and 7. It should be noted that these figures are simplified and intended to be generally descriptive. For example, some procedures illustrated here as sequential (for the sake of simplicity) can actually be performed concurrently. Likewise, not every function of the system is represented in detail. Generally speaking, similar results also can be obtained with a number of other obvious arrangements of the functional blocks.

Broadly speaking, fax messages addressed to the Originate Function of a SAFF arise either through the special SAFF Directed Local Lines 4 (FIGS. 2 and 3) as a result of direct connection or dialing a special access code, or they arise from Ordinary Local Lines (off-net lines) 39, 40, 63. Those which arrive via off-net lines are processed first by the Off-net Screener 48, which may direct them to either the Originate Function 9 or to Mail Box Service 49. FIG. 5, therefore combines all three of these related functions.

At the outset, one of the two incoming call interfaces 64 and 65 signals the Host Computer 70 that it is beginning to process a call at 100 in FIG. 5a. These units have their own buffer capability and can tolerate some delay before the Host responds. Ultimately the Host must decide whether it is responding to an on-net or off-net call 101. If it is an off-net call there are two possibilities (excluding wrong numbers) 102: it may either be a fax call, in which case it is from a non-subscriber to a subscriber, or it is a mail box service call. If it is a fax call then the billing for services must be directed to the subscribing destination addressee 112. From that point it is handled like an on-net call as will be described shortly.

If it is not a fax call, then it is presumed to be a mail box service call 103, and the system then determines whether it is a computer or voice-based request. The caller is presented with a voice response menu or computer menu 104 for such service, as appropriate. The user responds to these prompts with a touchtone keypad, verbally, or with computer keystrokes 105 and a decision ladder, shown succinctly as 107 selects the desired implementation routine 108, 109, 110 (for brevity only three typical choices are shown, and this element is actually a loop which will permit multiple commands). The chosen routine passes parameters to a command parser 121 (FIG. 5b) which prepares a command statement which is then sent 122 to the System Status and Control unit 11, through the interface 72. This command will be passed to the Answer Host 85 through its interface 84 for actual action on the Mail Box Queue 89. If the service requires a response to the caller the transmission path is reversed. When the operation is completed 123 the call is terminated.

If on the other hand, the original call is found at 101 to be an on-net call, billing is generally directed at the originator 113 and the Host 70 begins the opening digital dialogue 114 with the calling machine, acting in place of the destination machine. This dialogue includes gathering and storing the fax identifications, originating and destination telephone numbers and so forth 116. The Host opens a Transaction File and links it to a data file 117 for the expected data, and then stores all of the call and file information 118 keyed to the Message Code. The destination telephone number and other information are passed almost immediately 119 to the Outbound Controller 74, which then opens a temporary buffer to hold the fax message in case immediate contact can be established, and it attempts to establish that contact through the destination SAFF.

In pursuing this contact, the Outbound Controller 74 examines the status of available trunks. If trunks are

available, it will immediately attempt to connect with the destination SAFF, otherwise it will defer the call until a trunk is available. In the event of a broadcast message, the Outbound Controller will select the number of trunks to use simultaneously based on the percentage of the trunks already in use, in order to avoid tying up all of the SAFF's outgoing capacity with a single message task. Other considerations can affect these usage choices depending on the details of the setting of the system.

The Host then enters a loop which gets the incoming fax data 125 (FIG. 5b) from the On-net 64 or Off-net 65 Interface's buffer and stores each byte in the fax data file 126 while sending another copy 127 to the Outbound controller 74 until the incoming data is complete 128. The Host then checks 129 with the Outbound controller to see if it was successful in making immediate connection with the destination machine. If it was successful and a satisfactory transfer occurred, then a Delivery Report is sent back 132 to the originating machine before it leaves the line. Otherwise, an Acceptance Report is sent 131, and in either case the outcome is reported 133 to the Transaction File and the call is terminated 134.

A complementary set of activities occurs in the Answer Function of the destination SAFF as described in FIGS. 6a and b. Here an incoming call is detected 136 by the Inbound Control 92 (FIG. 4). The Answer Host Computer 85 then opens a new fax data and Transaction file for the message if there is no current queue for that destination machine, or it prepares to append the data to an existing queue 137. The various call and file parameters are linked and stored 138 and the call parameters are passed through 139 to the Local Interface 83, which then decides 141 whether the call is addressed to a "real" fax number, or a fictitious number terminating in a mail box. If the number is real the Local Interface attempts to contact the destination machine for immediate delivery.

The Host then enters a loop where it gets the incoming data 147, stores it 148 in the fax Delivery Queue, and passes it through 149 to the Local Interface buffer. When the Host determines that the fax transfer is complete 150, it then checks 152 (FIG. 6b) to see if the Local Interface has been able to make immediate delivery. If it has, the Host initiates the transmission of the Delivery Report 167 back through its Status and Control Interface 84 to the System Control and Status unit 11, which in turn updates the Transaction File and sends it back to the originator SAFF over Trunk 15. It is this communication which ultimately results in the immediate Delivery Report described previously. The transaction is then terminated 169.

If immediate connect is not established a Retry Report is sent 153 back through the System Status and Control unit and the Retry sequence begins. The Retry criteria can be varied 154, both in place and with the SAFF setting. For example, if the SAFF is integrated into a local exchange, the SAFF can actually monitor the desired line and simply wait for it to become available. In other settings it will be necessary for the SAFF to actually redial at prescribed intervals. In any case attempts to connect are made 155 and if they are not successful 156 a counter or timer is checked 159 to see if the retry limit has been exceeded. If not, the process is repeated and if so, a Failed Delivery Report 160 is sent back through the system and the effort terminated 170.

If the retry effort is successful, the Delivery Queue is retrieved 158 and message by message 162 the queue is dumped, with a pause 163 after each message to confirm

21

receipt, send a Delivery Report **164** and to check for end of queue **165**. If a message fails during the queue dump, the retry sequence at **154** is resumed at the failure point and the process repeated to a conclusion. When the last message has been received satisfactorily, the transaction is terminated **168**.

If it is determined at **141** (FIG. 6a) that this is a mail box call, a loop is entered which gets the fax data **142** and stores it **143** in the appropriate Mail Box Queue. When the end of message is detected **144**, a Posting Report **145** is sent back **10** through the system and a Message Waiting Report **146** is sent forward through the system to the default destination machine.

General Service calls always arrive on Ordinary Local Lines **5**. Upon detection and answering **172**, the voice response menu is presented **173** to the user. As with the Mail Box Service, the user keys in responses or gives them orally **174** and a decision ladder **175** identifies the desired service routine such as **177**, **178**, or **179**. Here again only a few of the possible choices have been shown for sake of illustration and looping for multiple service requests is provided. The selected service routine generates command parameters which are parsed **181** as system commands and sent **182** to the System Status and Control unit **11** for execution. Upon completion of all requests the call is terminated **183**.

What has been described are the presently preferred embodiments of a system and method for providing a comprehensive interactive facsimile message management system embedded in a switched telephone network. It should be apparent that many modifications to the system and the are possible without departing from the true spirit and scope of the invention.

What is claimed is:

1. A method of facilitating facsimile communications between an originating fax device and a destination fax device, comprising the steps of:

receiving, at an originating store and forward facility, during a first communication session between an originating fax device and an originating store and forward facility, a facsimile message from the originating fax device;

passing the facsimile message from the originating store and forward facility to a destination store and forward facility; and

forwarding a portion of the information to a destination fax device by the destination store and forward facility while said receiving step is still being performed and prior to termination of the first communication session.

2. The method as claims in claim **1**, wherein the information comprises a message and a command, and wherein said passing the information step comprises the step of passing the message and command, and said forwarding step comprises the step of forwarding the message while said receiving step is still being performed.

3. A method of facilitating facsimile communications, comprising the steps of:

identifying a first store and forward facility;

assigning to each subscriber of a plurality of subscribers a unique destination telephone number, wherein the dialing of the unique destination telephone number of each subscriber results in the related telephone call being switched by the switched telephone network to the first store and forward facility;

receiving at the first store and forward facility a telephone call switched to the store and forward facility by the switched telephone network as result of a sender dial-

22

ing one of the unique destination telephone numbers, whereby an originating telephone call is made;

receiving over the originating telephone call connection information from an originating fax device at the first store and forward facility;

forwarding at least some of the information from the first store and forward facility to at least a second store and forward facility geographically separated from the first store and forward facility;

storing at least some of the information in the second store and forward facility; and

while the steps of receiving information, forwarding and storing are still being performed, sending at least some of the information to a destination associated with the unique destination telephone number.

4. The method as claimed in claim **3**, wherein said sending step comprises the step of sending at least some of the information to a mailbox defined in a computer storage medium, whereby the destination associated with the unique destination telephone number is the mailbox.

5. The method as claimed in claim **3**, wherein said sending step comprises the step of sending at least some of the information to a telephone line of a destination fax device.

6. The method of claim **3**, further comprising the steps of: at least temporarily storing the message at the second store and forward facility; and

managing the information stored in the second facsimile store and forward facility by commands received at the originating store and forward facility after the information has been stored in the second facsimile store and forward facility.

7. The method of claim **3**, further comprising the step of communicating a status report back to the calling fax device.

8. The method of claim **3**, wherein the forwarding step includes the step of transmitting by a most expedient communication mechanism.

9. The method of claim **3**, wherein the forwarding step includes delivery over the switched telephone network.

10. The method of claim **3**, wherein the forwarding step includes delivery employing digital communications.

11. The method of claim **3**, wherein the second store and forward facility dials the unique destination telephone number and attempts delivery of the facsimile message to a fax device over the switched telephone network.

12. The method of claim **11**, further comprising the step of, if a fax device does not answer or receive at the time the second store and forward facility attempts delivery, periodically redialing the unique destination telephone number and retrying delivery of the facsimile message.

13. The method of claim **12**, further comprising the step of, upon successful completion of a delivery of the facsimile message to a fax device upon dialing of the unique destination telephone number, generating a confirmation message confirming delivery.

14. A method of facilitating communications between an originating fax device and a destination, comprising the steps of:

identifying a store and forward facility;

assigning to each subscriber of a plurality of subscribers a unique destination telephone number, wherein the dialing of the unique destination telephone number of each subscriber results in the related telephone call being switched by a switched telephone network to the first store and forward facility;

receiving at the first store and forward facility a telephone call switched to the store and forward facility by the

23

switched telephone network as result of a sender dialing one of the unique destination telephone numbers, whereby an originating telephone call connection is made;

receiving over the originating telephone call connection from an originating fax device by the store and forward facility a fax image generated by the originating fax device; and

forwarding by the store and forward facility of at least a portion of the image to a destination associated with the first unique destination telephone number while the step of receiving a fax image is still being performed.

15. The method of claim 14, further comprising the step of notifying the originating fax device of successful delivery of the fax image to the destination.

16. The method of claim 14, wherein the forwarding step comprises the step of forwarding by the store and forward facility of at least a portion of the fax image to a destination fax device while the step of receiving a fax image is still being performed.

17. The method of claim 14, wherein the forwarding step comprises the steps of:

passing at least a portion of the image from the store and forward facility to a second store and forward facility; and

forwarding by the second store and forward facility of at least a portion of the image to a destination fax device associated with the first unique destination telephone number while the step of receiving a fax image and the passing step are still being performed.

18. The method of claim 14, wherein the forwarding step comprises the step of forwarding by the store and forward facility of at least a portion of the image to a destination mailbox defined in a computer storage and associated with the first unique destination telephone number, while the receiving step is still being performed.

19. The method of claim 14, further comprising the steps of:

subsequent in time to the step of receiving a fax image and while the forwarding step is being performed, receiving at the store and forward facility a second telephone call switched to the store and forward facility by the switched telephone network as result of a second sender dialing the first unique destination telephone number, and receiving at the store and forward facility a fax image from and generated by a second originating fax device; and

while the forwarding step is being performed, appending the image received from the second originating fax device to that image received during the first receiving step; and

forwarding to the destination the appended image along with and subsequent to the image received during the first step of receiving a fax image.

20. A method of facilitating communications between an originating fax device and a destination, comprising the steps of:

identifying a store and forward facility;

assigning to each subscriber of a plurality of subscribers a unique destination telephone number, wherein the dialing of the unique destination telephone number of each subscriber results in the related telephone call being switched by the switched telephone network to the first store and forward facility;

receiving at the first store and forward facility a telephone call switched to the store and forward facility by the

24

switched telephone network as result of a sender dialing one of the unique destination telephone numbers, whereby an originating telephone call is made;

receiving over the originating telephone call connection, from an originating fax device, by the store and forward facility, a fax image generated by the originating fax device; and

attempting by the store and forward facility to contact a destination associated with the first unique destination telephone number while the receiving step is still being performed.

21. The method of claim 20, further comprising the step of notifying the originating fax device of successful delivery of the image to the destination.

22. The method of claim 20, wherein the attempting step comprises the steps of:

passing at least a portion of the image from the store and forward facility to a second store and forward facility; and

trying by the second store and forward facility to contact a destination fax device while the receiving a fax image step and passing step are still being performed.

23. The Method of claim 20, further comprising the step of placing a copy of the image in a mailbox defined in a computer storage and associated with the first unique destination telephone number.

24. The method of claim 23, wherein the placing step is begun while the attempting step is being performed.

25. The method of claim 23, wherein the placing step is performed upon failure to contact the destination during the attempting step.

26. The method of claim 18 or 23, further comprising the step, in response to instructions received from a mailbox subscriber, of transmitting the image stored in that subscriber's mailbox to a fax device.

27. The method of claim 14 or 20, further comprising the step of retaining the image in storage associated with the store and forward facility for a predetermined time period after successful delivery of the image to the destination, and, in response to instructions received with respect to a particular fax image, the step of retransmitting that particular fax image to additional facsimile devices.

28. The method of claim 17 or 22, further comprising the step of retaining the image in storage associated with the store and forward facility for a predetermined time period after successful delivery of the image to the destination, and, in response to instructions received with respect to a particular fax image, the step of retransmitting that particular fax image to additional facsimile devices.

29. The method claim 14 or 20, further comprising the step of confirming successful delivery of the image to the destination.

30. The method of claim 18 or 23, further comprising the step, in response to instructions received from a mailbox subscriber via telephone, of transmitting the image stored in that subscriber's mailbox to a fax device.

31. The method of claim 20, further including the step of establishing in storage associated with the store and forward facility a linked queue spooling all stored images intended for a particular destination, and transmitting all the spooled images intended for that particular destination upon successfully making contact with the destination.

32. The method of claim 20, further including the step, upon being unsuccessful in contacting the destination, of transmitting a message to the originating fax device, either directly or through another store and forward facility associated with that particular originating fax device, indicating

25

that the image has been entered into storage at one of the store and forward facilities, and at least also indicating the reason for a delay in successfully contacting the destination.

33. A facsimile communication method comprising the steps of:

- identifying at least one store and forward facility;
- assigning to each subscriber of a plurality of subscribers a unique destination telephone number, wherein the dialing of the unique destination telephone number of each subscriber will result in the related telephone call being switched by a switched telephone network to the at least one store and forward facility;
- associating a unique mailbox defined in at least one computer storage device with each particular subscriber of the plurality of subscribers;
- receiving at the at least one store and forward facility a telephone call switched to the store and forward facility by the public switched telephone network as result of a sender dialing one of the unique destination telephone numbers, whereby an originating telephone call connection is made;
- receiving at the store and forward facility, from an originating fax device, over the originating telephone call connection, a facsimile message; and
- directing the facsimile message received over the originating telephone call connection to the mailbox associated with the subscriber to whom the dialed one of the unique destination telephone numbers is assigned.

34. The method of claim 33, wherein the step of associating includes associating, with particular subscribers, mailboxes defined in a computer storage device geographically separated from the at least one store and forward facility, and the directing step includes directing the facsimile message to a mailbox defined in the computer storage device geographically separated from the at least one store and forward facility.

35. The method of claim 33, wherein the method further comprises the step of forwarding, while the receiving a facsimile message step is still being performed, at least some of the message from the at least one store and forward facility to at least a second store and forward facility geographically separated from the at least one store and forward facility.

36. The method of claim 35, wherein the forwarding step includes the step of transmitting by a most expedient communication mechanism.

37. The method of claim 35, wherein the forwarding step includes delivery over the switched telephone network.

38. The method of claim 35, wherein the forwarding step includes delivery employing digital communications.

39. The method of claim 35, wherein the mailbox of a particular subscriber is defined in a mass storage local to the second store and forward facility, and the directing step includes directing the facsimile message to a mailbox defined in the mass storage local to the second store and forward facility.

40. The method of claim 33, further including the step of, in response to instructions received from a subscriber, transmitting facsimile messages stored in that subscriber's mailbox to a facsimile machine designated by that subscriber in the instructions.

41. The method of claim 33, wherein a subscriber accessing his mailbox by a modem equipped computer may view facsimile messages stored in his respective mailbox.

42. The method of claim 33, wherein the mailbox of a particular subscriber is defined in a mass storage remote to

26

the first store and forward facility, and the directing step includes directing the facsimile message to a mailbox defined in the mass storage remote to the store and forward facility.

43. The method of claim 33, wherein a subscriber accessing his mailbox from a computer may view facsimile messages stored in his respective mailbox.

44. A facsimile communication method comprising the steps of:

- identifying at least one store and forward facility;
- assigning to each subscriber of a first plurality of subscribers a unique destination telephone number, wherein the dialing of the unique destination telephone number of each system subscriber results in the related telephone call being switched by a public switched telephone network to the at least one store and forward facility;
- associating a unique mailbox defined in at least one computer storage device with each mailbox subscriber of a plurality of mailbox subscribers, which mailbox subscribers are, also, subscribers of the first plurality of subscribers;
- receiving at the at least one store and forward facility a telephone call switched to the store and forward facility by the public switched telephone network as result of a sender dialing one of the unique destination telephone numbers, whereby an originating telephone call connection is made;
- receiving at the store and forward facility, from an originating fax device, over the originating telephone call connection, a facsimile message; and
- if the dialed one of the unique destination telephone numbers is a destination telephone number assigned to a mailbox subscriber, directing the facsimile message to respective subscriber's mailbox.

45. The method of claim 44, wherein the step of associating includes associating, with particular subscribers, mailboxes defined in a computer storage device geographically separated from the at least one store and forward facility, and the directing step includes directing the facsimile message to a mailbox defined in the computer storage device geographically separated from the at least one store and forward facility.

46. The method of claim 44, wherein the method further comprises the step of forwarding, while the receiving a facsimile message step is still being performed, at least some of the message from the at least one store and forward facility to at least a second store and forward facility geographically separated from the at least one store and forward facility.

47. The method of claim 46, wherein the forwarding step includes the step of transmitting by a most expedient communication mechanism.

48. The method of claim 46, wherein the forwarding step includes delivery over the switched telephone network.

49. The method of claim 46, wherein the forwarding step includes delivery employing digital communications.

50. The method of claim 46, wherein the destination telephone number dialed by the sender is not assigned to a mailbox subscriber, and wherein the second store and forward facility dials the one of the unique destination telephone numbers and attempts delivery of the facsimile message to a fax device over the switched telephone network.

51. The method of claim 46, wherein the mailbox of a particular subscriber is defined in a mass storage local to the second store and forward facility, and the directing step

27

includes directing the facsimile message to a mailbox defined in the mass storage local to the second store and forward facility.

52. The method of claim 46, wherein the second store and forward facility attempts delivery of the facsimile message to a fax device over the switched telephone network.

53. The method of claim 44, wherein a subscriber accessing his mailbox by a modem equipped computer may view facsimile messages stored in his respective mailbox.

54. The method of claim 44, wherein the mailbox of a particular subscriber is defined in a mass storage remote to the first store and forward facility, and the directing step includes directing the facsimile message to a mailbox defined in the mass storage remote to the store and forward facility.

55. The method of claim 44, wherein the destination telephone number dialed by the sender is not assigned to a mailbox subscriber, and wherein the at least one store and forward facility dials the one of the unique destination telephone numbers and attempts delivery of the facsimile message to a fax device over the switched telephone network.

56. The method of claim 55, further comprising the step of, if a fax device does not answer or receive at the time the at least one store and forward facility attempts delivery, periodically redialing the one of the unique destination telephone numbers and retrying delivery of the facsimile message.

57. The method of claim 56, further comprising the step of, upon successful completion of a delivery of the facsimile message to a fax device upon dialing of the one of the unique destination telephone numbers, generating a confirmation message confirming delivery.

58. The method of claim 44, wherein all subscribers of said first plurality of subscribers are mailbox subscribers.

59. The method of claim 44, wherein a subscriber accessing his mailbox from a computer may view facsimile messages stored in his respective mailbox.

60. The method of claim 44, wherein the at least one store and forward facility attempts delivery of the facsimile message to a fax device over the switched telephone network.

61. The method of claim 60, further comprising the step of, if a fax device does not answer or receive at the time the at least one store and forward facility attempts delivery, periodically redialing the one of the unique destination telephone numbers and retrying delivery of the facsimile message.

62. The method of claim 61, further comprising the step of, upon successful completion of a delivery of the facsimile message to a fax, generating a confirmation message confirming delivery.

63. The method of claim 44, further including the step of, in response to instructions received from a subscriber, transmitting facsimile messages stored in that subscriber's mailbox to a facsimile machine designated by that subscriber in the instructions.

64. A facsimile communication method comprising the steps of:

identifying at least one store and forward facility;

assigning to each subscriber of a plurality of subscribers a unique destination telephone number, wherein the dialing of the unique destination telephone number of each subscriber will result in the related telephone call being switched by a switched telephone network to the at least one store and forward facility;

identifying mailboxes defined in at least one mass storage device and associated with particular subscribers;

28

associating the mailbox of a particular subscriber with that subscriber's unique destination telephone number; receiving at the at least one store and forward facility a telephone call switched to the store and forward facility by the public switched telephone network as result of a sender dialing one of the unique destination telephone numbers, whereby an originating telephone call connection is made;

receiving facsimile information at the at least one store and forward facility, from an originating fax device, over the originating telephone call connection; and

directing the facsimile information received over the originating telephone call connection to the mailbox associated with the dialed one of the unique destination telephone numbers.

65. The method of claim 64, further comprising the step of, in response to instructions received from a subscriber, transmitting facsimile information stored in that subscriber's mailbox to a facsimile machine designated by that subscriber in the instructions.

66. The method of claim 64, wherein a subscriber accessing his mailbox by a modem equipped computer may view facsimile information stored in his respective mailbox.

67. The method of claim 64, wherein the mailbox of a particular subscriber is defined in a mass storage remote to the receiving store and forward facility, and the directing step includes directing the facsimile message to a mailbox defined in the mass storage remote to the store and forward facility.

68. A method of delivering a facsimile image, said method comprising the steps of:

assigning to each subscriber of a plurality of subscribers a unique destination telephone number, wherein the dialing of the unique destination telephone number of each subscriber will result in the related telephone call being switched by a switched telephone network to a first call handling facility;

identifying mailboxes defined in at least one network based mass storage device and associated with particular subscribers;

associating the mailbox of a particular subscriber with that subscriber's unique destination telephone number; receiving a fax image at the mailbox of a particular subscriber, which receiving is initiated by a sender dialing the particular subscriber's unique destination telephone number at a sending fax device,

whereby a sender of a fax image dials a unique destination telephone number intending delivery of a fax image to the subscriber to whom the number is assigned, and delivery of the fax image to the subscriber's associated mailbox results; and

granting to a remote computer terminal access to a particular subscriber's mailbox during a communication session initiated by the remote computer terminal; and

providing to a subscriber at the remote computer terminal, during the communication session, at least the user options consisting of: viewing a queue of facsimile messages in the particular subscriber's mailbox; selecting facsimile messages from the queue; deleting messages from the queue; arranging the queue according to priority; and reading fax messages in the particular subscriber's mailbox.

29

69. A method of delivering a facsimile image, said method comprising the steps of:

associating each telephone number of a first plurality of telephone numbers on a switched telephone network with an intended recipient of a first plurality of intended facsimile recipients;

receiving at a first call handling facility a telephone call directed to one of the telephone numbers of the first plurality of telephone numbers and switched to the call handling facility by the switched telephone network as a result of the dialing of the one of the telephone numbers;

answering at the call handling facility the received telephone call and interacting using facsimile protocol with an originating fax machine on the other end of the call; during the call, receiving at the call handling facility from the originating fax device a fax message, using facsimile protocol; and

directing the fax message to one of the destinations selected from the group consisting of (i) a mailbox defined in a computer storage and associated prior to the receipt of the call with a particular recipient and with the particular one of the plurality of telephone numbers and (ii) a fax receiving device.

70. The method of claim **69**, wherein the fax receiving device comprises a computer terminal with modem.

71. The method of claim **69**, wherein, during the directing step, the fax message is directed to a mailbox; and wherein the method further comprises the step of, in response to instructions received from the particular recipient associated with the mailbox, transmitting the fax message from the mailbox to a fax device.

72. The method of claim **71**, wherein the fax receiving device comprises a computer terminal with modem.

73. The method of claim **71**, wherein a fax message in the mailbox of a particular recipient is accessible by that recipient via a computer terminal with modem.

74. The method of claim **71**, wherein a fax message in a particular recipient's mailbox is viewable by the recipient gaining access to said particular recipient's mailbox through a computer terminal which access the mailbox via the switched telephone network.

75. The method of claim **71**, wherein the mailbox of a particular subscriber is defined in a mass storage remote to the receiving call handling facility.

76. The method of claim **71**, wherein the directing step comprises at least the step of transferring the facsimile message from the first call handling facility to a second call handling facility remote to the first call handling facility; and wherein the mailbox of the particular recipient is defined in mass storage local to the second call handling facility.

77. The method of claim **71**, further comprising the step of providing access to the mailbox of the particular recipient by dialing in to a computer associated with the computer storage.

78. The method of claim **69**, wherein, during the directing step, the fax message is directed to a mailbox.

79. The method of claim **78**, wherein the directing step comprises at least the step of transferring the facsimile message from the first call handling facility to a second call handling facility remote to the first call handling facility; and where the mailbox of the particular recipient is defined in mass storage local to the second call handling facility.

80. The method of claim **78**, further comprising the step of providing access to the mailbox of the particular recipient by dialing in from a computer to a computer associated with the computer storage.

30

81. The method of claim **80**, further comprising the step of enabling, after providing access to the mailbox, one or more of actions selected from the group consisting of: viewing a queue of facsimile messages in the particular subscriber's mailbox; selecting facsimile messages from the queue; deleting messages from the queue; arranging the queue according to priority; reading fax messages in the particular subscriber's mailbox; displaying at the remote computer terminal a facsimile message stored in the particular subscriber's mailbox; redirecting a facsimile message in the particular subscriber's mailbox to a facsimile device; and redirecting a facsimile message in the particular subscriber's mailbox to a printer.

82. The method of claim **78**, wherein the mailbox of a particular subscriber is defined in a mass storage remote to the receiving call handling facility.

83. A facsimile communication method comprising the steps of:

receiving at a store and forward facility a telephone call initiated by a sender dialing a destination telephone number uniquely identified with a first subscriber of a plurality of subscribers, whereby an originating telephone call connection is made

receiving at the store and forward facility, from an originating fax device, over the originating telephone call connection, a facsimile message intended for the destination of the first subscriber's unique destination telephone number;

directing the facsimile message intended for the first subscriber's destination telephone number to an electronic mailbox associated with the first subscriber prior to the step of receiving the call;

granting to a remote computer terminal access to a particular subscriber's mailbox during a communication session initiated by the remote computer terminal; and

providing to a subscriber at the remote computer terminal, during the communication session, one or more user options selected from the group consisting of: viewing a queue of facsimile messages in the particular subscriber's mailbox; selecting facsimile messages from the queue; deleting messages from the queue; arranging the queue according to priority; displaying at the remote computer terminal a facsimile message stored in the particular subscribers mailbox; and reading fax messages in the particular subscriber's mailbox.

84. The method of claim **83**, wherein the providing step comprises the step of

providing to a subscriber at the remote computer terminal, during the communication session, at least the user options consisting of: viewing a queue of facsimile messages in the particular subscriber's mailbox; selecting facsimile messages from the queue; deleting messages from the queue; arranging the queue according to priority; and reading fax messages in the particular subscriber's mailbox.

85. The method of claim **18** or **33** or **34** or **64**, further comprising the steps of:

granting to a computer terminal access to a particular subscriber's mailbox; and

allowing a user at the computer terminal to view a facsimile message stored in the particular subscriber's mailbox.

86. The method of claim **85**, and wherein the granting and allowing steps are performed only after receipt at a store and forward facility of a unique PIN number of the subscriber associated with the respective mailbox.

31

87. The method of claim 85, and wherein the granting and allowing steps are performed only after receipt at a store and forward facility of a unique PIN number of the subscriber associated with the respective mailbox.

88. The method of claim 18 or 33 or 34 or 64 or 83, further comprising the steps of:

receiving a call at the at least one store and forward facility over the switched telephone network from a remote computer terminal, whereby a communication session is established;

granting to the remote computer terminal access to a particular subscriber's mailbox; and

allowing a user at the remote computer terminal to view a facsimile message stored in the particular subscriber's mailbox.

89. The method of claim 88, and wherein the granting and transmitting steps are performed only after receipt at a store and forward facility of a unique PIN number of the subscriber associated with the respective mailbox.

90. The method of claim 88, further comprising the step of providing to a subscriber at the remote computer terminal, during the communication session, one or more of user options selected from the group consisting of: viewing a queue of facsimile messages in the particular subscriber's mailbox; selecting facsimile messages from the queue; deleting messages from the queue; arranging the queue according to priority; reading fax messages in the particular subscriber's mailbox; redirecting a facsimile message in the particular subscriber's mailbox to any facsimile device; and redirecting a facsimile message in the particular subscriber's mailbox to a printer.

91. The method of claim 90, and wherein the granting, transmitting and providing steps are performed only after receipt at a store and forward facility of a unique PIN number of the subscriber associated with the respective mailbox.

92. The method of claim 88, further comprising the steps of providing to a subscriber at the remote computer terminal, during the communication session, at least the user options consisting of: viewing a queue of facsimile messages in the particular subscriber's mailbox; selecting facsimile messages from the queue; deleting messages from the queue; arranging the queue according to priority; and reading fax messages in the particular subscriber's mailbox.

93. The method of claim 92, and wherein the granting and providing steps are performed only after receipt at a store and forward facility of a unique PIN number of the subscriber associated with the respective mailbox.

94. The method of claim 34, 45, 64, 67, or 75, wherein a subscriber accessing his mailbox from a computer may view facsimile messages stored in his respective mailbox.

95. The method of claim 18 or 33 or 34 or 64 or 83, further comprising the steps of:

establishing a modem connection between the at least one store and forward facility and a modem equipped computer, at the initiation of the modem equipped computer;

granting to the modem equipped computer access to a particular subscriber's mailbox;

allowing a user at the modem equipped computer to view a facsimile message stored in the respective mailbox; and then redirecting the fax message to a remote facsimile device in response to commands issued from the modem equipped computer.

96. The method of claim 95, and wherein the granting, allowing and redirecting steps are performed only after

32

receipt at a store and forward facility of a unique PIN number of the subscriber associated with the respective mailbox.

97. The method of claim 18 or 33 or 34 or 64 or 83, further comprising the steps of:

granting to a remote computer terminal access to a particular subscriber's mailbox during a communication session initiated by the remote computer terminal; and

in response to instructions received from the remote computer terminal during the communication session, transmitting facsimile messages stored in a particular subscriber's mailbox to the remote computer terminal.

98. The method of claim 18 or 33 or 64 or 83, further comprising the step of, in response to instructions received from a subscriber, transmitting facsimile messages stored in that subscriber's mailbox, via the public switched telephone network, to any particular facsimile device designated in the instructions by the subscriber, whereby a subscriber who is traveling or otherwise away from the fixed location of his facsimile device may have facsimile messages collected in his mailbox, and retrieve them from any location where any other facsimile device is situated.

99. The method of claim 98, and wherein the transmitting step is performed only after receipt at at least one store and forward facility of a unique PIN number of the subscriber associated with the respective mailbox.

100. The method of claim 34 or 45, further comprising the step of, in response to instructions received from a subscriber, transmitting facsimile messages stored in that subscriber's mailbox at the geographically separated storage device, via the public switched telephone network, to any particular facsimile machine designated in the instructions by the subscriber, whereby a subscriber who is traveling or otherwise away from the fixed location of his facsimile machine may have facsimile messages collected in his mailbox, and retrieve them from any location where any other facsimile machine is situated.

101. The method of claim 100, and wherein the transmitting step is performed only after receipt at a store and forward facility of a unique PIN number of the subscriber associated with the respective mailbox.

102. The method of claim 39 or 51, further comprising the step of, in response to instructions received from a subscriber, transmitting facsimile messages stored in that subscriber's mailbox at the second store and forward facility, via the public switched telephone network, to any particular facsimile machine designated in the instructions by the subscriber, whereby a subscriber who is traveling or otherwise away from the fixed location of his facsimile machine may have facsimile messages collected in his mailbox, and retrieve them from any location where any other facsimile machine is situated.

103. The method of claim 102, and wherein the transmitting step is performed only after receipt at a store and forward facility of a unique PIN number of the subscriber associated with the respective mailbox.

104. The method of claim 42 or 54 or 67, further comprising the step of, in response to instructions received from a subscriber, transmitting facsimile messages stored in that subscriber's mailbox at the remote storage, via the public switched telephone network, to any particular facsimile machine designated in the instructions by the subscriber, whereby a subscriber who is traveling or otherwise away from the fixed location of his facsimile machine may have facsimile messages collected in his mailbox, and retrieve them from any location where any other facsimile machine is situated.

33

105. The method of claim **104**, and wherein the transmitting step is performed only after receipt at a store and forward facility of a unique PIN number of the subscriber associated with the respective mailbox.

106. The method of claim **18** or **33** or **64** or **83**, further including the steps of:

receiving at a store and forward facility a second telephone call switched to the store and forward facility by the switched telephone network as a result of a particular subscriber dialing his unique destination telephone number, whereby a second call connection is made;

recognizing that the second telephone call is not a fax transmission; and

providing to the particular subscriber during the second call connection one or more user options selected from the group consisting of: hearing a queue of facsimile messages in the particular subscriber's mailbox; viewing a queue of facsimile messages in the particular subscriber's mailbox;

selecting facsimile messages from the queue; deleting messages from the queue; arranging the queue according to priority; hearing facsimile messages in the particular subscriber's mailbox; reading fax messages in the particular subscriber's mailbox; displaying at a remote computer terminal a facsimile message stored in the particular subscriber's mailbox; redirecting a facsimile message in the particular subscriber's mailbox to a facsimile device; and redirecting a facsimile message in the particular subscriber's mailbox to a printer.

107. The method of claim **106**, wherein the mailbox of the particular subscriber is defined in a computer storage device geographically separated from the store and forward facility with which the originating telephone call connection was made.

108. The method of claim **106**, wherein the mailbox of the particular subscriber is defined in a computer storage device geographically separated from the store and forward facility with which the second telephone call connection was made.

109. The method of claim **106**, wherein the providing step is performed only after receipt at a store and forward facility of a unique PIN number of the particular subscriber.

110. The method of claim **106**, and wherein the store and forward facility with which the originating call connection is made and the store and forward facility with which the second call connection is made are the same store and forward facility.

111. The method of claims **18** or **33** or **64**, further comprising the step of, during a communication session initiated by a paperless facsimile terminal machine operating in a computer communication mode, transmitting facsimile messages stored in that subscriber's remote mailbox to the paperless facsimile terminal machine for display on a screen.

112. The method of claim **111**, and wherein the transmitting step is performed only after receipt at a store and forward facility from the paperless facsimile terminal

34

machine of a unique PIN number of the subscriber associated at the respective mailbox.

113. The method of claim **111**, further comprising the steps of providing to the subscriber at the paperless facsimile terminal machine, during communication session, one or more of user options selected from the group consisting of; viewing a queue of facsimile messages in the particular subscriber's mailbox; selecting facsimile messages from the queue; deleting messages from the queue; arranging the queue according to priority; reading fax messages in the particular subscriber's mailbox; redirecting a facsimile message in the particular subscriber's mailbox to a facsimile device; and redirecting a facsimile message in the particular subscriber's mailbox to a printer.

114. The method of claim **111**, further comprising the steps of providing to the subscriber at the paperless facsimile terminal machine, during the communication session, at least the user options consisting of: viewing a queue of facsimile messages in the particular subscriber's mailbox; selecting facsimile messages from the queue; deleting messages from the queue; arranging the queue according to priority; and reading fax messages in the particular subscriber's mailbox.

115. The method of claim **114**, further comprising the steps of, during the communication session, receiving at a store and forward facility from the paperless facsimile terminal machine an outgoing facsimile message for delivery to an outbound destination and, in response to instruction received from the paperless facsimile terminal machine, transmitting the facsimile message from the store and forward facility to the outbound destination.

116. The method of claim **111**, further comprising the steps of, during the communication session, receiving at a store and forward facility from the paperless facsimile terminal machine an outgoing facsimile message for delivery to an outbound destination and, in response to instruction received from the paperless facsimile terminal machine, transmitting the facsimile message from the store and forward facility to the outbound destination.

117. The method of claim **111**, wherein mailboxes of particular subscribers are in a computer storage device geographically separated from the at least one store and forward facility, and wherein the transmitting step includes transmitting a facsimile message from a mailbox in the computer storage geographically separated from the at least one store and forward facility.

118. The method of claim **34**, **45**, **67**, **75**, or **78**, wherein a fax message in the mailbox of a particular recipient is accessible by that recipient via a computer terminal.

119. The method of claim **78**, wherein a fax message in a particular recipient's mailbox is viewable by the recipient gaining access to said particular recipient's mailbox through a computer terminal which accesses the mailbox via a communication link initiated from the computer terminal on the switched telephone network.

* * * * *