



US007882057B1

(12) **United States Patent**
Little et al.

(10) **Patent No.:** **US 7,882,057 B1**
(45) **Date of Patent:** **Feb. 1, 2011**

(54) **COMPLEX CONFIGURATION PROCESSING USING CONFIGURATION SUB-MODELS**

6,675,294 B1	1/2004	Gupta et al.	
6,721,748 B1 *	4/2004	Knight et al.	707/3
7,043,407 B2	5/2006	Lynch et al.	
7,200,582 B1	4/2007	Smith	
7,464,064 B1	12/2008	Smith	
2003/0187950 A1 *	10/2003	Rising, III	709/218

(75) Inventors: **Nathan E. Little**, Austin, TX (US);
Brandon M. Beck, Austin, TX (US);
Brian K. Showers, Cedar Park, TX (US)

(73) Assignee: **Trilogy Development Group, Inc.**,
Austin, TX (US)

(*) Notice: Subject to any disclaimer, the term of this patent is extended or adjusted under 35 U.S.C. 154(b) by 0 days.

(21) Appl. No.: **10/957,919**

(22) Filed: **Oct. 4, 2004**

(51) **Int. Cl.**
G06F 17/00 (2006.01)
G06N 5/04 (2006.01)

(52) **U.S. Cl.** **706/60**

(58) **Field of Classification Search** 706/1,
706/15, 45, 46, 47, 6, 20, 8, 28, 60; 700/1,
700/90, 30; 707/3, 10; 709/218; 710/8;
703/25; 705/56, 26, 103

See application file for complete search history.

(56) **References Cited**

U.S. PATENT DOCUMENTS

5,515,524 A	5/1996	Lynch	
5,708,798 A	1/1998	Lynch et al.	
5,825,651 A *	10/1998	Gupta et al.	700/103
6,002,854 A	12/1999	Lynch et al.	
6,115,547 A	9/2000	Ghatate et al.	
6,167,383 A *	12/2000	Henson	705/26
6,405,308 B1	6/2002	Gupta et al.	
6,430,730 B1	8/2002	Ghatate et al.	

OTHER PUBLICATIONS

<http://web.archive.org/web/20030324212039/http://fordvehicles.com/>*

* cited by examiner

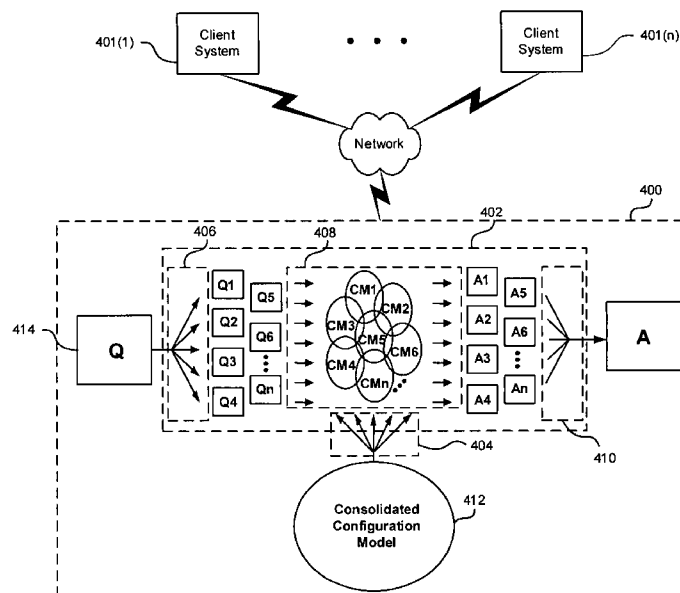
Primary Examiner—Michael B. Holmes
Assistant Examiner—Peter Coughlan

(74) *Attorney, Agent, or Firm*—Hamilton & Terrile, LLP;
Kent B. Chambers

(57) **ABSTRACT**

A configuration model dividing and configuration sub-model inference processing system and procedure addresses the issue of configuration model and query complexity by breaking a configuration problem down into a set of smaller problems, solving them individually and recombining the results into a single result that is equivalent to a conventional inference procedure. In one embodiment, a configuration model is divided into configuration sub-models that can respectively be processed using existing data processing resources. A sub-model inference procedure provides a way to scale queries to larger and more complicated configuration models. Thus, the configuration model dividing and configuration sub-model processing system and inference procedure allows processing by a data processing system of configuration models and queries whose collective complexity exceeds the complexity of otherwise unprocessable conventional, consolidated configuration models and queries.

46 Claims, 8 Drawing Sheets



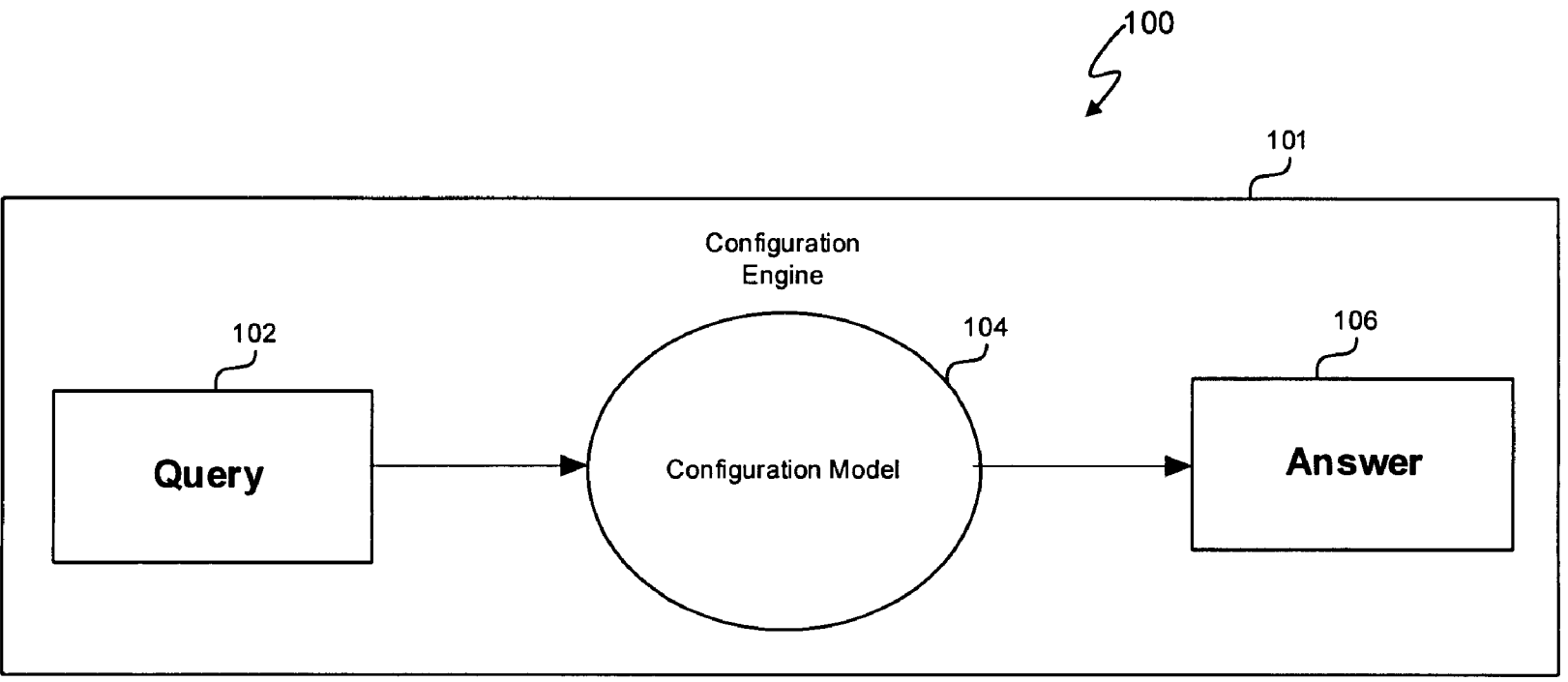


Figure 1 (prior art)

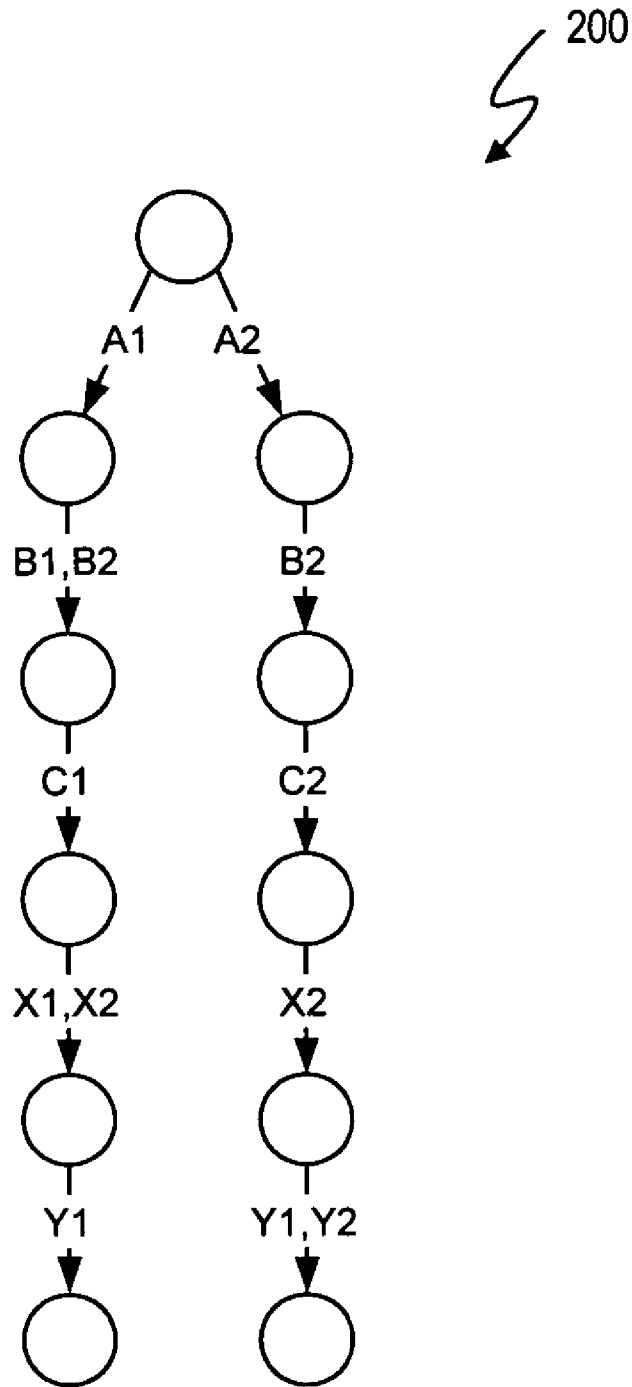


Figure 2 (prior art)

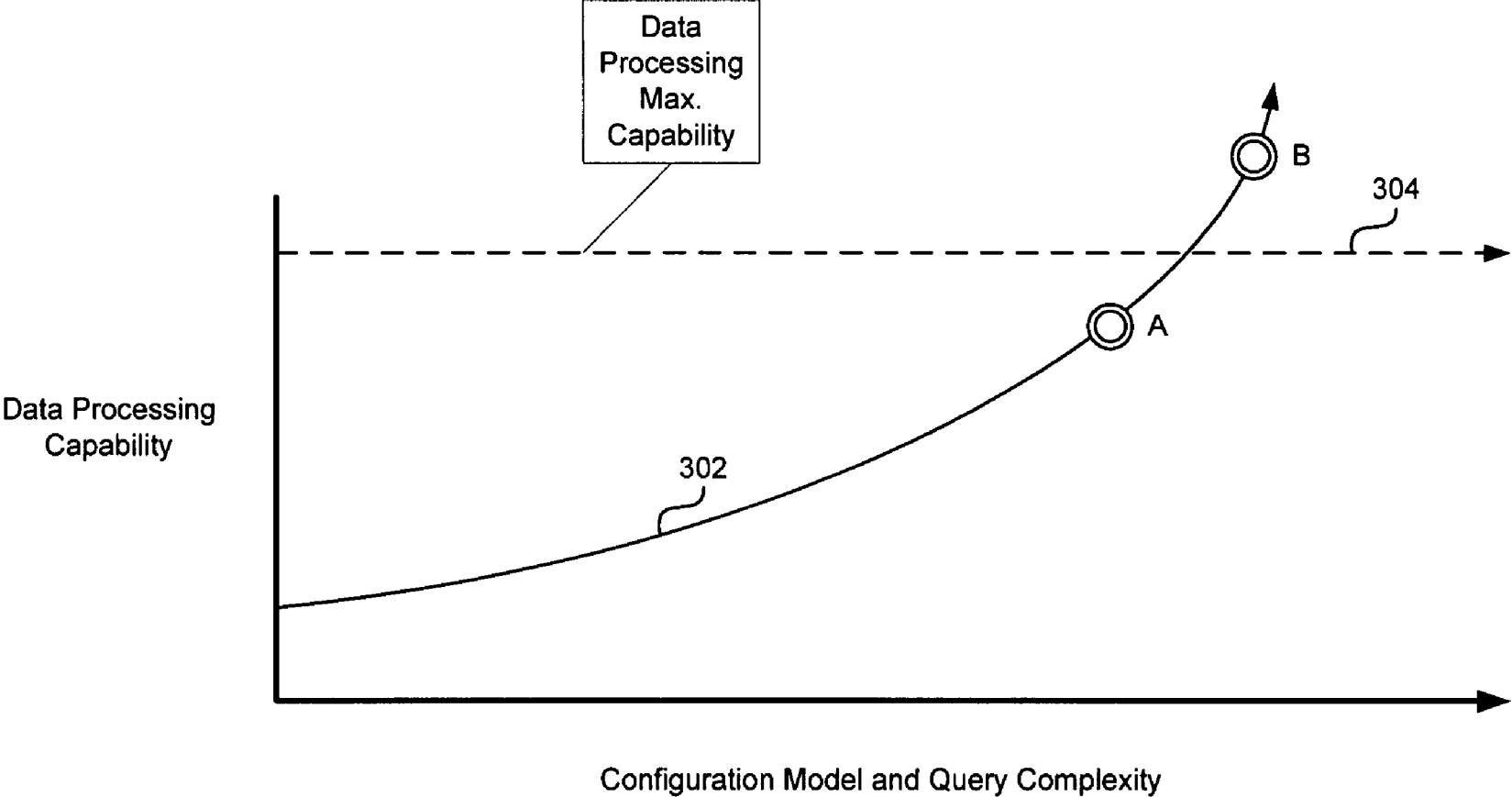


Figure 3 (prior art)

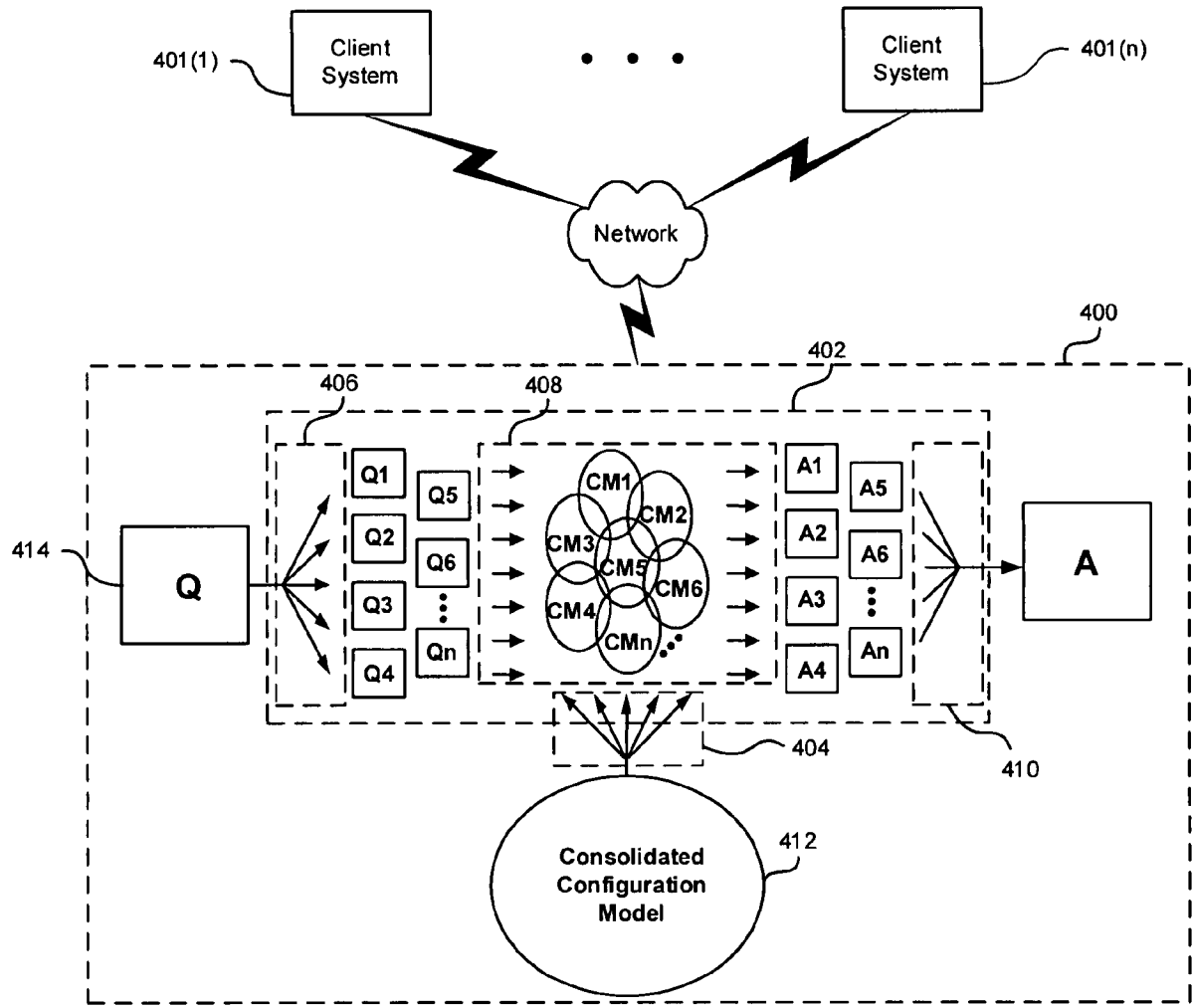


Figure 4

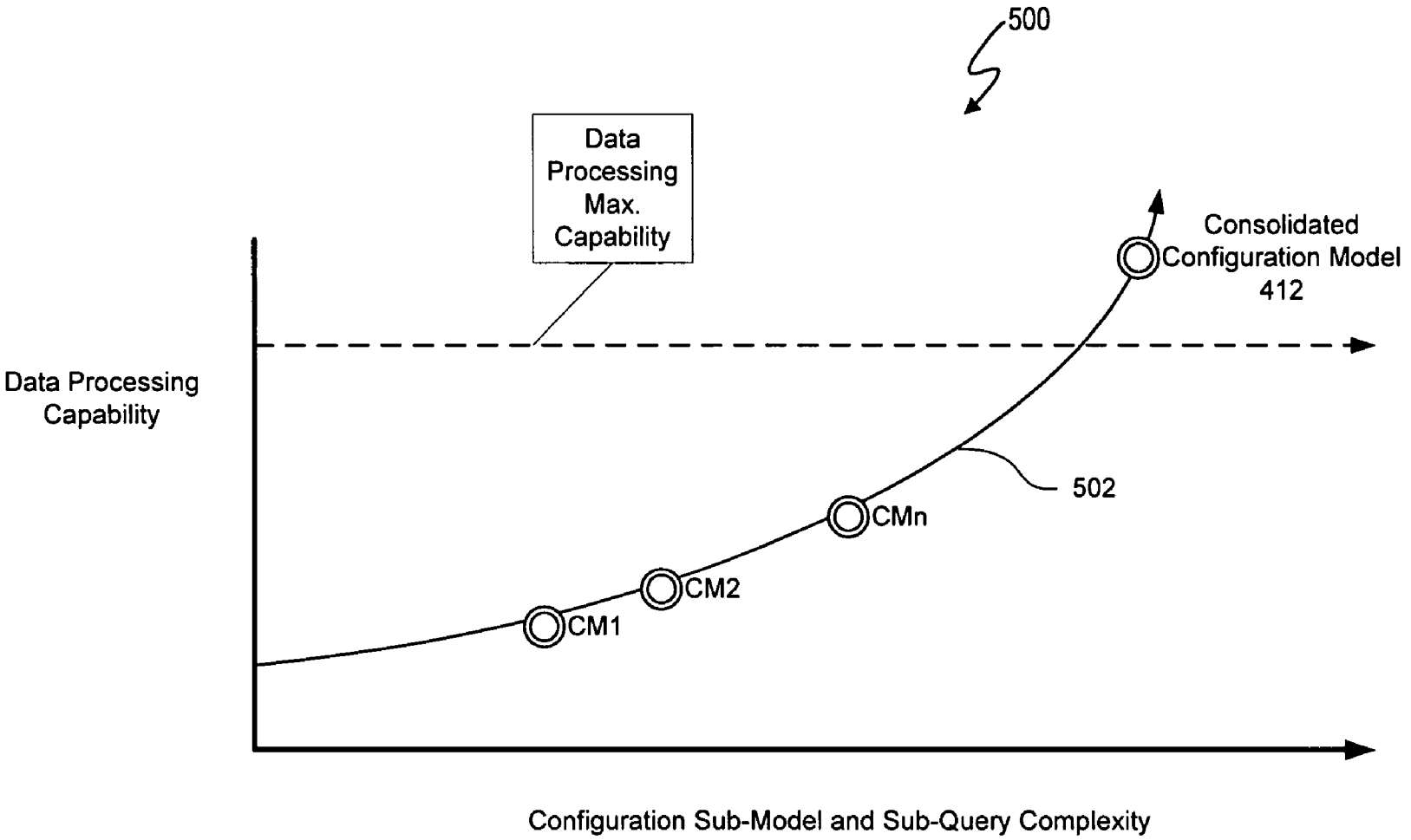


Figure 5

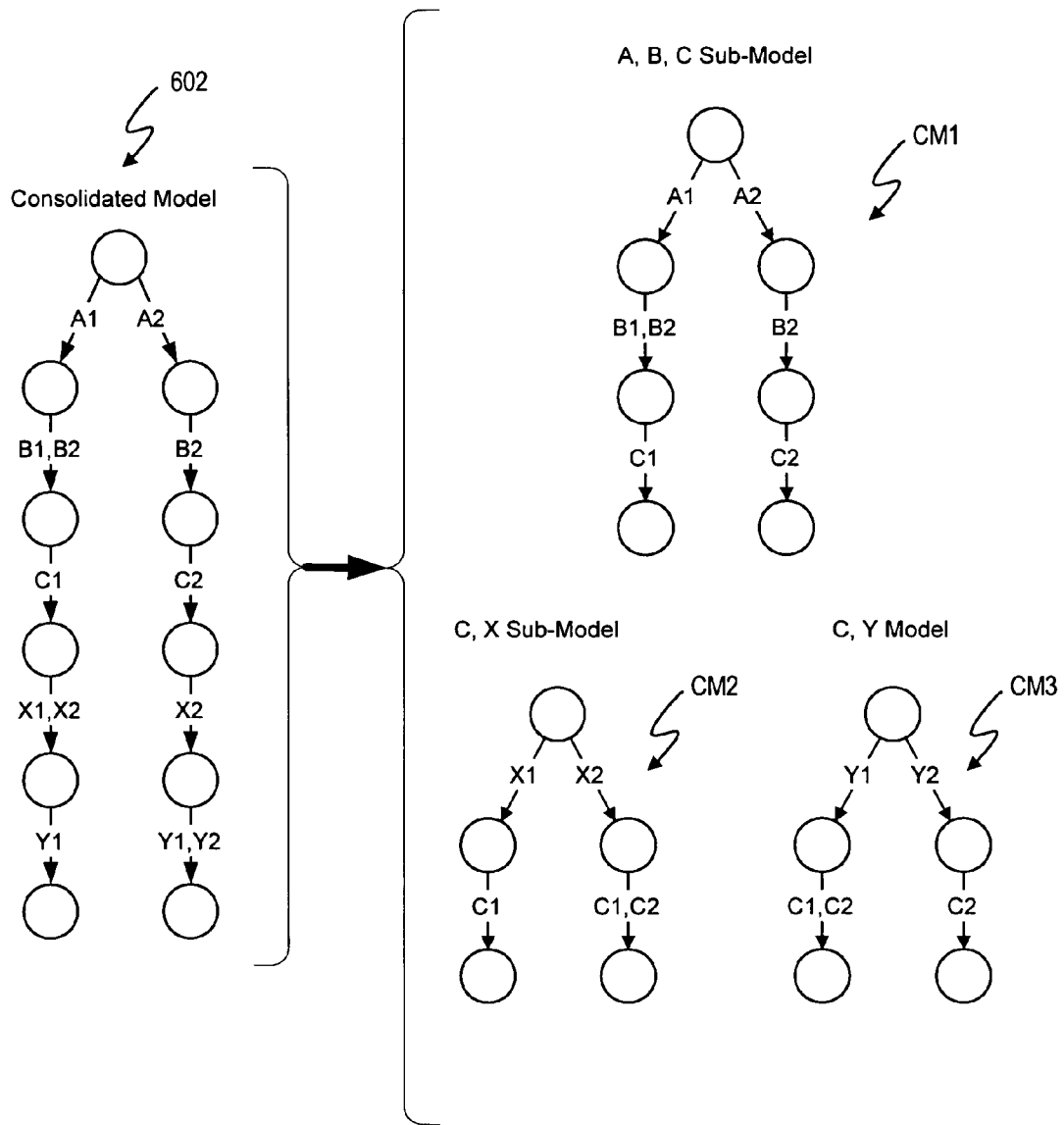


Figure 6

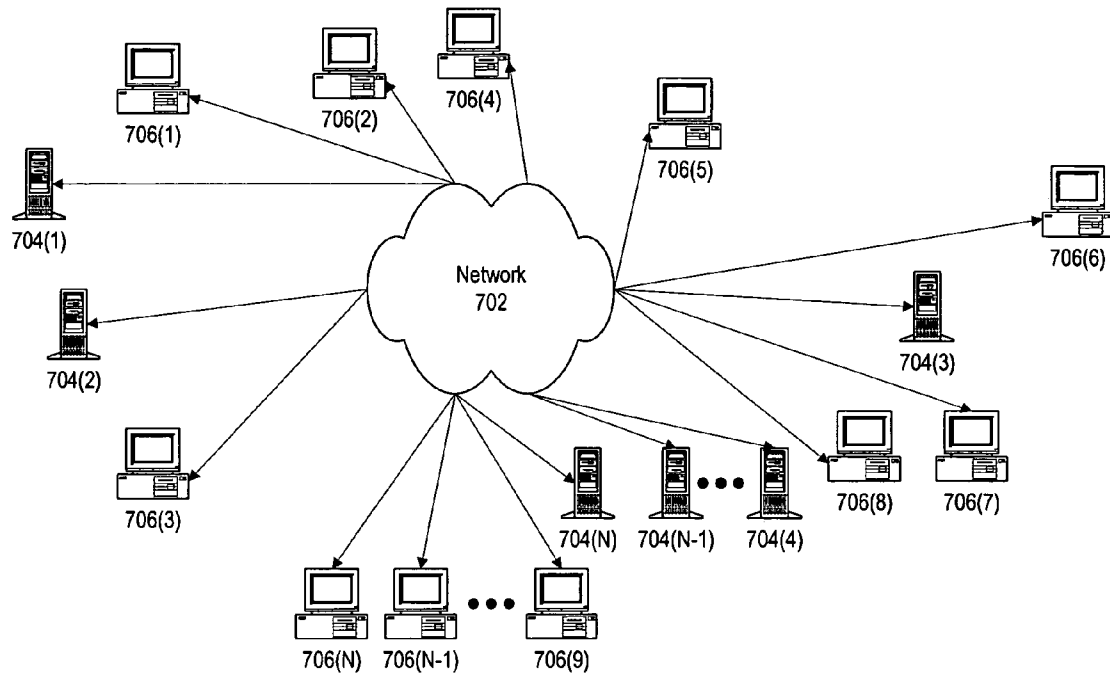


Figure 7

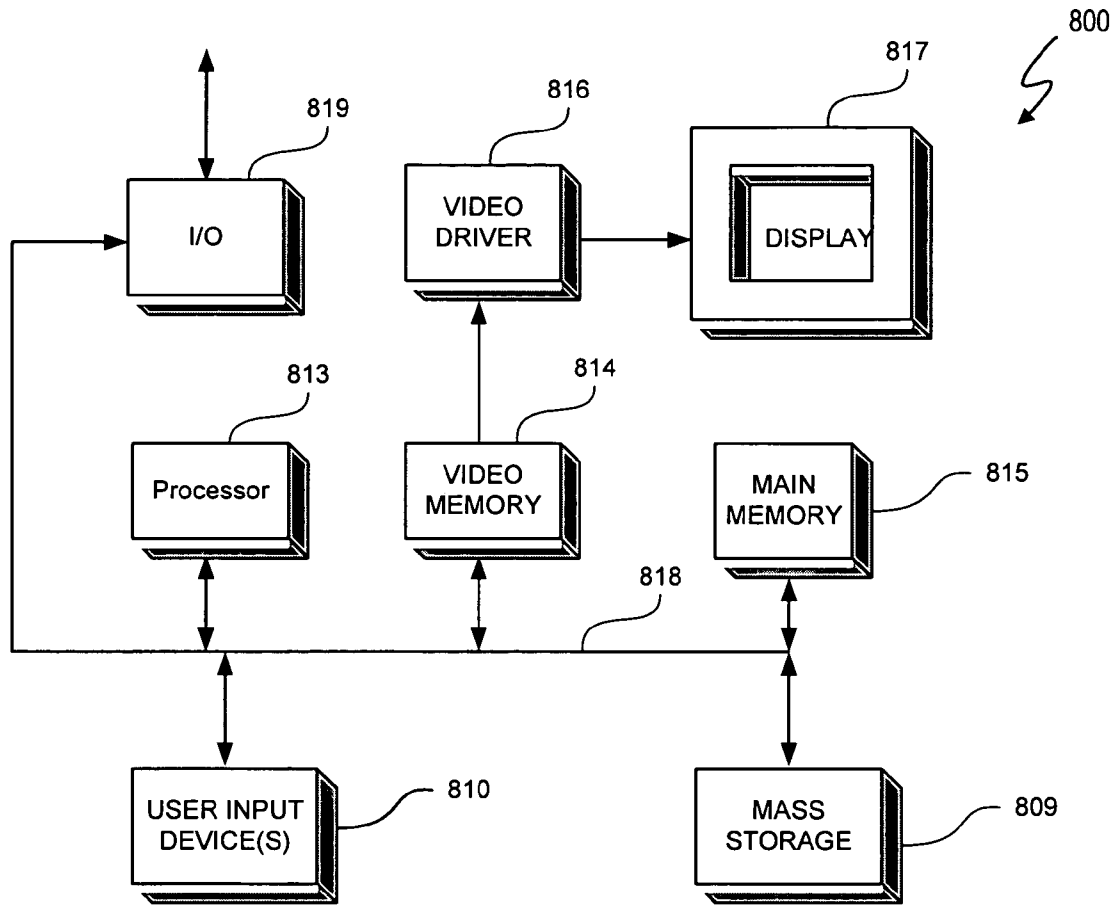


Figure 8

COMPLEX CONFIGURATION PROCESSING USING CONFIGURATION SUB-MODELS

BACKGROUND OF THE INVENTION

1. Field of the Invention

The present invention relates in general to the field of information processing, and more specifically to a system and method for processing complex configuration problems using configuration sub-models.

2. Description of the Related Art

Computer assisted product configuration continues to offer substantial benefits to a wide range of users and industries. FIG. 1 depicts a conventional product configuration process **100** performed by a configuration engine **101**. The configuration process **100** represents one embodiment of an inference procedure. In one embodiment of a conventional inference procedure, configuration query **102** is formulated based on user configuration input, a configuration engine performs the configuration query **102** using a configuration model **104**, and the configuration engine provides an answer **106** to the configuration query **102** based on the configuration query **102** and the contents of the configuration model **104**. The answer **106** represents a particular response to the configuration query **102**.

A configuration model **104** uses, for example, data, rules, and/or constraints (collectively referred to as "data") to define compatibility relationships between parts (also commonly referred to as "features") contained in a specific type of product. A part represents a single component or attribute from a larger, more complex system. Parts may be combined in different ways in accordance with rules and/or constraints to define different instances of the more complex system. For example, "V6 engine" or the exterior color "red" can be parts on a vehicle, and a specific hard disk drive can be a part on a computer. A part group, also called a group, represents a collection of related parts. For example, an "Engines" group might contain the parts "V6 engine" and "4 cylinder engine". A product configuration is a set of parts that define a product. For example, a vehicle configuration containing the parts "V6 engine" and "red" represents a physical vehicle that has a red exterior and a V6 engine. A product can be a physical product such as a vehicle, computer, or any other product that consists of a number of configurable features such as an insurance product. Additionally, a product can also represent a service. A configuration query (also referred to as a "query") is essentially a question that is asked about the parts and relationships in a configuration model. The answer returned from a configuration query will depend on the data in the configuration model, the approach used for answering the question, and the specifics of the question itself. For example, one possible configuration query, translated to an English sentence, is the following: For the given configuration model, are the parts "red" and "V6 engine" compatible with each other.

The configuration model **104** can be used to determine, for example, which parts are compatible with other parts, and provide additional details around specific relationships. For example, a vehicle configuration model can indicate that "red" (a part) is the standard color feature for a specific vehicle, but that the color red is not compatible with "V6 engine" (a part). Configuration model **104** may also contain additional information needed to support specific product related queries. Configuration models can be developed in any number of ways. U.S. Pat. No. 5,825,651 entitled "Method and Apparatus for Maintaining and Configuring Systems", inventors Gupta et al., and assigned to Trilogy Development Group, Inc., describes an example configura-

tion engine and rules based configuration model. U.S. Pat. No. 5,825,651 is incorporated herein by reference in its entirety. U.S. Pat. No. 5,515,524 entitled "Method and Apparatus for Configuring Systems", inventors John Lynch and David Franke, and assigned to Trilogy Development Group, Inc., describes another example configuration engine and constraint based configuration model. U.S. Pat. No. 5,515,524 is also incorporated by reference in its entirety.

FIG. 2 depicts an example configuration model **200** of a product represented in a graphical, tree based form. The product can be configured to include part combinations A1, B1 or B2, C1, X1 or X2, and Y1 or configured to include part combinations A2, B2, C2, X2, and Y1 or Y2. The configuration model **200** includes rules to define these part relationships. Table 1 represents an example rule set, wherein "S" represents "standard" and "O" represents optional. Configuration model **200** represents a relatively non-complex configuration model. Actual configuration models for a single product can include hundreds of thousands or more parts and rules.

TABLE 1

Example Configuration Rules for a Product

A1 S ALL
A2 O ALL
B1 S A1
B2 S A2
B2 O A1
C1 S A1
C2 S A2
X1 S C1
X2 S C2
X2 O C1
Y1 O C1
Y1 S C2
Y2 S C1

Solving configuration problems using computer assisted technology often requires a significant amount of data processing capabilities. Consequently, configuration technologies have attempted to exploit increased data processing capabilities, memory capacities, and network data transfer throughput rates by increasing the capabilities of the configuration engines and/or enhancing the complexity of configuration models and configuration queries. The complexity of a configuration model can be defined in any number of ways, such as by the diversity of parts, part groups, rules, and constraints supported by the configuration model, by the number of parts, rules, and constraints, and by the complexity of part and part group relationships defined by configuration rules and constraints. In any event, the practical complexity achievable for configuration models has been limited by the ability of computer systems to process data within a given period of time, T, and/or limited by other processing constraints, such as a lack of memory. The time period, T, represents an amount of time considered reasonable to perform a configuration task. Time T can vary depending upon the application and expectation of configuration system users.

FIG. 3 depicts a graph **300** representing the practical limitations of configuration model and configuration query complexity in terms of data processing capabilities. Graph **300** compares data processing capabilities of a particular computer system being used to configure a product versus configuration model and query complexity. Conventional inference procedures, such as configuration processes, have an exponential complexity associated with them as depicted by exponential performance curve **302**. Sufficient data process-

ing capability exists to process a configuration model and configuration query having the complexity represented by point A. The dashed line 304 represents the maximum data processing capability of the particular computer system being used. Thus, the computer system could not reasonably process configuration models and configuration queries having a complexity represented by point B.

SUMMARY OF THE INVENTION

In one embodiment, a sub-model inference procedure provides a way to scale queries to larger and more complicated configuration models. In one embodiment of the present invention, a method for using computer assisted configuration technology to solve product configuration problems using configuration sub-models includes processing one or more configuration queries using configuration sub-models, wherein the configuration sub-models collectively model a configurable product and generating an answer to the configuration problem based upon the processed one or more configuration queries and the configuration sub-models.

In another embodiment of the present invention, a computer system to implement an inference procedure for solving product configuration problems using configuration sub-models includes a processor and a storage medium having data encoded therein. The data includes processor executable code for processing one or more configuration queries using configuration sub-models, wherein the configuration sub-models collectively model a configurable product and generating an answer to the configuration problem based upon the processed one or more configuration queries and the configuration sub-models.

In another embodiment of the present invention, a computer storage medium comprising data embedded therein to cause a computer system to solve product configuration problems using configuration. The data includes code for processing one or more configuration queries using configuration sub-models, wherein the configuration sub-models collectively model a configurable product and generating an answer to the configuration problem based upon the processed one or more configuration queries and the configuration sub-models.

In another embodiment of the present invention, a computer system to implement an inference procedure for solving product configuration problems using configuration sub-models. The system includes means for processing one or more configuration queries using configuration sub-models, wherein the configuration sub-models collectively model a configurable product and means for generating an answer to the configuration problem based upon the processed one or more configuration queries and the configuration sub-models.

BRIEF DESCRIPTION OF THE DRAWINGS

The present invention may be better understood, and its numerous objects, features and advantages made apparent to those skilled in the art by referencing the accompanying drawings. The use of the same reference number throughout the several figures designates a like or similar element.

FIG. 1 (prior art) depicts a conventional product configuration process.

FIG. 2 (prior art) depicts a configuration model in graphical, tree based form.

FIG. 3 (prior art) depicts a graph representing data processing capabilities of a computer system versus configuration model and query complexity.

FIG. 4 depicts a configuration model dividing and configuration sub-model inference processing system that performs a configuration model dividing and configuration sub-model inference procedure.

FIG. 5 depicts the data processing capability of a computer system being used to configure a product versus configuration sub-model and sub-query complexity.

FIG. 6 depicts the division of a consolidated configuration model into configuration sub-models.

FIG. 7 depicts a block diagram illustrating a network environment in which the system and process of FIG. 4 may be practiced.

FIG. 8 depicts an example data processing system used in the network of FIG. 7.

DETAILED DESCRIPTION

A configuration model dividing and configuration sub-model inference processing system and procedure addresses the issue of configuration model and query complexity by breaking a configuration problem down into a set of smaller problems, solving them individually and recombining the results into a single result that is equivalent to a conventional inference procedure. In one embodiment, a configuration model is divided into configuration sub-models that can respectively be processed using existing data processing resources. The sub-model inference procedure does not change the exponential nature of configuration model and query complexity but instead generates configuration sub-models on the side of the achievable performance curve. Accordingly, a sub-model inference procedure provides a way to scale queries to larger and more complicated configuration models. Embodiments of the configuration model dividing and configuration sub-model processing system and inference procedure allows processing by a data processing system of configuration models and queries whose collective complexity exceeds the complexity of otherwise unprocessable conventional, consolidated configuration models and queries.

FIG. 4 depicts the configuration model dividing and configuration sub-model inference processing system 400 (referred to herein as “sub-model processing system 400”) that performs configuration model dividing and configuration sub-model inference procedure 402 (referred to herein as “sub-model inference procedure 402”). The sub-model inference procedure 402 includes operations 404, 406, 408, and 410. The sub-model processing system 400 can include software code that is executable by a processor of a computer system, such as a server computer system. In a network environment, the sub-model processing system 400 can be accessed by and communicates with any number client systems 401(1) through 401(n).

Operation 404 receives, as an input, a conventional, consolidated configuration model 412 and divides the consolidated configuration model 412 into a set of configuration sub-models CM1 through CMn, where n is an integer representing the number of configuration sub-models. The configuration sub-models are an input to this process. In one embodiment, the configuration sub-models meet the following criteria:

- a. Each configuration sub-model should represent a portion of the source configuration model 412;
- b. The data collectively contained in the configuration sub-models should be sufficient to provide an answer for each of the sub-queries Q1 through Qn or query being processed; and

5

- c. The configuration sub-models should be divided in such a way that the results of the sub-queries or query can be recombined to provide an answer to the input configuration query **414**.

In another embodiment, a consolidated configuration model **412** is never actually created, and model developers develop only configuration sub-models to collectively model a configurable product.

FIG. **5** depicts the data processing capability of a computer system being used to configure a product versus configuration sub-model and sub-query complexity. In general, the consolidated configuration model **412** is divided sufficiently so that the complexity of each configuration sub-model CM1, CM2, through CMn is low enough to allow processing using available data processing capabilities while still representing the relationships included in the consolidated configuration model **412**, which, in this embodiment, would otherwise not be cable of being processed by the computer system. Thus, the sub-model inference procedure **402** does not change the exponential nature of configuration model and query complexity but instead generates configuration sub-models on the side of the achievable performance curve. Accordingly, the sub-model inference procedure **402** provides a way to scale queries to larger and more complicated configuration models.

In one embodiment, operation **406** divides the conventional, consolidated configuration query **414** into a set of sub-queries Q1 through Qn, which together contain enough information to represent the original query **414**. Each sub-query generated will be used to query against at least one configuration sub-model. A query is divided into enough sub-queries to perform a query on at least enough of the sub-models to produce an answer.

Whether to perform operation **406** and divide query **414** into sub-queries can depend upon the nature of the problem being solved. "Configuration completion" and "configuration validation" problems represent examples of two problems having different natures that result in different sub-query approaches. Configuration completion relates to determining whether a configuration is valid according to the Configuration Model. A configuration is considered complete if there is a part present from every required part group in the configuration model. For example, when performing configuration completion, dividing the query **414** into sub-queries allows the sub-queries to each be processed using at least one configuration sub-model. Configuration validation relates to determining whether a configuration is "valid" or "not valid" according to the configuration model. "Valid" indicates that the parts are all compatible with each other according to the part relationships in the configuration model, and "not valid" indicates that the parts are not compatible with each other. In performing configuration validation, dividing the query **414** into sub-queries is unnecessary to determine validation, because the query **414** can be applied in whole against configuration sub-models. If any answer generated by processing query **414** in accordance with a configuration sub-model results in an invalid (i.e. a non-configurable) answer, then the configuration is invalid. Otherwise, the configuration is valid.

In one embodiment, the following criteria are used by operation **406**:

- A single sub-query can be used to query against multiple sub-models. In other words, each sub-model does not have to have to process one and only one unique sub-query;
- The query **414** can be processed as a sub-query;
- When dividing a query into sub-queries, it is possible that there will be overlapping pieces of information contained in the sub-queries. It is not necessarily desired or a requirement that the sub-queries contain entirely independent questions;

6

- The way the query is divided into sub-queries depends on the structure of the configuration sub-models. Specifically, it depends on the way the sub-models are related, and the relationships between the parts in the overall model. For example, assume the sub-models were originally generated by dividing up the model along family lines with some overlap. The sub-queries will generally (though are not required to) be divided up along similar family lines, with at least as many families present; and

- It will be understood by those of ordinary skill in the art that the way the query is divided into sub-queries also depends on the type of configuration query being performed. A configuration validation query might need a different Query Division approach than a Configuration Completion query.

Operation **408** processes the individual sub-queries Q1 through Qn against the configuration sub-models, producing a set of sub-answers. Enough sub-queries should be processed such that the sub-answers contain enough information to recombine them into a single answer to the input configuration query.

Operation **410** combines the sub-answers A1 through An together to create a single answer A. The answer A represents a correct answer for the input configuration query. However, for some queries, there are multiple correct answers. Thus, the answer determined by operation **410** is correct but may or may not be identical to an answer provided had the configuration query been performed using the conventional process depicted in FIG. **1**. For example, in the case where the conventional process would return an "optimal" answer, the sub-model inference procedure **402** may return a sub-optimal, albeit correct, answer. Also, in the case that there is more than one "optimal" answer, the sub-model inference procedure **402** may return a different optimal answer than the conventional process.

In one embodiment, operations **404**, **406**, **408**, and **410** are performed in order. However, operations **404**, **406**, **408**, and **410** can be overlapping. For example, it is not required that any given operation finish completely before the next operation begins. For example, as each sub-query is processed in operation **408**, the resulting sub-answer can be determined to generate a growing, cumulative answer A before the next sub-query is processed.

The following pseudo code represents the sub-model inference procedure **402**:

```

result inference-procedure(model, query)
{
  sub-models=divide-model(model) (Operation 404, implementation dependent on the specific problem) OR initially develop configuration sub-models
  sub-queries=divide-query(query) (Operation 406, implementation dependent on the specific problem)
  //This loop encompasses Operation 408//
  answers={ }
  for(model in sub-models) {
    sub-query=find-sub-query(sub-queries, model)
    //Get the right sub-query to be asking this sub-model//
    answers[model]=model.inference-procedure(sub-query)
    //Run the inference procedure for this sub-query on the sub-model//
  }
  //Recombine the answers to each of the sub-queries into a single unified answer (Operation 410)//
  result=combine(answers)
  return result
}

```

7

The following examples illustrate embodiments of sub-model processing system 400 and sub-model inference procedure 402.

Example

Configuration Validation

The following example details sub-model inference procedure 402 in a context wherein an incoming configuration is complete (a part is present from every required part group). A query is generated using conventional processes to query against the configuration sub-models to determine if the configuration is valid.

The following pseudo code represents the embodiment of sub-model inference procedure 402 used for configuration validation:

```
//for the complete feature string validation problem
divide-model=procedure which breaks a consolidated
model up into sub-models along family lines OR initially
develop configuration sub-models.
divide-query=returns the original query unchanged
combine=loop which takes each boolean answer and uses
the logical AND operator to combine them
into a single boolean answer//
boolean is Buildable(sub-models, query)
{
sub-queries=divide(query) (Operation 406);
//Break the query into sub-queries. For a configuration
validation query type, it is unnecessary to divide the
query 414 into multiple sub-queries. Thus, in this
embodiment of operation 406 query 414=sub-query Q1
and n=1. In other words, operation 406 can just return
the entire original query 414//
answers=[ ] (operation 408)
for(model in sub-models){
sub-query=find(sub-queries, model);
//Get the right sub-query to be asking this sub-model//
answers[model]=model.is Buildable(sub-query);
//Query against each sub-model//
}
result=True
for(answer in answers)//Operation 410//{
result=result && answer;//“&&” is a logical AND
operator//
//Recombine answers to sub-queries (this particular query
type can just use a boolean and operator)//
}
return result;
}
```

Table 2 represents a conventional configuration model and query for a configuration validation problem:

TABLE 2	
Conventional Model:	
A1 S ALL	
A2 O ALL	
B1 S A1	
B2 S A2	
B2 O A1	
X1 S ALL	
X2 O ALL	
Conventional Query:	
Are A1, B1 and X1 buildable together?	Yes
Are A2, B1 and X1 buildable together?	No

8

The sub-model inference procedure 402 uses the conventional model as an input. In one embodiment, operation 404 divides the conventional model into the following configuration sub-models represented in Table 3, Table 4, and Table 5:

TABLE 3

Family A model:	
A1 S ALL	
A2 O ALL	

TABLE 4

Family B model:	
B1 S A1	
B2 O A1	
B2 S A2	

TABLE 5

Family X model:	
X1 S ALL	
X2 O ALL	

Table 6 and Table 7 represent one embodiment of sub-queries generated by operation 406 and sub-answers generated by operation 408:

TABLE 6

Sub-Queries Generated by Operation 406:	
1. Is A1 buildable?	Yes
2. Are A1 and B1 buildable together?	Yes
3. Is X1 buildable?	Yes

TABLE 7

Sub-Queries Generated by Operation 406:	
1. Is A1 buildable?	Yes
2. Are A2 and B1, buildable together?	No
3. Is X1 buildable?	Yes

In operation 410, for this problem type, i.e. configuration validation problem, the sub-answers of the sub-queries can be AND-ed together and recombined into a single answer that is equivalent to the answer provided by querying the conventional configuration model.

Example

Configuration Completion

The configuration completion example below details an exemplary usage of the sub-model inference procedure 402 for a configuration completion query, in the specific case that the incoming configuration is incomplete (a part is not present from every required part group). The goal of a configuration completion query is to complete the partial configuration with parts from the missing part groups in such a way that the resulting configuration is valid according to the traditional configuration model and contains a single part from each part group.

To solve the incomplete feature string completion problem using configuration sub-models, the following process can be used:

- divide-model=procedure which breaks a consolidated model up into sub-models in such a way that they are smaller than the original consolidated model and is sufficient to provide an answer for each sub-query being processed against it as previously described OR initially develop configuration sub-models;
- divide-query=procedure which breaks the query up into n pieces where n is the number of sub-models (CM1, CM2, CMn);
- Sub-query Qi has all of the parts from the original query that are from the part groups present in CMi; and
- combine=set intersection operator which takes the set of buildables returned from executing each sub-query Qi on the sub-model CMi and intersects them together to find common components. The returned set of buildables is complete and contains all parts that were on the original consolidated input query.

FIG. 6 depicts the division of consolidated configuration model 602 into configuration sub-models CM1, CM2, and CM3 in accordance with operation 404.

In one embodiment, the consolidated model 602 includes the rules contained in Table 8:

TABLE 8

Consolidated Model 602 Rules:

- A1 S ALL
- A2 O ALL
- B1 S A1
- B2 S A2
- B2 O A1
- C1 S A1
- C2 S A2
- X1 S C1
- X2 S C2
- X2 O C1
- Y1 O C1
- Y1 S C2
- Y2 S C2

A conventional configuration completion process follows:

1. Complete the partial configuration X1, A1.

This results in an inference procedure being run on the conventional configuration model 602 which searches for at least one buildable product configuration found that contains both X1 and A1. There are two configurations present in the model that satisfy these constraints:

- A1, B1, C1, X1, Y1
- A1, B2, C1, X1, Y1

2. Either one of these product configurations may be returned because both satisfy the original query.

The sub-model inference procedure 402 solves the same configuration completion problem by performing operation 404 to divide configuration model 602 into sub-models CM1, CM2, and CM3.

Operation 406 generates the following sub-queries, and operation 408 processes the sub-queries in accordance with the designated configuration sub-model to generate sub-answers:

Sub-Queries:

1. What buildables are present involving A1 in the A, B, C model? (Note: X1 is ignored in this sub-query because the X part group is not present in the A, B, C sub-configuration model.) (Also, a “buildable” refers to a set

of part or part group configurations that adhere to relationships contained in a configuration sub-model).

- A1, B1, C1
- A1, B2, C1

2. What buildables are present involving X1 in the C, X model?

- C1, X1

3. What buildables are present in the C, Y model? (Note: The original input query doesn’t involve any of the part groups contained in the C, Y model, so the query results in asking for all buildables present in this sub-configuration model.)

- Y1, C1
- Y1, C2
- Y2, C2

Operation 410 combines the sub-answers to form a collective answer A. For this particular type of query, i.e. a configuration completion query, the combination operation 410 involves intersecting the resulting buildable spaces together into one space. Performing operation 410 results in the following buildables.

- A1, B1, C1, X1, Y1
- A1, B2, C1, X1, Y1,

which are the same buildables generated by the traditional completion query.

The following sets forth an example, non-exhaustive list configuration problems that can be solved using sub-model processing system 400 and sub-model inference procedure 402:

Configuration Validation—This query indicates whether a configuration is “valid” or “not valid” according to the configuration model. “Valid” indicates that the parts are all compatible with each other according to the part relationships in the configuration model, and “not valid” indicates that the parts are not compatible with each other.

Configuration Completion—This query adds parts to a configuration until it becomes a complete, fully specified configuration, according to some heuristic. Configuration Completion attempts to guarantee that the resulting configuration is valid according to the Configuration Model. A configuration is considered complete if there is a part present from every required part group in the configuration model.

Configuration Correction—This query corrects an invalid configuration in an automated fashion. If the set of parts in the configuration are incompatible, Configuration Correction will remove and add enough parts to make the configuration valid according to some heuristic. Configuration Correction guarantees that the resulting configuration is valid according to the configuration model.

Configuration Explanation—This query returns human-readable explanations as to why an invalid configuration is invalid. Configuration Explanation gives enough information to provide the user assistance in manually correcting a feature string when multiple valid corrections apply.

Attribute Tracing—This query returns context-specific information about each part in a configuration. For example, if part descriptions depend on the market in which the vehicle is ordered, attribute tracing can return the descriptions of all of the parts in the configuration given the presence of a market part on the configuration.

There are a number of different ways that configuration models can be represented. As a result, the specific technol-

ogy that performs a configuration query can vary depending on the model used. The sub-model processing system **400** and sub-model inference procedure **402** are not specific to a single configuration model representation or configuration processing approach. More specifically, the particular data structure(s) used to represent queries, sub-queries, configuration models, configuration sub-models, sub-answers, and answers is a matter of design choice and depends upon, for example, configuration engine specifications, familiarity, etc. The particular data manipulation techniques used to perform operations **404**, **406**, **408**, and **410** are also a matter of design choice and generally relate to the type of data structure used. In one embodiment, tries are used to represent the data and trie operations are used to manipulate the data. Example tries and trie operations are set forth in U.S. patent application Ser. No. 10/404,891, entitled "Configuration Model Consistency Checking Using Flexible Rule Space Subsets", inventor Shawn A. P. Smith, filing date Mar. 31, 2003, and assigned to Trilogy Development Group, Inc. U.S. patent application Ser. No. 10/404,891 is hereby incorporated by reference in its entirety.

FIG. 7 is a block diagram illustrating a network environment in which a sub-model processing system **400** and sub-model inference procedure **402** may be practiced. Network **702** (e.g. a private wide area network (WAN) or the Internet) includes a number of networked server computer systems **704(1)-(N)** that are accessible by client computer systems **706(1)-(N)**, where N is the number of server computer systems connected to the network. Communication between client computer systems **706(1)-(N)** and server computer systems **704(1)-(N)** typically occurs over a network, such as a public switched telephone network over asynchronous digital subscriber line (ADSL) telephone lines or high-bandwidth trunks, for example communications channels providing T1 or OC3 service. Client computer systems **706(1)-(N)** typically access server computer systems **704(1)-(N)** through a service provider, such as an internet service provider ("ISP") by executing application specific software, commonly referred to as a browser, on one of client computer systems **706(1)-(N)**.

Client computer systems **706(1)-(N)** and/or server computer systems **704(1)-(N)** may be, for example, computer systems of any appropriate design, including a mainframe, a mini-computer, a personal computer system including notebook computers, a wireless, mobile computing device (including personal digital assistants). These computer systems are typically information handling systems, which are designed to provide computing power to one or more users, either locally or remotely. Such a computer system may also include one or a plurality of input/output ("I/O") devices coupled to the system processor to perform specialized functions. Mass storage devices such as hard disks, compact disk ("CD") drives, digital versatile disk ("DVD") drives, and magneto-optical drives may also be provided, either as an integrated or peripheral device. One such example computer system is shown in detail in FIG. 8.

Embodiments of the sub-model processing system **400** and sub-model inference procedure **402** can be implemented on a computer system such as a general-purpose computer **800** illustrated in FIG. 8. Input user device(s) **810**, such as a keyboard and/or mouse, are coupled to a bi-directional system bus **818**. The input user device(s) **810** are for introducing user input to the computer system and communicating that user input to processor **813**. The computer system of FIG. 8 generally also includes a video memory **814**, main memory **815** and mass storage **809**, all coupled to bi-directional system bus **818** along with input user device(s) **810** and proces-

sor **813**. The mass storage **809** may include both fixed and removable media, such as other available mass storage technology. Bus **818** may contain, for example, 32 address lines for addressing video memory **814** or main memory **815**. The system bus **818** also includes, for example, an n-bit data bus for transferring DATA between and among the components, such as CPU **809**, main memory **815**, video memory **814** and mass storage **809**, where "n" is, for example, 32 or 64. Alternatively, multiplex data/address lines may be used instead of separate data and address lines.

I/O device(s) **819** may provide connections to peripheral devices, such as a printer, and may also provide a direct connection to remote server computer systems via a telephone link or to the Internet via an ISP. I/O device(s) **819** may also include a network interface device to provide a direct connection to remote server computer systems via a direct network link to the Internet via a POP (point of presence). Such connection may be made using, for example, wireless techniques, including digital cellular telephone connection, Cellular Digital Packet Data (CDPD) connection, digital satellite data connection or the like. Examples of I/O devices include modems, sound and video devices, and specialized communication devices such as the aforementioned network interface.

Computer programs and data are generally stored as instructions and data in mass storage **809** until loaded into main memory **815** for execution. Computer programs may also be in the form of electronic signals modulated in accordance with the computer program and data communication technology when transferred via a network.

The processor **813**, in one embodiment, is a microprocessor manufactured by Motorola Inc. of Illinois, Intel Corporation of California, or Advanced Micro Devices of California. However, any other suitable single or multiple microprocessors or microcomputers may be utilized. Main memory **815** is comprised of dynamic random access memory (DRAM). Video memory **814** is a dual-ported video random access memory. One port of the video memory **814** is coupled to video amplifier **816**. The video amplifier **816** is used to drive the display **817**. Video amplifier **816** is well known in the art and may be implemented by any suitable means. This circuitry converts pixel DATA stored in video memory **814** to a raster signal suitable for use by display **817**. Display **817** is a type of monitor suitable for displaying graphic images.

The computer system described above is for purposes of example only. The sub-model processing system **400** and sub-model inference procedure **402** may be implemented in any type of computer system or programming or processing environment. It is contemplated that the sub-model processing system **400** and sub-model inference procedure **402** might be run on a stand-alone computer system, such as the one described above. The sub-model processing system **400** and sub-model inference procedure **402** might also be run from a server computer systems system that can be accessed by a plurality of client computer systems interconnected over an intranet network. Finally, the sub-model processing system **400** and sub-model inference procedure **402** may be run from a server computer system that is accessible to clients over the Internet.

Many embodiments of the present invention have application to a wide range of industries and products including the following: computer hardware and software manufacturing and sales, professional services, financial services, automotive sales and manufacturing, telecommunications sales and manufacturing, medical and pharmaceutical sales and manufacturing, and construction industries.

13

Although the present invention has been described in detail, it should be understood that various changes, substitutions and alterations can be made hereto without departing from the spirit and scope of the invention as defined by the appended claims.

What is claimed is:

1. A method for using a computer system, wherein the computer system includes computer assisted configuration technology to respond to one or more configuration queries using configuration sub-models, the method comprising:

receiving one or more configuration queries representing one or more questions involving parts and part relationships in a configuration of a configurable product; and performing with the computer system:

dividing one or more configuration queries into multiple configuration sub-queries, wherein the multiple configuration sub-queries represent the one or more configuration queries;

processing each sub-query using at least one configuration sub-model per sub-query, wherein each configuration sub-model collectively models the configurable product and each configuration sub-model includes data to define compatibility relationships between parts included in the configuration sub-model and each configuration sub-model (i) represents a portion of a configuration model of the configurable product and (ii) allows answers from each configuration sub-model to be combined to provide a consolidated answer to the one or more configuration queries;

generating a response to the one or more configuration queries based upon the processing of each sub-query using at least one configuration sub-model per sub-query; and

providing the response to the one or more configuration queries as data for display by a display device.

2. The method of claim 1 wherein the one or more configuration queries relate to a configuration completion problem.

3. The method of claim 1 further comprising:

processing each sub-query using multiple configuration sub-models per sub-query.

4. The method of claim 1 wherein the one or more configuration queries relate to a configuration validation problem and processing one or more configuration queries further comprises:

processing at least one of the sub-queries using different configuration sub-models until a configuration validation answer can be determined.

5. The method of claim 1 wherein the data collectively included in the configuration sub-models provides a response for each of the sub-queries being processed.

6. The method of claim 1 wherein at least two sub-queries include overlapping information.

7. The method of claim 1 further comprising:

dividing a consolidated configuration model into the multiple configuration sub-models in accordance with a predetermined data structure;

wherein at least one of the configuration queries into multiple configuration sub-queries further comprises dividing the sub-queries in accordance with the sub-model structure.

8. The method of claim 7 wherein the predetermined data structure comprises a data structure divided along configuration model part groups, wherein the part groups are a collection of related parts.

9. The method of claim 1 wherein generating a response to the one or more configuration queries based upon the pro-

14

cessed one or more configuration queries and the configuration sub-models further comprises:

generating a response for each processed configuration sub-model; and

combining each response for each processed configuration sub-model to generate the answer.

10. The method of claim 1 further comprising:

dividing a consolidated configuration model into the configuration sub-models.

11. The method of claim 10 wherein dividing the consolidated configuration model into multiple configuration sub-models further comprises:

dividing the configuration model so that complexity of each configuration sub-model allows processing using available data processing capabilities of the computer assisted configuration technology while still representing the relationships included in the consolidated configuration model.

12. The method of claim 10 wherein each configuration sub-model represents a portion of the consolidated configuration model.

13. The method of claim 1 wherein the configurable product is a vehicle.

14. The method of claim 1 further comprising:

displaying the response on display device.

15. The method of claim 1 wherein the configuration sub-models each comprise data and rules to define compatibility relationships between parts included in a product.

16. The method of claim 1 wherein the configuration problem comprises a configuration problem involving parts of a product.

17. A method for using a computer system, wherein the computer system includes computer assisted configuration technology to respond to one or more configuration queries using configuration sub-models, the method comprising:

dividing a consolidated configuration model into multiple configuration sub-models; and

performing with the computer system:

responding to the one or more configuration queries representing questions involving configuration of a configurable product, wherein responding to the one or more configuration queries comprises:

dividing one or more configuration queries into multiple configuration sub-queries, wherein the multiple configuration sub-queries represent the one or more configuration queries;

processing each sub-query using at least one configuration sub-model per sub-query, wherein each configuration sub-model collectively models the configurable product and each configuration sub-model includes data to define compatibility relationships between parts included in the configuration sub-model and each configuration sub-model (i) represents a portion of a configuration model of the configurable product and (ii) allows answers from each configuration sub-model to be combined to provide a consolidated answer to the one or more configuration queries;

generating a response to the one or more configuration queries based upon the processing of each sub-query using at least one configuration sub-model per sub-query; and

providing the response to the one or more configuration queries as data for display by a display device.

15

18. A computer system to implement an inference procedure for responding to one or more configuration queries using configuration sub-models, the system comprising:

a processor; and

a storage medium having data encoded therein, the data comprising processor executable code for:

receiving one or more configuration queries representing a questions involving parts and part relationships in a configuration of a configurable product;

dividing one or more configuration queries into multiple configuration sub-queries, wherein the multiple configuration sub-queries represent the one or more configuration queries;

processing each sub-query using at least one configuration sub-model per sub-query, wherein each configuration sub-model collectively models the configurable product and each configuration sub-model includes data to define compatibility relationships between parts included in the configuration sub-model and each configuration sub-model (i) represents a portion of a configuration model of the configurable product and (ii) allows answers from each configuration sub-model to be combined to provide a consolidated answer to the one or more configuration queries;

generating a response to the one or more configuration queries based upon the processing of each sub-query using at least one configuration sub-model per sub-query; and

providing the response to the one or more configuration queries as data for display by a display device.

19. The computer system of claim 18 wherein the one or more configurations queries relate to a configuration completion problem.

20. The computer system of claim 18 wherein the one or more configuration queries relate to a configuration validation problem and when solving the configuration validation problem, and the code for processing one or more configuration queries further comprises:

processing at least one of the sub-queries using different configuration sub-models until a configuration validation answer can be determined.

21. The computer system of claim 18 wherein the data collectively included in the configuration sub-models provides a response for each of the sub-queries being processed.

22. The computer system of claim 18 wherein at least two sub-queries include overlapping information.

23. The computer system of claim 18 wherein the code further comprises code for:

dividing the configuration sub-models in accordance with a predetermined data structure; and

dividing the sub-queries in accordance with the sub-model structure.

24. The computer system of claim 23 wherein the predetermined data structure comprises a data structure divided along configuration model part groups, wherein the part groups are a collection of related parts.

25. The computer system of claim 18 wherein the code for generating a response to the one or more configuration queries based upon the processed one or more configuration queries and the configuration sub-models further comprises code for:

generating a response for each processed configuration sub-model; and

combining each response for each processed configuration sub-model to generate the answer.

16

26. The computer system of claim 18 wherein the code for dividing the consolidated configuration model into multiple configuration sub-models further comprises code for:

dividing the configuration model so that complexity of each configuration sub-model allows processing using available data processing capabilities of the computer system while still representing the relationships included in the consolidated configuration model.

27. The computer system of claim 18 wherein the data further comprises processor executable code for:

dividing a consolidated configuration model into the configuration sub-models.

28. The computer system of claim 27 wherein the code for dividing the consolidated configuration model into multiple configuration sub-models further comprises code for:

dividing the configuration model so that complexity of each configuration sub-model allows processing using available data processing capabilities of the computer system while still representing the relationships included in the consolidated configuration model.

29. The computer system of claim 27 wherein each configuration sub-model represents a portion of the consolidated configuration model.

30. A computer system to implement an inference procedure for responding to one or more configuration queries using configuration sub-models, the system comprising:

a processor; and

a storage medium having data encoded therein, the data comprising processor executable code for:

dividing a consolidated configuration model into multiple configuration sub-models;

responding to the one or more configuration queries representing questions involving configuration of a configurable product, wherein responding to the one or more configuration queries comprises:

dividing one or more configuration queries into multiple configuration sub-queries, wherein the multiple configuration sub-queries represent the one or more configuration queries;

processing each sub-query using at least one configuration sub-model per sub-query, wherein each configuration sub-model collectively models the configurable product and each configuration sub-model includes data to define compatibility relationships between parts included in the configuration sub-model and each configuration sub-model (i) represents a portion of a configuration model of the configurable product and (ii) allows answers from each configuration sub-model to be combined to provide a consolidated answer to the one or more configuration queries;

generating a response to the one or more configuration queries based upon the processing of each sub-query using at least one configuration sub-model per sub-query; and

providing the response to the one or more configuration queries as data for display by a display device.

31. A computer storage medium comprising data embedded therein to cause a computer system to respond to one or more configuration queries using configuration sub-models, wherein the data comprises processor executable code for:

receiving one or more configuration queries representing a questions involving parts and part relationships in a configuration of a configurable product;

17

dividing one or more configuration queries into multiple configuration sub-queries, wherein the multiple configuration sub-queries represent the one or more configuration queries;

processing each sub-query using at least one configuration sub-model per sub-query, wherein each configuration sub-model collectively models the configurable product and each configuration sub-model includes data to define compatibility relationships between parts included in the configuration sub-model and each configuration sub-model (i) represents a portion of a configuration model of the configurable product and (ii) allows answers from each configuration sub-model to be combined to provide a consolidated answer to the one or more configuration queries;

generating a response to the one or more configuration queries based upon the processing of each sub-query using at least one configuration sub-model per sub-query; and

providing the response to the one or more configuration queries as data for display by a display device.

32. The computer storage medium of claim **31** wherein the one or more configuration queries relate to a configuration completion problem.

33. The computer storage medium of claim **31** wherein the data further comprises processor executable code for:

processing each sub-query using multiple configuration sub-models per sub-query.

34. The computer storage medium of claim **31** wherein the one or more configuration queries relate to a configuration validation problem and the code for processing one or more configuration queries further comprises:

processing at least one of the sub-queries using different configuration sub-models until a configuration validation answer can be determined.

35. The computer storage medium of claim **31** wherein the data collectively included in the configuration sub-models provides a response for each of the sub-queries being processed.

36. The computer storage medium of claim **31** wherein at least two sub-queries include overlapping information.

37. The computer storage medium of claim **31** the code further comprises code for:

dividing the configuration sub-models in accordance with a predetermined data structure; and

dividing the sub-queries in accordance with the sub-model structure.

38. The computer storage medium of claim **37** wherein the predetermined data structure comprises a data structure divided along configuration model part groups, wherein the part groups are a collection of related parts.

39. The computer storage medium of claim **31** wherein the code for generating a response to the one or more configuration queries based upon the processed one or more configuration queries and the configuration sub-models further comprises code for:

generating a response for each processed configuration sub-model; and

combining each response for each processed configuration sub-model to generate the answer.

40. The computer storage medium of claim **31** wherein the code for dividing the consolidated configuration model into multiple configuration sub-models further comprises code for:

dividing the configuration model so that complexity of each configuration sub-model allows processing using available data processing capabilities of the computer

18

system while still representing the relationships included in the consolidated configuration model.

41. The computer storage medium of claim **31** wherein the data further comprises processor executable code for:

dividing a consolidated configuration model into the configuration sub-models.

42. The computer storage medium of claim **41** wherein the code for dividing the consolidated configuration model into multiple configuration sub-models further comprises code for:

dividing the configuration model so that complexity of each configuration sub-model allows processing using available data processing capabilities of the computer system while still representing the relationships included in the consolidated configuration model.

43. The computer storage medium of claim **41** wherein each configuration sub-model represents a portion of the consolidated configuration model.

44. A computer storage medium comprising data embedded therein to cause a computer system to respond to one or more configuration queries using configuration sub-models, wherein the data comprises code for:

dividing a consolidated configuration model into multiple configuration sub-models;

responding to the one or more configuration queries representing questions involving configuration of a configurable product, wherein responding to the one or more configuration queries comprises:

dividing one or more configuration queries into multiple configuration sub-queries, wherein the multiple configuration sub-queries represent the one or more configuration queries;

processing each sub-query using at least one configuration sub-model per sub-query, wherein each configuration sub-model collectively models the configurable product and each configuration sub-model includes data to define compatibility relationships between parts included in the configuration sub-model;

generating a response to the one or more configuration queries based upon the processing of each sub-query using at least one configuration sub-model per sub-query and each configuration sub-model (i) represents a portion of a configuration model of the configurable product and (ii) allows answers from each configuration sub-model to be combined to provide a consolidated answer to the one or more configuration queries; and

providing the response to the one or more configuration queries as data for display by a display device.

45. A computer system to implement an inference procedure for responding to one or more configuration queries using configuration sub-models, the system comprising:

means for receiving one or more configuration queries representing a questions involving parts and part relationships in a configuration of a configurable product;

means for dividing one or more configuration queries into multiple configuration sub-queries, wherein the multiple configuration sub-queries represent the one or more configuration queries;

means for processing each sub-query using at least one configuration sub-model per sub-query, wherein each configuration sub-model collectively models the configurable product and each configuration sub-model includes data to define compatibility relationships between parts included in the configuration sub-model and each configuration sub-model (i) represents a por-

19

tion of a configuration model of the configurable product
and (ii) allows answers from each configuration sub-
model to be combined to provide a consolidated answer
to the one or more configuration queries;
means for generating a response to the one or more con- 5
figuration queries based upon the processing of each
sub-query using at least one configuration sub-model
per sub-query; and

20

means for providing the response to the one or more con-
figuration queries as data for display by a display device.

46. The computer system of claim **45** further comprising:
means for dividing a consolidated configuration model into
the configuration sub-models.

* * * * *